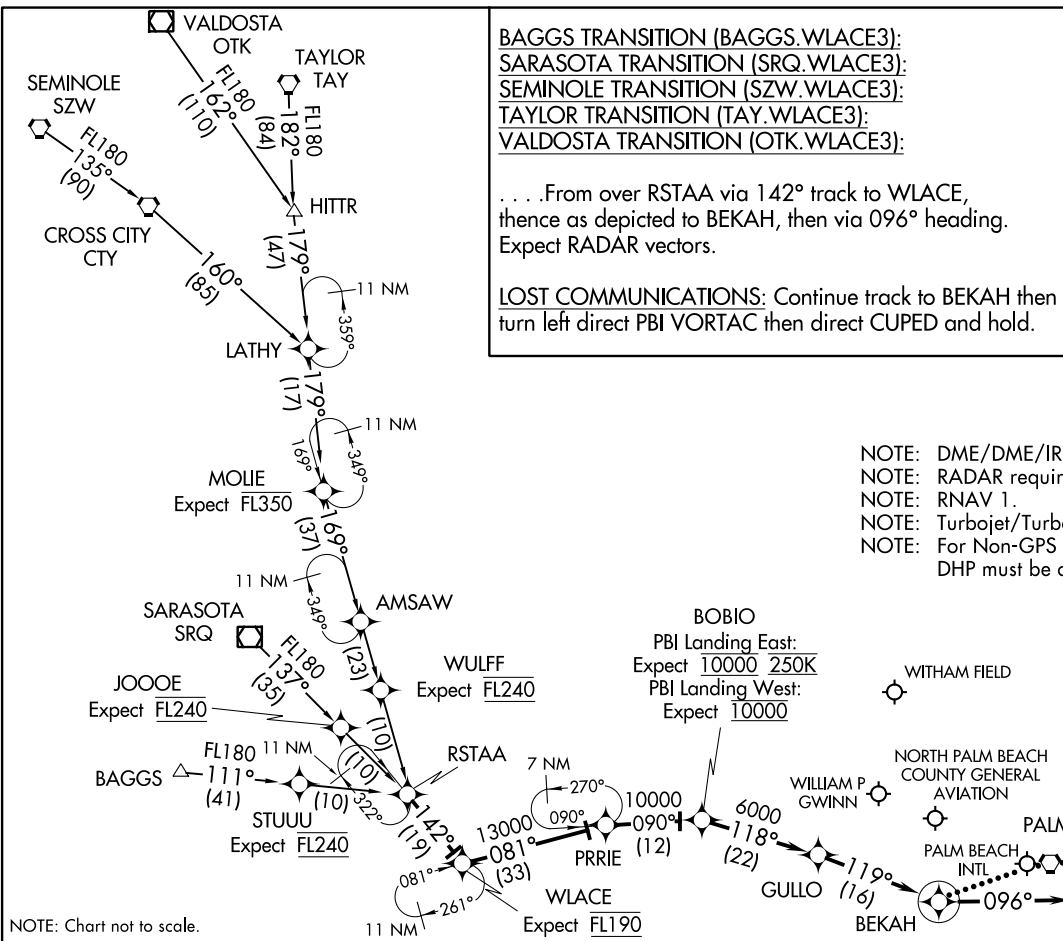


WLACE THREE ARRIVAL (RNAV)
(WLACE.WLACE3) 15SEP16

WEST PALM BEACH, FLORIDA



BAGGS TRANSITION (BAGGS.WLACE3):
SARASOTA TRANSITION (SRQ.WLACE3):
SEMINOLE TRANSITION (SZW.WLACE3):
TAYLOR TRANSITION (TAY.WLACE3):
VALDOSTA TRANSITION (OTK.WLACE3):

... From over RSTAA via 142° track to WLACE, thence as depicted to BEKAH, then via 096° heading. Expect RADAR vectors.

LOST COMMUNICATIONS: Continue track to BEKAH then turn left direct PBI VORTAC then direct CUPED and hold.

PALM BEACH APP CON 127.35 343.6
 PALM BEACH INTL D-ATIS 123.75



- NOTE: DME/DME/IRU or GPS required.
- NOTE: RADAR required.
- NOTE: RNAV 1.
- NOTE: Turbojet/Turboprop aircraft only.
- NOTE: For Non-GPS equipped aircraft, DHP must be operational.

NOTE: Chart not to scale.

(WLACE.WLACE3) 17173
WLACE THREE ARRIVAL (RNAV)

AL-449 (FAA)

WEST PALM BEACH, FLORIDA