

LOC/DME I-STF 109.9 Chan 36	APP CRS 360°	Rwy Idg 5550 TDZE 326 Apt Elev 333
---	------------------------	---

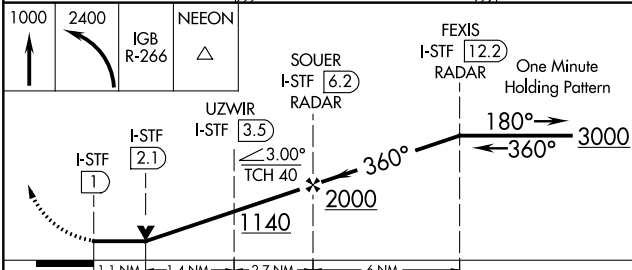
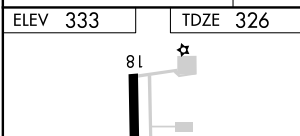
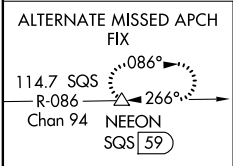
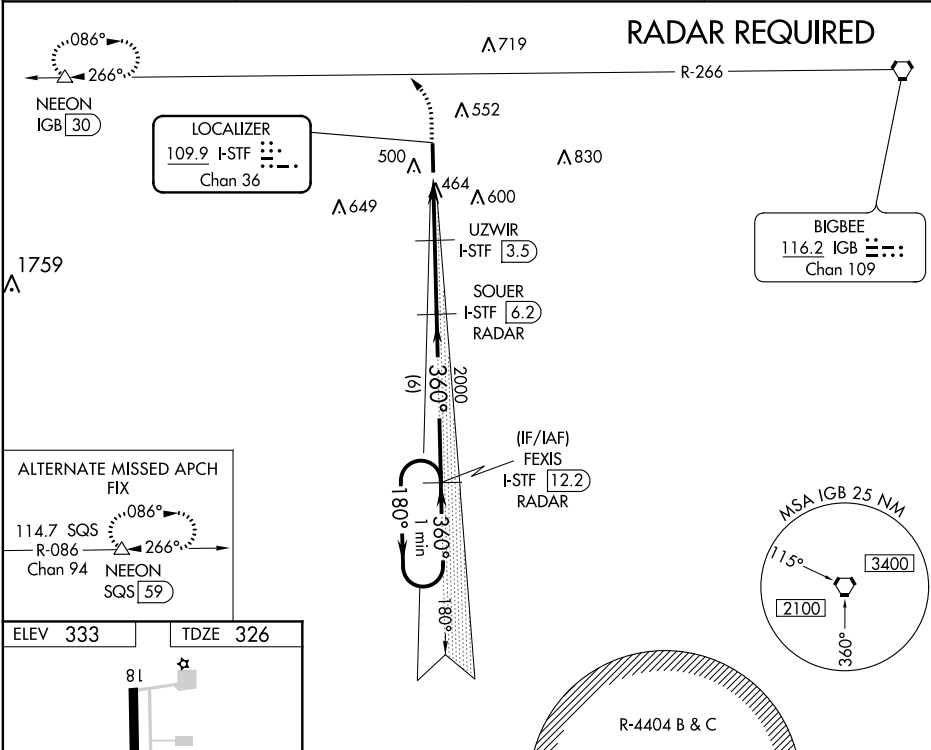
LOC/DME RWY 36

GEORGE M BRYAN (STF)

NA DME Required. When local altimeter setting not received, use Golden Triangle altimeter setting and increase all MDA 40 feet; increase S-36 Cats C/D visibility 1/8 mile and Circling Cat C visibility 1/4 mile. VDP NA when using Golden Triangle altimeter setting.

MISSED APPROACH: Climb to 1000, then climbing left turn to 2400 on IGB VORTAC R-266 to NEEON/IGB 30 DME and hold.

AWOS-3PT 118.975	COLUMBUS APP CON ★ 135.6 323.275	CLNC DEL 126.25	UNICOM 122.7 (CTAF) 0
----------------------------	--	---------------------------	---------------------------------



CATEGORY	A	B	C	D
S-36	720-1	395 (400-1)	720-1 1/8	395 (400-1 1/8)
C CIRCLING	920-1	587 (600-1)	920-1 1/2 587 (600-1 1/2)	1020-2 1/4 687 (700-2 1/4)

SC-4, 11 AUG 2022 to 08 SEP 2022

SC-4, 11 AUG 2022 to 08 SEP 2022

WAAS CH 50419 W18A	APP CRS 180°	Rwy Idg TDZE Apt Elev	4171 333 333
--	------------------------	-----------------------------	---

RNAV (GPS) RWY 18

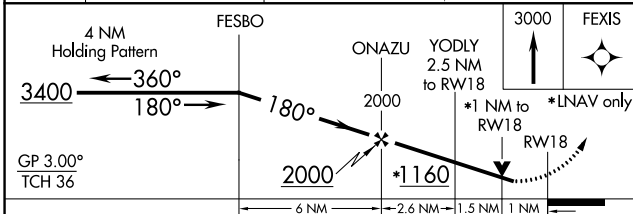
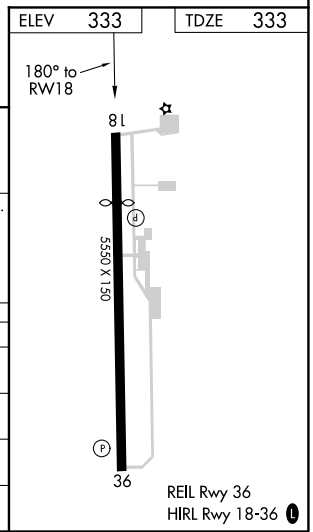
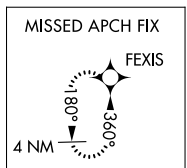
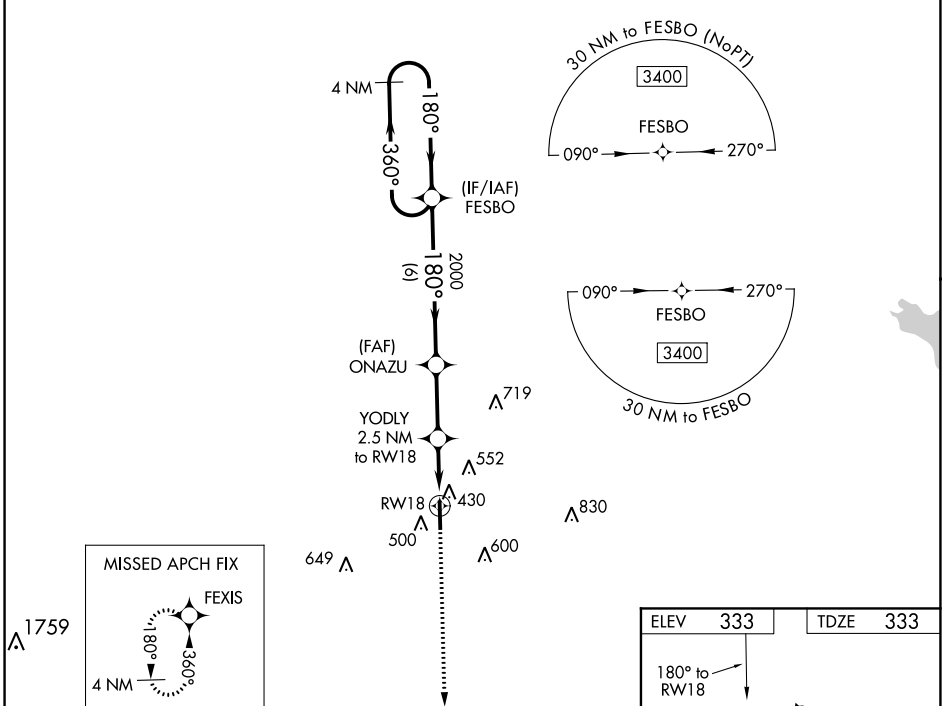
GEORGE M BRYAN (STF)

RNP APCH.

▼
▲
For uncompensated Baro-VNAV systems, LNAV/VNAV NA below -15°C or above 54°C. Baro-VNAV and VDP NA when using Golden Triangle Rgnl altimeter setting. Rwy 18 helicopter visibility reduction below 3/4 SM NA. When local altimeter setting not received, use Golden Triangle Rgnl altimeter setting and increase all DA/MDA 40 feet; increase LPV all Cats, LNAV/VNAV all Cats and LNAV Cats C/D visibility 1/8 mile, increase Circling Cat C visibility 1/4 mile.

MISSED APPROACH:
Climb to 3000 direct FEXIS and hold.

AWOS-3PT 118.975	COLUMBUS APP CON * 135.6 323.275	CLNC DEL 126.25	UNICOM 122.7 (CTAF) 0
----------------------------	--	---------------------------	---------------------------------



CATEGORY	A	B	C	D
LPV DA		633-1	300 (300-1)	
LNAV/VNAV DA		616-1	283 (300-1)	
LNAV MDA		680-1	347 (400-1)	
CIRCLING	920-1	587 (600-1)	920-1½ 587 (600-1½)	1020-2¼ 687 (700-2¼)

SC-4, 11 AUG 2022 to 08 SEP 2022

SC-4, 11 AUG 2022 to 08 SEP 2022

WAAS CH 53604 W 36A	APP CRS 360°	Rwy Idg THRE 321 Apt Elev 333
---	------------------------	---

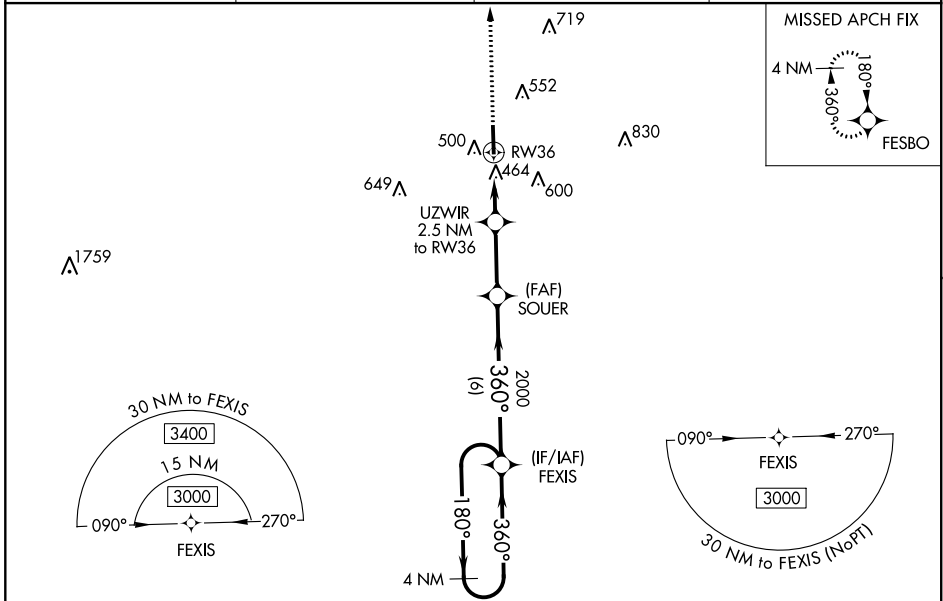
RNAV (GPS) RWY 36

GEORGE M BRYAN (STF)

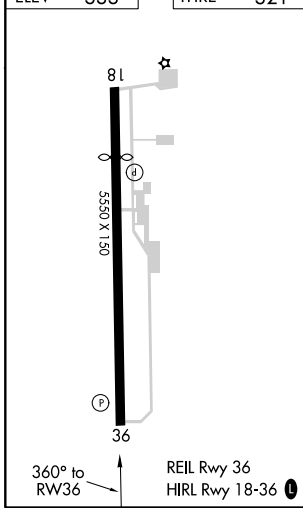
▼ **NA**
For uncompensated Baro-VNAV systems, LNAV/VNAV NA below -15°C (5°F) or above 54°C (130°F). DME/DME RNP-0.3 NA. Helicopter visibility reduction below 3/4 SM NA. When local altimeter setting not received, use Golden Triangle Rgnl altimeter setting and increase all DA/MDA 40 feet; increase LNAV/VNAV all Cats and LNAV Cats C/D visibility 1/8 mile. Increase Circling Cat C visibility 1/4 mile. Baro-VNAV and VDP NA when using Golden Triangle Rgnl altimeter setting. When VGSI inop, Circling Rwy 18 NA at night.

MISSED APPROACH: Climb to 3400 direct FESBO and hold, continue climb-in-hold to 3400.

AWOS-3PT 118.975	COLUMBUS APP CON* 135.6 323.275	CLNC DEL 126.25	UNICOM 122.7 (CTAF) 0
----------------------------	---	---------------------------	--



ELEV 333	THRE 321
----------	----------



3400	FESBO	UZWIR 2.5 NM to RWY 36	SOUER 2000	FESBO	4 NM Holding Pattern
*LNAV only.		*1.1 NM to RWY 36	*1140	360°	180° → 3000
		1.1 NM	1.4 NM	2.7 NM	6 NM
CATEGORY	A	B	C	D	
LPV DA	521-3/4		200 (200-3/4)		
LNAV/VNAV DA	645-1 1/8		324 (400-1 1/8)		
LNAV MDA	720-1 399 (400-1)		720-1 1/8 399 (400-1 1/8)		
CIRCLING	920-1	587 (600-1)	920-1 1/2 587 (600-1 1/2)	1020-2 1/4 687 (700-2 1/4)	

SC-4, 11 AUG 2022 to 08 SEP 2022

SC-4, 11 AUG 2022 to 08 SEP 2022