

APP CRS
221°

Rwy Idg **4671**
TDZE **17**
Apt Elev **19**

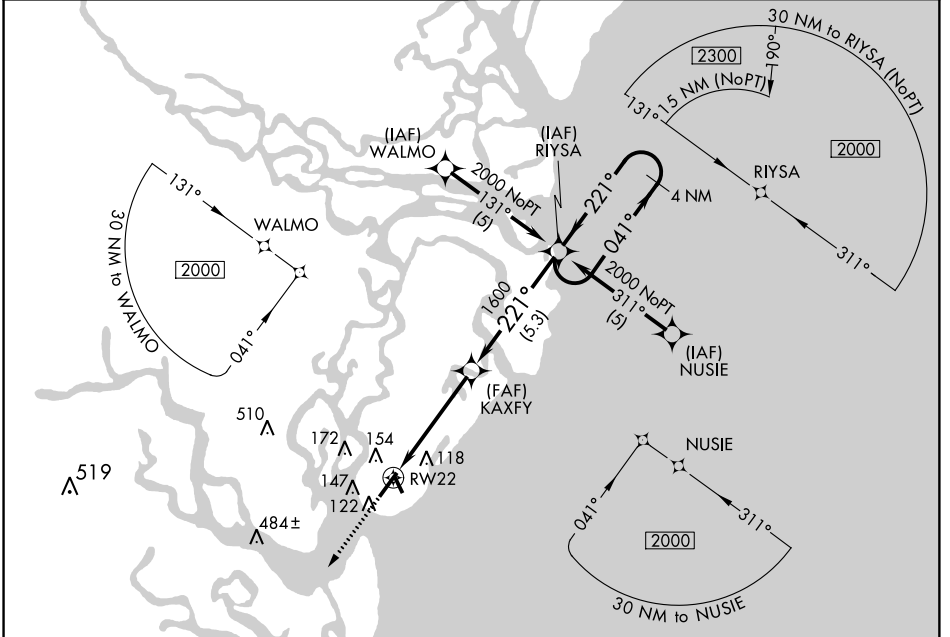
RNAV (GPS) RWY 22

McKINNON ST SIMONS ISLAND (SSI)

▽ GPS or RNP-0.3 Required. DME/DME RNP-0.3 NA.
△ NA If local altimeter setting not received, use Jacksonville Intl altimeter setting and increase all MDAs 100 feet.

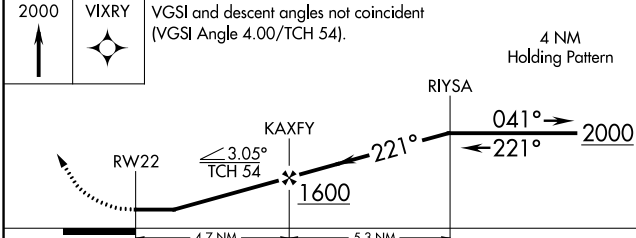
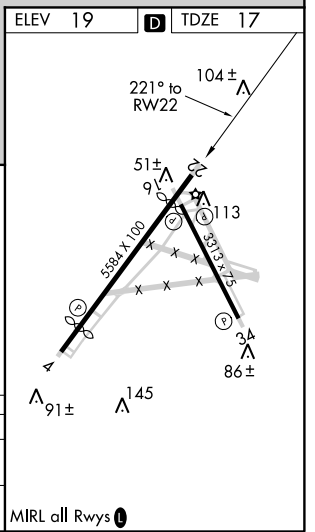
MISSED APPROACH: Climb to 2000 direct VIXRY WP and hold.

ASOS **120.025** JACKSONVILLE CENTER **126.75 277.4** UNICOM **123.05 (CTAF) 1**



SE-4, 29 MAR 2018 to 26 APR 2018

SE-4, 29 MAR 2018 to 26 APR 2018



CATEGORY	A	B	C	D
LNVA MDA	460-1	443 (500-1)	460-1½ 443 (500-1½)	460-1½ 443 (500-1½)
CIRCLING	460-1 441 (500-1)	480-1 461 (500-1)	480-1½ 461 (500-1½)	580-2 561 (600-2)

MIRL all Rwys 1

APP CRS	Rwy Idg	4798
041°	TDZE	16
	Apt Elev	19

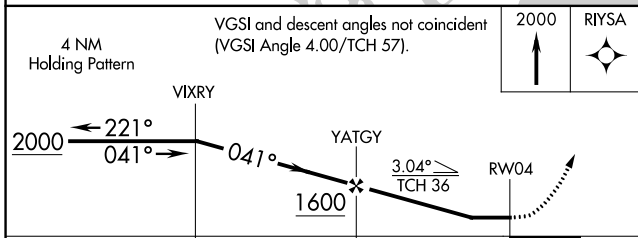
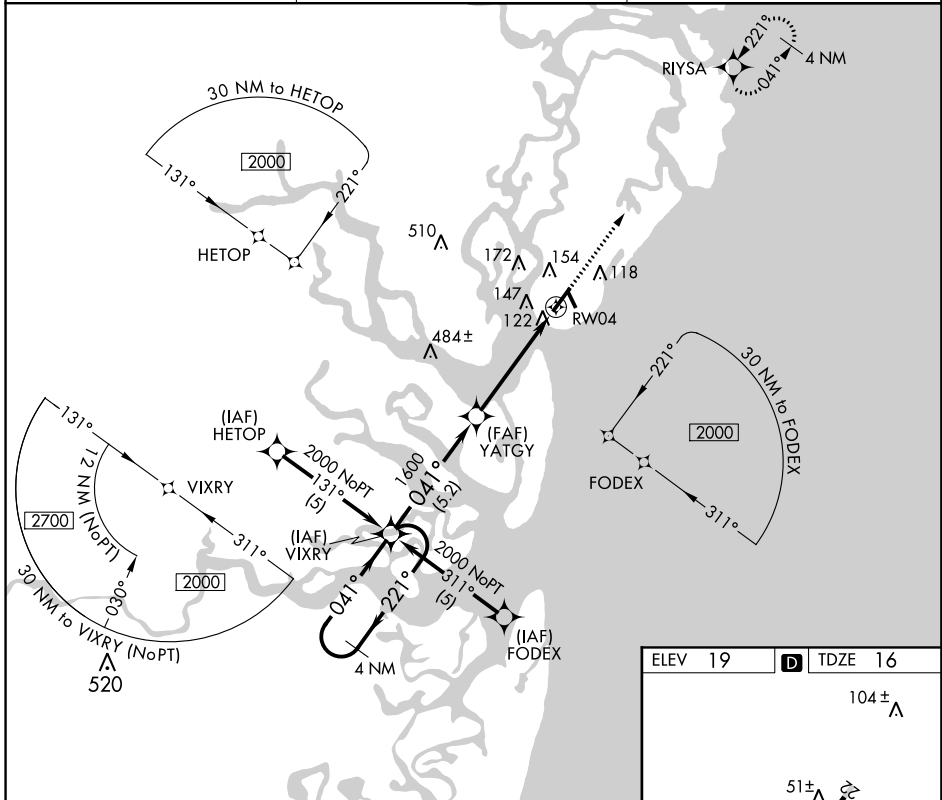
RNAV (GPS) RWY 4

McKINNON ST SIMONS ISLAND (SSI)

NA GPS or RNP-0.3 Required. DME/DME RNP-0.3 NA. If local altimeter setting not received, use Jacksonville Intl altimeter setting and increase all MDAs 100 feet.

MISSED APPROACH: Climb to 2000 direct RIYSA WP and hold.

ASOS 120.025	JACKSONVILLE CENTER 126.75 277.4	UNICOM 123.05 (CTAF) 0
------------------------	--	----------------------------------



ELEV 19	D TDZE 16
---------	------------------

Detailed approach path diagram showing altitudes (104±, 51±, 113, 91±, 145, 86±) and distances (5.58 x 100, 313.75, 3A, 86±). It also indicates the 041° to RW04 direction.

CATEGORY	A	B	C	D
LNNAV MDA	420-1	404 (500-1)	420-1¼	404 (500-1¼)
CIRCLING	460-1 441 (500-1)	480-1 461 (500-1)	480-1½ 461 (500-1½)	580-2 561 (600-2)

MIRL all Rwys 0

SE-4, 29 MAR 2018 to 26 APR 2018

SE-4, 29 MAR 2018 to 26 APR 2018

VORTAC SSI 109.8 Chan 35	APP CRS 027°	Rwy Idg TDZE Apt Elev	4798 16 19
--	------------------------	-----------------------------	---------------------------------------

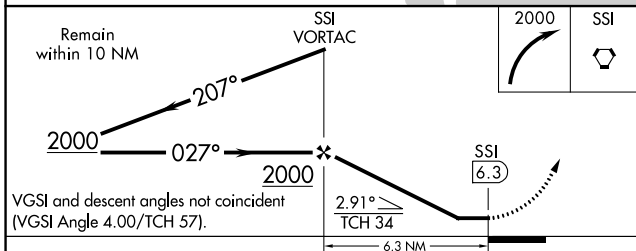
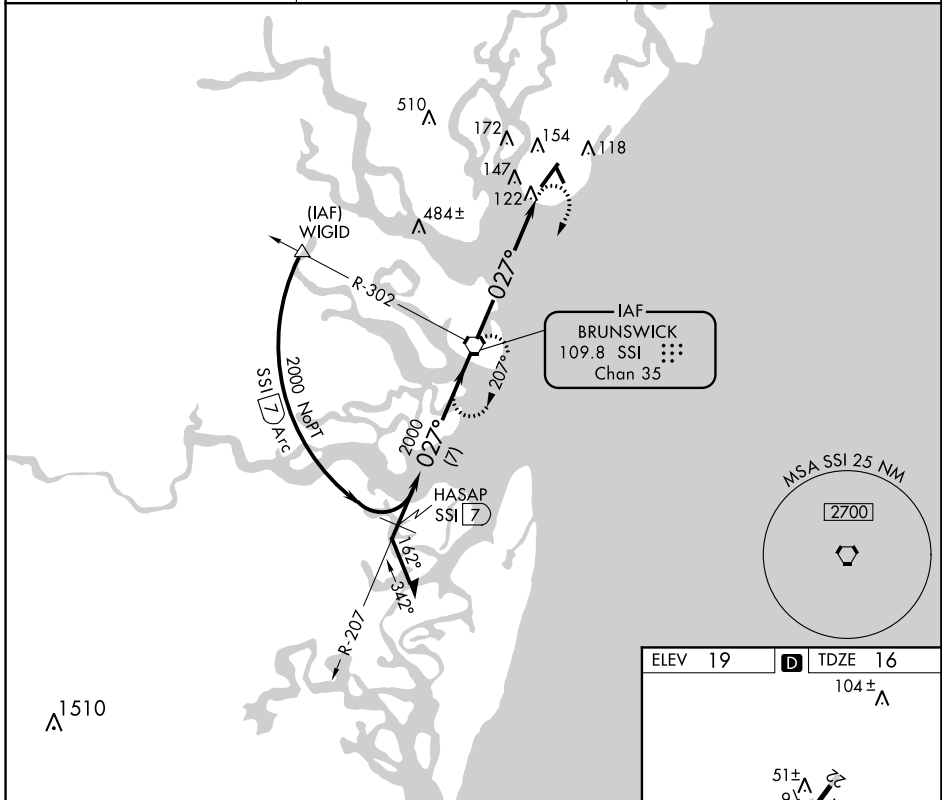
VOR RWY 4

McKINNON ST SIMONS ISLAND (SSI)

▽ If local altimeter setting not received, use Jacksonville Intl altimeter setting and increased all MDAs 100 ft.

MISSED APPROACH: Climbing right turn to 2000 direct SSI VORTAC and hold.

ASOS 120.025	JACKSONVILLE CENTER 126.75 277.4	UNICOM 123.05 (CTAF) 0
------------------------	--	----------------------------------



ELEV 19	D TDZE 16
104± Δ	
MIRL all Rwys 0	
FAF to MAP 6.3 NM	
Knots	60 90 120 150 180
Min:Sec	6:18 4:12 3:09 2:31 2:06

CATEGORY	A	B	C	D
S-4	500-1 484 (500-1)	500-1½ 484 (500-1¼)	500-1½ 484 (500-1½)	500-1½ 484 (500-1½)
CIRCLING	500-1 481 (500-1)	500-1½ 481 (500-1½)	500-1½ 481 (500-1½)	580-2 561 (600-2)