

APP CRS	Rwy Idg	4671
221°	TDZE	17
	Apt Elev	19

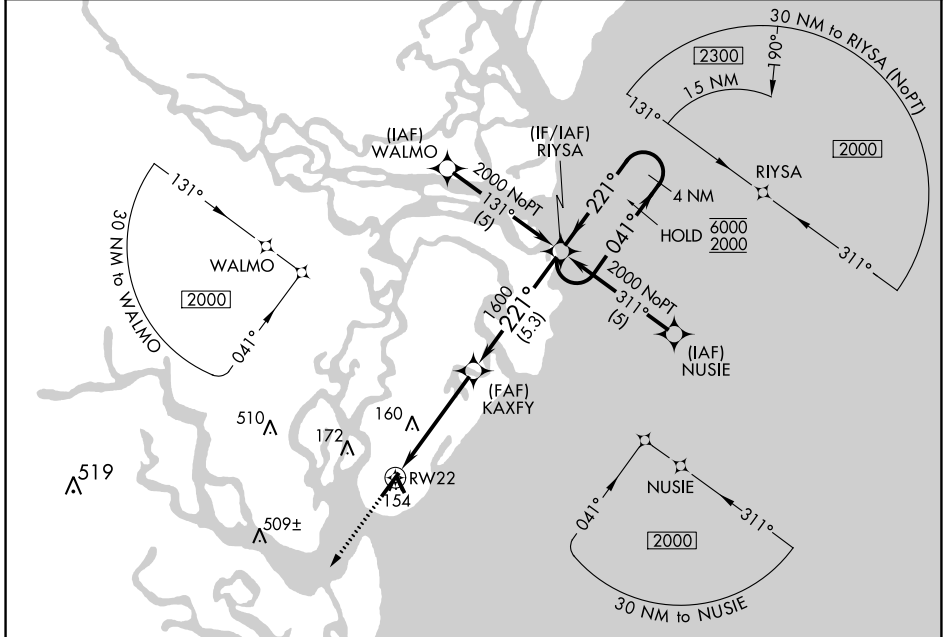
RNAV (GPS) RWY 22

ST SIMONS ISLAND (SSI)

RNP APCH.
 ▽ Straight-in Rwy 22 NA at night, Circling Rwy 16, 22, 34 NA at night. Rwy 22 helicopter visibility reduction below 1 SM NA.

MISSED APPROACH: Climb to 2000 direct VIXRY and hold.

ASOS 120.025	JACKSONVILLE CENTER 126.75 277.4	UNICOM 123.05 (CTAF)
------------------------	--	--------------------------------

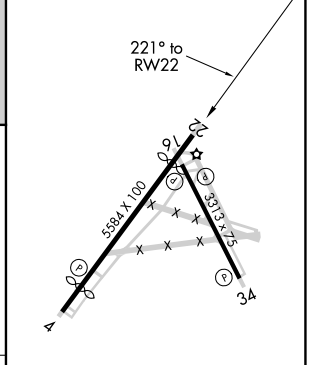
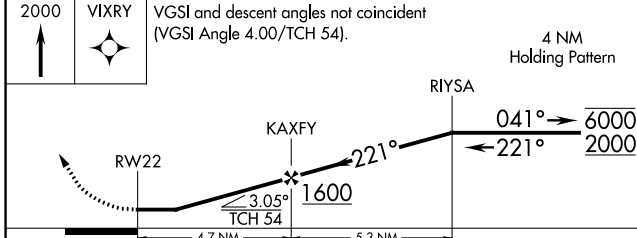


SE-4, 03 DEC 2020 to 31 DEC 2020

SE-4, 03 DEC 2020 to 31 DEC 2020

ELEV 19	D TDZE 17
---------	------------------

2000 VIXRY
 ↑
 ▽
 VGSI and descent angles not coincident (VGSI Angle 4.00/TCH 54).



CATEGORY	A	B	C	D
RNAV MDA	460-1	443 (500-1)	460-1½ 443 (500-1½)	460-1½ 443 (500-1½)
CIRCLING	460-1 441 (500-1)	480-1 461 (500-1)	480-1½ 461 (500-1½)	580-2 561 (600-2)

REIL Rwy 4
 MIRL Rwy 4-22
 HIRL Rwy 16-34

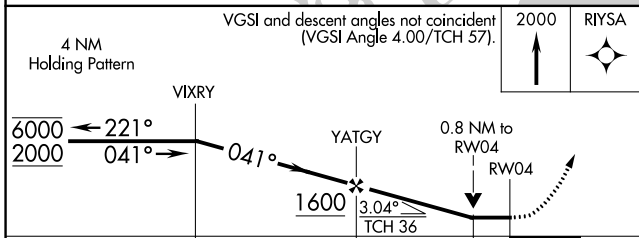
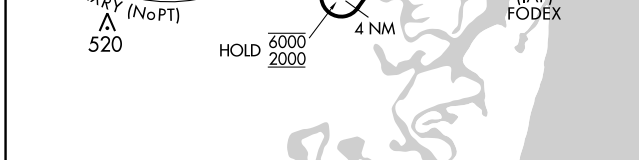
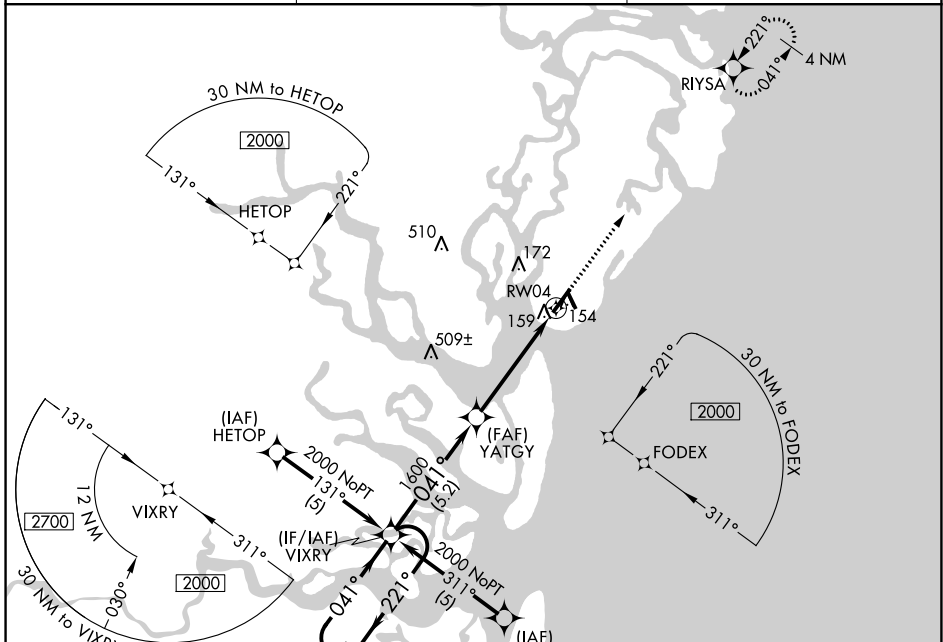
APP CRS	Rwy Idg	4798
041°	TDZE	16
	Apt Elev	19

RNAV (GPS) RWY 4

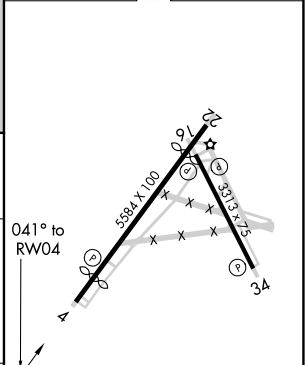
ST SIMONS ISLAND (SSI)

RNP APCH.	MISSED APPROACH: Climb to 2000 direct RIYSA and hold.
▼ Rwy 4 helicopter visibility reduction below 3/4 SM NA. Circling Rwy 16, 22, 34 NA at night.	

ASOS 120.025	JACKSONVILLE CENTER 126.75 277.4	UNICOM 123.05 (CTAF) 0
------------------------	--	----------------------------------



ELEV 19	TDZE 16
---------	---------



CATEGORY	A	B	C	D
LNVA MDA	420-1	404 (500-1)	420-1 1/4	404 (500-1 1/4)
CIRCLING	460-1 441 (500-1)	480-1 461 (500-1)	480-1 1/2 461 (500-1 1/2)	580-2 561 (600-2)

REIL Rwy 4 0
MIRL Rwy 4-22 0
HIRL Rwy 16-34 0

SE-4, 03 DEC 2020 to 31 DEC 2020

SE-4, 03 DEC 2020 to 31 DEC 2020

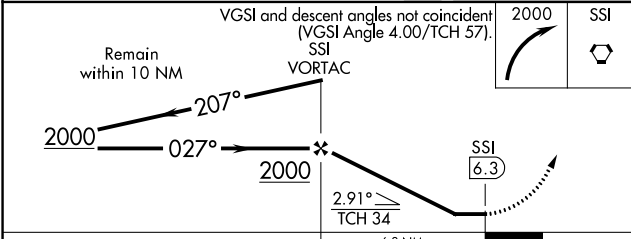
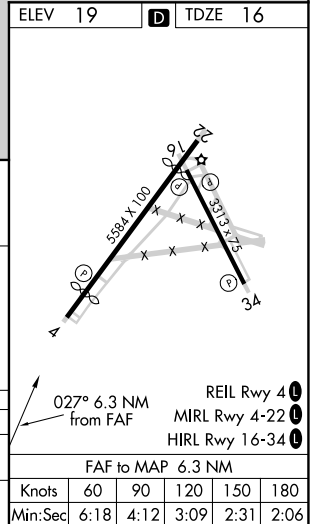
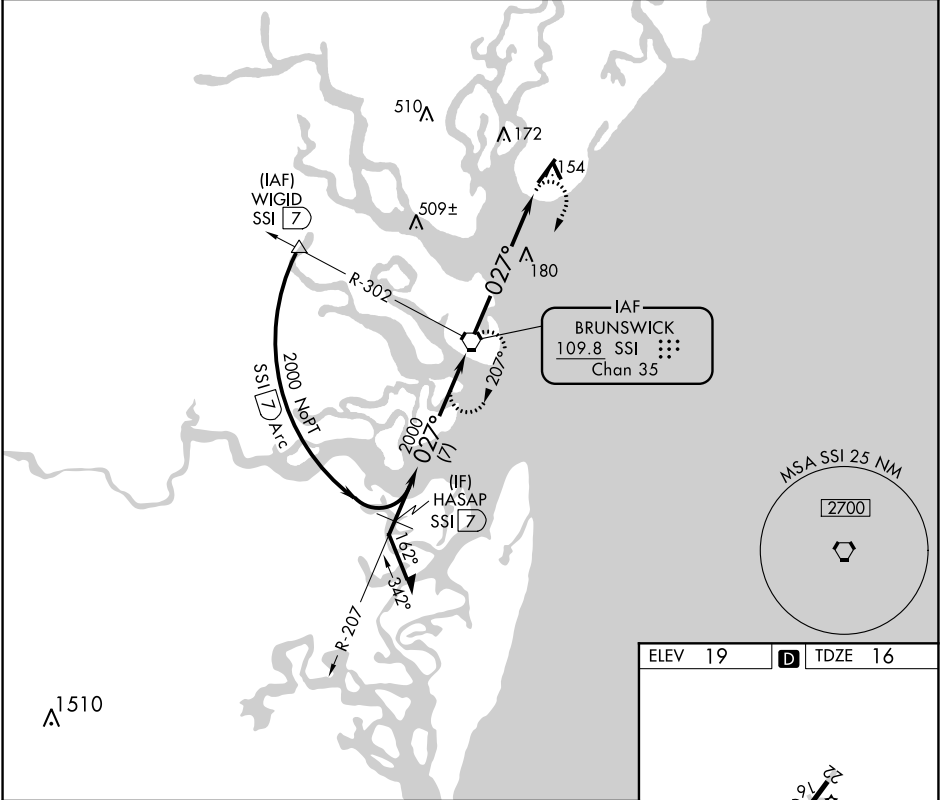
VORTAC SSI	APP CRS	Rwy Idg	4798
109.8	027°	TDZE	16
Chan 35		Apt Elev	19

VOR RWY 4
ST SIMONS ISLAND (SSI)

▼ Rwy 4 helicopter visibility reduction below 3/4 SM NA. Circling Rwy 16, 22, 34 NA at night.

MISSED APPROACH: Climbing right turn to 2000 direct SSI VORTAC and hold.

ASOS 120.025	JACKSONVILLE CENTER 126.75 277.4	UNICOM 123.05 (CTAF) 0
------------------------	--	----------------------------------



CATEGORY	A	B	C	D
S-4	500-1	484 (500-1)	500-1 3/8 484 (500-1 3/8)	500-1 1/2 484 (500-1 1/2)
CIRCLING	500-1	481 (500-1)	500-1 1/2 481 (500-1 1/2)	580-2 561 (600-2)