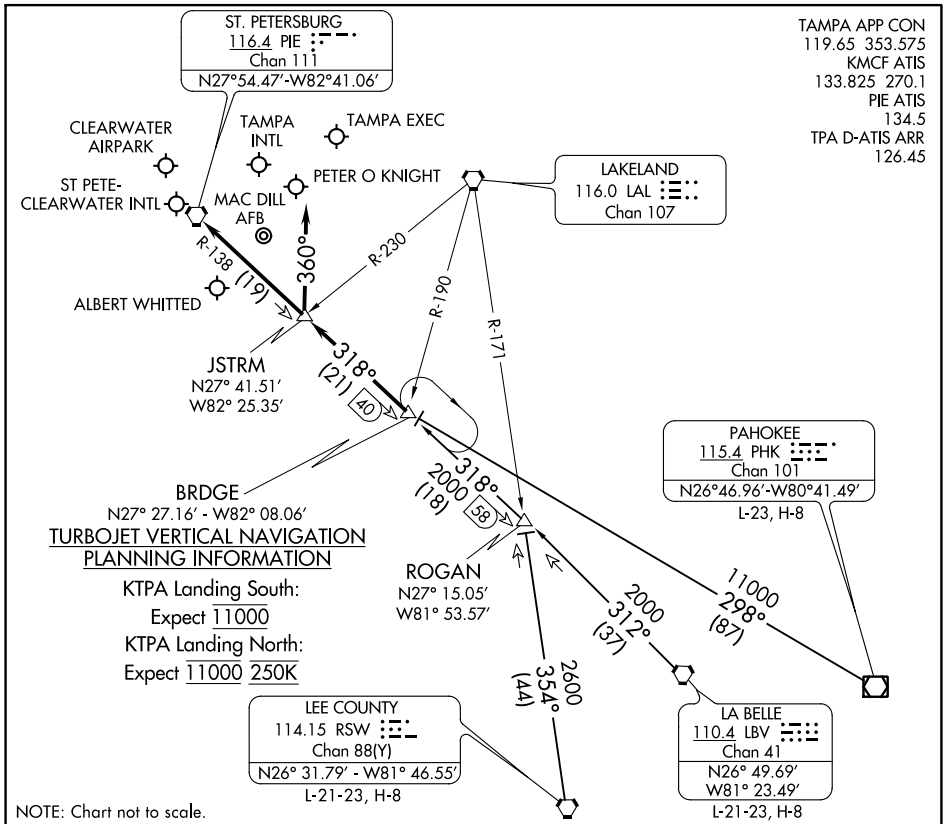


BRDGE EIGHT ARRIVAL

TAMPA, FLORIDA



TAMPA APP CON
 119.65 353.575
 KMCF ATIS
 133.825 270.1
 PIE ATIS
 134.5
 TPA D-ATIS ARR
 126.45

BRDGE
 N27° 27.16' - W82° 08.06'
TURBOJET VERTICAL NAVIGATION
PLANNING INFORMATION
 KTPA Landing South:
 Expect 11000
 KTPA Landing North:
 Expect 11000 250K

LEE COUNTY
 114.15 RSW
 Chan 88(Y)
 N26° 31.79' - W81° 46.55'
 L-21-23, H-8

PAHOKEE
 115.4 PHK
 Chan 101
 N26° 46.96' - W80° 41.49'
 L-23, H-8

LA BELLE
 110.4 LBV
 Chan 41
 N26° 49.69' - W81° 23.49'
 L-21-23, H-8

ARRIVAL ROUTE DESCRIPTION

- LA BELLE TRANSITION (LBV.BRDGE8):** From over LBV VORTAC on LBV R-312 & PIE R-138 to BRDGE INT. Thence. . .
- LEE COUNTY TRANSITION (RSW.BRDGE8):** From over RSW VORTAC on RSW R-354 to ROGAN INT, then on PIE R-138 to BRDGE INT. Thence. . .
- PAHOKEE TRANSITION (PHK.BRDGE8):** From over PHK VOR/DME on PHK R-298 to BRDGE INT. Thence. . .

KTPA:
 . . . RWY 19L/R: From over BRDGE INT on PIE R-138 to JSTRM INT. Depart JSTRM INT heading 360° for vector to final approach course.
 . . . RWY 01L/R: From over BRDGE INT on PIE R-138 to PIE VORTAC. Expect RADAR vector to final approach course after BRDGE INT.

KPIE, KCLW, KTPF, KSPG, KMCF, KVDF:
 . . . From over BRDGE INT on PIE R-138 to PIE VORTAC. Expect RADAR vector to final approach course/airport after BRDGE INT.

LOST COMMUNICATIONS: STANDARD.

BRDGE EIGHT ARRIVAL

TAMPA, FLORIDA

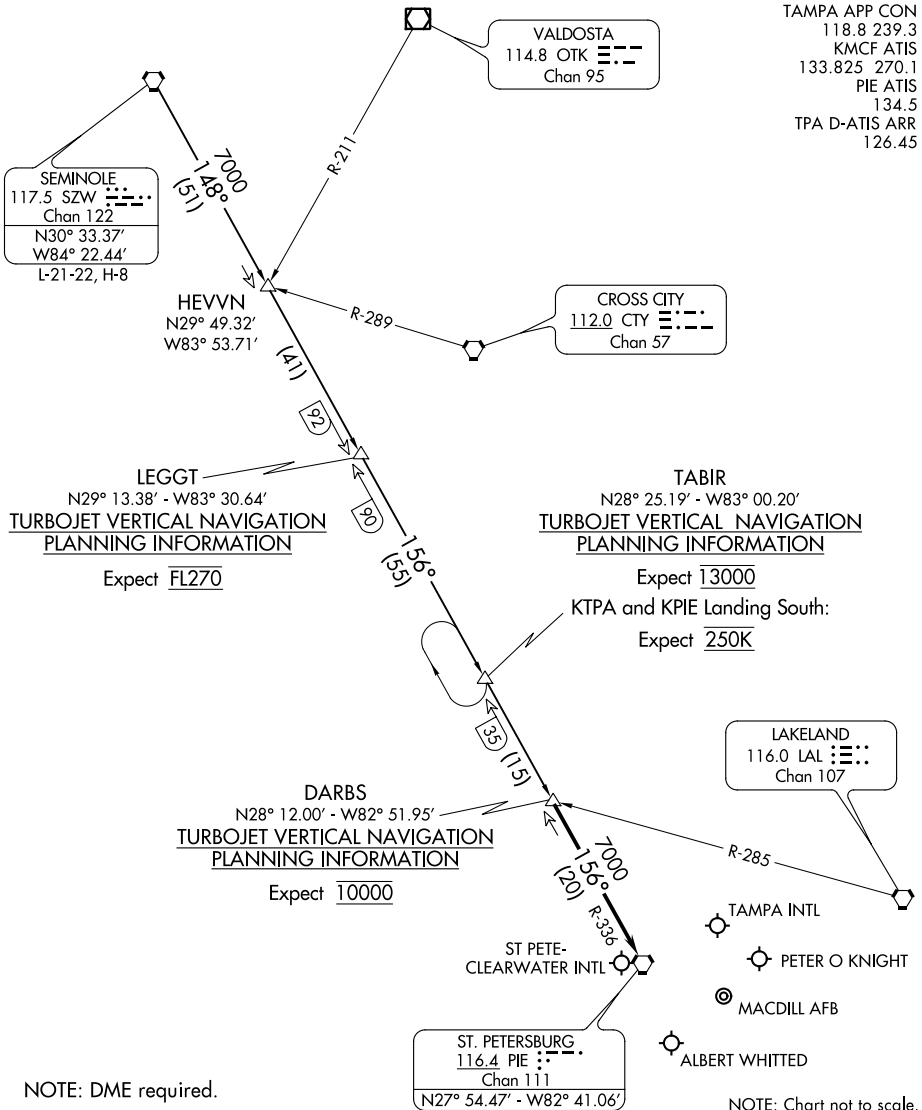
SE-3, 19 MAY 2022 to 16 JUN 2022

SE-3, 19 MAY 2022 to 16 JUN 2022

DARBS THREE ARRIVAL

TAMPA, FLORIDA

TAMPA APP CON
 118.8 239.3
 KMCF ATIS
 133.825 270.1
 PIE ATIS
 134.5
 TPA D-ATIS ARR
 126.45



SE-3, 19 MAY 2022 to 16 JUN 2022

SE-3, 19 MAY 2022 to 16 JUN 2022

NOTE: DME required.

NOTE: Chart not to scale.

ARRIVAL ROUTE DESCRIPTION

SEMINOLE TRANSITION (SZW.DARBS3): From over SZW VORTAC on SZW R-148 and PIE R-336 to DARBS INT. Thence. . . .

. . . .from over DARBS INT on PIE R-336 to PIE VORTAC. Expect RADAR vectors to final approach course.

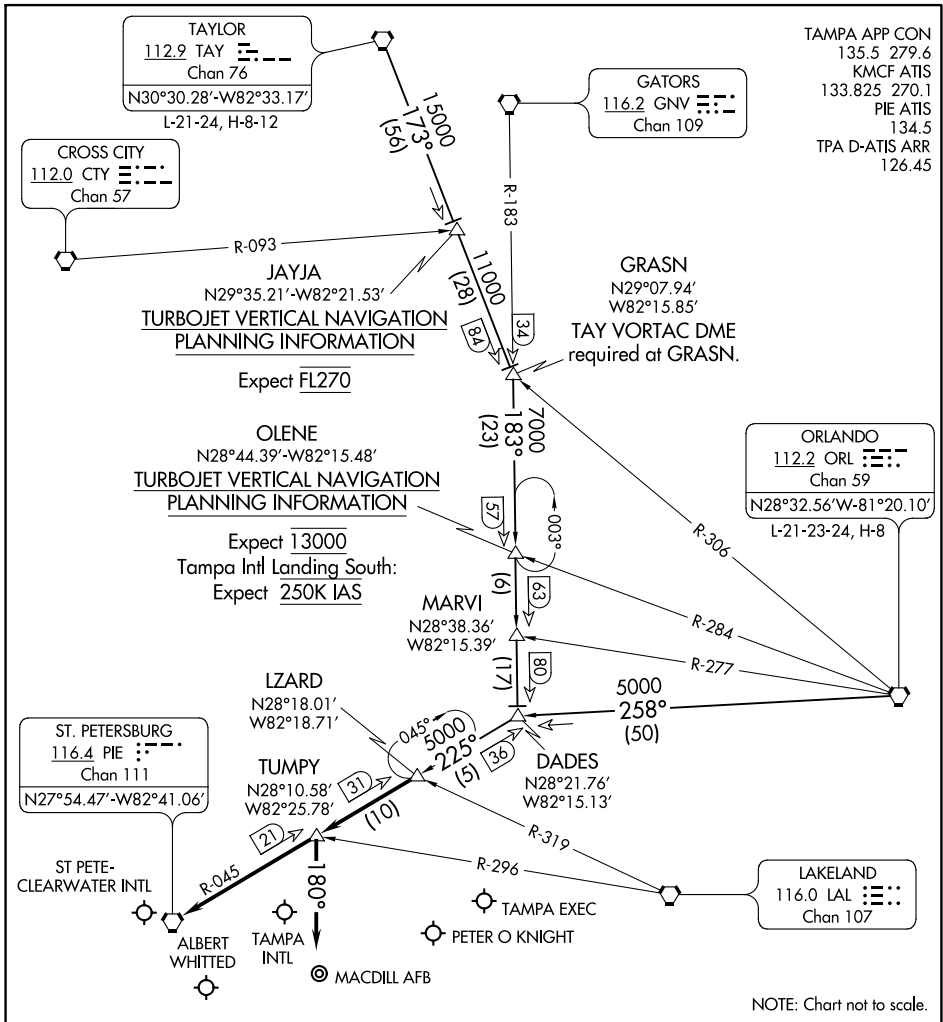
LOST COMMUNICATIONS: STANDARD.

DARBS THREE ARRIVAL

TAMPA, FLORIDA

LZARD SIX ARRIVAL

TAMPA, FLORIDA



SE-3, 19 MAY 2022 to 16 JUN 2022

SE-3, 19 MAY 2022 to 16 JUN 2022

TAYLOR TRANSITION (TAY.LZARD6): From over TAY VORTAC on TAY R-173 to GRASN INT, then on GNV R-183 to DADES INT, then on PIE R-045 to LZARD INT. Thence. . . .

ORLANDO TRANSITION (ORL.LZARD6): From over ORL VORTAC on ORL R-258 to DADES INT, then on PIE R-045 to LZARD INT. Thence. . . .

TAMPA INTL:
 . . . RUNWAYS 1L/R: From over LZARD INT on PIE R-045 to TUMPY INT. Depart TUMPY INT heading 180° for RADAR vectors to final approach course.
 . . . RUNWAYS 19L/R: From over LZARD INT on PIE R-045 to PIE VORTAC. Expect RADAR vectors to final approach after LZARD INT.
ALL OTHER AIRPORTS: From over LZARD INT on PIE R-045 to PIE VORTAC. Expect RADAR vectors to the airport after LZARD INT.

LZARD SIX ARRIVAL

TAMPA, FLORIDA