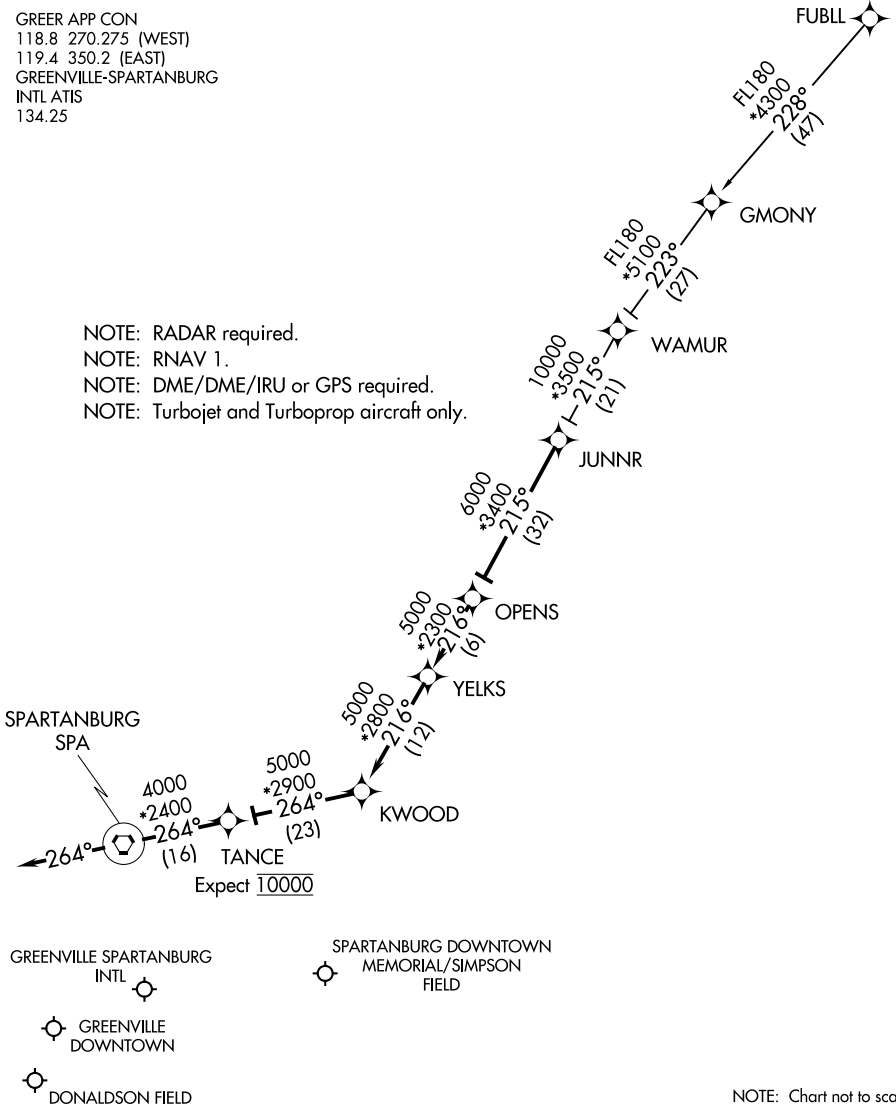


JUNNR THREE ARRIVAL (RNAV)

GREER, SOUTH CAROLINA

GREER APP CON
 118.8 270.275 (WEST)
 119.4 350.2 (EAST)
 GREENVILLE-SPARTANBURG
 INTL ATIS
 134.25

- NOTE: RADAR required.
- NOTE: RNAV 1.
- NOTE: DME/DME/IRU or GPS required.
- NOTE: Turbojet and Turboprop aircraft only.



SE-2: 27 FEB 2020 to 26 MAR 2020

SE-2: 27 FEB 2020 to 26 MAR 2020

NOTE: Chart not to scale.

ARRIVAL ROUTE DESCRIPTION

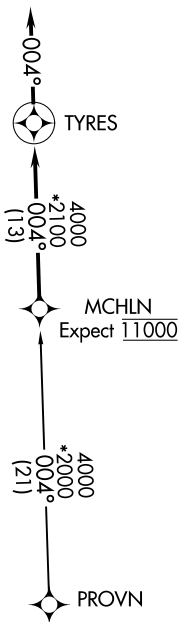
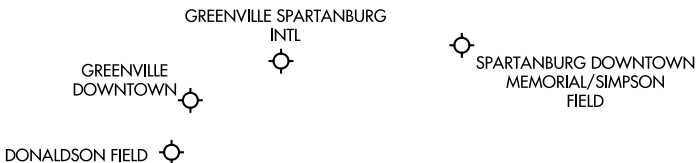
FUBLL TRANSITION (FUBLL.JUNNR3)

From JUNNR on track 215° to OPENS, then on track 216° to YELKS, then on track 216° to KWOOD, then on track 264° to TANCE, then on track 264° to SPA VORTAC, then on heading 264° or as assigned by ATC. Expect RADAR vectors to final approach course.

MCHLN TWO ARRIVAL (RNAV)

GREER, SOUTH CAROLINA

GREER APP CON
 118.8 270.275 (WEST)
 119.4 350.2 (EAST)
 GREENVILLE-SPARTANBURG INTL ATIS
 134.25



- NOTE: RADAR required.
- NOTE: RNAV 1.
- NOTE: DME/DME/IRU or GPS required.
- NOTE: Turbojet and Turboprop aircraft only.

NOTE: Chart not to scale.

ARRIVAL ROUTE DESCRIPTION

PROVN TRANSITION (PROVN.MCHLN2)

From MCHLN on track 004° to TYRES, then on heading 004°.
 Expect RADAR vectors to final approach course.

SE-2: 27 FEB 2020 to 26 MAR 2020

SE-2: 27 FEB 2020 to 26 MAR 2020

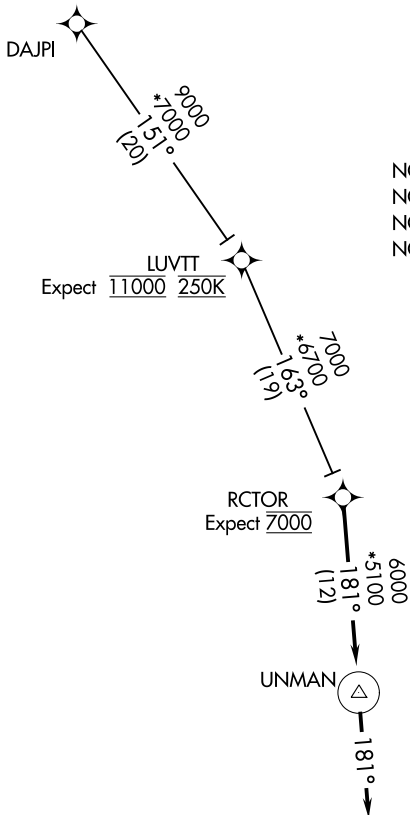
MCHLN TWO ARRIVAL (RNAV)

GREER, SOUTH CAROLINA

RCTOR TWO ARRIVAL (RNAV)

GREER, SOUTH CAROLINA

GREER APP CON
118.8 270.275 (WEST)
119.4 350.2 (EAST)
GREENVILLE-SPARTANBURG INTL ATIS
134.25



- NOTE: RADAR required.
- NOTE: RNAV 1.
- NOTE: DME/DME/IRU or GPS required.
- NOTE: Turbojet and Turboprop aircraft only.

LUVTT
Expect 11000 250K

RCTOR
Expect 7000

UNMAN

DONALDSON
FIELD

GREENVILLE
DOWNTOWN

GREENVILLE
SPARTANBURG
INTL

SPARTANBURG DOWNTOWN
MEMORIAL/SIMPSON
FIELD

NOTE: Chart not to scale.

ARRIVAL ROUTE DESCRIPTION

DAJPI TRANSITION (DAJPI.RCTOR2)

From RCTOR on track 181° to UNMAN, then on heading 181°. Expect RADAR vectors to final approach course.

SE-2, 27 FEB 2020 to 26 MAR 2020

SE-2, 27 FEB 2020 to 26 MAR 2020

WORXS TWO ARRIVAL (RNAV)
 (WORXS.WORXS2) 25APR19

(WORXS.WORXS2) 19115
 WORXS TWO ARRIVAL (RNAV)

AL-5124 (FAA)

GREER, SOUTH CAROLINA

GREER, SOUTH CAROLINA

GREER APP CON
 118.8 270.275 (WEST)
 119.4 350.2 (EAST)
 GREENVILLE-SPARTANBURG INTL ATIS
 134.25

GREENVILLE DOWNTOWN
 GREENVILLE SPARTANBURG INTL
 SPARTANBURG DOWNTOWN MEMORIAL/SIMPSON FIELD

DONALDSON FIELD
 TDAAY

4000
 *2200
 043°
 (1.6)
 ANGRI
 Expect 11000

8000
 *2100
 043°
 (28)
 WORXS

10000
 *2300
 063°
 (1.5)
 EVRRR

12000
 *2200
 066°
 (20)
 CNTLR

14000
 *2400
 080°
 (1.6)
 BESTT

- NOTE: RADAR required.
- NOTE: RNAV 1.
- NOTE: DME/DME/IRU or GPS required.
- NOTE: Turbojet and turboprop aircraft only.
- NOTE: CNTLR transition for KATL departures only.



ARRIVAL ROUTE DESCRIPTION

BESTT TRANSITION (BESTT.WORXS2)
CNTLR TRANSITION (CNTLR.WORXS2)

From WORXS on track 043° to ANGRI, then on track 043° to TDAAY, then on heading 043°. Expect RADAR vectors to final approach course.

NOTE: Chart not to scale.