

WAAS CH <b>72718</b> <b>W25A</b>	APP CRS <b>246°</b>	Rwy Idg TDZE Apt Elev <b>7200</b> <b>6405</b> <b>6415</b>
----------------------------------------	------------------------	--------------------------------------------------------------------------

# RNAV (GPS) RWY 25

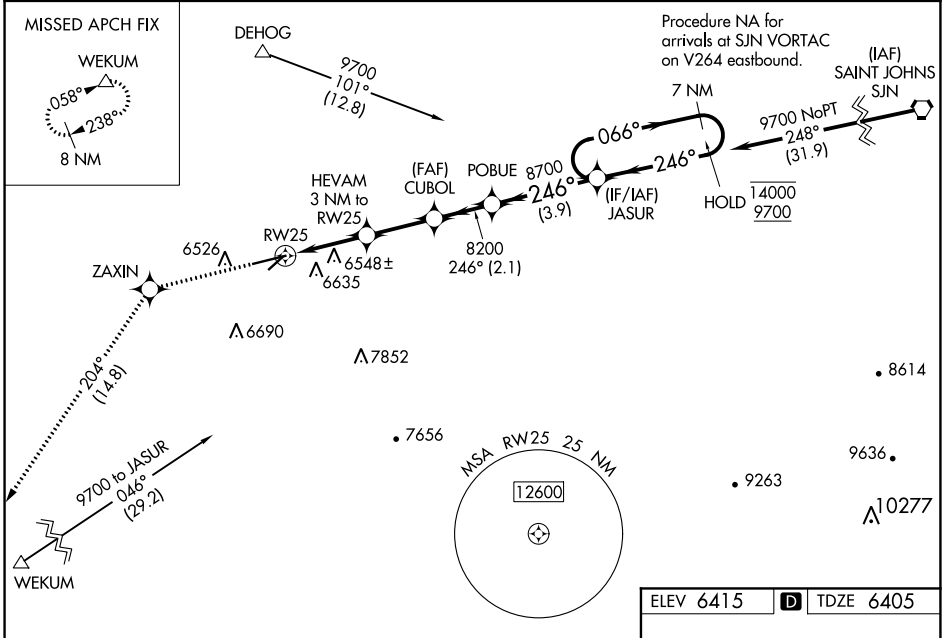
SHOW LOW RGNL (SOW)

RNP APCH.

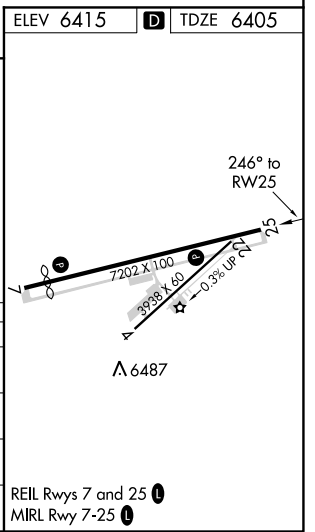
**▼** Circling to Rwy 4 NA at night.  
**▲** Circling NA southeast of Rwys 4 and 25.  
 For uncompensated Baro-VNAV systems,  
 LNAV/VNAV NA below -14°C (7°F) or above 45°C (114°F).

MISSED APPROACH: Climb to 13000 direct ZAXIN and on track 204° to WEKUM and hold, continue climb-in-hold to 13000.

AWOS-3 <b>118.075</b>	ALBUQUERQUE CENTER <b>132.9 239.05</b>	UNICOM <b>123.0 (CTAF) 0</b>
--------------------------	-------------------------------------------	---------------------------------



13000	ZAXIN	tr 204°	WEKUM	7 NM Holding Pattern
*RNAV only				
	HEVAM 3 NM to RW25	CUBOL 8200	POBUE	JASUR
	7400*	8200	8700	14000 / 9700
	1.1 NM	1.9 NM	2.5 NM	2.1 NM
	3.9 NM			
CATEGORY	A	B	C	D
LPV DA		6605-3/4	200 (200-3/4)	
RNAV/VNAV DA		6704-7/8	299 (300-7/8)	
RNAV MDA	6800-1	395 (400-1)	6800-1 1/8	395 (400-1 1/8)
<b>C</b> CIRCLING	6840-1 425 (500-1)	6880-1 465 (500-1)	7180-2 1/4 765 (800-2 1/4)	7340-3 925 (1000-3)



SW-4, 02 DEC 2021 to 30 DEC 2021

SW-4, 02 DEC 2021 to 30 DEC 2021