

WAAS CH 82303 W13A	APP CRS 124°	Rwy Idg TDZE Apt Elev	6600 4313 4313
---------------------------------	------------------------	-----------------------------	---

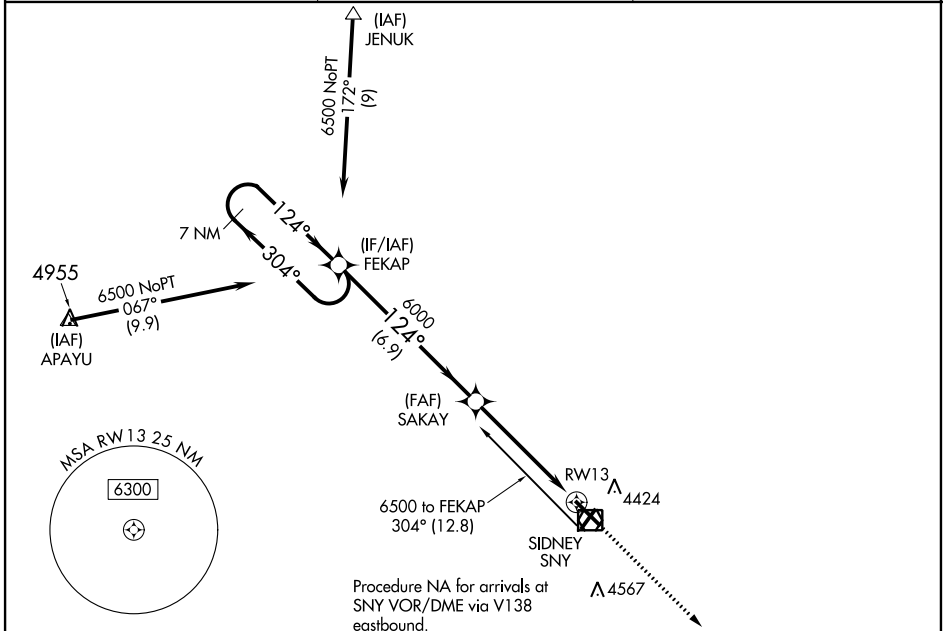
RNAV (GPS) RWY 13

SIDNEY MUNI/LLOYD W CARR FIELD (SNY)

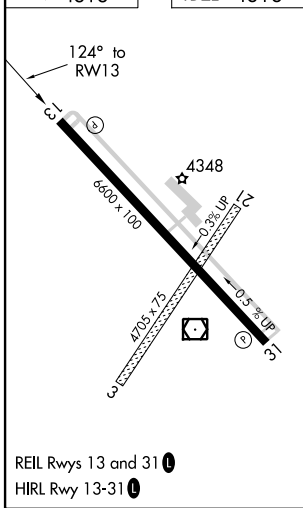
⚠ DME/DME RNP-0.3 NA. VDP NA when using Kimball altimeter setting. When local altimeter setting not received, use Kimball altimeter setting: increase DA to 4723 feet and visibility ¾ SM; increase all MDAs 160 feet and visibility Cats C and D ½ SM.

MISSED APPROACH: Climb to 6000 direct GIGDE and hold.

ASOS 125.775	DENVER CENTER 118.475 225.4	UNICOM 122.8 (CTAF) 0
------------------------	---------------------------------------	---------------------------------



ELEV 4313	TDZE 4313
-----------	-----------



	7 NM Holding Pattern FEKAP		SAKAY	6000	GIGDE
	6500	← 304°	→ 124°	→ 124°	↑ 6000
	GP 3.00°		6000		*1.4 NM to RWY13
	TCH 44				*LNAV only.
		← 6.9 NM	← 3.7 NM	← 1.4 NM	
CATEGORY	A	B	C	D	
LPV DA	4563-¾ 250 (300-¾)				
LNAV MDA	4800-1	487 (500-1)	4800-1¼ 487 (500-1¼)	4800-1½ 487 (500-1½)	
CIRCLING	4800-1	487 (500-1)	4920-1¾ 607 (700-1¾)	4960-2 647 (700-2)	

NC-2, 15 JUL 2021 to 12 AUG 2021

NC-2, 15 JUL 2021 to 12 AUG 2021

APP CRS 304°	Rwy Idg 6600
	TDZE 4290
	Apt Elev 4313

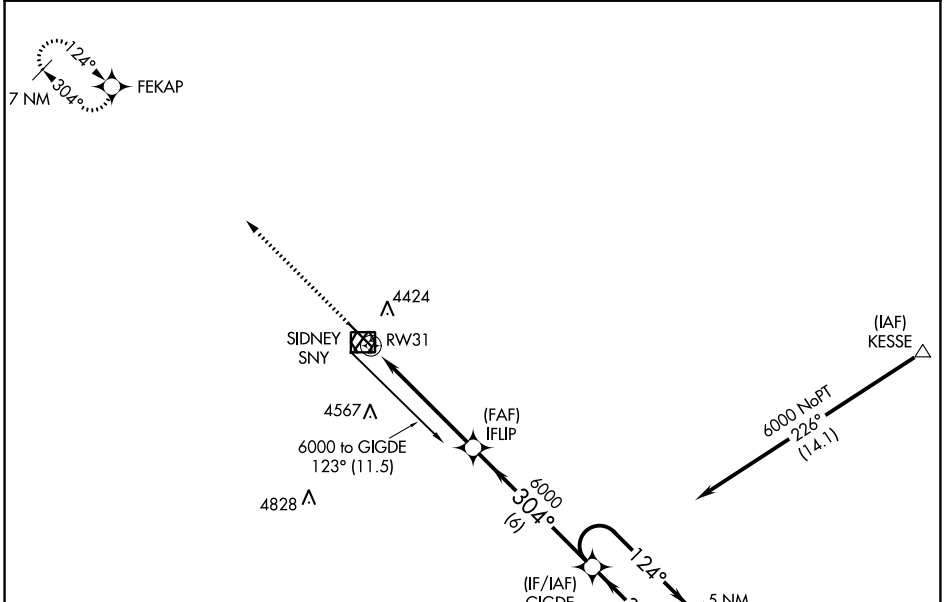
RNAV (GPS) RWY 31

SIDNEY MUNI/LLOYD W CARR FIELD (SNY)

⚠ DME/DME RNP-0.3 NA. When local altimeter setting not received, use Kimball altimeter setting: increase all MDAs 160 feet and visibility Cats C and D ½ SM.

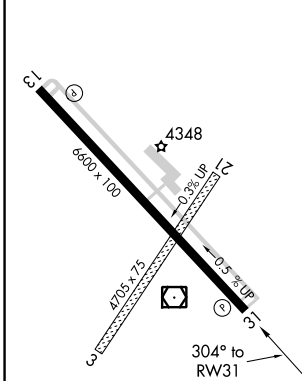
⚠ MISSED APPROACH: Climb to 6500 direct FEKAP and hold.

ASOS 125.775	DENVER CENTER 118.475 225.4	UNICOM 122.8 (CTAF) 0
------------------------	---------------------------------------	---------------------------------

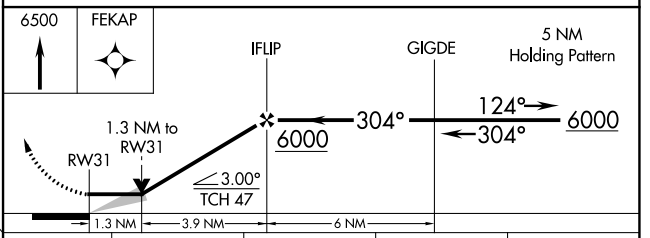


⚠ 4990 ±

ELEV 4313	TDZE 4290
-----------	-----------



REIL Rwy 13 and 31 **0**
HIRL Rwy 13-31 **0**



CATEGORY	A	B	C	D
LNAV MDA	4740-1	450 (500-1)	4740-1¼ 450 (500-1¼)	4740-1½ 450 (500-1½)
CIRCLING	4760-1 447 (500-1)	4780-1 467 (500-1)	4920-1¾ 607 (700-1¾)	4960-2 647 (700-2)

NC-2, 15 JUL 2021 to 12 AUG 2021

NC-2, 15 JUL 2021 to 12 AUG 2021

VOR/DME SNY 115.9 Chan 106	APP CRS 130°	Rwy Idg 6600 TDZE 4313 Apt Elev 4313
--	------------------------	---

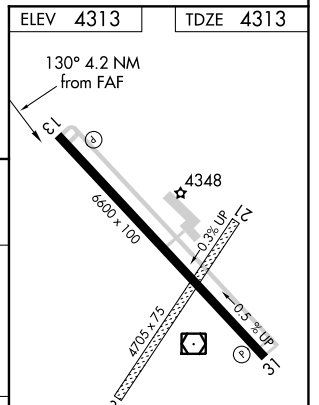
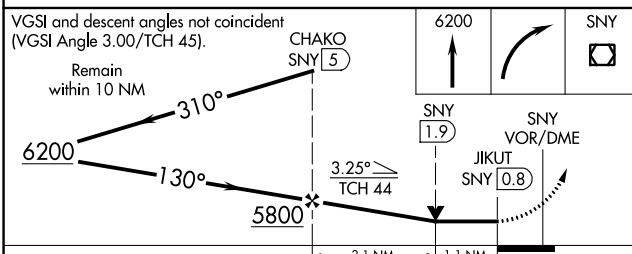
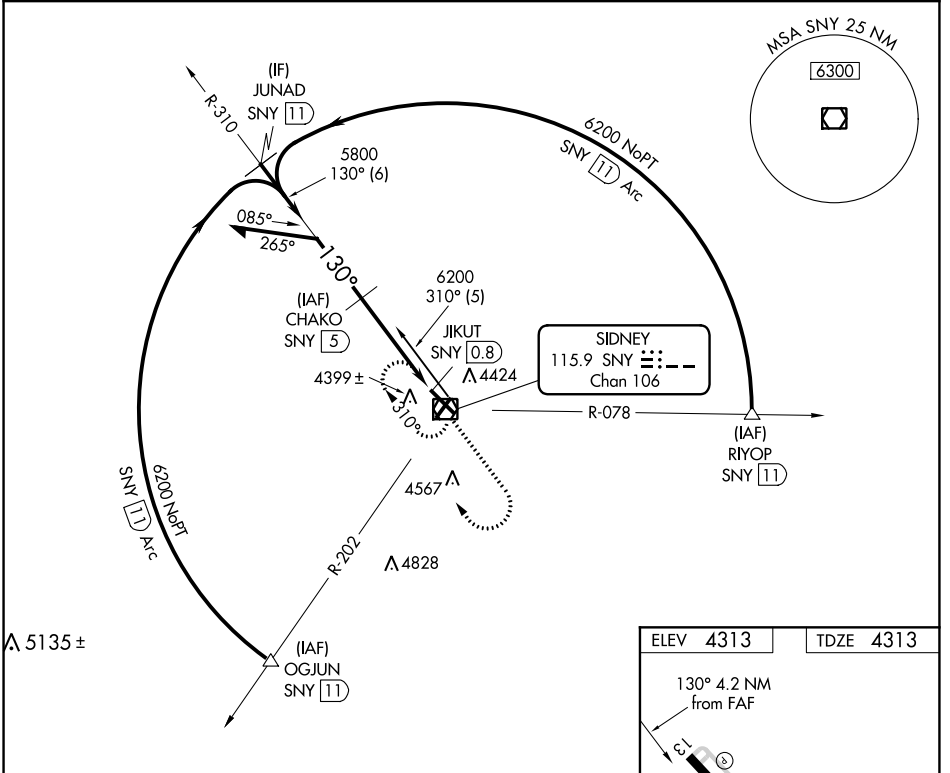
VOR/DME RWY 13

SIDNEY MUNI/LLOYD W CARR FIELD (SNY)

⚠ VDP NA when using Kimball altimeter setting. When local altimeter setting not received, use Kimball altimeter setting; increase all MDAs 160 feet and visibility Cats C and D ½ SM.

⚠ MISSED APPROACH: Climb to 6200 then right turn direct SNY VOR/DME and hold.

ASOS 125.775	DENVER CENTER 118.475 225.4	UNICOM 122.8 (CTAF) 0
------------------------	---------------------------------------	---------------------------------



CATEGORY	A	B	C	D
S-13	4700-1	387 (400-1)		4700-1¼ 387 (400-1¼)
CIRCLING	4760-1 447 (500-1)	4780-1 467 (500-1)	4920-1¾ 607 (700-1¾)	4960-2 647 (700-2)

REIL Rwys 13 and 31 0
HIRL Rwy 13-31 0

NC-2, 15 JUL 2021 to 12 AUG 2021

NC-2, 15 JUL 2021 to 12 AUG 2021

VOR/DME SNY 115.9 Chan 106	APP CRS 293°	Rwy Idg 6600 TDZE 4290 Apt Elev 4313
--	------------------------	---

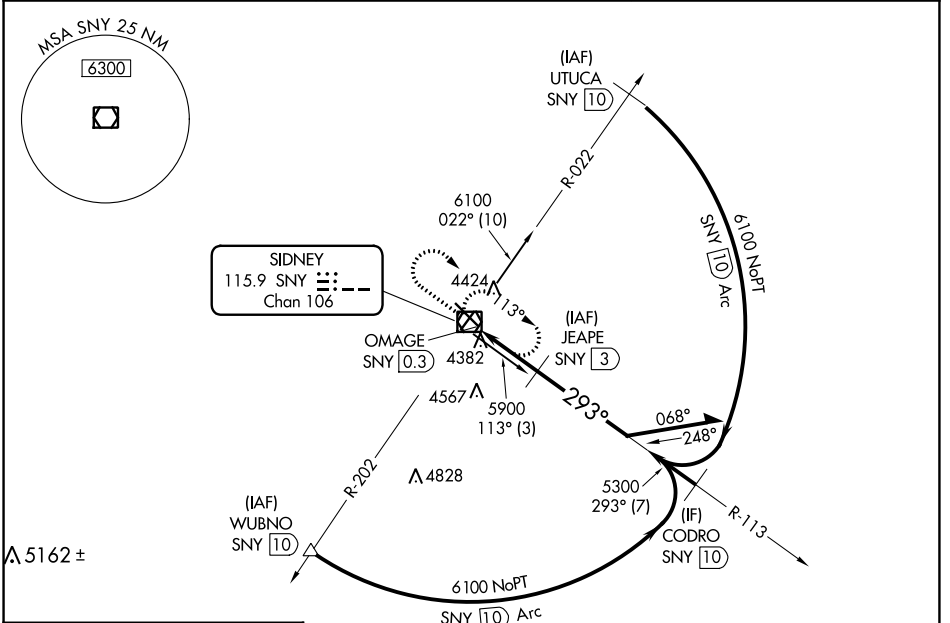
VOR/DME RWY 31

SIDNEY MUNI/LLOYD W CARR FIELD (SNY)

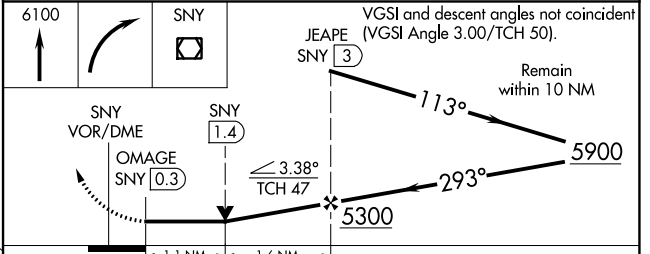
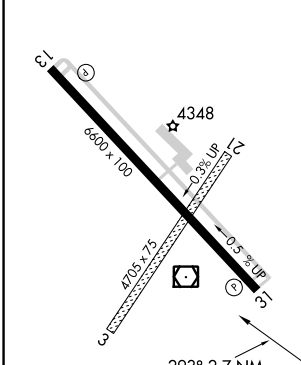
When local altimeter setting not received, use Kimball altimeter setting: increase all MDAs 160 feet and visibility Cats C and D ½ SM. VDP NA when using Kimball altimeter setting.

MISSED APPROACH: Climb to 6100 then right turn direct SNY VOR/DME and hold.

ASOS 125.775	DENVER CENTER 118.475 225.4	UNICOM 122.8 (CTAF) 0
------------------------	---------------------------------------	---------------------------------



ELEV 4313	TDZE 4290
-----------	-----------



CATEGORY	A	B	C	D
S-31	4680-1 390 (400-1)			4680-1¼ 390 (400-1¼)
CIRCLING	4760-1 447 (500-1)	4780-1 467 (500-1)	4920-1¾ 607 (700-1¾)	4960-2 647 (700-2)

NC-2, 15 JUL 2021 to 12 AUG 2021

NC-2, 15 JUL 2021 to 12 AUG 2021