

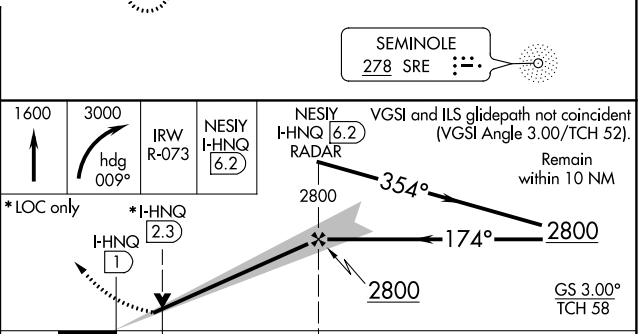
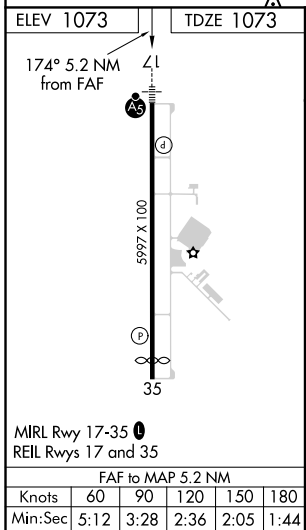
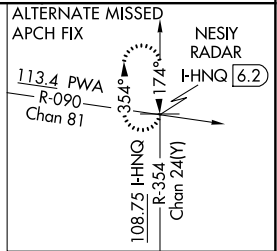
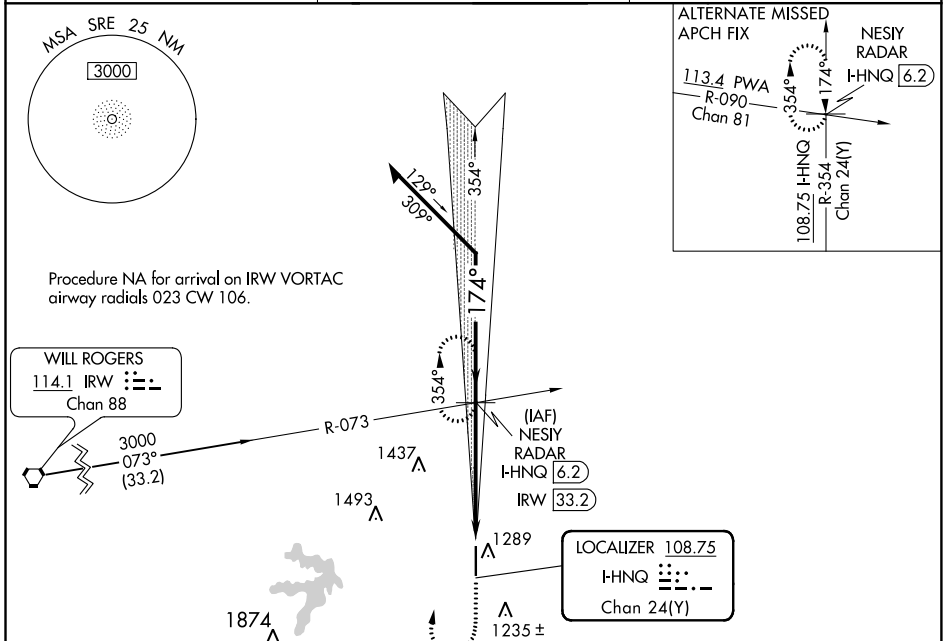
LOC/DME I-HNQ 108.75 Chan 24(Y)	APP CRS 174°	Rwy Idg TDZE 5997 1073 Apt Elev 1073
---	------------------------	--

ILS or LOC RWY 17

SHAWNEE RGNL (SNL)

DME or RADAR required.	MALSRR 	MISSED APPROACH: Climb to 1600 then climbing right turn to 3000 on heading 009° and IRW R-073 to NESIY/I-HNQ 6.2 DME/RADAR and hold, continue climb-in-hold to 3000.
------------------------	------------	--

AWOS-3 118.275	OKE CITY APP CON 120.45 288.325	UNICOM 122.7 (CTAF)
--------------------------	---	-------------------------------



CATEGORY	A	B	C	D
S-ILS 17	1273-1/2 200 (200-1/2)			NA
S-LOC 17	1520-1/2	447 (500-1/2)	1520-7/8 447 (500-7/8)	NA
<input checked="" type="checkbox"/> CIRCLING	1600-1	527 (600-1)	1640-1 1/2 567 (600-1 1/2)	NA

WAAS CH 86919 W17A	APP CRS 174°	Rwy Idg TDZE Apt Elev	5997 1073 1073
--	------------------------	-----------------------------	---

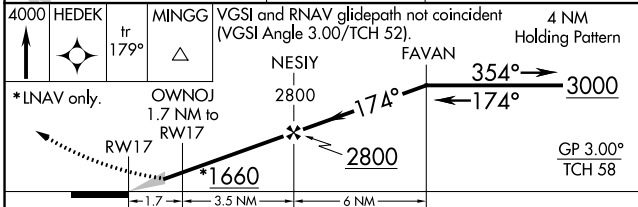
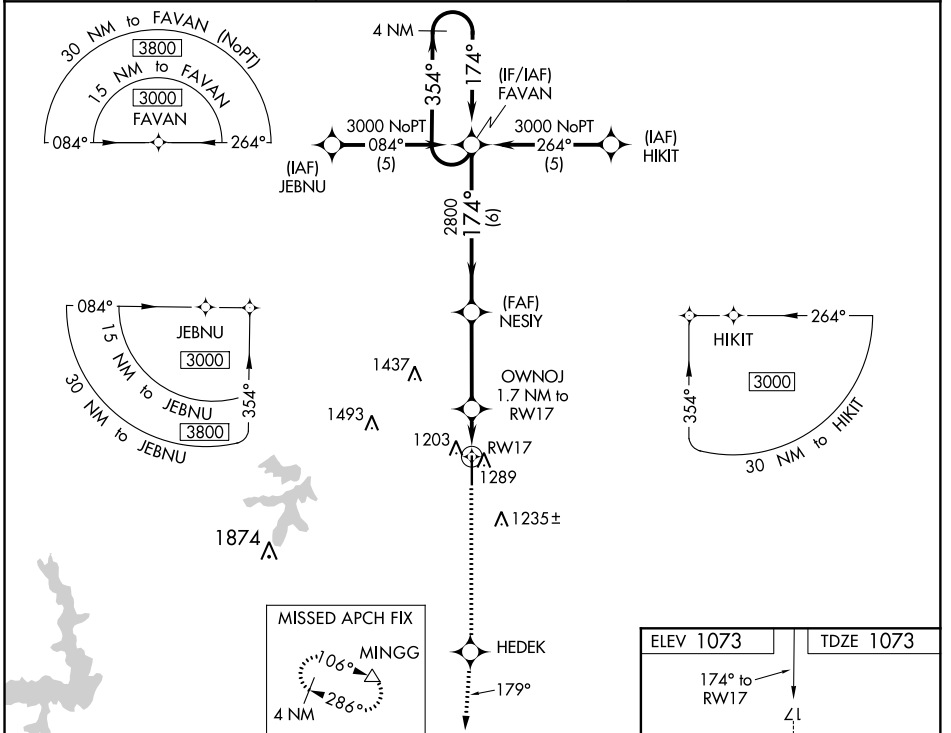
RNAV (GPS) RWY 17

SHAWNEE RGNL (SNL)

▼ Baro-VNAV NA when using Seminole altimeter setting. For uncompensated Baro-VNAV systems, LNAV/VNAV NA below -17°C (2°F) or above 54°C (130°F).
▲ DME/DME RNP-0.3 NA. When local altimeter setting not received, use Seminole altimeter setting: increase LPV DA to 1313 feet; increase LNAV/VNAV DA to 1487 feet and visibility ¼ SM; increase all MDAs 40 feet and visibility Cat C ¼ SM.

MALSR MISSED APPROACH: Climb to 4000 direct HEDEK and on track 179° to MINGG and hold.

AWOS-3 118.275	OKE CITY APP CON 120.45 288.325	UNICOM 122.7 (CTAF)
--------------------------	---	-------------------------------



ELEV 1073	TDZE 1073
-----------	-----------

The vertical profile shows the glidepath from 4000 feet at HEDEK down to 35 feet at RWY 17. A 4 NM holding pattern is shown at 35 feet. The glidepath is labeled with a 3.00° TCH 58. A MALSR is located at the runway end.

CATEGORY	A	B	C	D
LPV DA	1273-½	200 (200-½)		NA
LNAV/VNAV DA	1447-¾	374 (400-¾)		NA
LNAV MDA	1540-½	467 (500-½)	1540-¾ 467 (500-¾)	NA
C CIRCLING	1600-1	527 (600-1)	1640-1½ 567 (600-1½)	NA

SC-1, 30 DEC 2021 to 27 JAN 2022

SC-1, 30 DEC 2021 to 27 JAN 2022

WAAS CH 72818 W35A	APP CRS 354°	Rwy Idg TDZE Apt Elev	5593 1067 1073
--	------------------------	-----------------------------	---

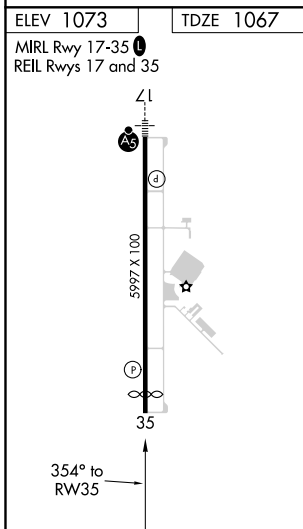
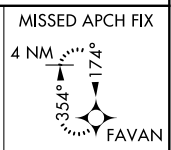
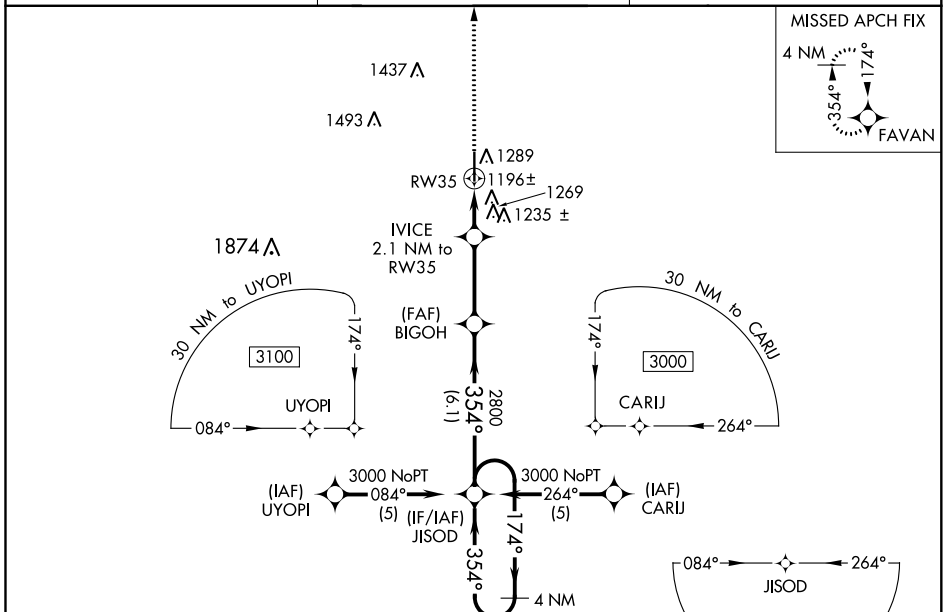
RNAV (GPS) RWY 35

SHAWNEE RGNL (SNL)

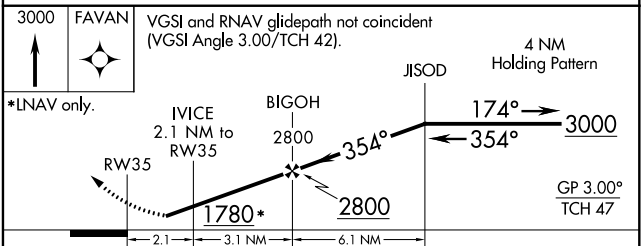
⚠ Baro-VNAV NA when using Seminole altimeter setting. For uncompensated Baro-VNAV systems, LNAV/VNAV NA below -17°C (2°F) or above 54°C (130°F). DME/DME RNP-0.3 NA. When local altimeter setting not received, use Seminole altimeter setting: increase LPV DA to 1357 feet; increase LNAV/VNAV DA to 1605 feet and visibility ¼ SM; increase all MDAs 40 feet and visibility Cat C ¼ SM.

⚠ MISSED APPROACH: Climb to 3000 direct FAVAN and hold.

AWOS-3 118.275	OKE CITY APP CON 120.45 288.325	UNICOM 122.7 (CTAF)
--------------------------	---	-------------------------------



ELEV 1073	TDZE 1067
MIRL Rwy 17-35	REIL Rwy 17 and 35



CATEGORY	A	B	C	D
LPV DA	1317-1	250 (300-1)		NA
LNAV/VNAV DA	1565-1¾	498 (500-1¾)		NA
LNAV MDA	1520-1	453 (500-1)	1520-1¼ 453 (500-1¼)	NA
C CIRCLING	1600-1	527 (600-1)	1640-1½ 567 (600-1½)	NA