

LOS ALAMITOS, CALIFORNIA

RNAV (GPS) RWY 22L

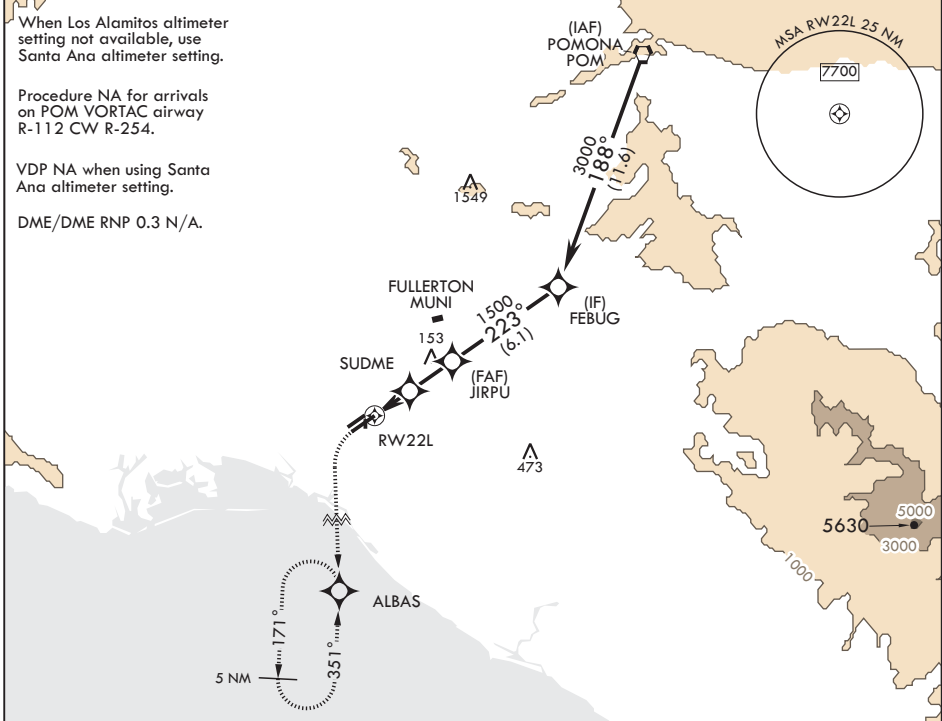
APCH CRS	Rwy Idg	8001
223°	TDZE	35
	Arprt Elev	35

AL-953 (USA)

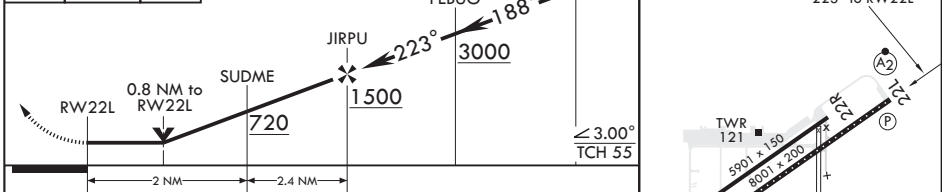
LOS ALAMITOS AAF (KSLI)

<p>* When ALS inop, increase CAT D vis to 1 mile. ** When ALS inop using SANTA ANA altimeter setting, increase CAT D vis to 1 1/8 mile. *** Circling not authorized N of Rwy 4L-22R.</p>	<p>SALS</p>	<p>MISSED APPROACH: Climb to 500 then climbing left turn to 2100 direct ALBAS and hold.</p>

<p>ATIS*</p> <p>118.875 379.975</p>	<p>SOCAL APP CON</p> <p>125.35 316.125</p>	<p>TOWER*</p> <p>123.85 (CTAF) 251.15</p>	<p>GND CON</p> <p>126.95 257.95</p>	<p>ASR/PAR</p>
-------------------------------------	--	---	-------------------------------------	----------------



 	<p>VGSI and descent angles not coincident.</p>	<p>ELEV 35</p>	<p>TDZE 35</p>
----------	--	----------------	----------------



CATEGORY	A	B	C	D
LNAV MDA*	380-3/4			
CIRCLING***	440-1 405 (500-1)	500-1 465 (500-1)	560-1 1/2 525 (600-1 1/2)	680-2 645 (700-2)
SANTA ANA ALTIMETER SETTING MINIMUMS				
LNAV MDA**	420-3/4	385 (400-3/4)	420-7/8	385 (400-7/8)
CIRCLING***	480-1 445 (500-1)	540-1 505 (600-1)	600-1 1/2 565 (600-1 1/2)	720-2 685 (700-2)

REIL Rwy 22L
 HIRL Rwy 4R-22L
 MIRL Rwy 4L-22R

LOS ALAMITOS, CALIFORNIA

33°47'N - 118°03'W

LOS ALAMITOS AAF (KSLI)

Amdt 1 07DEC17

RNAV (GPS) RWY 22L

SW-3, 30 DEC 2021 to 27 JAN 2022

SW-3, 30 DEC 2021 to 27 JAN 2022

VORTAC SII Chen 104	APCH CRS 214°	Rwy Idg TDZE Appt Elev	8001 35 35
------------------------	------------------	------------------------------	------------------

AL-933 (USA)

SALSF
A2

LOS ALAMITOS AAF (KSL)

▲ * When ALS inop, increase vis CAT D ½ mile
** Circling not authorized N of Rwy 4L-22R

MISSED APPROACH: Climb to 1800, then climbing left turn to 3000 via SII VORTAC R-058 to AHEIM INI and hold.

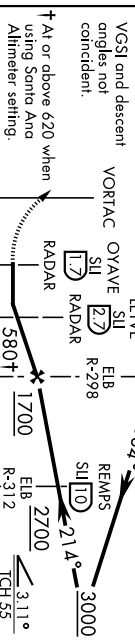
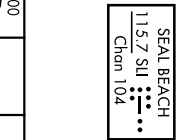
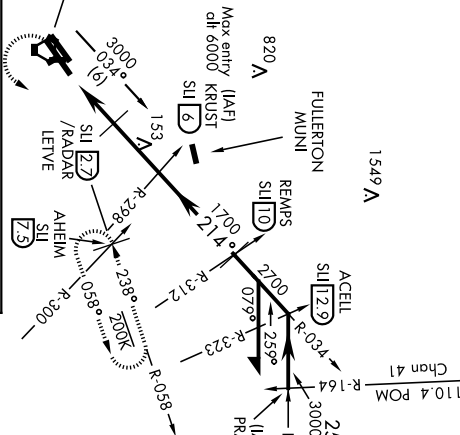
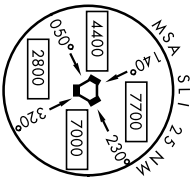
ATIS *	SOCAL APP CON	TOWER*	ASR/ PAR
118.875 379.975	125.35 316.125	123.85 251.15	126.95 257.95

GND CON

Chan 41
110 A POM

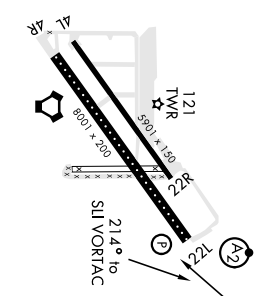
Procedure N/A for arrivals at PRADO via V16-370 Eastbound.
112.2 PRZ
Chan 59

When Los Alamitos altimeter setting not available, use Santa Ana altimeter setting.



ELEV	35	TDZE	35
------	----	------	----

CATEGORY	A	B	C	D
S-22L *	440-¾ 405 (500-¾)	440-1 405 (500-1)	440-1½ 405 (500-1½)	440-2 405 (500-2)
CIRCLING **	440-1 405 (500-1)	500-1 465 (500-1)	500-1½ 465 (500-1½)	600-2 565 (600-2)
S-22L	580-¾ 545 (600-¾)	580-1 545 (600-1)	580-1½ 545 (600-1½)	580-2 545 (600-2)
CIRCLING **	580-1 545 (600-1)	580-1½ 545 (600-1½)	600-2 565 (600-2)	600-2 565 (600-2)



CATEGORY	A	B	C	D
S-22L *	480-¾ 445 (500-¾)	480-1 445 (500-1)	480-1½ 445 (500-1½)	480-2 445 (500-2)
CIRCLING **	480-1 445 (500-1)	540-1 505 (600-1)	540-1½ 505 (600-1½)	640-2 605 (700-2)
S-22L	620-¾ 585 (600-¾)	620-1 585 (600-1)	620-1½ 585 (600-1½)	620-2 585 (600-2)
CIRCLING **	620-1 585 (600-1)	620-1½ 585 (600-1½)	640-2 605 (700-2)	640-2 605 (700-2)

HIRL Rwy 48-22L	600 x 200
MRL Rwy 4L-22R	500 x 150
KELL Rwy 22L	600 x 100
FAF to MAP 4.3 NM	214° to SII VORTAC

S-22L	620-¾ 585 (600-¾)	620-1 585 (600-1)	620-1½ 585 (600-1½)	620-2 585 (600-2)
CIRCLING **	620-1 585 (600-1)	620-1½ 585 (600-1½)	640-2 605 (700-2)	640-2 605 (700-2)

Knots	60	90	120	150	180
Mins./Sec	4:18	2:52	2:09	1:43	1:26