

WAAS CH 90208 W18A	APP CRS 181°	Rwy ldg 4997 TDZE 1191 Apt Elev 1191
--	------------------------	---

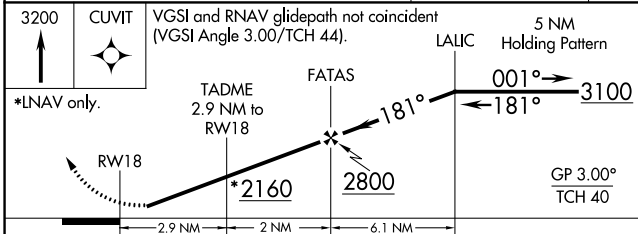
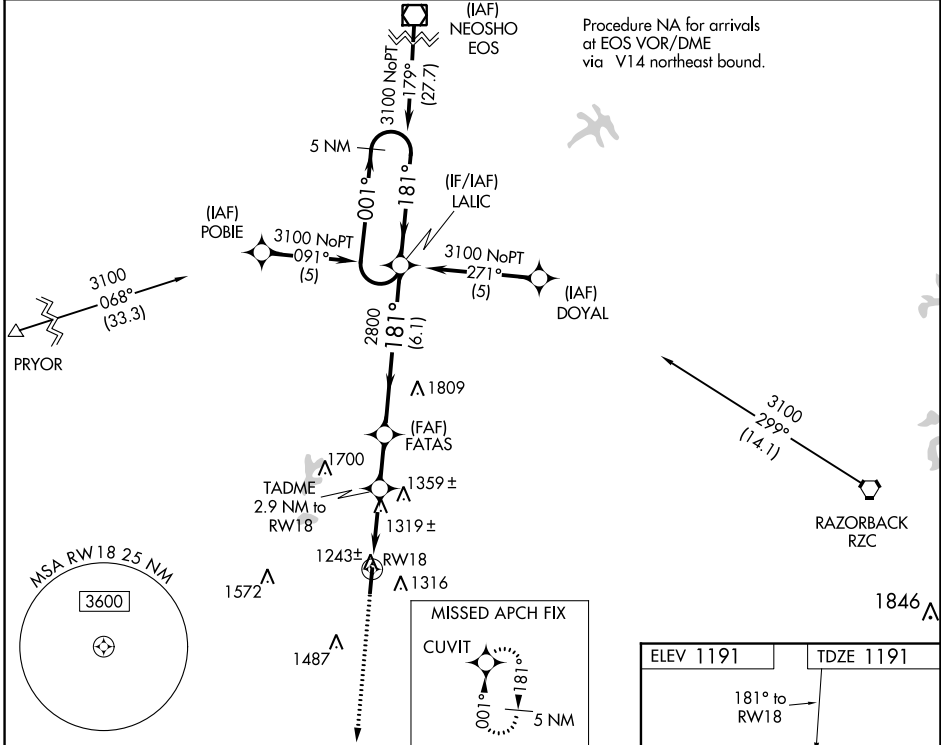
RNAV (GPS) RWY 18

SMITH FLD (SLG)

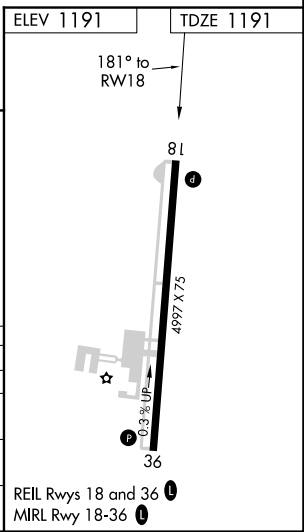
⚠ Baro-VNAV NA when using Northwest Arkansas Nil altimeter setting. For uncompensated Baro-VNAV systems, LNAV/VNAV NA below -17°C (2°F) or above 46°C (114°F). DME/DME RNP-0.3 NA. Visibility reduction by helicopters NA. When local altimeter setting not received, use Northwest Arkansas Nil altimeter setting, and increase all DA/MDA 40 feet, and increase LPV visibility ¼ mile all Cats, LNAV/VNAV visibility ½ mile all Cats, and LNAV visibility Cat C and D ¼ mile.

MISSED APPROACH:
Climb to 3200 direct CUVIT and hold.

AWOS-3PT 118.375	RAZORBACK APP CON * 121.0 244.575	UNICOM 122.8 (CTAF) ①
----------------------------	---	---------------------------------



CATEGORY	A	B	C	D
LPV DA		1479-1	288 (300-1)	
LNAV/VNAV DA		1623-1½	432 (500-1½)	
LNAV MDA	1580-1	389 (400-1)		1580-1¼ 389 (400-1¼)
CIRCLING	1620-1 429 (500-1)	1720-1 529 (600-1)	1720-1½ 529 (600-1½)	1760-2 569 (600-2)



SC-1, 17 JUN 2021 to 15 JUL 2021

SC-1, 17 JUN 2021 to 15 JUL 2021

WAAS CH 63105 W36A	APP CRS 001°	Rwy Idg TDZE 1181 Apt Elev 1191
--	------------------------	---

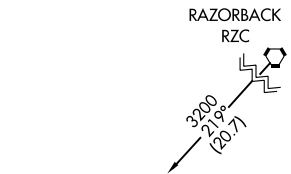
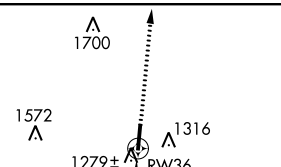
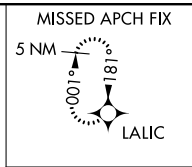
RNAV (GPS) RWY 36

SMITH FLD (SLG)

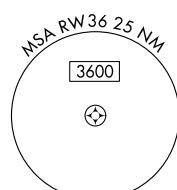
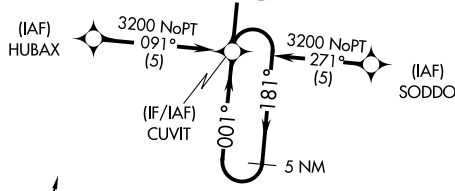
⚠ If local altimeter setting not received, use Northwest Arkansas MSL altimeter setting and increase all DAs/MDAs 40 feet. For uncompensated Baro-VNAV systems, LNAV/VNAV NA below -17°C (2°F) or above 46°C (114°F). DME/DME RNP-0.3 NA. Visibility reduction by helicopters NA. Baro-VNAV and VDP NA when using Northwest Arkansas MSL altimeter setting.

MISSED APPROACH:
Climb to 3100 direct LALIC and hold.

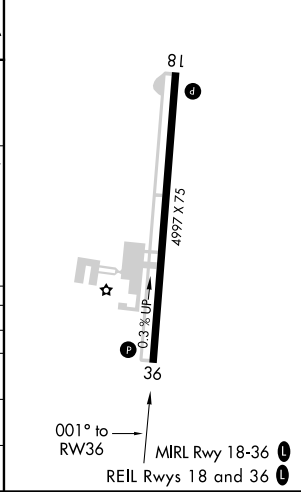
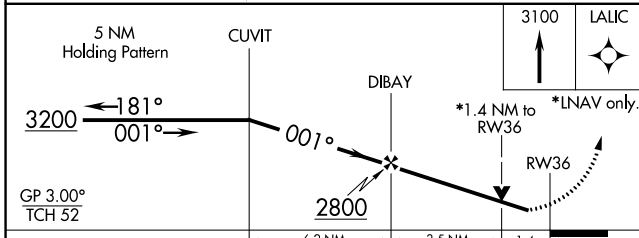
AWOS-3PT 118.375	RAZORBACK APP CON ★ 121.0 244.575	UNICOM 122.8 (CTAF) ①
----------------------------	---	--



Procedure NA for arrivals at RZC VORTAC airway radials 186 CW 264.



ELEV 1191	TDZE 1181
-----------	-----------



CATEGORY	A	B	C	D
LPV DA		1431-1	250 (300-1)	
LNAV/VNAV DA		1549-1¼	368 (400-1¼)	
LNAV MDA	1660-1	479 (500-1)	1660-1¼ 479 (500-1¼)	1660-1½ 479 (500-1½)
CIRCLING	1660-1 469 (500-1)	1720-1 529 (600-1)	1720-1½ 529 (600-1½)	1760-2 569 (600-2)

SC-1, 17 JUN 2021 to 15 JUL 2021

SC-1, 17 JUN 2021 to 15 JUL 2021