

DANEI THREE ARRIVAL
(APE.DANEI3) 10OCT19

(APE.DANEI3) 20198
DANEI THREE ARRIVAL

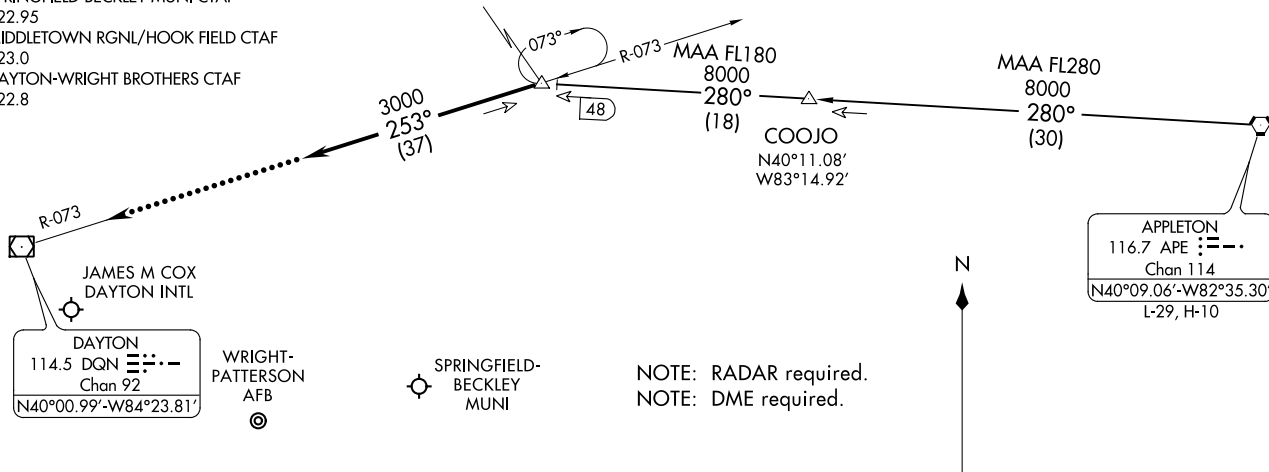
A1-107 (FAA)

DAYTON, OHIO

COLUMBUS APP CON
118.425 323.15
DAY ATIS
125.8
KFFO ATIS
124.475 269.9
SPRINGFIELD-BECKLEY MUNI CTAF
122.95
MIDDLETOWN RGNL/HOOK FIELD CTAF
123.0
DAYTON-WRIGHT BROTHERS CTAF
122.8

DANEI
N40°12.16'-W83°38.36'
VERTICAL NAVIGATION PLANNING

Expect 11000 250K



DAYTON
114.5 DQN
Chan 92
N40°00.99'-W84°23.81'

WRIGHT-PATTERSON
AFB

SPRINGFIELD-BECKLEY
MUNI

NOTE: RADAR required.
NOTE: DME required.

APPLETON
116.7 APE
Chan 114
N40°09.06'-W82°35.30'
L-29, H-10

APPLETON TRANSITION (APE.DANEI3): From over APE VORTAC on APE R-280 to DANEI. Thence....

....From over DANEI on heading 253°. Expect RADAR vectors to final approach course.

LOST COMMUNICATIONS:

In the event of lost communications: At DANEI, proceed direct DQN VOR/DME maintain 3000' until DQN VOR/DME.

NOTE: Chart not to scale.

DAYTON, OHIO

(FLM.KEKEE4) 20198

KEKEE FOUR ARRIVAL

AL-107 (FAA)

DAYTON, OHIO

COLUMBUS APP CON
 118.425 323.15
 DAY ATIS
 125.8
 KFFO ATIS
 124.475 269.9
 SPRINGFIELD-BECKLEY MUNI CTAF
 122.95

DAYTON
 114.5 DQN
 Chan 92

JAMES M COX
 DAYTON INTL

SPRINGFIELD-BECKLEY
 MUNI

WRIGHT-PATTERSON
 AFB

KEKEE
 N39°32.29'
 W84°17.35'

BRYNN
 N39°12.19'
 W84°33.35'

CINCINNATI
 117.3 CVG
 Chan 120

LODLL
 N38°48.43'-W84°22.80'
VERTICAL PLANNING INFORMATION
 Expect 14000

FALMOUTH
 117.0 FLM
 Chan 117
 N38°38.97'-W84°18.64'
 L-26-27, H-10

NOTE: DME or RADAR required.
 NOTE: Chart not to scale.

FALMOUTH TRANSITION (FLM.KEKEE4): From over FLM VOR/DME on FLM R-345 to BRYNN, then on CVG R-036 to KEKEE. Thence....

....from over KEKEE: Expect RADAR vectors to join final approach course.

KEKEE FOUR ARRIVAL

(FLM.KEKEE4) 10OCT19

DAYTON, OHIO

EC-2, 20 MAY 2021 to 17 JUN 2021

EC-2, 20 MAY 2021 to 17 JUN 2021