


NDB CCJ 341	APP CRS 240°	Rwy Idg TDZE Apt Elev	9009 1048 1051
-----------------------	------------------------	-----------------------------	---

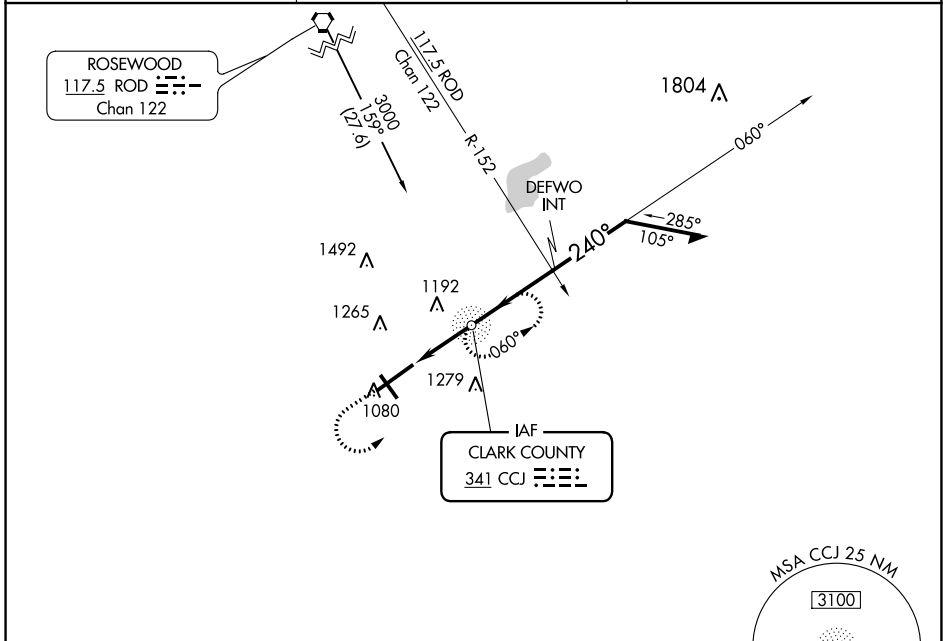
NDB RWY 24

SPRINGFIELD-BECKLEY MUNI (SGH)

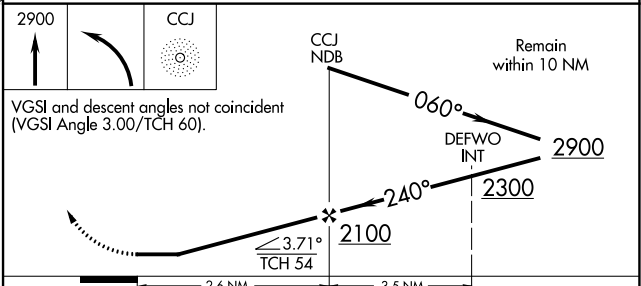
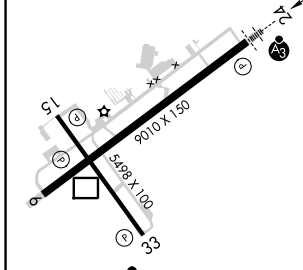
NA When local altimeter setting not received, use Wright-Patterson AFB altimeter setting and increase all MDA 60 feet and S-24 Cats C and D visibility ¼ mile.

SSALR  MISSED APPROACH: Climb to 2900 then left turn direct CCJ NDB and hold.

AWOS-3PT 134.975	COLUMBUS APP CON 118.85 269.275	UNICOM 122.95 (CTAF) 1
----------------------------	---	----------------------------------



ELEV 1051	D TDZE 1048
240° 2.6 NM from FAF	



	A	B	C	D
S-24	1500-¾ 452 (500-¾)			1500-1¼ 452 (500-1¼)
CIRCLING	1500-1 449 (500-1)	1520-1 469 (500-1)	1520-1½ 469 (500-1½)	1620-2 569 (600-2)

EC-2, 20 MAY 2021 to 17 JUN 2021

EC-2, 20 MAY 2021 to 17 JUN 2021

WAAS CH 97615 W24A	APP CRS 238°	Rwy Idg TDZE Apt Elev	9009 1048 1051
--	------------------------	-----------------------------	---

RNAV (GPS) RWY 24

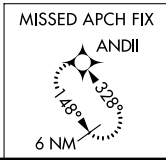
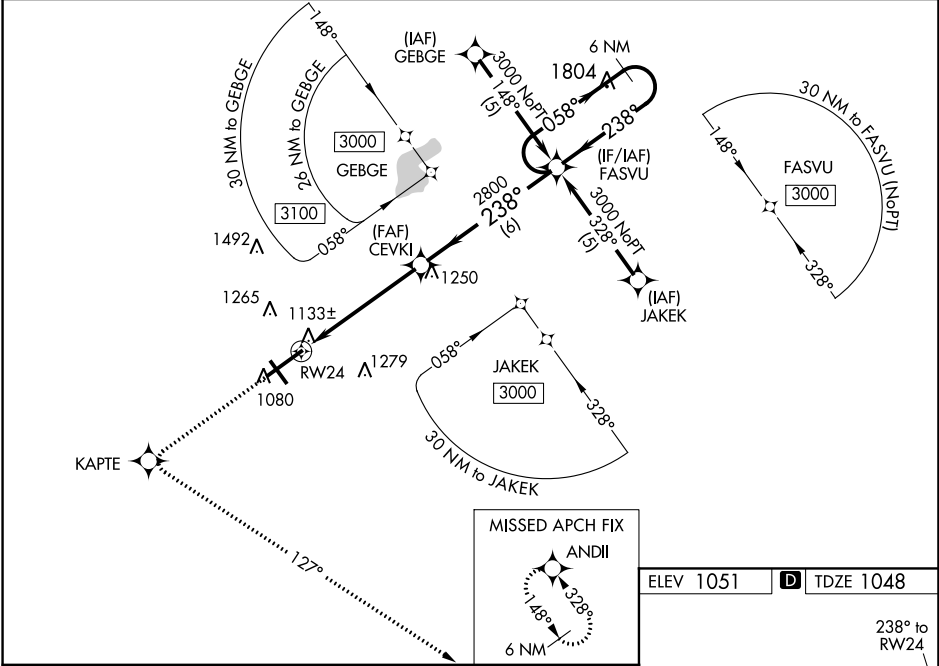
SPRINGFIELD-BECKLEY MUNI (SGH)

▼ For uncompensated Baro-VNAV systems, LNAV/VNAV NA below -17°C (2°F) or above 47°C (116°F). DME/DME RNP-0.3 NA. When local altimeter setting not received, use Wright-Patterson AFB altimeter setting and increase all DA 55 feet and all MDA 60 feet, LNAV/VNAV all Cats and LNAV Cat C visibilities ¼ mile. For inoperative ALSF-2/SSALR, increase LNAV Cat D visibility to 1¼ mile. For inoperative ALSF-2/SSALR, when using Wright-Patterson AFB altimeter setting, increase LPV all Cats visibility to 1 mile and LNAV Cat D visibility to 1¼ mile. ALSF-2 reverts to SSALR when tower is closed. VDP and Baro-VNAV NA when using Wright-Patterson AFB altimeter setting.

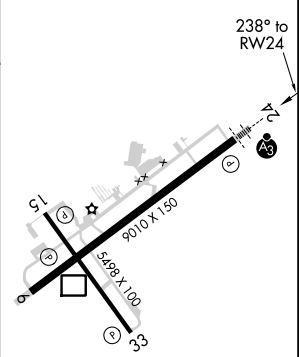
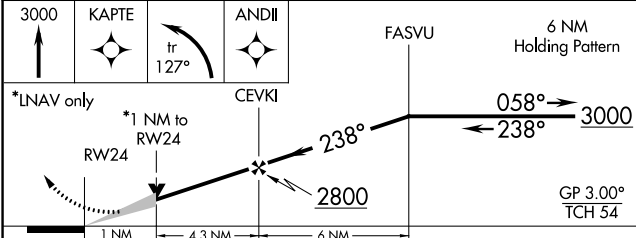


MISSED APPROACH:
Climb to 3000 direct KAPTE and left turn via track 127° to ANDII and hold.

AWOS-3PT 134.975	COLUMBUS APP CON 118.85 269.275	UNICOM 122.95 (CTAF) 0
----------------------------	---	----------------------------------



ELEV 1051	D TDZE 1048
-----------	--------------------



CATEGORY	A	B	C	D
LPV DA		1248-½	200 (200-½)	
LNAV/VNAV DA		1398-¾	350 (400-¾)	
LNAV MDA	1400-½	352 (400-½)		1400-1 352 (400-1)
CIRCLING	1480-1 429 (500-1)	1520-1 469 (500-1)	1520-1½ 469 (500-1½)	1620-2 569 (600-2)

HIRL Rwy 6-24
MIRL Rwy 15-33
REIL Rwy 6, 15 and 33

EC-2, 20 MAY 2021 to 17 JUN 2021

EC-2, 20 MAY 2021 to 17 JUN 2021

WAAS CH 58115 W06A	APP CRS 058°	Rwy Idg 9009 TDZE 1051 Apt Elev 1051
--	------------------------	---

RNAV (GPS) RWY 6

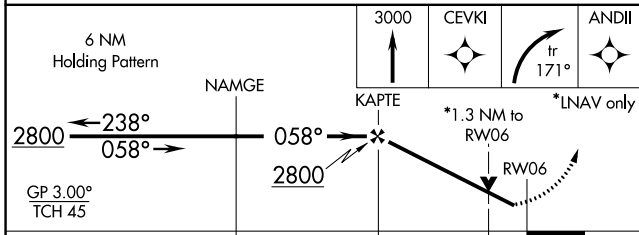
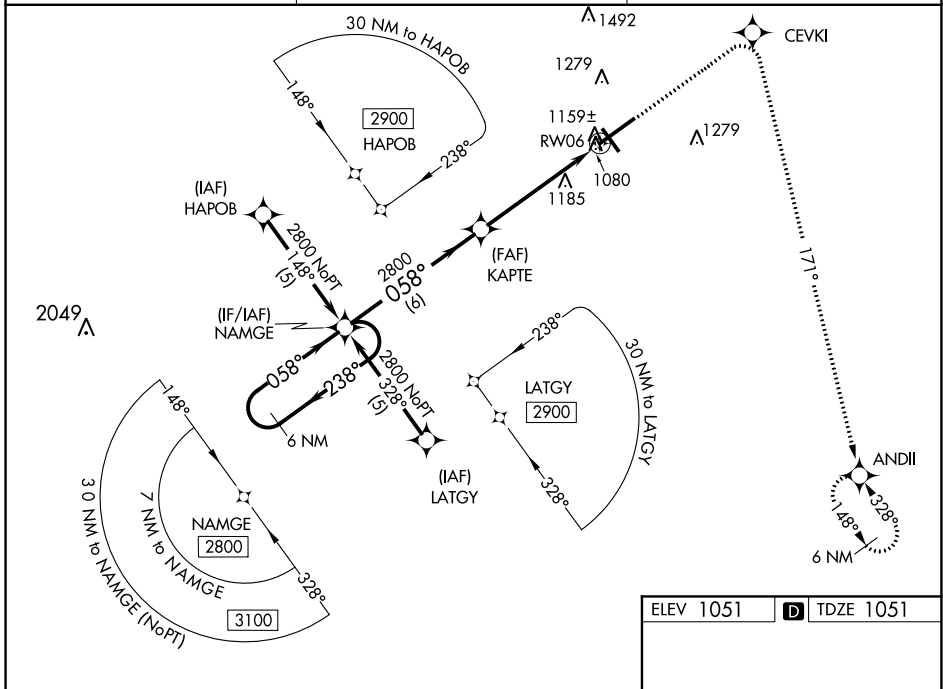
SPRINGFIELD-BECKLEY MUNI (SGH)

⚠ For uncompensated Baro-VNAV systems, LNAV/VNAV NA below -17°C (2°F) or above 46°C (114°F). DME/DME RNP-0.3 NA. Visibility reduction by helicopters NA.

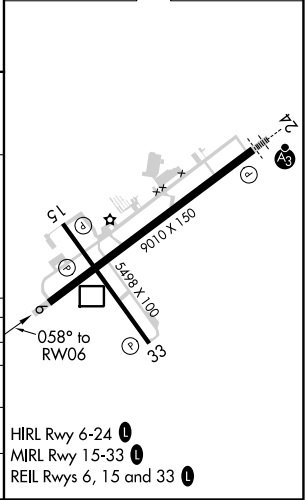
⚠ When local altimeter setting not received, use Wright-Patterson AFB altimeter setting and increase all DA 55 feet and all MDA 60 feet, and increase LPV all Cats, LNAV/VNAV all Cats, and LNAV Cat C visibilities ¼ mile. VDP and Baro-VNAV NA when using Wright-Patterson AFB altimeter setting.

MISSED APPROACH: Climb to 3000 direct CEVKI and right turn via track 171° to ANDII and hold.

AWOS-3PT 134.975	COLUMBUS APP CON 118.85 269.275	UNICOM 122.95 (CTAF) 1
----------------------------	---	----------------------------------



ELEV 1051	D TDZE 1051
-----------	--------------------



CATEGORY	A	B	C	D
LPV DA	1354-1 303 (400-1)			
LNAV/VNAV DA	1429-1½ 378 (400-1½)			
LNAV MDA	1500-1	449 (500-1)	1500-1¼ 449 (500-1¼)	1500-1½ 449 (500-1½)
CIRCLING	1500-1 449 (500-1)	1520-1 469 (500-1)	1520-1½ 469 (500-1½)	1620-2 569 (600-2)

EC-2, 20 MAY 2021 to 17 JUN 2021

EC-2, 20 MAY 2021 to 17 JUN 2021