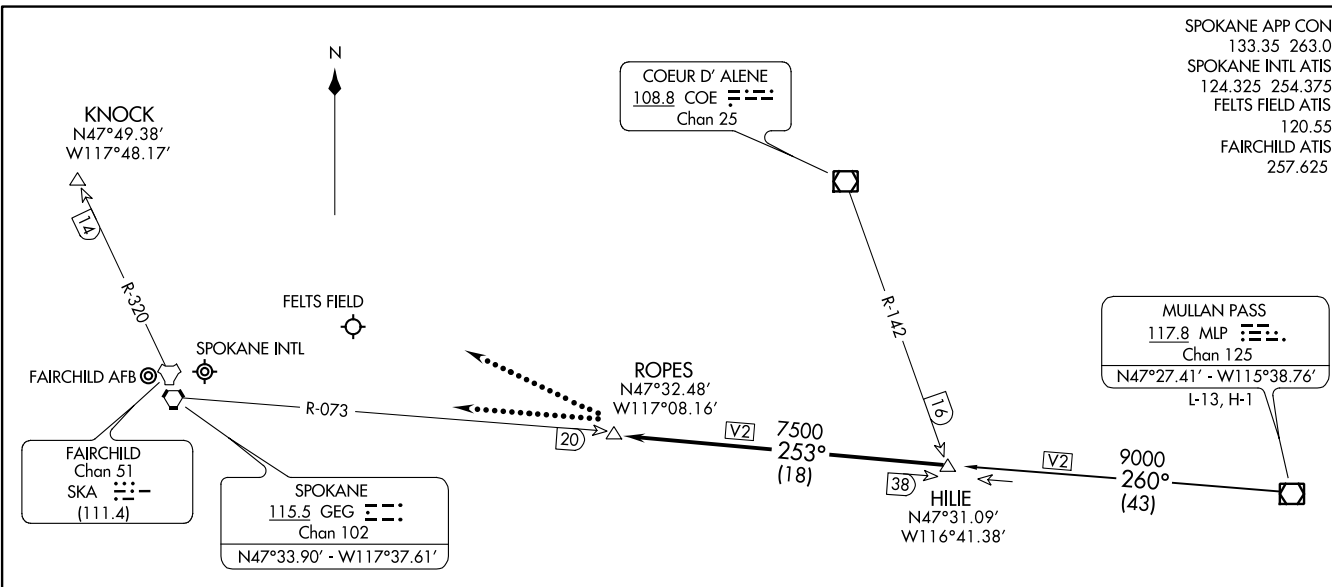


HILIE TWO ARRIVAL (HILIE.HILIE2)
13JAN11

HILIE TWO ARRIVAL (HILIE.HILIE2)
16147

SPOKANE APP CON
133.35 263.0
SPOKANE INTL ATIS
124.325 254.375
FELTS FIELD ATIS
120.55
FAIRCHILD ATIS
257.625



ARRIVAL ROUTE DESCRIPTION

MULLAN PASS TRANSITION (MLP.HILIE2): From over MLP VOR/DME via MLP R-260 to HILIE INT. Thence. . . .

. . . .From over HILIE INT via GEG R-073 to ROPES. Expect radar vectors to final approach course.

LOST COMMUNICATIONS: After ROPES:

Landing Spokane Intl or Felts Field: Proceed to GEG VORTAC via GEG R-073, maintain last assigned altitude to GEG.

Landing Fairchild AFB: Proceed to KNOCK via direct, maintain last assigned altitude to KNOCK.

NOTE: DME and RADAR required.

NOTE: Chart not to scale.

ST-403 (FAA)

SPOKANE, WASHINGTON

SPOKANE, WASHINGTON

22MARR01

ZOOMR ONE ARRIVAL (ZOOMR.ZOOMR1)

SPOKANE APP CON
123.75 282.25
SPOKANE INTL ATIS
124.325 254.375
FELTS FIELD ATIS
120.55
FAIRCHILD ATIS
257.625

EPHRATA
112.6 EPH :---
Chan 73
N47° 22.68' - W119° 25.44'
L-13, H-1

YAKIMA
116.0 YKM :---
Chan 107

MOSES LAKE
115.0 MWH :---
Chan 97
N47° 12.65' - W119° 19.01'
L-13, H-1

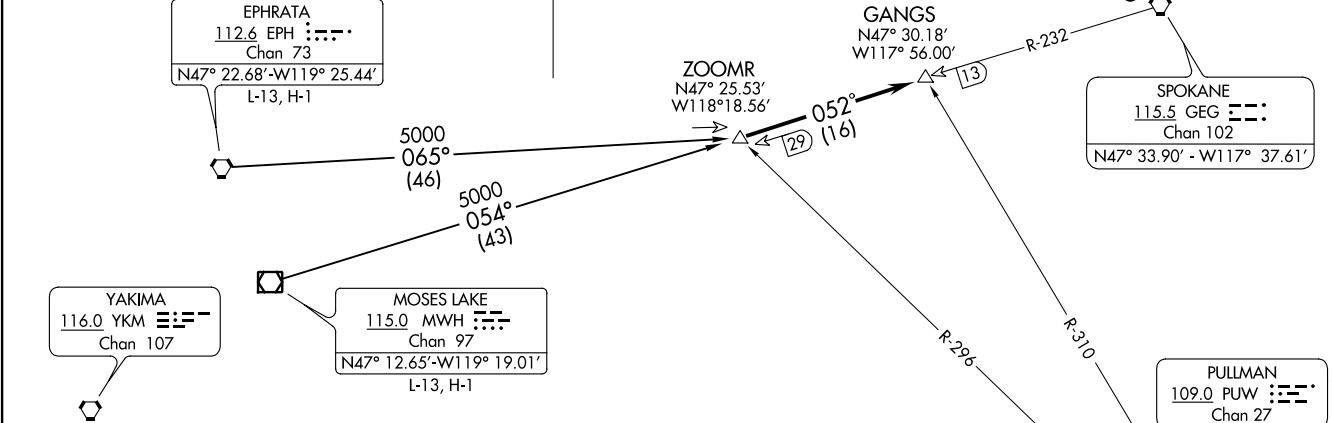
ZOOMR
N47° 25.53' - W118° 18.56'

GANGS
N47° 30.18' - W117° 56.00'

FAIRCHILD
Chan 51
SKA :---
(111.4)

SPOKANE
115.5 GEG :---
Chan 102
N47° 33.90' - W117° 37.61'

PULLMAN
109.0 PUW :---
Chan 27



ARRIVAL ROUTE DESCRIPTION

EPHRATA TRANSITION (EPH.ZOOMR1): From over EPH VORTAC via EPH R-065 to ZOOMR INT. Thence. . . .
MOSES LAKE TRANSITION (MWH.ZOOMR1): From over MWH VOR/DME via MWH R-054 to ZOOMR INT. Thence. . . .
 From over ZOOMR INT via GEG R-232 to GANGS INT. Expect RADAR vectors to final approach course.
LOST COMMUNICATIONS: After GANGS INT:
Landing Spokane Intl or Felts Field: Proceed to GEG VORTAC via GEG R-232, maintain last assigned altitude to GEG.
Landing Fairchild AFB: Proceed to KNOCK DME via direct, maintain last assigned altitude to KNOCK.

NOTE: DME and RADAR required.
NOTE: Chart not to scale.

SPOKANE, WASHINGTON

SPOKANE, WASHINGTON

ZOOMR ONE ARRIVAL (ZOOMR.ZOOMR1)

16147

ST-403 (FAA)