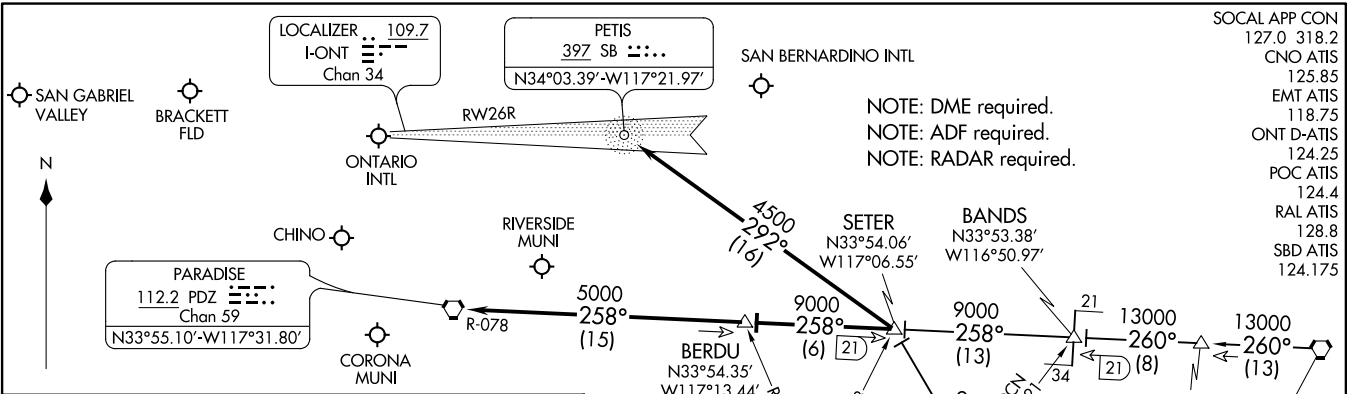


SETER FIVE ARRIVAL  
(SETER:SETER5) 17AUG17

(SETER:SETER5) 21112  
SETER FIVE ARRIVAL



SOCAL APP CON	127.0	318.2
CNO ATIS	125.85	
EMT ATIS	118.75	
ONT D-ATIS	124.25	
POC ATIS	124.4	
RAL ATIS	128.8	
SBD ATIS	124.175	

### ARRIVAL ROUTE DESCRIPTION

**JULIAN TRANSITION (JLI:SETER5):** From over JLI VORTAC on JLI R-315 to SETER. Thence. . . .

**PALM SPRINGS TRANSITION (PSP:SETER5):** From over PSP VORTAC on PSP R-260 to BANDS, then on PDZ R-078 to SETER. Thence. . . .

### LANDING ONTARIO INTL

**RUNWAYS 26L/R:** From over SETER on SB NDB 292° course to SB NDB; expect ILS approach.

**RUNWAYS 8L/R:** From over SETER on PDZ R-078 to BERDU, then on PDZ R-078 to PDZ VORTAC; expect vectors to final approach course.

### ALL OTHER AIRPORTS

From over SETER via PDZ R-078 to BERDU, then on PDZ R-078 to PDZ VORTAC; expect vectors to final approach course.

**HOMELAND**  
113.4 HDF

**ROTHY**  
N33°35.59'-W116°53.76'  
**VERTICAL NAVIGATION**  
**PLANNING INFORMATION**  
Expect 12000

**OCEANSIDE**  
115.3 OCN  
Chan 100

**JULIAN**  
114.0 JLI  
Chan 87  
N33°08.43'-W116°35.16'  
L-4, H-4  
**VERTICAL NAVIGATION**  
**PLANNING INFORMATION**  
Expect FL240

**PALM SPRINGS**  
115.5 PSP  
Chan 102  
N33°52.20'-W116°25.79'  
L-4, H-4  
**VERTICAL NAVIGATION**  
**PLANNING INFORMATION**  
Expect 16000

NOTE: Chart not to scale.

AL-965 (FAA)

ONTARIO, CALIFORNIA

ONTARIO, CALIFORNIA



ARRIVAL ROUTE DESCRIPTION

HECTOR TRANSITION (HEC.ZIGGY7): From over HEC VORTAC on HEC R-211 and PDZ R-030 to ZIGGY. Thence . . . .

PALMDALE TRANSITION (PMD.ZIGGY7): From over PMD VORTAC on PMD R-104 to HITOP, then on HDF R-332 to ZIGGY. Thence . . . .

SHAFTER TRANSITION (EHF.ZIGGY7): From over EHF VORTAC on EHF R-128 and PMD R-295 to PMD VORTAC, then on PMD R-104 to HITOP, then on HDF R-332 to ZIGGY. Thence . . . .

TULE TRANSITION (TTE.ZIGGY7): From over TTE VOR/DME on TTE R-147 and PMD R-295 to PMD VORTAC, then on PMD R-104 to HITOP, then on HDF R-332 to ZIGGY. Thence . . . .

LANDING ONTARIO INTL

RUNWAYS 8L/R: From over ZIGGY on PDZ R-030 to PDZ VORTAC; expect RADAR vectors to final approach course.

RUNWAYS 26 L/R: From over ZIGGY direct PETIS NDB or on PDZ R-030 to PETIS; expect RADAR vectors for ILS approach.

ALL OTHER AIRPORTS

From over ZIGGY on PDZ R-030 to PDZ VORTAC; expect RADAR vectors to final approach course.

SW-3, 20 MAY 2021 to 17 JUN 2021

SW-3, 20 MAY 2021 to 17 JUN 2021