

POAKE TWO DEPARTURE

AL-548 (FAA)

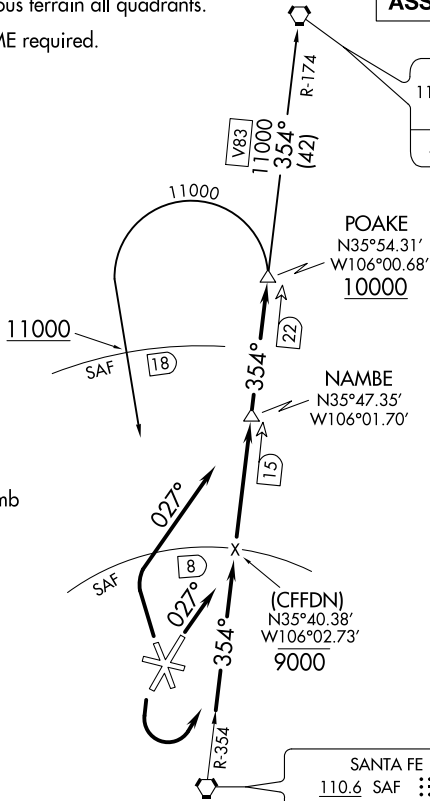
SANTA FE MUNI (SAF)
SANTA FE, NEW MEXICO

ATIS 128.55
GND CON
121.7
SANTA FE TOWER*
119.5 (CTAF) 239.3
ALBUQUERQUE CENTER
132.8 346.35

CAUTION:
Mountainous terrain all quadrants.
NOTE: DME required.

**TOP ALTITUDE:
ASSIGNED by ATC**

TAOS
117.6 TAS : : :
Chan 123
N36°36.53'
W105°54.38'
L-8



TAKEOFF MINIMUMS:
Rwy 2: Standard with minimum climb
of 220' per NM to 7300.
Rwy 20, 30: Standard.

NOTE: Chart not to scale.

DEPARTURE ROUTE DESCRIPTION

- TAKEOFF RUNWAY 2:** Climb heading 027° thence. . . .
- TAKEOFF RUNWAY 20:** Climbing left turn thence. . . .
- TAKEOFF RUNWAY 33:** Climbing right turn to heading 027° thence. . . .
- . . . Intercept and proceed on SAF R-354 to POAKE DME fix. Cross 8 DME ARC north of SAF VORTAC at or below 9000. Cross POAKE DME fix at or above 10000. Then on (transition) or (assigned route).
- SANTA FE TRANSITION (POAKE2.SAF):** From POAKE DME fix left turn direct SAF VORTAC. Cross 18 DME north of SAF VORTAC at/above 11000'.
- TAOS TRANSITION (POAKE2.TAS):** From POAKE DME fix via SAF R-354 and TAS R-174 to TAS VORTAC.

POAKE TWO DEPARTURE

SW-1, 27 JAN 2022 to 24 FEB 2022

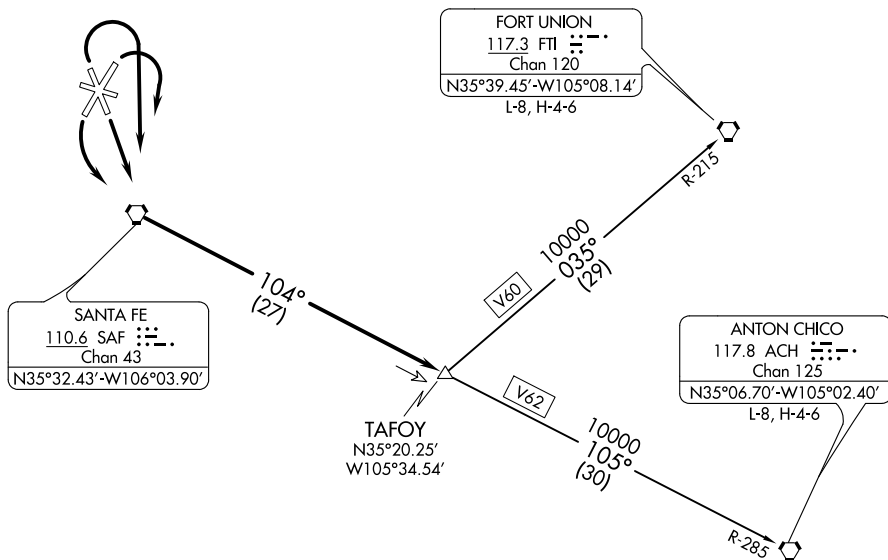
SW-1, 27 JAN 2022 to 24 FEB 2022

TAFOY TWO DEPARTURE

SL-548 (FAA)

SANTA FE MUNI (SAF)
SANTA FE, NEW MEXICO

ATIS 128.55
GND CON
121.7
SANTA FE TOWER*
119.5 (CTAF) 239.3
ALBUQUERQUE CENTER
132.8 346.35



CAUTION: Mountainous terrain all quadrants.

NOTE: Takeoff runways 2, 33: Cat. A, B standard;
Cat. C, D requires a minimum climb of 330'/NM until
passing 9800' or a 2900' ceiling and 3 miles visibility.

NOTE: Chart not to scale.



DEPARTURE ROUTE DESCRIPTION

TAKEOFF RUNWAY 15: Climb direct to....

TAKEOFF RUNWAY 20: Climbing left turn direct to....

TAKEOFF RUNWAYS 2 & 33: Climbing right turn direct to....

....the SAF VORTAC. Proceed via the SAF R-104 to TAFOY INT, climb and maintain 10000 MSL. Thence via assigned (transition) or (route).

ANTON CHICO TRANSITION (TAFOY2.ACH): From over TAFOY INT, via V62/ACH R-285 to ACH VORTAC. Thence via (assigned) route.

FORT UNION TRANSITION (TAFOY2.FTI): From over TAFOY INT via V60/FTI R-215 to FTI VORTAC. Thence via (assigned) route.

TAFOY TWO DEPARTURE

ZIAS4 FOUR DEPARTURE

AL-548 (FAA)

SANTA FE MUNI (SAF)
SANTA FE, NEW MEXICO

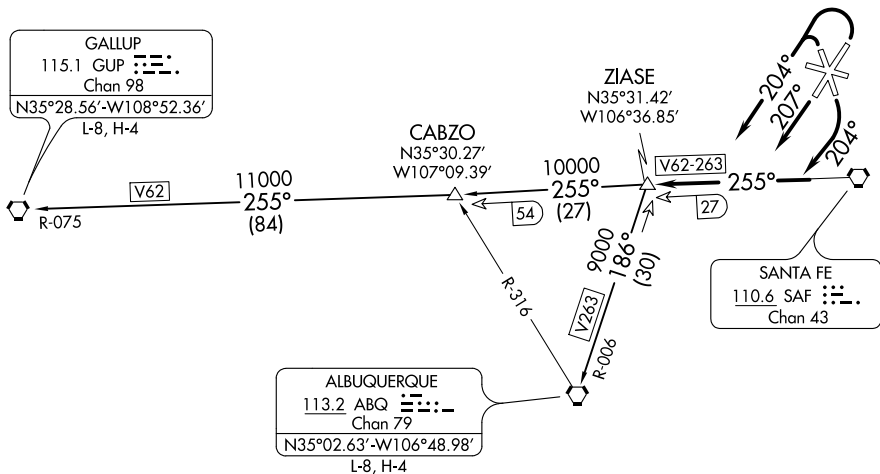
ATIS 128.55
GND CON
121.7
SANTA FE TOWER*
119.5 (CTAF) 239.3
ALBUQUERQUE CENTER
132.8 346.35

CAUTION: Mountainous terrain all quadrants.

**TOP ALTITUDE:
ASSIGNED BY ATC**

TAKEOFF MINIMUMS

Rwy 2: Standard with minimum climb of 235' per NM to 8200.
Rwy 33: Standard with minimum climb of 310' per NM to 8200.



SW-1, 27 JAN 2022 to 24 FEB 2022

SW-1, 27 JAN 2022 to 24 FEB 2022

NOTE: Chart not to scale.

DEPARTURE ROUTE DESCRIPTION

TAKEOFF RUNWAYS 2, 33: Climbing left turn heading 204° thence. . . .

TAKEOFF RUNWAY 15: Climbing right turn heading 204° thence. . . .

TAKEOFF RUNWAY 20: Climb heading 207° thence. . . .

. . . . intercept and proceed on SAF R-255 to ZIAS4 INT, then on (transition) or (assigned route).

ALBUQUERQUE TRANSITION (ZIAS4.ABQ): From over ZIAS4 INT on ABQ R-006 to ABQ VORTAC.

GALLUP TRANSITION (ZIAS4.GUP): From over ZIAS4 INT on SAF R-255 and GUP R-075 to GUP VORTAC.

ZIAS4 FOUR DEPARTURE

(ZIAS4.ZIASE) 27APR17

SANTA FE, NEW MEXICO
SANTA FE MUNI (SAF)