

LOC I-SAC <b>110.3</b>	APP CRS <b>019°</b>	Rwy Idg 5503 TDZE 21 Apt Elev 24
---------------------------	------------------------	---

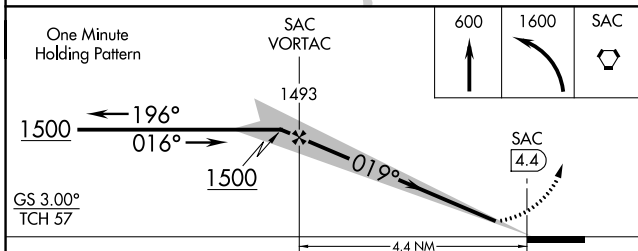
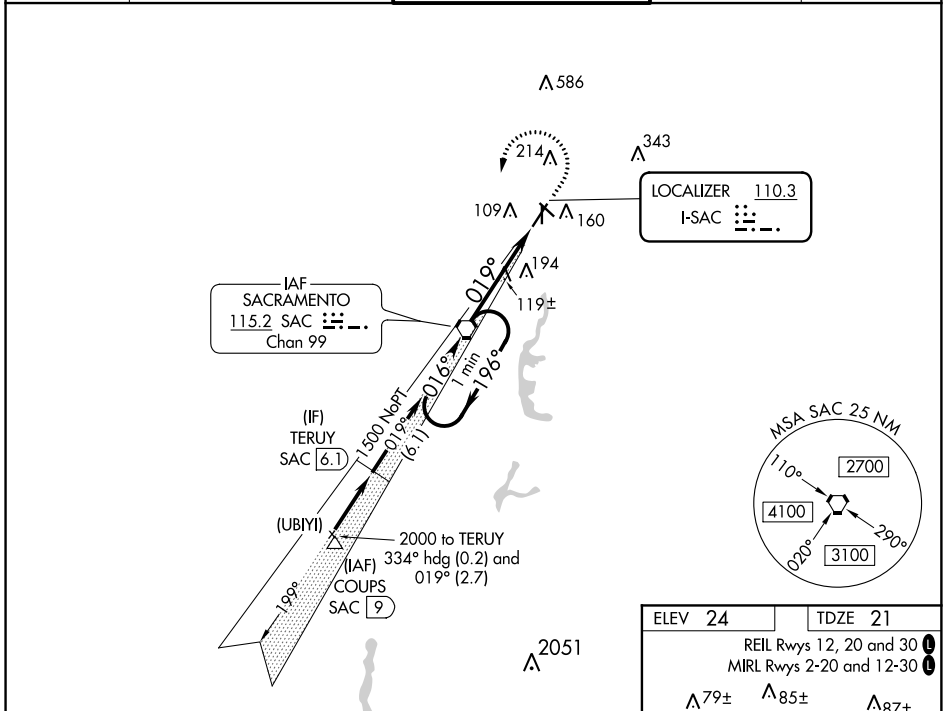
# ILS or LOC RWY 2

SACRAMENTO EXECUTIVE (SAC)

**▼** Night landing: Rwy 34 NA. For inop MALSR, increase S-ILS 2 all Cats visibility to 7/8.  
**▲** For inop MALSR when using Sacramento Intl altimeter setting, increase S-ILS 2 all Cats visibility to 1. When local altimeter setting not received, use Sacramento Intl altimeter setting and increase DA to 322, increase all MDA 40 feet.

MALSR 	MISSED APPROACH: Climb to 600 then climbing left turn to 1600 direct SAC VORTAC and hold.
-----------	--

ATIS <b>125.5</b>	NORCAL APP CON <b>127.4 317.5</b>	EXEC TOWER ★ <b>119.5 (CTAF) 0 278.8</b>	GND CON <b>125.0</b>	UNICOM <b>122.95</b>
----------------------	--------------------------------------	---	-------------------------	-------------------------



ELEV 24	TDZE 21
REIL Rwys 12, 20 and 30 MIRL Rwys 2-20 and 12-30	
FAF to MAP 4.4 NM	
Knots	60 90 120 150 180
Min:Sec	4:24 2:56 2:12 1:46 1:28

CATEGORY	A	B	C	D
S-ILS 2	294-1/2 273 (300-1/2)			
S-LOC 2	380-1/2	359 (400-1/2)	380-5/8	359 (400-5/8)
CIRCLING	500-1 476 (500-1)	520-1 496 (500-1)	520-1 1/2 496 (500-1 1/2)	580-2 556 (600-2)

SW-2, 21 JUN 2018 to 19 JUL 2018

SW-2, 21 JUN 2018 to 19 JUL 2018

WAAS CH <b>62810</b> <b>W02A</b>	APP CRS <b>019°</b>	Rwy Idg TDZE Apt Elev	<b>5503</b> <b>21</b> <b>24</b>
--	------------------------	-----------------------------	---------------------------------------

# RNAV (GPS) RWY 2

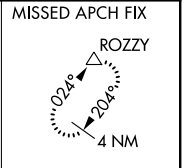
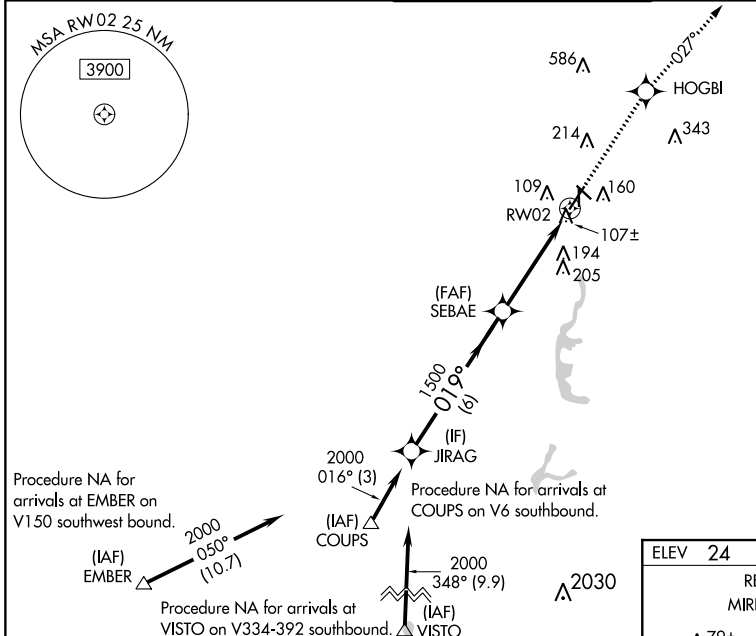
## SACRAMENTO EXECUTIVE (SAC)

**⚠** Baro-VNAV NA when using Sacramento Intl altimeter setting. For uncompensated Baro-VNAV systems, LNAV/VNAV NA below -1.5°C (5°F) or above 54°C (130°F).  
**⚠** DME/DME RNP-0.3 NA. When local altimeter setting not received, use Sacramento Intl altimeter setting and increase LPV DA to 322; increase LNAV/VNAV DA to 401 and all visibilities 1/8 mile; increase all MDA 40 feet and LNAV Cats C/D visibility 1/8 mile.  
 Night Landing: Rwy 34 NA. For inoperative MALSR, increase LPV all Cats visibility to 3/8. For inoperative MALSR when using Sacramento Intl altimeter setting, increase LPV all Cats visibility to 1.

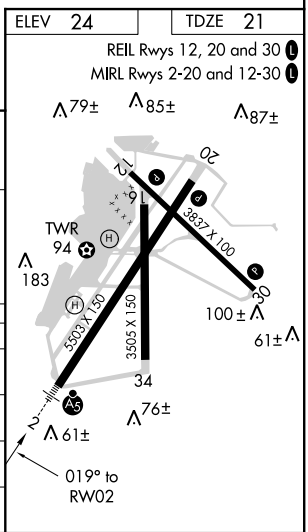


**MISSED APPROACH:**  
 Climb to 3000 direct HOGBI and on track 027° to ROZZY and hold.

ATIS <b>125.5</b>	NORCAL APP CON <b>127.4 317.5</b>	EXEC TOWER * <b>119.5 (CTAF) 0 278.8</b>	GND CON <b>125.0</b>	UNICOM <b>122.95</b>
----------------------	--------------------------------------	---	-------------------------	-------------------------



JIRAG	2000	019°	SEBAE	1500	RW02
GP 3.00° TCH 57					
	6 NM		4.4 NM		
CATEGORY	A	B	C	D	
LPV DA		294-1/2	273 (300-1/2)		
LNAV/VNAV DA		373-5/8	352 (400-5/8)		
LNAV MDA	440-1/2	419 (500-1/2)	440-3/4	419 (500-3/4)	
CIRCLING	500-1 476 (500-1)	520-1 496 (500-1)	520-1 1/2 496 (500-1 1/2)	580-2 556 (600-2)	



SW-2, 21 JUN 2018 to 19 JUL 2018

SW-2, 21 JUN 2018 to 19 JUL 2018

