

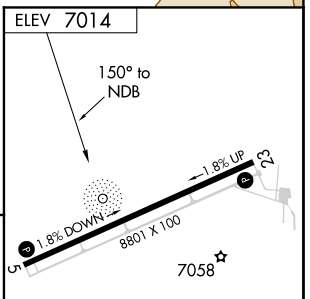
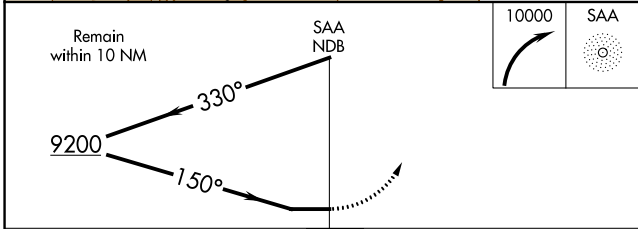
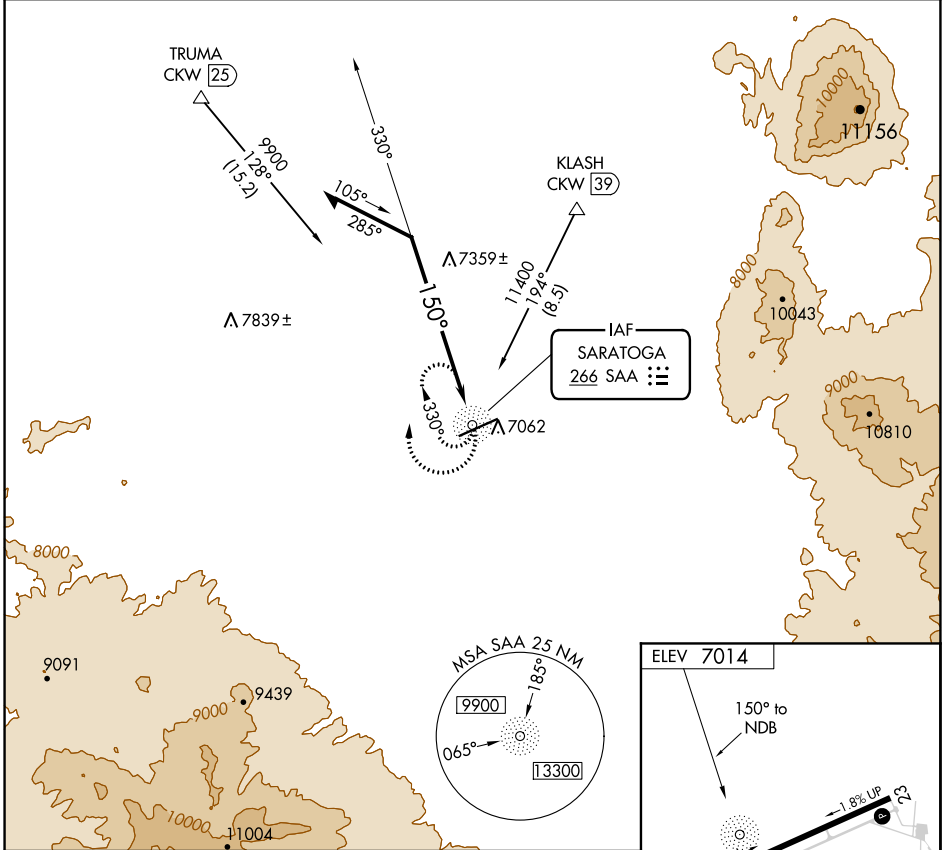
NDB SAA 266	APP CRS 150°	Rwy Idg TDZE Apt Elev	N/A N/A 7014
-----------------------	------------------------	-----------------------------	---

NDB-A
SHIVELY FLD (SAA)

▽ When local altimeter setting not received, use Rawlins altimeter setting and increase all MDAs 100 feet, increase Cat C visibility 1/4 SM and Cat D visibility 1/2 SM.

△ NA MISSED APPROACH: Climbing right turn to 10000 in SAA NDB holding pattern.

AWOS-3PT 118.175	DENVER CENTER 132.1 254.35	UNICOM 122.8 (CTAF) 0
----------------------------	--------------------------------------	--



CATEGORY	A	B	C	D
CIRCLING	7720-1 1/4	706 (800-1 1/4)	7720-2 706 (800-2)	7820-2 1/2 806 (900-2 1/2)

REIL Rwy 5 and 23 **0**
MIRL Rwy 5-23 **0**

NW-1, 11 AUG 2022 to 08 SEP 2022

NW-1, 11 AUG 2022 to 08 SEP 2022

WAAS CH 65820 W05A	APP CRS 054°	Rwy Idg TDZE Apt Elev	8801 7014 7014
---------------------------------	------------------------	-----------------------------	---

RNAV (GPS) RWY 5

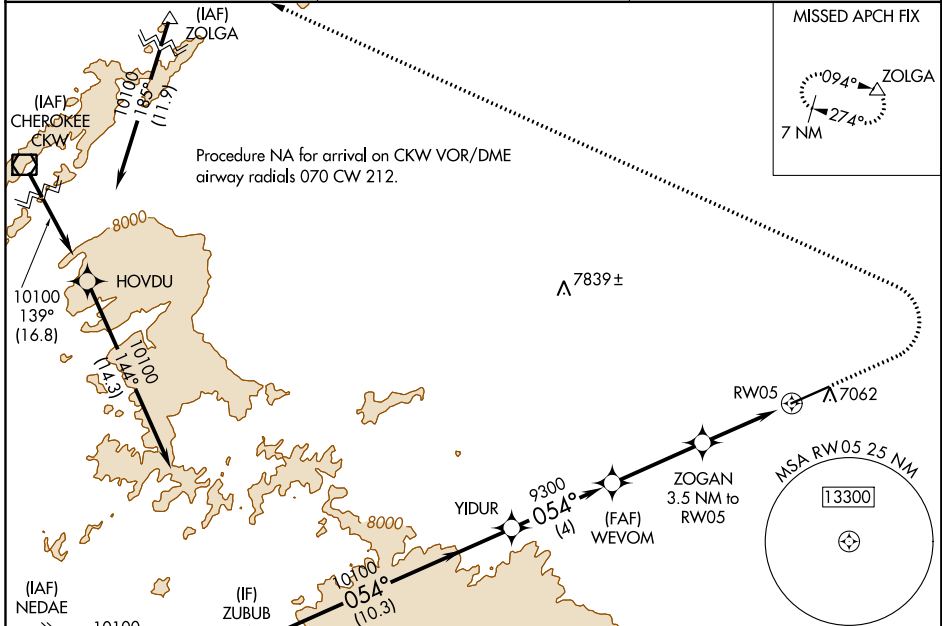
SHIVELY FLD (SAA)

RNP APCH.

▼ For uncompensated Baro-VNAV systems, LNAV/VNAV NA below -28°C or above 54°C.

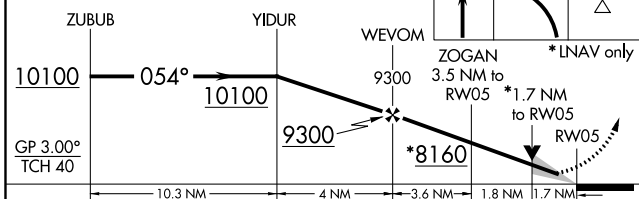
MISSED APPROACH: Climb to 7800 then climbing left turn to 11000 direct ZOLGA and hold.

AWOS-3PT 118.175	DENVER CENTER 132.1 254.35	UNICOM 122.8 (CTAF)
----------------------------	--------------------------------------	-------------------------------

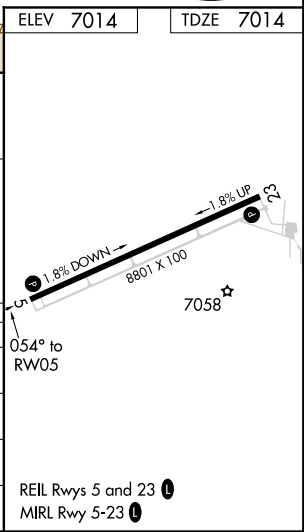


(IAF) NEDAE 10100 077° (18.4)	(IF) ZUBUB 10100 054° (10.3)	9091	9439	ELEV 7014	TDZE 7014
--	---------------------------------------	------	------	-----------	-----------

VGSI and RNAV glidepath not coincident (VGSI Angle 3.00/TCH 49).



CATEGORY	A	B	C	D
LPV DA	7264-7/8		250 (300-7/8)	
LNAV/VNAV DA	7513-13/4		499 (500-13/4)	
LNAV MDA	7620-1 606 (700-1)		7620-13/4 606 (700-13/4)	
CIRCLING	7620-1 606 (700-1)		7700-2 686 (700-2)	7820-2 1/2 806 (900-2 1/2)



NW-1, 11 AUG 2022 to 08 SEP 2022

NW-1, 11 AUG 2022 to 08 SEP 2022

REIL Rwy 5 and 23
MIRL Rwy 5-23

APP CRS 151°	Rwy Idg TDZE Apt Elev	N/A N/A 7014
------------------------	-----------------------------	---

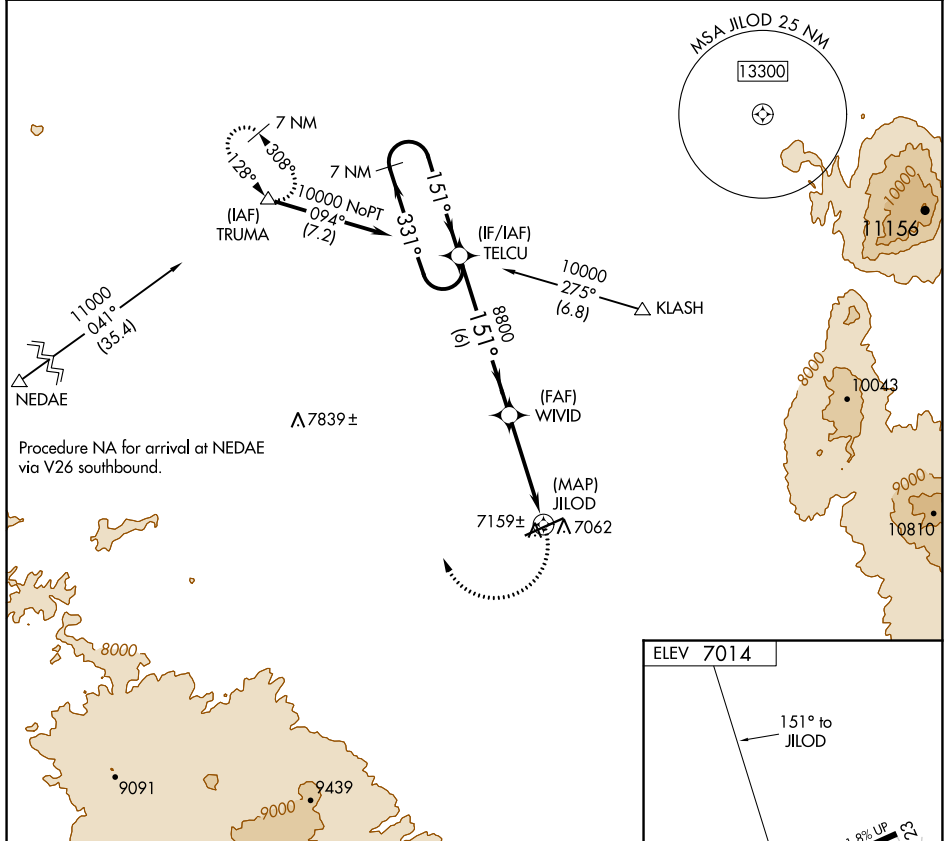
RNAV (GPS)-B

SHIVELY FLD (SAA)

NA DME/DME RNP-0.3 NA. When local altimeter setting not received, use Rawlins altimeter setting and increase all MDAs 100 feet, increase Cat C visibility ¼ SM and Cat D visibility ½ SM.

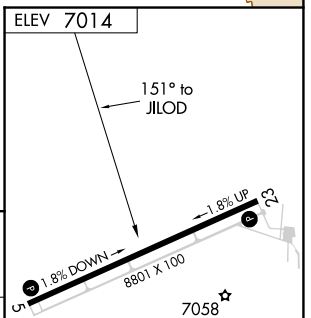
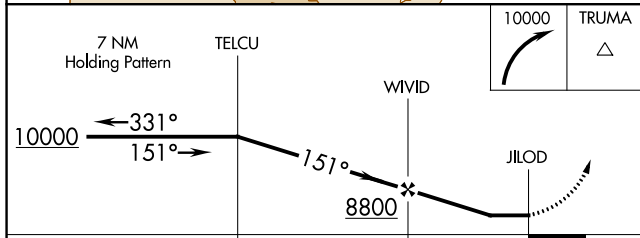
MISSED APPROACH: Climbing right turn to 10000 direct TRUMA and hold.

AWOS-3PT 118.175	DENVER CENTER 132.1 254.35	UNICOM 122.8 (CTAF)
-----------------------------------	---	--------------------------------------



NW-1, 11 AUG 2022 to 08 SEP 2022

NW-1, 11 AUG 2022 to 08 SEP 2022



CATEGORY	A	B	C	D
CIRCLING	7600-1 586 (600-1)	7620-1 606 (700-1)	7700-2 686 (700-2)	7820-2½ 806 (900-2½)

ELEV 7014

151° to JILOD

1.8% DOWN

1.8% UP

8800 X 100

7058

REIL Rwy 5 and 23

MIRL Rwy 5-23