

LOC I-RVL	APP CRS	Rwy ldg TDZE	5001
109.3	059°	Apt Elev	819

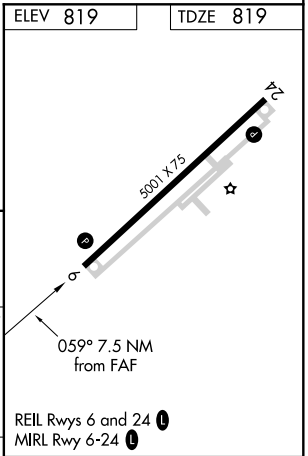
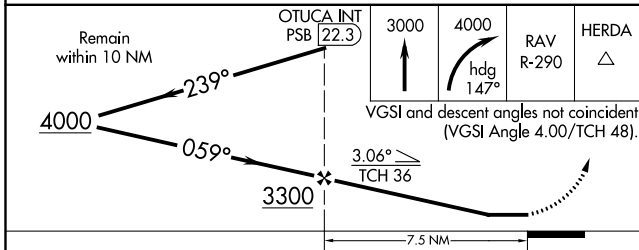
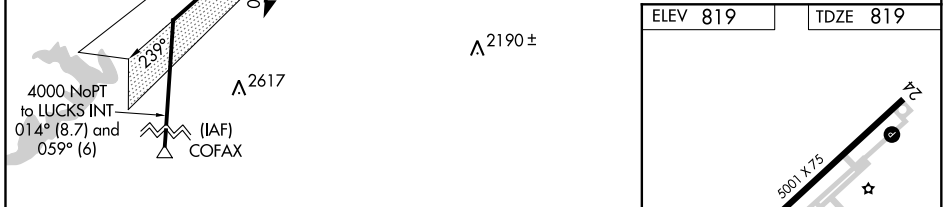
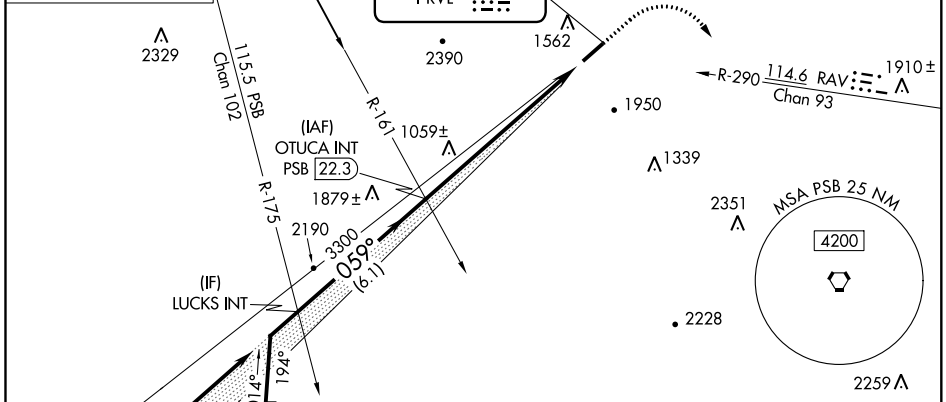
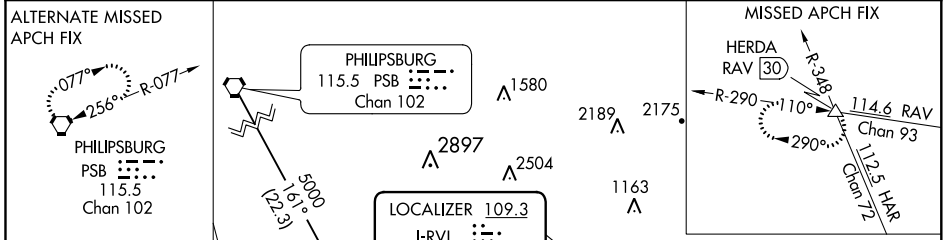
LOC RWY 6

MIFFLIN COUNTY (R.V.L)

NA Rwy 6 helicopter visibility reduction below ¾ SM NA. VDP NA with State College altimeter setting. When local altimeter setting not received, use State College altimeter setting and increase all MDAs 100 feet.

MISSED APPROACH: Climb to 3000 then climbing right turn to 4000 on heading 147° and RAV VORTAC R-290 to HERDA INT/RAV 30 DME and hold.

AWOS-3PT 123.85	NEW YORK CENTER 134.8 338.3	UNICOM 122.7 (CTAF)
---------------------------	---------------------------------------	-------------------------------



CATEGORY	FAF to MAP 7.5 NM					
	A	B	C	D		
S-6	1840-1¼ 1021 (1100-1¼)	1840-1½ 1021 (1100-1½)	1840-3	1021 (1100-3)		
	Knots	60	90	120	150	180
	Min:Sec	7:30	5:00	3:45	3:00	2:30

NE-4, 27 JAN 2022 to 24 FEB 2022

NE-4, 27 JAN 2022 to 24 FEB 2022

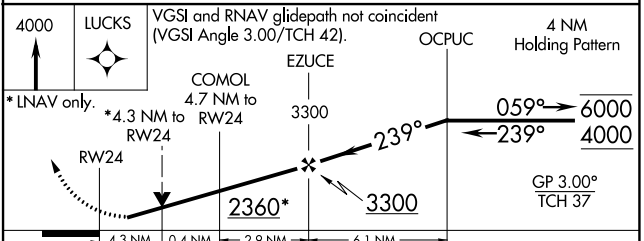
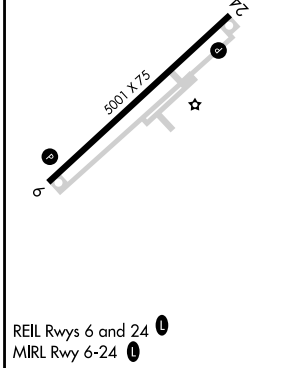
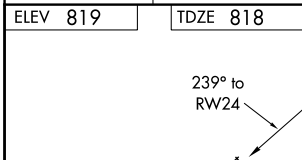
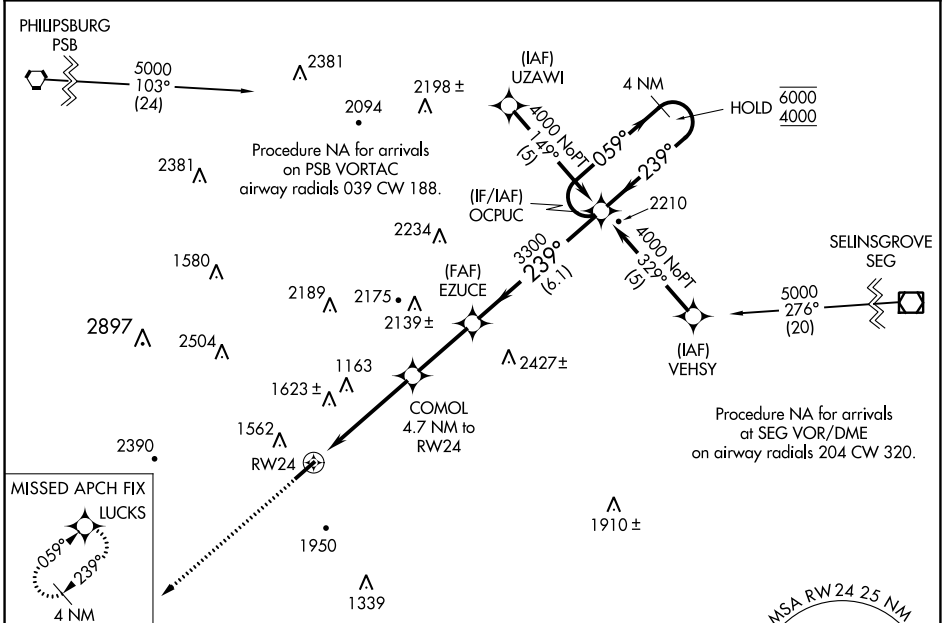
WAAS CH 78107 W24A	APP CRS 239°	Rwy Idg TDZE Apt Elev	5001 818 819
--	------------------------	-----------------------------	---

RNAV (GPS) RWY 24

MIFFLIN COUNTY (R.V.L)

RNP APCH. 	VDP NA when using State College altimeter setting. Rwy 24 helicopter visibility reduction below 3/4 SM NA. When local altimeter setting not received, use State College altimeter setting and increase LPV DA to 1602 feet and all MDAs 100 feet; increase LPV visibility all Cats to 2 1/2 SM.	MISSED APPROACH: Climb to 4000 direct LUCKS and hold.
---------------	---	--

AWOS-3PT 123.85	NEW YORK CENTER 134.8 338.3	UNICOM 122.7 (CTAF) 0
---------------------------	---------------------------------------	---------------------------------



CATEGORY	A	B	C	D
LPV DA	1509-2 691 (700-2)			1509-2 1/4 691 (700-2 1/4)
LNAV MDA	2220-1 1/4 1402 (1500-1 1/4)	2220-1 1/2 1402 (1500-1 1/2)	2220-3 1402 (1500-3)	

NE-4, 27 JAN 2022 to 24 FEB 2022

NE-4, 27 JAN 2022 to 24 FEB 2022

APP CRS	Rwy Idg	5001
059°	TDZE	819
	Apt Elev	819

RNAV (GPS) RWY 6

MIFFLIN COUNTY (R.V.L)

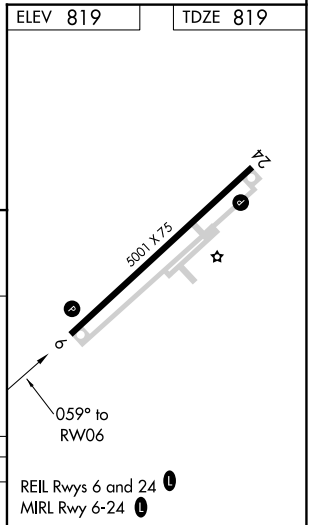
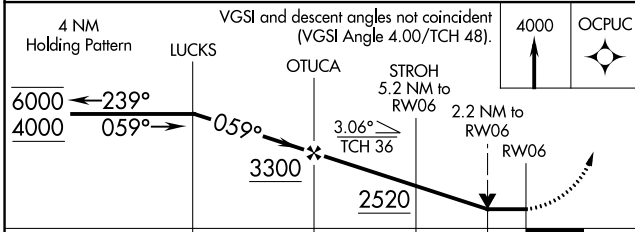
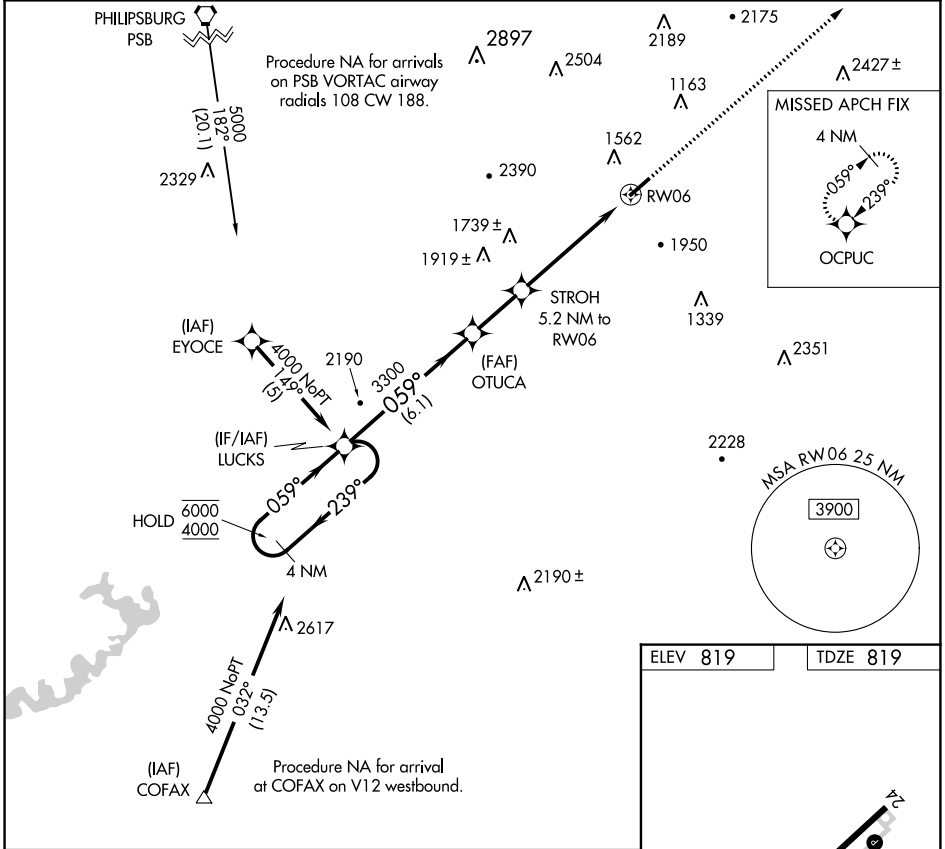
RNP APCH.

⚠ Rwy 6 helicopter visibility reduction below 3/4 SM NA. VDP NA when using State College altimeter setting. When local altimeter setting not received, use State College altimeter setting and increase all MDAs 100 feet.

⚠ -13°C

MISSED APPROACH:
Climb to 4000 direct OCPUC and hold.

AWOS-3PT 123.85	NEW YORK CENTER 134.8 338.3	UNICOM 122.7 (CTAF) Ⓛ
---------------------------	---------------------------------------	--



CATEGORY	A	B	C	D
LNAV MDA	2180-1 1/4 1361 (1400-1 1/4)	2180-1 1/2 1361 (1400-1 1/2)	2180-3	1361 (1400-3)

NE-4, 27 JAN 2022 to 24 FEB 2022

NE-4, 27 JAN 2022 to 24 FEB 2022