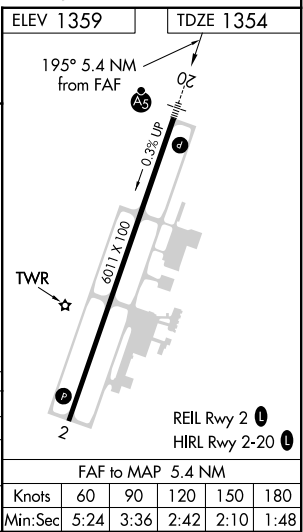
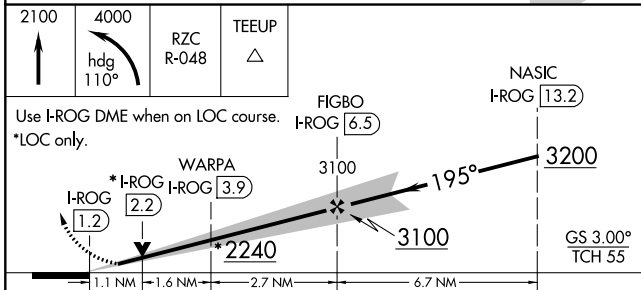
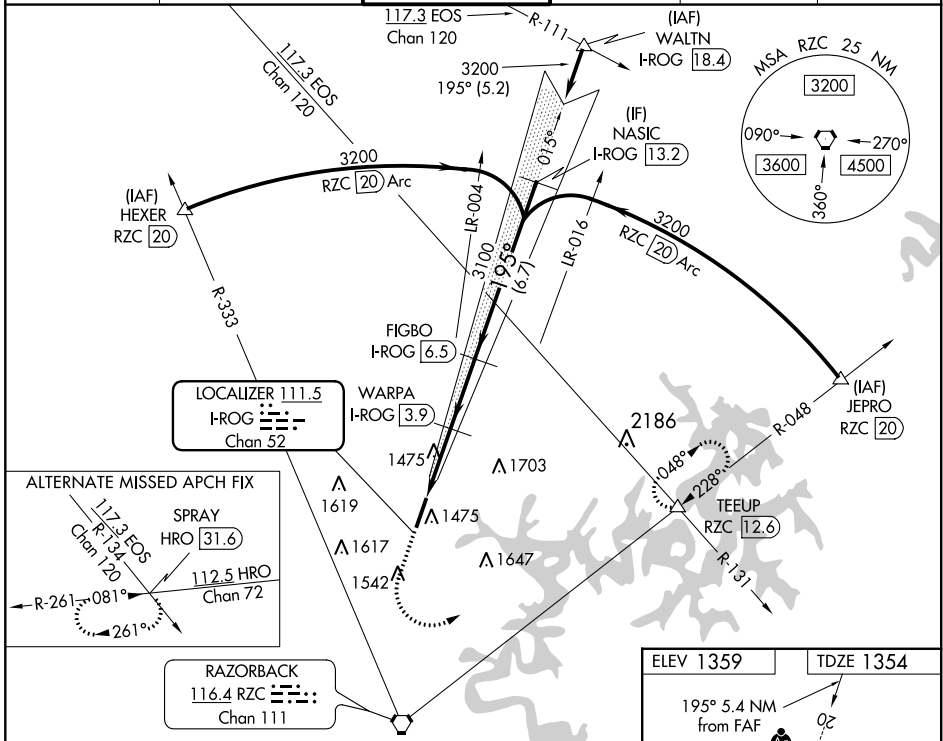


LOC/DME I-ROG 111.5 Chan 52	APP CRS 195°	Rwy Idg 6011 TDZE 1354 Apt Elev 1359
--	------------------------	---

ILS or LOC RWY 20

ROGERS EXEC-CARTER FLD (ROG)

<p>▼ DME required. ▲ Autopilot coupled approach NA below 1632.</p>	<p>MALSR </p>	<p>MISSED APPROACH: Climb to 2100, then climbing left turn to 4000 on heading 110° and RZC VORTAC R-048 to TEEUP INT/RZC 12.6 DME and hold.</p>			
AWOS-3PT 134.375	RAZORBACK APP CON * 126.6 305.2	ROGERS TOWER * 119.375 (CTAF) 0	GND CON 118.0	CLNC DEL 121.75	CLNC DEL 121.75 (When twr closed)



2100	4000	RZC R-048	TEEUP	
Use I-ROG DME when on LOC course. *LOC only.				
CATEGORY	A	B	C	D
S-ILS 20	1554-½ 200 (200-½)			
S-LOC 20	1740-½ 386 (400-½)		1740-⅝ 386 (400-⅝)	
CIRCLING	1820-1 461 (500-1)		2020-1¾ 661 (700-1¾) 2020-2 661 (700-2)	

SC-1, 02 DEC 2021 to 30 DEC 2021

SC-1, 02 DEC 2021 to 30 DEC 2021

WAAS CH 82640 W02A	APP CRS 015°	Rwy Idg TDZE 1359 Apt Elev 1359	6011
---------------------------------	------------------------	---	-------------

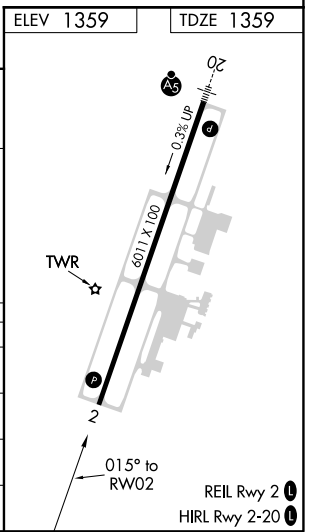
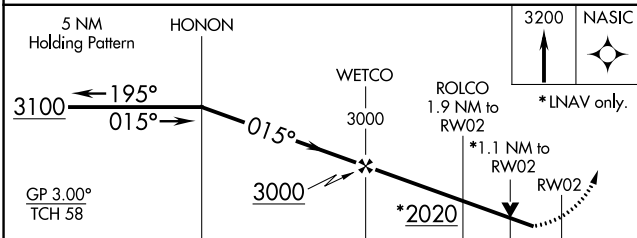
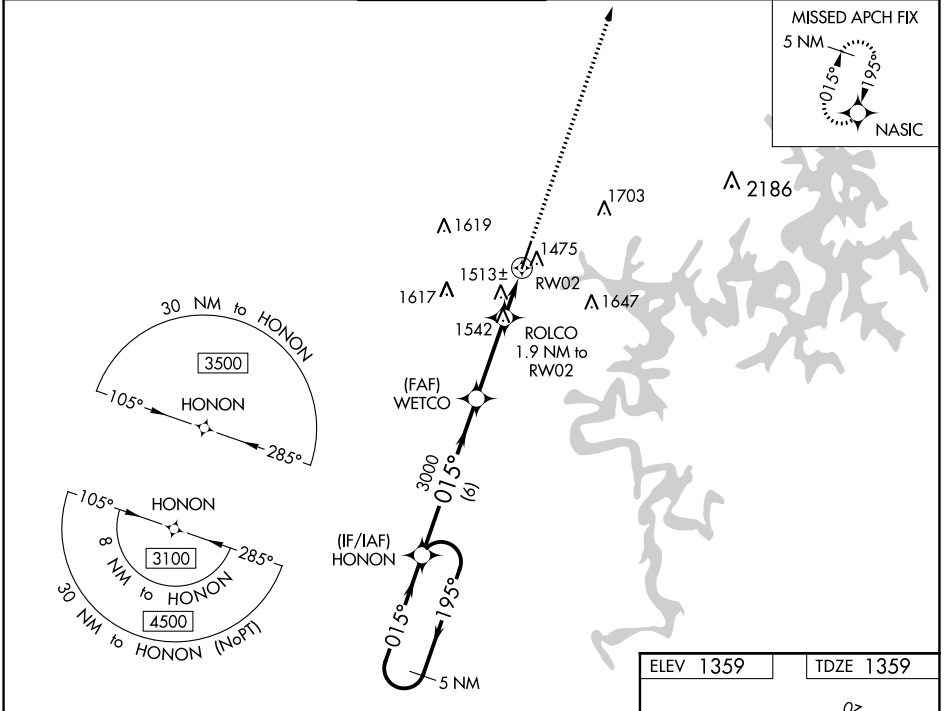
RNAV (GPS) RWY 2

ROGERS EXEC-CARTER FLD (ROG)

▼ For uncompensated Baro-VNAV systems, LNAV/VNAV NA below -17°C (2°F) or above 54°C (130°F). Rwy 2 helicopter visibility reduction below 3/4 SM NA. DME/DME RNP-0.3 NA.

MISSED APPROACH: Climb to 3200 direct NASIC and hold.

AWOS-3PT 134.375	RAZORBACK APP CON* 126.6 305.2	ROGERS TOWER* 119.375 (CTAF) 0	GND CON 118.0	CLNC DEL 121.75	CLNC DEL 121.75 (When hwr closed)
----------------------------	--	--	-------------------------	---------------------------	--



CATEGORY	A	B	C	D
LPV DA		1620-7/8	261 (300-7/8)	
LNAV/VNAV DA		1674-1	315 (400-1)	
LNAV MDA	1780-1	421 (500-1)	1780-1 1/4	421 (500-1 1/4)
C CIRCLING	1820-1	461 (500-1)	2020-1 3/4 661 (700-1 3/4)	2020-2 661 (700-2)

SC-1, 02 DEC 2021 to 30 DEC 2021

SC-1, 02 DEC 2021 to 30 DEC 2021

WAAS CH 40003 W20A	APP CRS 195°	Rwy ldg 6011
		TDZE 1354
		Apt Elev 1359

RNAV (GPS) RWY 20

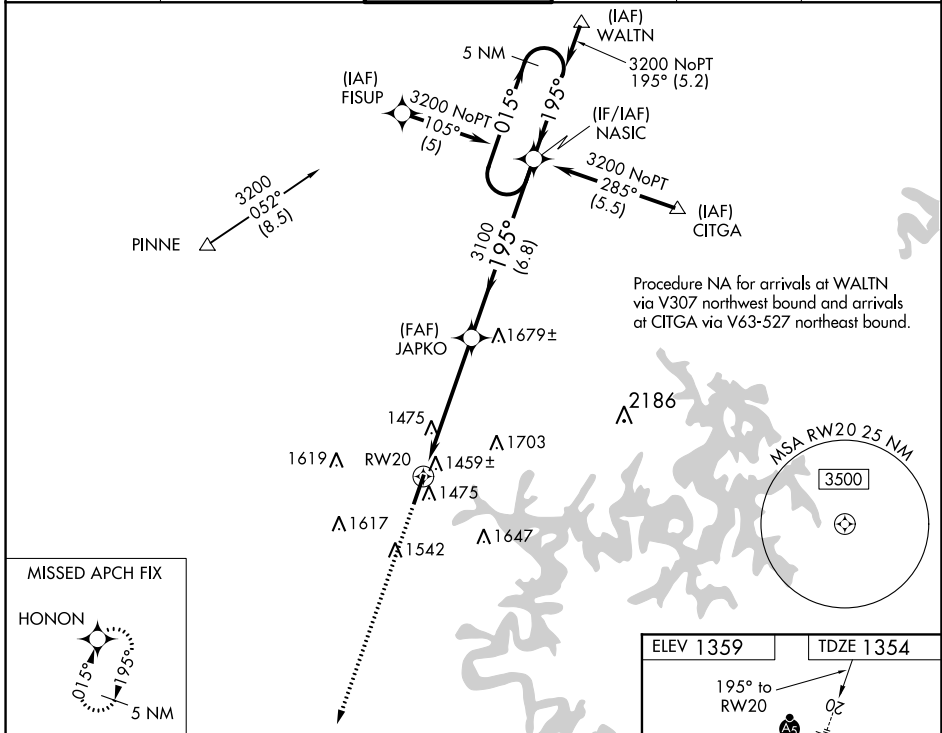
ROGERS EXEC-CARTER FLD (ROG)

⚠ For inop MALS, increase LNAV Cat D to 1¼. For uncompensated Baro-VNAV systems, LNAV/VNAV NA below -17°C (2°F) or above 46°C (114°F). DME/DME RNP-0.3 NA. If local altimeter setting not received, use Bentonville Muni altimeter setting and increase all DAs 22 feet and all MDAs 40 feet. Baro-VNAV and VDP NA when using Bentonville Muni altimeter setting.

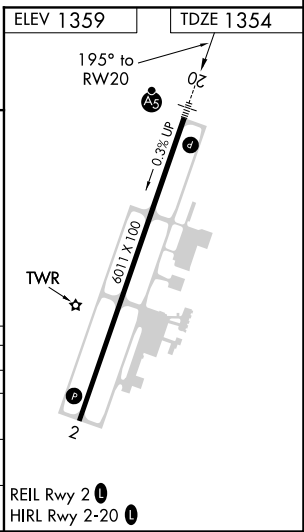
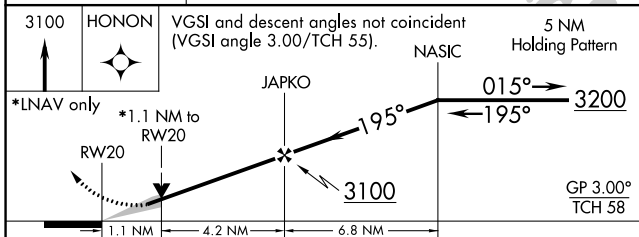
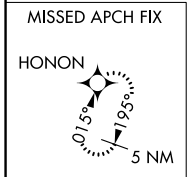


MISSED APPROACH:
Climb to 3100 direct HONON and hold.

AWOS-3PT 134.375	RAZORBACK APP CON* 126.6 305.2	ROGERS TOWER* 119.375 (CTAF)	GND CON 118.0	CLNC DEL 121.75	CLNC DEL 121.75 <small>(When twr closed)</small>
----------------------------	--	--	-------------------------	---------------------------	---



Procedure NA for arrivals at WALTN via V307 northwest bound and arrivals at CITGA via V63-527 northeast bound.



CATEGORY	A	B	C	D
LPV DA	1604-½		250 (300-½)	
LNAV/VNAV DA	1730-¾		376 (400-¾)	
LNAV MDA	1740-½		386 (400-½)	
CIRCLING	1820-1		2020-2	
	461 (500-1)		661 (700-2)	

SC-1, 02 DEC 2021 to 30 DEC 2021

SC-1, 02 DEC 2021 to 30 DEC 2021