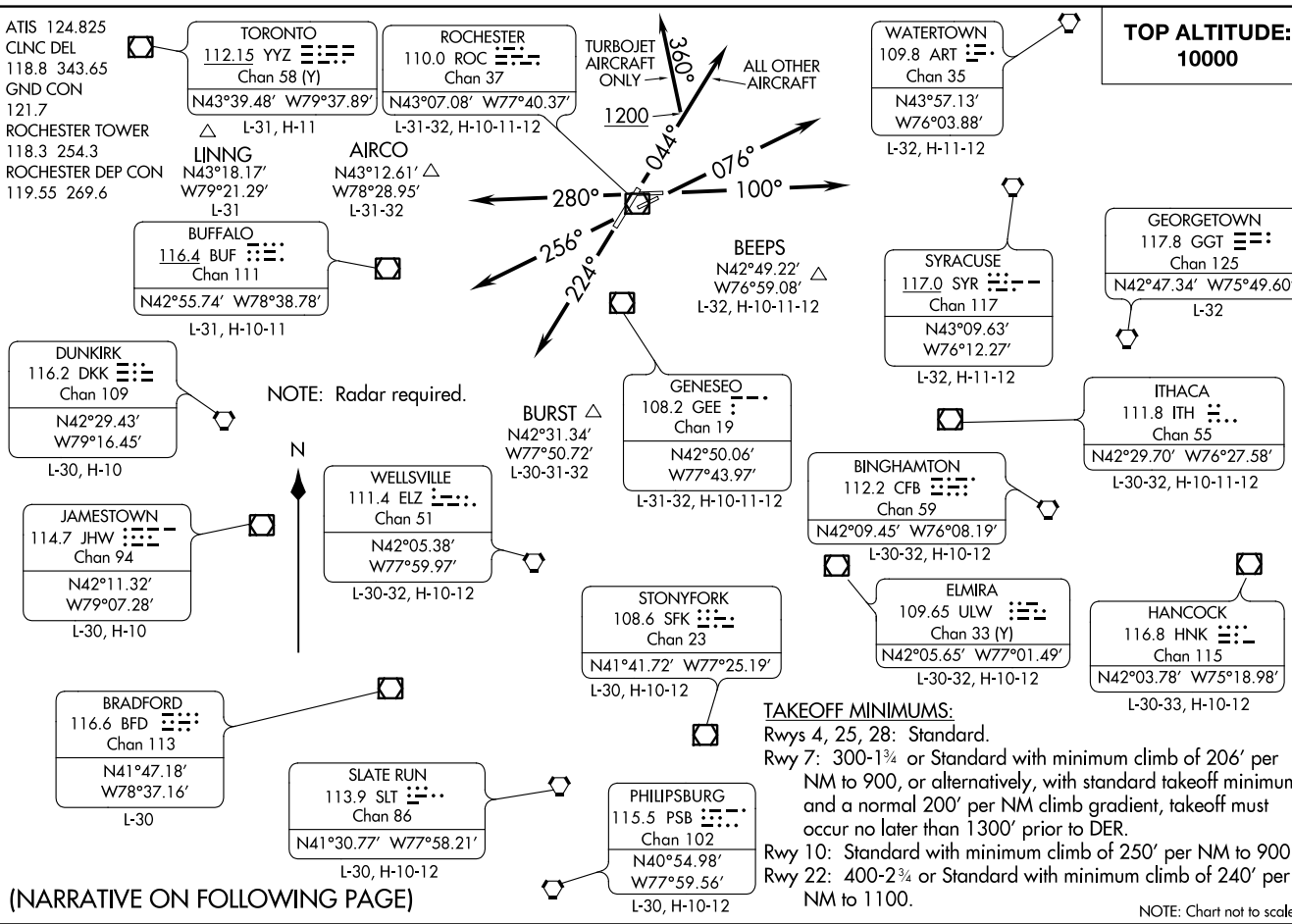


XEROX FOUR DEPARTURE
(XEROX4.XEROX) 21JUL16

(XEROX4.XEROX) 17117
XEROX FOUR DEPARTURE

AL-351 (FAA)

GREATER ROCHESTER INTL (ROC)
ROCHESTER, NEW YORK



(NARRATIVE ON FOLLOWING PAGE)

NOTE: Chart not to scale.

ROCHESTER, NEW YORK
GREATER ROCHESTER INTL (ROC)

DEPARTURE ROUTE DESCRIPTION



TAKEOFF RUNWAY 4:

TURBOJET AIRCRAFT ONLY: Climb heading 044° to 1200,
then heading 360°, thence

ALL OTHER AIRCRAFT: Climb heading 044°, thence

TAKEOFF RUNWAY 7: Climb heading 076°, thence

TAKEOFF RUNWAY 10: Climb heading 100°, thence

TAKEOFF RUNWAY 22: Climb heading 224°, thence

TAKEOFF RUNWAY 25: Climb heading 256°, thence

TAKEOFF RUNWAY 28: Climb heading 280°, thence

. . . . Expect radar vectors to intercept filed/assigned route or enroute fix or navaid.
Maintain 10000 or assigned lower altitude. Expect further clearance to requested
altitude/flight level ten minutes after departure.

TAKEOFF OBSTACLE NOTES:

- Rwy 4: Tree 2081' from DER, 532' left of centerline, 53' AGL/612' MSL.
Tree 3890' from DER, 1119' right of centerline, 100' AGL/659' MSL.
Tower 1806' from DER, 817' right of centerline, 60' AGL/611' MSL.
- Rwy 7: Dome 1.4 NM from DER, 1164' right of centerline, 213' AGL/756' MSL.
Trees beginning 2732' from DER, 426' left of centerline, up to 93' AGL/622' MSL.
- Rwy 10: Dome beginning 1.1 NM from DER 1543' left of centerline, 213' AGL/756' MSL.
Trees beginning 743' from DER, 248' left of centerline, up to 85' AGL/636' MSL.
Tree beginning 2676' from DER, 112' right of centerline, up to 100' AGL/616' MSL.
Pole 950' from DER, 655' right of centerline, 41' AGL/570' MSL.
- Rwy 22: Tower 2.2 NM from DER, 3550' right of centerline, 412' AGL/934' MSL.
Tree 1997' from DER, 832' right of centerline, 63' AGL/587' MSL.
Tree 3026' from DER, 935' left of centerline, 105' AGL/621' MSL.
- Rwy 25: T-L Tower beginning 1523' from DER, 819' left of centerline, 61' AGL/592' MSL.
Poles beginning 1655' from DER, 330' left of centerline, up to 82' AGL/617' MSL.
- Rwy 28: Railroad beginning 326' from DER, 539' right of centerline, 23' AGL/574' MSL.
T-L Towers beginning 1239' from DER, 253' left of centerline, up to 75' AGL/614' MSL.
Trees beginning 807' from DER, 148' left of centerline, up to 87' AGL/626' MSL.
Trees beginning 887' from DER, 113' right of centerline, up to 91' AGL/632' MSL.

NE-2, 22 JUN 2017 to 20 JUL 2017

NE-2, 22 JUN 2017 to 20 JUL 2017