

(EDUKY5.EDUKY) 18060

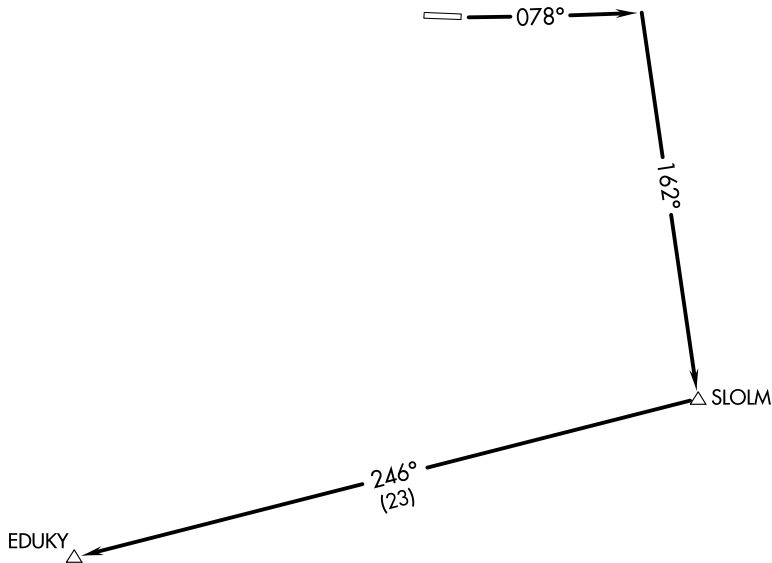
EDUKY FIVE DEPARTURE (RNAV)

AL-6741 (FAA)

RIFLE GARFIELD COUNTY (R.I.L.)
RIFLE, COLORADO

DENVER CENTER
134.95 327.075

**TOP ALTITUDE:
14000**



SW-1, 27 JAN 2022 to 24 FEB 2022

SW-1, 27 JAN 2022 to 24 FEB 2022

NOTE: RNAV 1.
NOTE: GPS required.

TAKEOFF MINIMUMS

Rwy 26: NA- ATC.

Rwy 8: Standard with a minimum climb of 396' per NM to 11100.

NOTE: Chart not to scale.



DEPARTURE ROUTE DESCRIPTION

TAKEOFF RUNWAY 8: Climb heading 078° to intercept course 162° to SLOLM, then on track 246° to EDUKY, thence. . . .

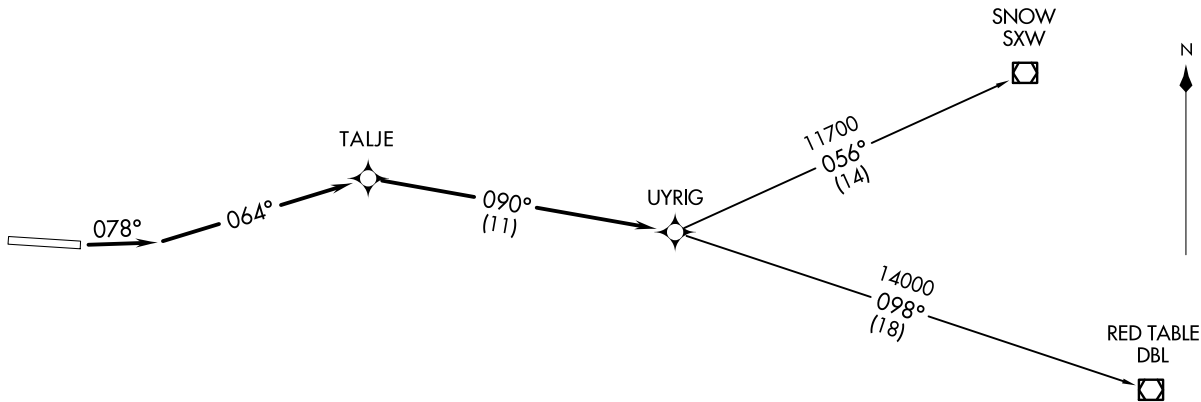
. . . .on assigned route, maintain 14000, expect clearance to assigned altitude 10 minutes after departure.

EDUKY FIVE DEPARTURE (RNAV)

(EDUKY5.EDUKY) 01FEB18

RIFLE, COLORADO
RIFLE GARFIELD COUNTY (R.I.L.)

**TOP ALTITUDE:
14000**



DENVER CENTER
134.95 327.075

(UYRIG5, UYRIG) 18060

UYRIG FIVE DEPARTURE (RNAV)

AL-6741 (FAA)

RIFLE GARFIELD COUNTY (RTI),
RIFLE, COLORADO

DEPARTURE ROUTE DESCRIPTION

TAKEOFF RUNWAY 8: Climb heading 078° to intercept course 064° to TALJE, then on track 090° to UYRIG, thence. . . .

. . . .on transition or assigned route. Maintain 14000, expect clearance to assigned altitude 10 minutes after departure.

RED TABLE TRANSITION (UYRIG5.DBL)

SNOW TRANSITION (UYRIG5.SXW)

NOTE: RNAV 1.

NOTE: GPS required.

TAKEOFF MINIMUMS

Rwy 26: NA - ATC.

Rwy 8: Standard with minimum climb of 335' per NM to 10000.

NOTE: Chart not to scale.

UYRIG FIVE DEPARTURE (RNAV)
(UYRIG5, UYRIG) 01FEB18

RIFLE, COLORADO
RIFLE GARFIELD COUNTY (RTI)