

WAAS CH <b>86932</b> <b>W08A</b>	APP CRS <b>061°</b>	Rwy Idg TDZE Apt Elev	<b>5285</b> <b>1682</b> <b>1699</b>
--	------------------------	-----------------------------	---

# RNAV (GPS) RWY 8

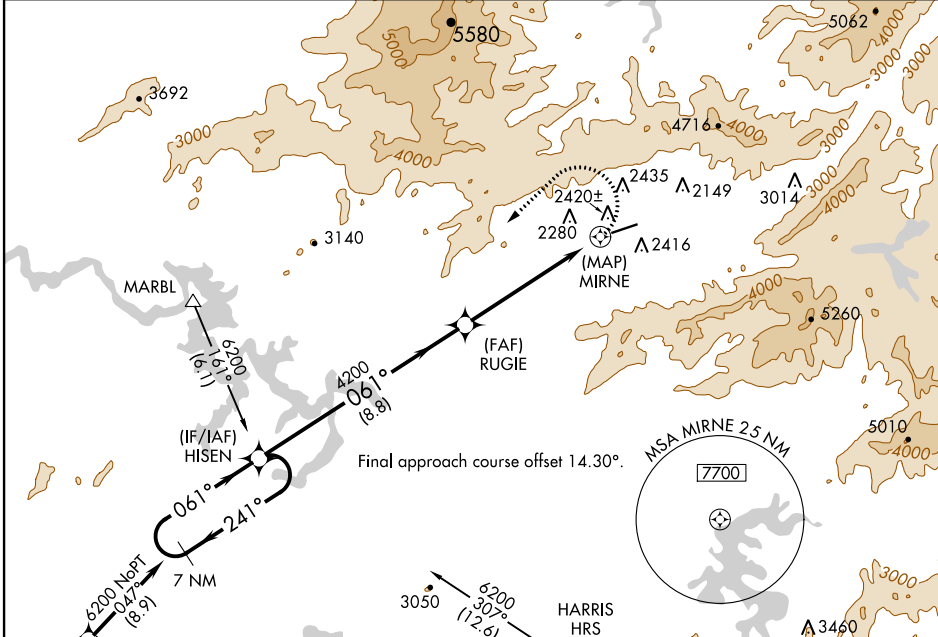
WESTERN CAROLINA RGNL (RHP)

RNP APCH.

**V** Procedure NA at night. When local altimeter setting  
**▲** NA not received, procedure NA.  
**☼** -8°C Helicopter visibility reduction below 1 SM NA.

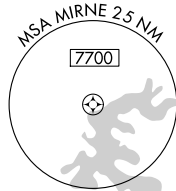
MISSED APPROACH: Climbing left turn to 6200 direct HISEN and hold, continue climb-in-hold to 6200.

AWOS-3 <b>119.675</b>	ATLANTA CENTER <b>134.8 379.95</b>	UNICOM <b>122.8 (CTAF) 0</b>
--------------------------	---------------------------------------	---------------------------------

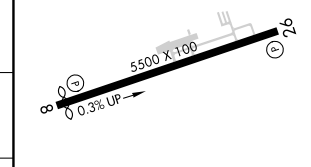
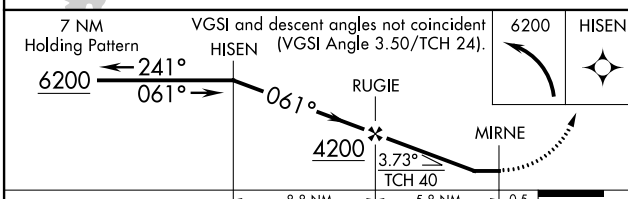


Final approach course offset 14.30°.

Procedure NA for arrivals at HRS VORTAC on V267 southbound.



ELEV 1699	TDZE 1682
-----------	-----------



CATEGORY	A	B	C	D
LP MDA	3980-1¼ 2298 (2300-1¼)	3980-1½ 2298 (2300-1½)	3980-3 2298 (2300-3)	NA
LNAV MDA	4160-1¼ 2478 (2500-1¼)	4160-1½ 2478 (2500-1½)	4160-3 2478 (2500-3)	NA
CIRCLING	4160-1¼ 2461 (2500-1¼)	4160-1½ 2461 (2500-1½)	NA	

REIL Rwy 8 **0**  
MIRL Rwy 8-26 **0**

SE-2, 02 DEC 2021 to 30 DEC 2021

SE-2, 02 DEC 2021 to 30 DEC 2021