

APP CRS	Rwy Idg	<b>4006</b>
<b>167°</b>	TDZE	<b>442</b>
	Apt Elev	<b>442</b>

# RNAV (GPS) RWY 17

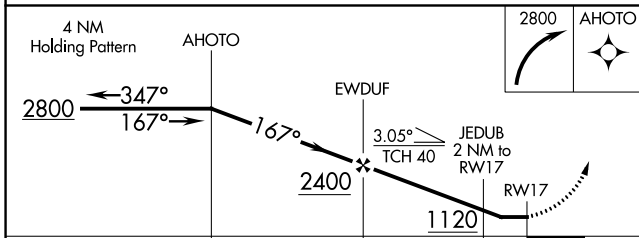
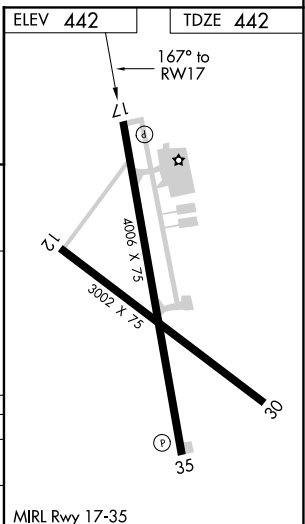
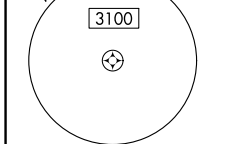
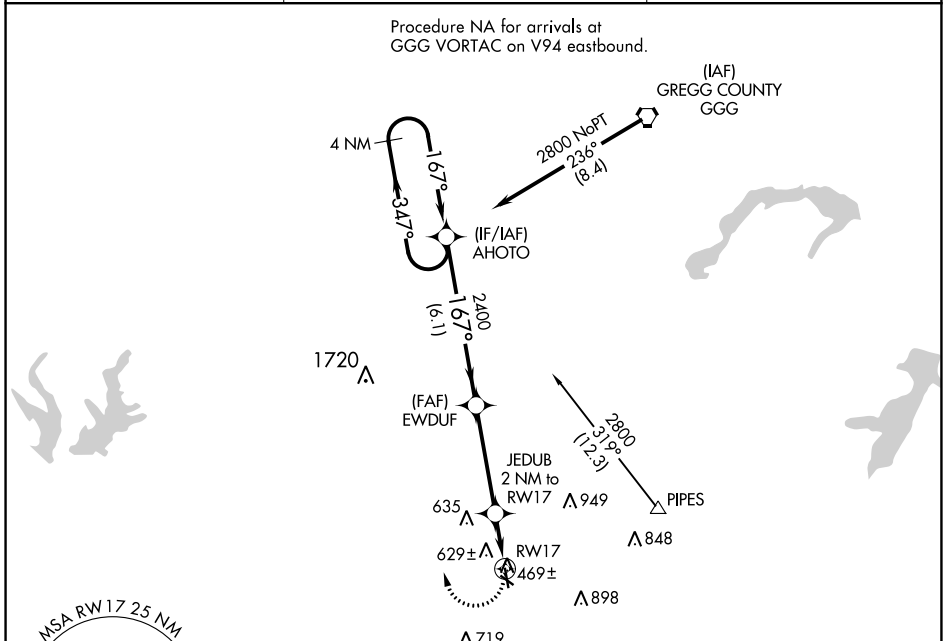
RUSK COUNTY (R.F.I)

RNP APCH

▼ Rwy 17 helicopter visibility reduction below 1 SM NA. When local altimeter setting not received, use Longview altimeter setting and increase all MDA 60 feet.  
 ▲ Rwy 17 Straight-in minimums NA at night. Circling Rwy 12, 17 and 30 NA at night.

MISSED APPROACH: Climbing right turn to 2800 direct AHOTO and hold.

AWOS-3 <b>119,375</b>	LONGVIEW APP CON ★ <b>124.275 257.975</b>	UNICOM <b>122.8</b> (CTAF)
--------------------------	--	-------------------------------



CATEGORY	A	B	C	D
LNVA MDA	980-1	538 (600-1)	980-1½ 538 (600-1½)	NA
CIRCLING	980-1	538 (600-1)	1200-2½ 758 (800-2½)	NA

SC-2, 02 DEC 2021 to 30 DEC 2021

SC-2, 02 DEC 2021 to 30 DEC 2021

MIRL Rwy 17-35

VORTAC GGG <b>112.9</b> Chan 76	APP CRS <b>190°</b>	Rwy Idg TDZE Apt Elev	<b>N/A</b> <b>N/A</b> <b>442</b>
---------------------------------------	------------------------	--------------------------	--

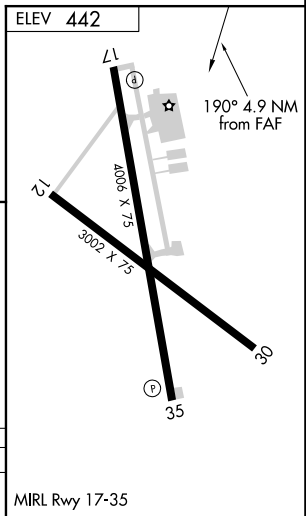
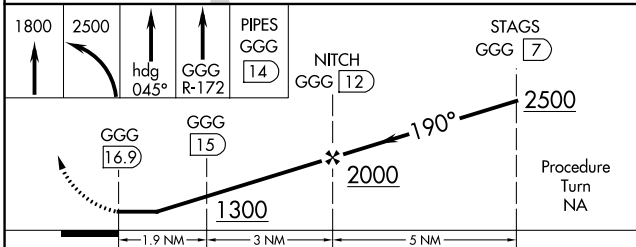
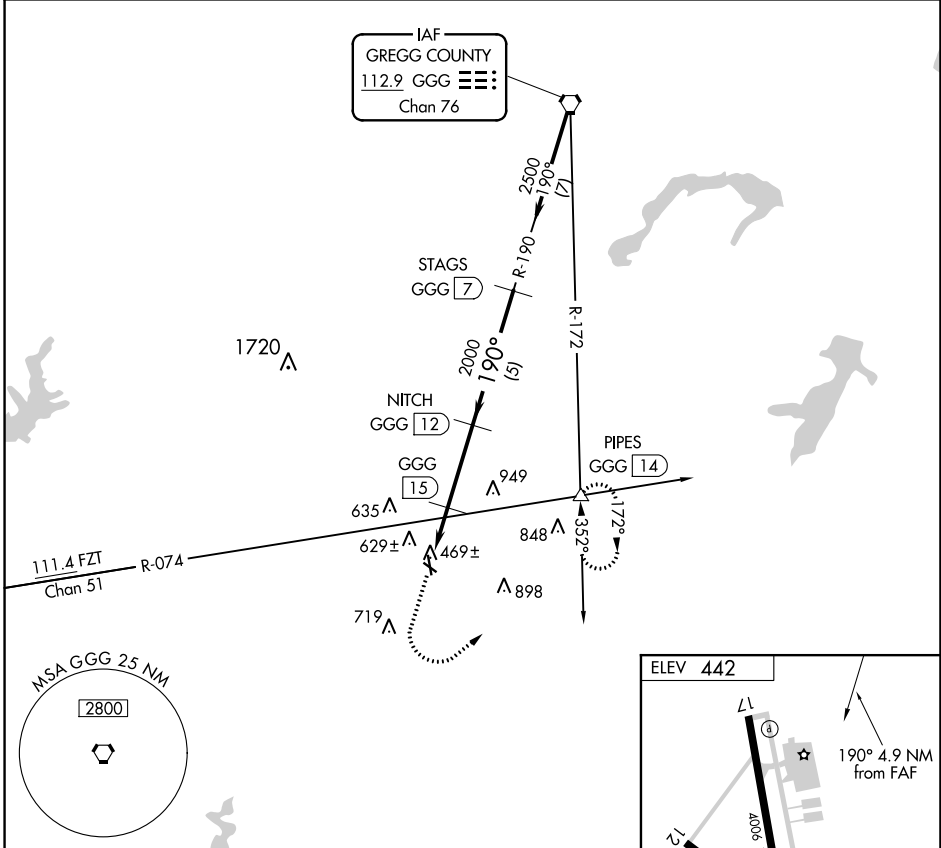
# VOR/DME-A

RUSK COUNTY (R.F.I)

**NA** When local altimeter setting not received, use Longview altimeter setting and increase all MDAs 60 feet and Circling Cat C visibility 1/4 SM. Circling Rwy 12, 17 and 30 NA at night.

MISSED APPROACH: Climb to 1800 then climbing left turn to 2500 via heading 045° and GGG R-172 to PIPES INT/14 DME and hold.

AWOS-3 <b>119,375</b>	LONGVIEW APP CON ★ <b>124,275 257,975</b>	UNICOM <b>122.8</b> (CTAF)
--------------------------	--	-------------------------------



CATEGORY	A	B	C	D
CIRCLING	1220-1 778 (800-1)	1220-1 1/4 778 (800-1 1/4)	1220-2 1/4 778 (800-2 1/4)	NA