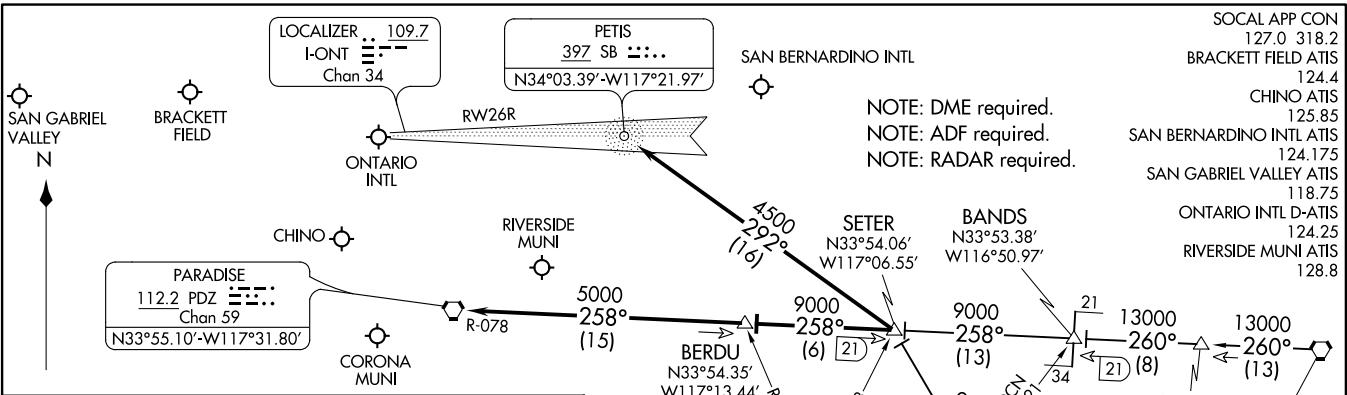


SETER FIVE ARRIVAL
(SETER:SETER5) 17AUG17

SETER FIVE ARRIVAL
(SETER:SETER5) 20310



ARRIVAL ROUTE DESCRIPTION

JULIAN TRANSITION (JLI:SETER5): From over JLI VORTAC on JLI R-315 to SETER. Thence. . . .

PALM SPRINGS TRANSITION (PSP:SETER5): From over PSP VORTAC on PSP R-260 to BANDS, then on PDZ R-078 to SETER. Thence. . . .

LANDING ONTARIO INTL

RUNWAYS 26L/R: From over SETER on SB NDB 292° course to SB NDB; expect ILS approach.

RUNWAYS 8L/R: From over SETER on PDZ R-078 to BERDU, then on PDZ R-078 to PDZ VORTAC; expect vectors to final approach course.

ALL OTHER AIRPORTS

From over SETER via PDZ R-078 to BERDU, then on PDZ R-078 to PDZ VORTAC; expect vectors to final approach course.

VERTICAL NAVIGATION PLANNING INFORMATION
Expect 12000

VERTICAL NAVIGATION PLANNING INFORMATION
Expect 16000

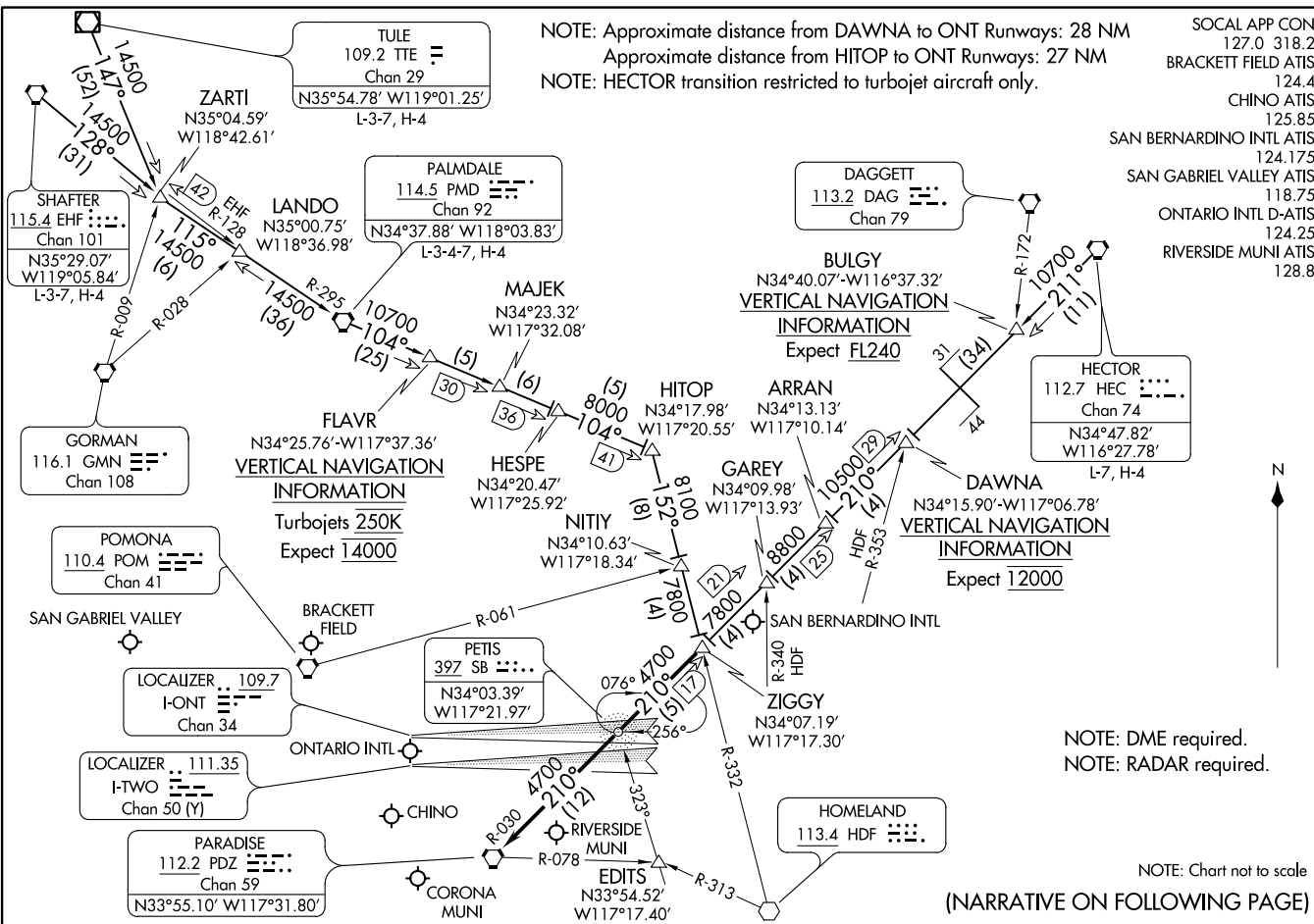
VERTICAL NAVIGATION PLANNING INFORMATION
Expect FL240

NOTE: Chart not to scale.

AL-965 (FAA)

ONTARIO, CALIFORNIA

ONTARIO, CALIFORNIA



NOTE: Approximate distance from DAWNA to ONT Runways: 28 NM
 Approximate distance from HITOP to ONT Runways: 27 NM
 NOTE: HECTOR transition restricted to turbojet aircraft only.

- SOCAL APP CON 127.0 318.2
- BRACKETT FIELD ATIS 124.4
- CHINO ATIS 125.85
- SAN BERNARDINO INTL ATIS 124.175
- SAN GABRIEL VALLEY ATIS 118.75
- ONTARIO INTL D-ATIS 124.25
- RIVERSIDE MUNI ATIS 128.8



NOTE: DME required.
 NOTE: RADAR required.

NOTE: Chart not to scale
 (NARRATIVE ON FOLLOWING PAGE)

ARRIVAL ROUTE DESCRIPTION

HECTOR TRANSITION (HEC.ZIGGY7): From over HEC VORTAC on HEC R-211 and PDZ R-030 to ZIGGY. Thence

PALMDALE TRANSITION (PMD.ZIGGY7): From over PMD VORTAC on PMD R-104 to HITOP, then on HDF R-332 to ZIGGY. Thence

SHAFTER TRANSITION (EHF.ZIGGY7): From over EHF VORTAC on EHF R-128 and PMD R-295 to PMD VORTAC, then on PMD R-104 to HITOP, then on HDF R-332 to ZIGGY. Thence

TULE TRANSITION (TTE.ZIGGY7): From over TTE VOR/DME on TTE R-147 and PMD R-295 to PMD VORTAC, then on PMD R-104 to HITOP, then on HDF R-332 to ZIGGY. Thence

LANDING ONTARIO INTL

RUNWAYS 8L/R: From over ZIGGY on PDZ R-030 to PDZ VORTAC; expect RADAR vectors to final approach course.

RUNWAYS 26 L/R: From over ZIGGY direct PETIS NDB or on PDZ R-030 to PETIS; expect RADAR vectors for ILS approach.

ALL OTHER AIRPORTS

From over ZIGGY on PDZ R-030 to PDZ VORTAC; expect RADAR vectors to final approach course.

SW-3, 05 NOV 2020 to 03 DEC 2020

SW-3, 05 NOV 2020 to 03 DEC 2020