

CENTRE, ALABAMA

AL-10343 (FAA)

19283

WAAS CH 72727 W25A	APP CRS 247°	Rwy Idg 5500 TDZE 595 Apt Elev 595
--	------------------------	---

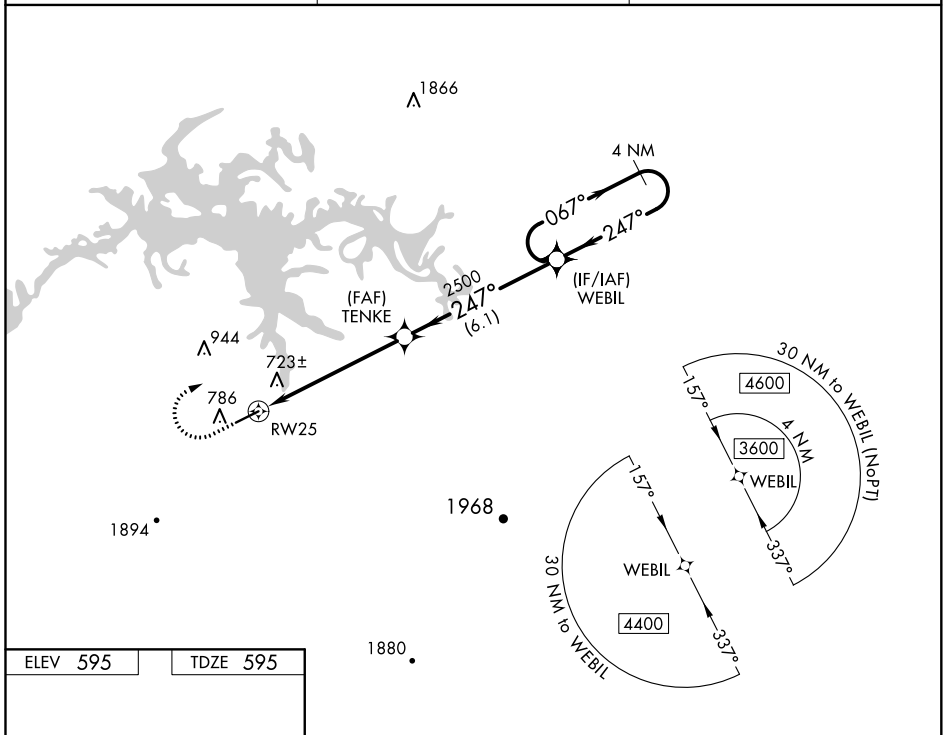
RNAV (GPS) RWY 25

CENTRE-PIEDMONT CHEROKEE COUNTY RGNL (PYP)

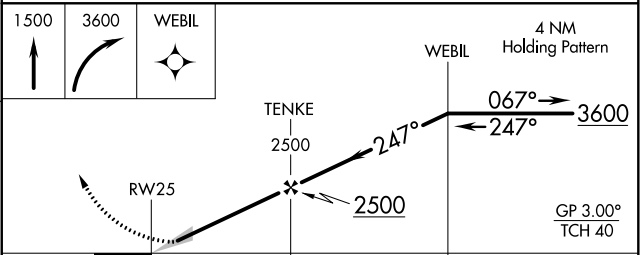
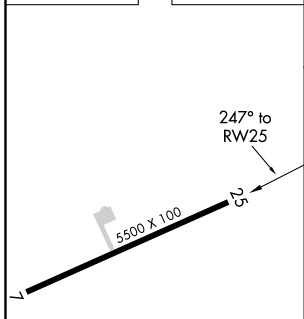
NA Baro-VNAV NA. DME/DME RNP-0.3 NA. Use Gadsden altimeter setting, when not received, use Anniston altimeter setting and increase all DA/MDA 20 feet.

MISSED APPROACH: Climb to 1500 then climbing right turn to 3600 direct WEBIL and hold.

GAD AWOS-3PT 127.825	ATLANTA CENTER 124.5 270.325	CTAF 122.9
--------------------------------	--	----------------------



ELEV 595	TDZE 595
----------	----------



CATEGORY	A	B	C	D
LPV DA		856-7/8	261 (300-7/8)	
LNAV/VNAV DA		1064-1 5/8	469 (500-1 5/8)	
LNAV MDA	1180-1	585 (600-1)	1180-1 3/4	585 (600-1 3/4)
CIRCLING	1180-1	585 (600-1)	1180-1 3/4	1180-2
			585 (600-1 3/4)	585 (600-2)

MIRL Rwy 7-25

CENTRE, ALABAMA
Amdt 1A 28MAY15

CENTRE-PIEDMONT CHEROKEE COUNTY RGNL (PYP)
34°05'N-85°37'W
RNAV (GPS) RWY 25

SE-4, 27 JAN 2022 to 24 FEB 2022

SE-4, 27 JAN 2022 to 24 FEB 2022

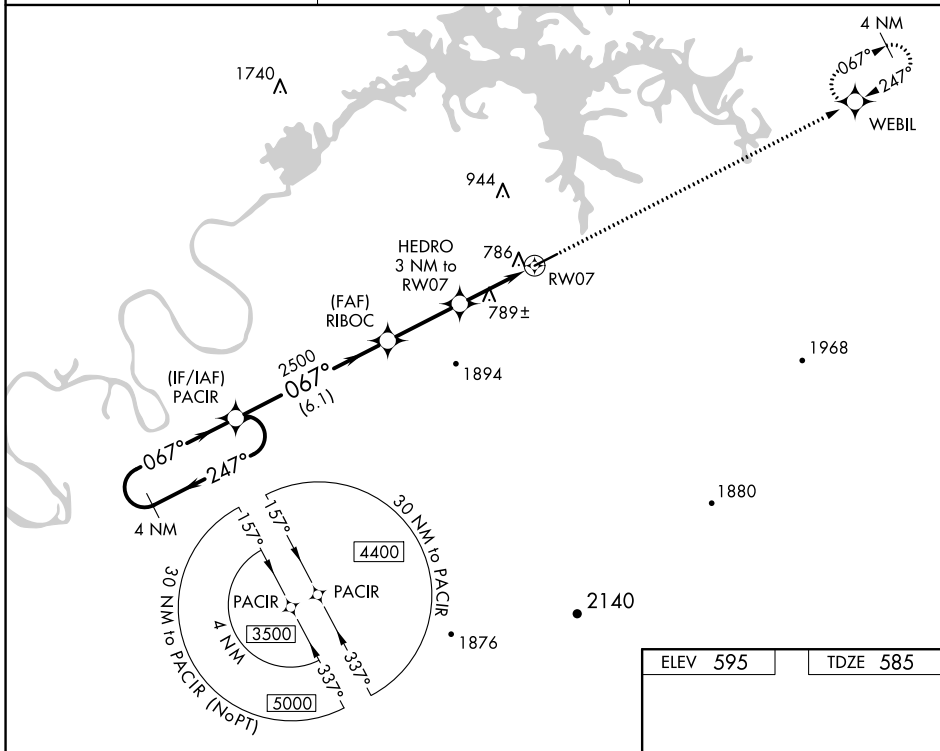
WAAS CH 48927 W07A	APP CRS 067°	Rwy Idg 5500 TDZE 585 Apt Elev 595
--------------------------	-----------------	---

RNAV (GPS) RWY 7

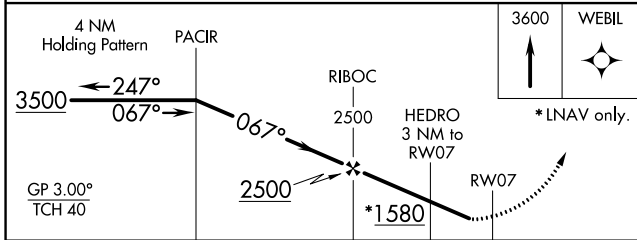
CENTRE-PIEDMONT CHEROKEE COUNTY RGNL (PYP)

<p>▼ Baro-VNAV NA, DME/DME RNP-0.3 NA. Helicopter visibility reduction below 3/4 SM NA. ▲ NA Use Gadsden altimeter setting; when not received use Anniston altimeter setting and increase all DA/MDA 20 feet; increase LPV all Cats and LNAV Cats C/D visibility 1/8 mile.</p>	<p>MISSED APPROACH: Climb to 3600 direct WEBIL and hold.</p>
---	--

GAD AWOS-3PT 127.825	ATLANTA CENTER 124.5 270.325	CTAF 122.90
--------------------------------	--	-----------------------



ELEV 595	TDZE 585
----------	----------



CATEGORY	A	B	C	D
LPV DA	896-1		311 (400-1)	
LNAV/VNAV DA	1009-1½		424 (500-1½)	
LNAV MDA	1100-1 515 (600-1)		1100-1⅓ 515 (600-1⅓)	
CIRCLING	1160-1 565 (600-1)		1160-1½ 565 (600-1½)	1160-2 565 (600-2)

MIRL Rwy 7-25

SE-4, 27 JAN 2022 to 24 FEB 2022

SE-4, 27 JAN 2022 to 24 FEB 2022