

WAAS CH <b>97540</b> <b>W24A</b>	APP CRS <b>238°</b>	Rwy Idg TDZE <b>575</b> Apt Elev <b>575</b>	<b>3396</b> <b>575</b> <b>575</b>
--	------------------------	---	---

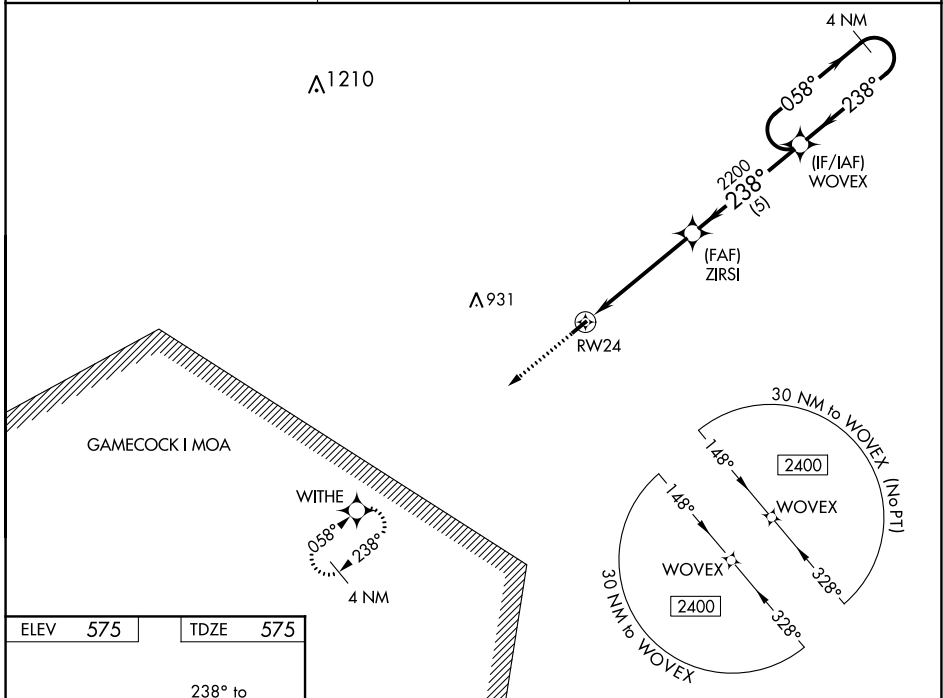
# RNAV (GPS) RWY 24

PAGELAND (PYG)

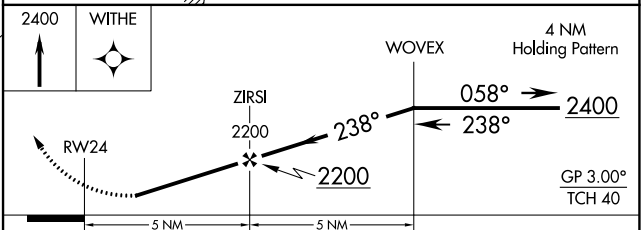
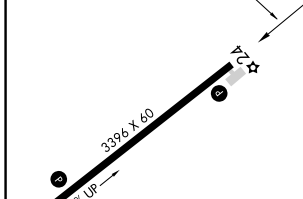
**⚠** Baro-VNAV NA. Rwy 24 helicopter visibility reduction below 3/4 SM NA. DME/DME RNP-0.3 NA. Use Charlotte-Monroe Executive altimeter setting. When Charlotte-Monroe Executive altimeter not received, use Charlotte/Douglas Intl altimeter setting and increase LPV DA to 944 feet and all visibilities 1/4 SM. Increase LNAV/VNAV DA to 986 feet and all visibilities 1/8 SM. Increase all MDA 60 feet.

**⚠** NA MISSED APPROACH: Climb to 2400 direct WITHE and hold.

EQY ASOS <b>135.775</b>	CHARLOTTE APP CON <b>120.05 307.8</b>	(CTAF) <b>122.9</b>
----------------------------	--	------------------------



ELEV <b>575</b>	TDZE <b>575</b>
-----------------	-----------------



CATEGORY	A	B	C	D
LPV DA	890-1	315 (400-1)		NA
LNAV/VNAV DA	932-1¼	357 (400-1¼)		NA
LNAV MDA	1040-1	465 (500-1)		NA
<b>C</b> CIRCLING	1100-1	525 (600-1)		NA

MIRL Rwy 6-24  
REIL Rwy 6 and 24

SE-2, 02 DEC 2021 to 30 DEC 2021

SE-2, 02 DEC 2021 to 30 DEC 2021

WAAS CH <b>56440</b> <b>W06A</b>	APP CRS <b>058°</b>	Rwy Idg TDZE Apt Elev	<b>3396</b> <b>574</b> <b>575</b>
--	------------------------	-----------------------------	---

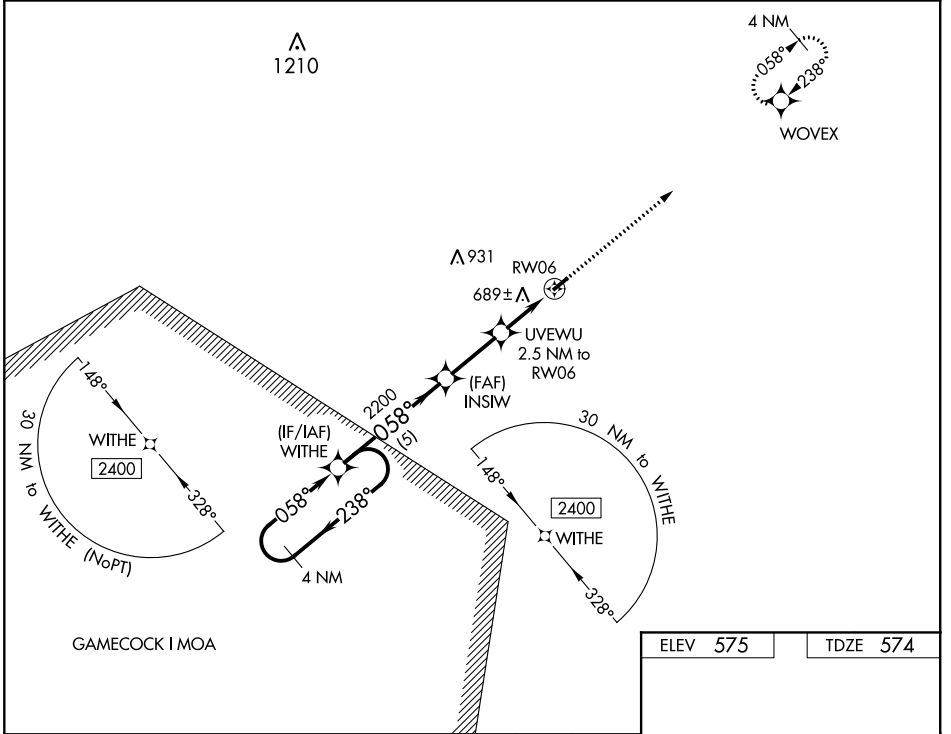
# RNAV (GPS) RWY 6

PAGELAND (PYG)

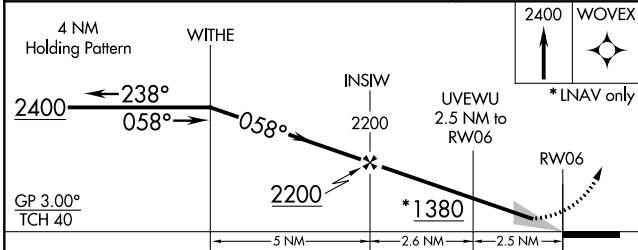
**Baro-VNAV NA. DME/DME RNP-0.3 NA. Use Charlotte-Monroe Executive altimeter setting. When Charlotte-Monroe Executive altimeter not received, use Charlotte/Douglas Intl altimeter setting and increase LPV DA to 943 feet and all visibilities 1/8 SM. Increase LNAV/VNAV DA to 1139 feet and all visibilities 1/4 SM. Increase all MDA 60 feet.**

**MISSED APPROACH:** Climb to 2400 direct WOVEX and hold.

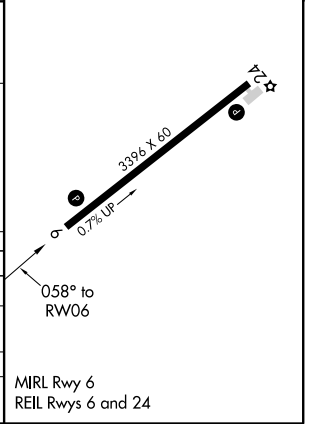
EQY ASOS <b>135.775</b>	CHARLOTTE APP CON <b>120.05 307.8</b>	(CTAF) <b>122.9</b>
----------------------------	--	------------------------



ELEV 575	TDZE 574
----------	----------



CATEGORY	A	B	C	D
LPV DA	889-1 1/8	315 (400-1 1/8)		NA
LNAV/VNAV DA	1085-1 1/8	511 (600-1 1/8)		NA
LNAV MDA	1020-1	446 (500-1)		NA
<b>CIRCLING</b>	1100-1 1/8	525 (600-1 1/8)		NA



SE-2, 02 DEC 2021 to 30 DEC 2021

SE-2, 02 DEC 2021 to 30 DEC 2021