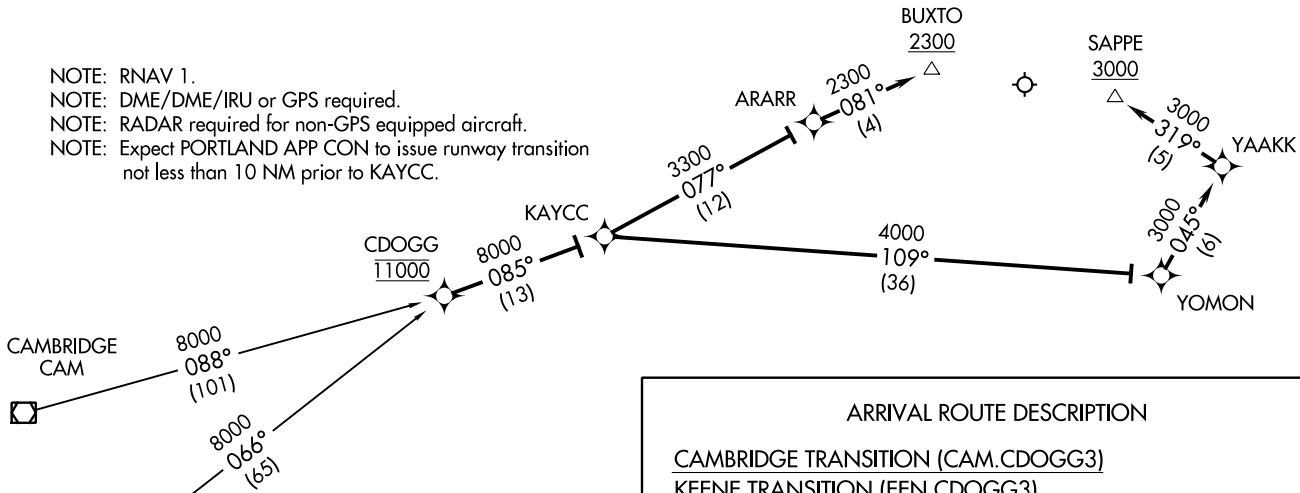


PORTLAND APP CON ★
119.75 269.35
ATIS
119.05

- NOTE: RNAV 1.
- NOTE: DME/DME/IRU or GPS required.
- NOTE: RADAR required for non-GPS equipped aircraft.
- NOTE: Expect PORTLAND APP CON to issue runway transition not less than 10 NM prior to KAYCC.



NOTE: Chart not to scale.

ARRIVAL ROUTE DESCRIPTION

CAMBRIDGE TRANSITION (CAM.CDOGG3)

KEENE TRANSITION (EEN.CDOGG3)

From CDOGG on track 085° to KAYCC.

LANDING RUNWAY 11: From KAYCC on track 077° to ARARR, then on track 081° to cross BUXTO at/above 2300. Expect ILS or LOC RWY 11.

LANDING RUNWAY 29: From KAYCC on track 109° to YOMON, then on track 045° to YAACK, then on track 319° to cross SAPPE at/above 3000. Expect ILS or LOC to RWY 29.

CDOGG THREE ARRIVAL (RNAV)
(CDOGG.CDOGG3) 10DECI5

PORTLAND, MAINE
PORTLAND INTL JETPORT (P W J)

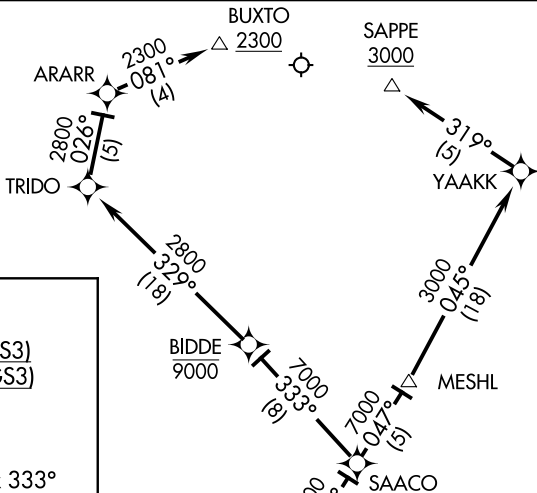
(CDOGG.CDOGG3) 20198
CDOGG THREE ARRIVAL (RNAV)

ST-329 (FAA)

PORTLAND INTL JETPORT (P W J)
PORTLAND, MAINE

SCOGS THREE ARRIVAL (RNAV)

PORTLAND APP CON ★
119.75 269.35
ATIS
119.05



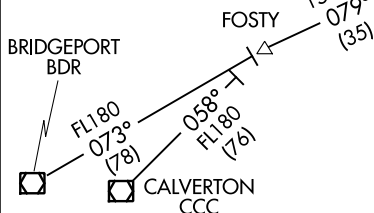
ARRIVAL ROUTE DESCRIPTION

BRIDGEPORT TRANSITION (BDR.SCOGS3)
CALVERTON TRANSITION (CCC.SCOGS3)

From SCOGS on track 048° to SAACO.

Landing Rwy 11: From SAACO on track 333° to cross BIDDE at or below 9000, then on track 329° to TRIDO, then on track 026° to ARARR, then on track 081° to cross BUXTO at or above 2300. Expect ILS or LOC Rwy 11.

Landing Rwy 29: From SAACO on track 047° to MESH, then on track 045° to YAAKK, then on track 319° to cross SAPPE at or above 3000. Expect ILS or LOC to Rwy 29.



- NOTE: RNAV 1.
- NOTE: DME/DME/IRU or GPS required.
- NOTE: RADAR required for non-GPS aircraft.
- NOTE: Expect PORTLAND APP CON to issue runway transition 10 NM prior to SAACO.

NOTE: Chart not to scale.

NE-1, 25 FEB 2021 to 25 MAR 2021

NE-1, 25 FEB 2021 to 25 MAR 2021