

LOC/DME I-PUJ 109.15 Chan 28Y	APP CRS 311°	Rwy Idg TDZE Apt Elev 5505 1283 1289
---	------------------------	--

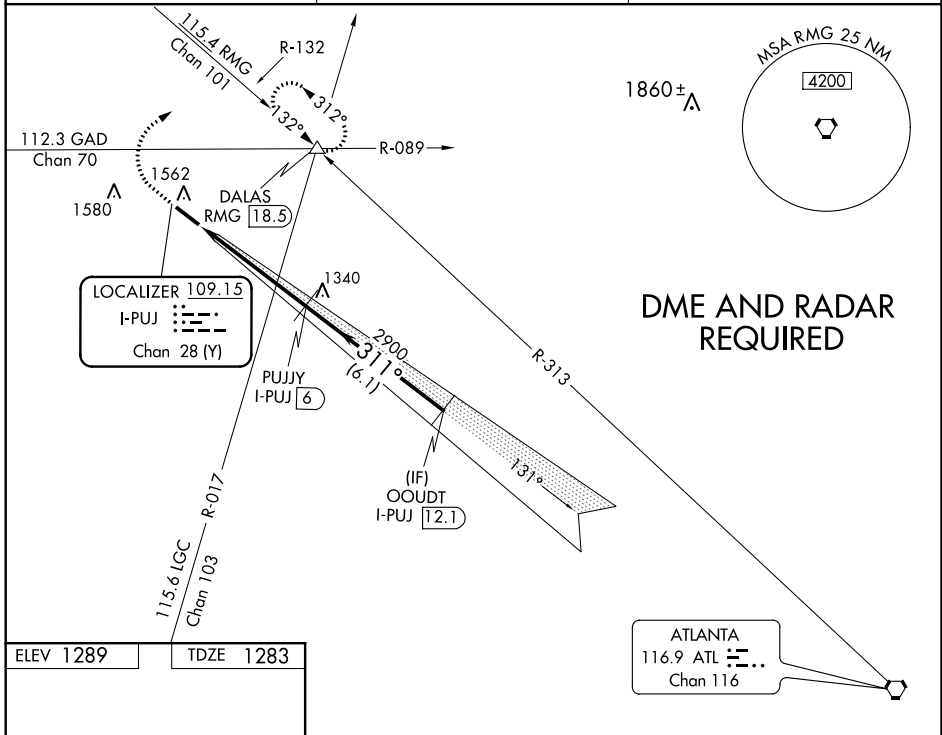
ILS or LOC/DME RWY 31

PAULDING NORTHWEST ATLANTA (PUJ)

NA VDP NA with Cartersville altimeter setting. When local altimeter setting not received, use Cartersville altimeter setting and increase all DA 106 feet and all MDA 120 feet and S-ILS 31 all Cts visibility 1/4 mile and S-LOC 31 Cat C/D and Circling Cat C/D visibilities 1/2 mile. Autopilot coupled approach NA below 1680.

MISSED APPROACH: Climb to 3000 then climbing right turn to 3600 on RMG VORTAC R-132 to DALAS INT/RMG 18.5 DME and hold.

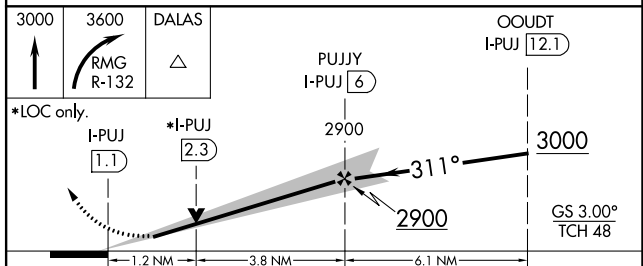
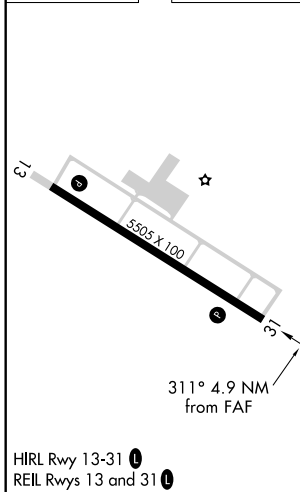
AWOS-3 126.225	ATLANTA APP CON 121.0 268.7	UNICOM 123.075 (CTAF) 0
--------------------------	---------------------------------------	--



SE-4, 06 DEC 2018 to 03 JAN 2019

SE-4, 06 DEC 2018 to 03 JAN 2019

ELEV 1289	TDZE 1283
-----------	-----------



CATEGORY	A	B	C	D
S-ILS 31	1483- ³ / ₄ 200 (200- ³ / ₄)			
S-LOC 31	1680-1 397 (400-1)		1680-1 ¹ / ₄ 397 (400-1 ¹ / ₄)	
CIRCLING	1880-1 591 (600-1)		1880-1 ¹ / ₂ 591 (600-1 ¹ / ₂) 1940-2 651 (700-2)	

WAAS CH 99720 W13A	APP CRS 131°	Rwy Idg 5505 TDZE 1289 Apt Elev 1289
--	------------------------	--

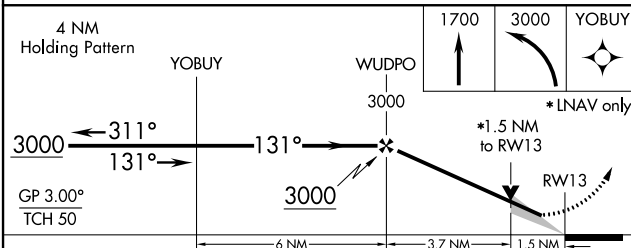
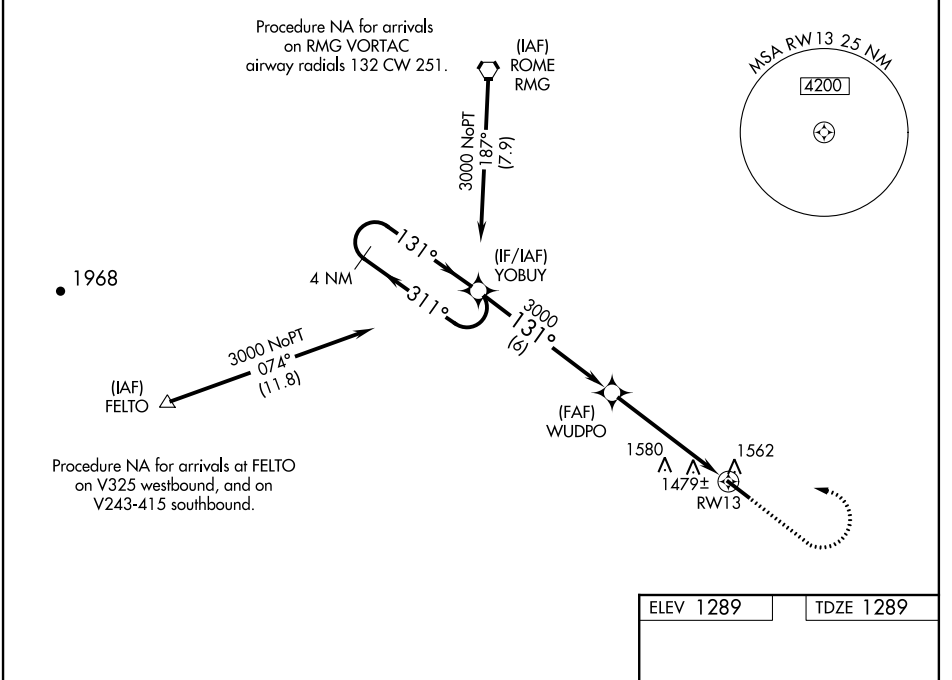
RNAV (GPS) RWY 13

PAULDING NORTHWEST ATLANTA (PUJ)

NA Baro-VNAV NA when using Cartersville altimeter setting. For uncompensated Baro-VNAV systems, LNAV/VNAV NA below -17°C (2°F) or above 35°C (95°F). DME/DME RNP-0.3 NA. When local altimeter setting not received, use Cartersville altimeter setting and increase all DA 106 feet and all MDA 120 feet; increase LPV all Cats and LNAV Cats C/D visibilities 3/8 mile, increase LNAV/VNAV all Cats and Circling Cats C/D visibilities 1/2 mile. VDP NA with Cartersville altimeter setting.

MISSED APPROACH: Climb to 1700 then climbing left turn to 3000 direct YOBUY and hold.

AWOS-3 126,225	ATLANTA APP CON 121.0 268.7	UNICOM 123,075 (CTAF)
--------------------------	---------------------------------------	---------------------------------



ELEV 1289	TDZE 1289
-----------	-----------

HIRL Rwy 13-31
REIL Rwy 13 and 31

CATEGORY	A	B	C	D
LPV DA		1539-3/4	250 (300-3/4)	
LNAV/VNAV DA		1797-13/4	508 (600-13/4)	
LNAV MDA	1820-1	531 (600-1)	1820-1 1/2	531 (600-1 1/2)
CIRCLING	1880-1	591 (600-1)	1880-1 1/2	1940-2
			591 (600-1 1/2)	651 (700-2)

SE-4, 06 DEC 2018 to 03 JAN 2019

SE-4, 06 DEC 2018 to 03 JAN 2019

WAAS CH 99511 W31A	APP CRS 311°	Rwy Idg TDZE 1283 Apt Elev 1289	5505
--	------------------------	---	-------------

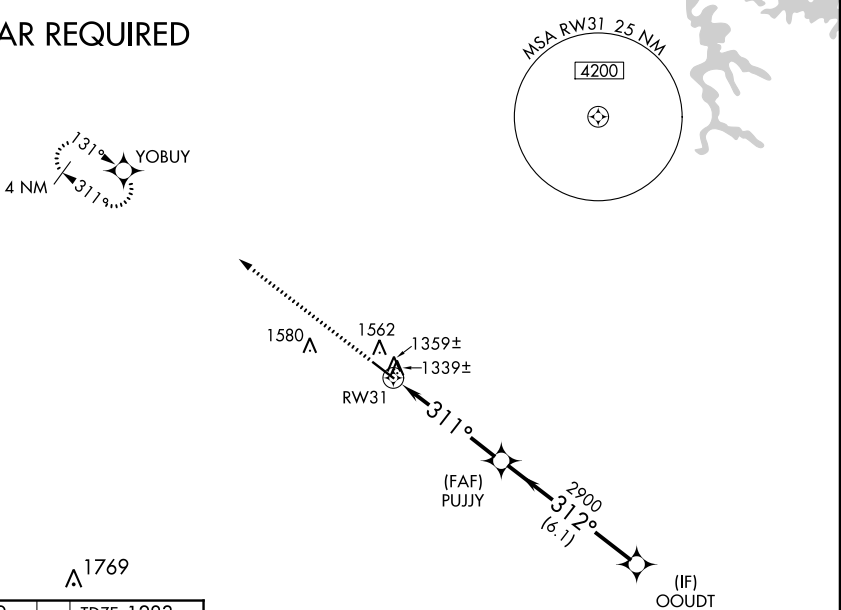
RNAV (GPS) RWY 31
PAULDING NORTHWEST ATLANTA (PUJ)

⚠ For uncompensated Baro-VNAV systems, LNAV/VNAV NA below -17°C (2°F) or above 46°C (114°F). DME/DME RNP-0.3 NA. When local altimeter setting not received, use Cartersville altimeter setting and increase all DA 106 feet and all MDA 120 feet and LPV all Cats and LNAV/VNAV all Cats and LNAV Cat C/D visibilities ¼ mile and Circling Cat C/D visibilities ½ mile. Baro-VNAV and VDP NA when using Cartersville altimeter setting.

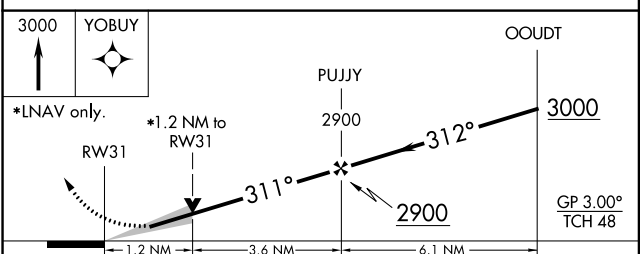
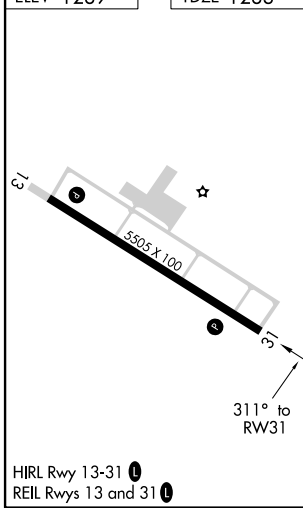
MISSED APPROACH: Climb to 3000 direct YOBUY and hold.

AWOS-3 126.225	ATLANTA APP CON 121.0 268.7	UNICOM 123.075 (CTAF) 0
--------------------------	---------------------------------------	-----------------------------------

RADAR REQUIRED



ELEV 1289	TDZE 1283
-----------	-----------



CATEGORY	A	B	C	D
LPV DA	1483-¾ 200 (200-¾)			
LNAV/VNAV DA	1635-1¼ 352 (400-1¼)			
LNAV MDA	1720-1 437 (500-1)	1720-1¼ 437 (500-1¼)	1720-1½ 437 (500-1½)	1720-1½ 437 (500-1½)
CIRCLING	1880-1 591 (600-1)	1880-1½ 591 (600-1½)	1940-2 651 (700-2)	

SE-4, 06 DEC 2018 to 03 JAN 2019

SE-4, 06 DEC 2018 to 03 JAN 2019

APP CRS 041°	Rwy Idg TDZE Apt Elev	N/A N/A 1289
------------------------	-----------------------------	---

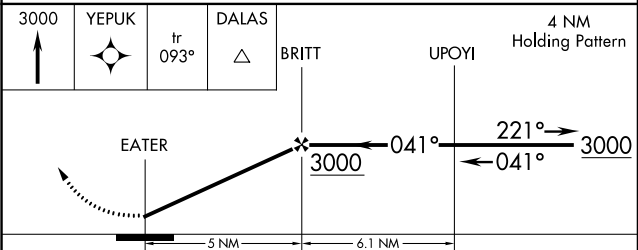
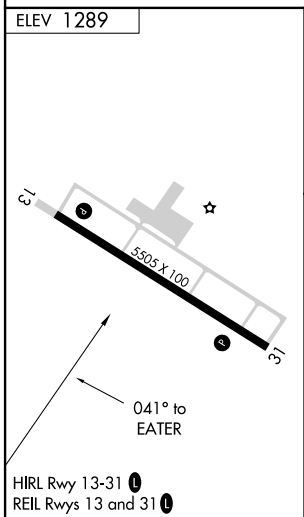
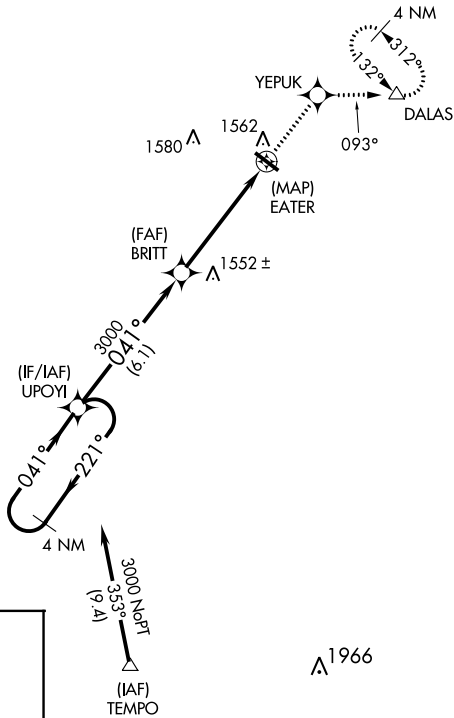
RNAV (GPS)-A

PAULDING NORTHWEST ATLANTA (PUJ)

NA DME/DME RNP-0.3 NA. When local altimeter setting not received, use Cartersville altimeter setting and increase all MDA 120 feet and Cat C/D visibilities ½ mile.

MISSED APPROACH: Climb to 3000 direct YEPUK and on track 093° to DALAS and hold.

AWOS-3 126.225	ATLANTA APP CON 121.0 268.7	UNICOM 123.075 (CTAF) 0
--------------------------	---------------------------------------	--



CATEGORY	A	B	C	D
CIRCLING	1880-1	591 (600-1)	1880-1½ 591 (600-1½)	1940-2 651 (700-2)