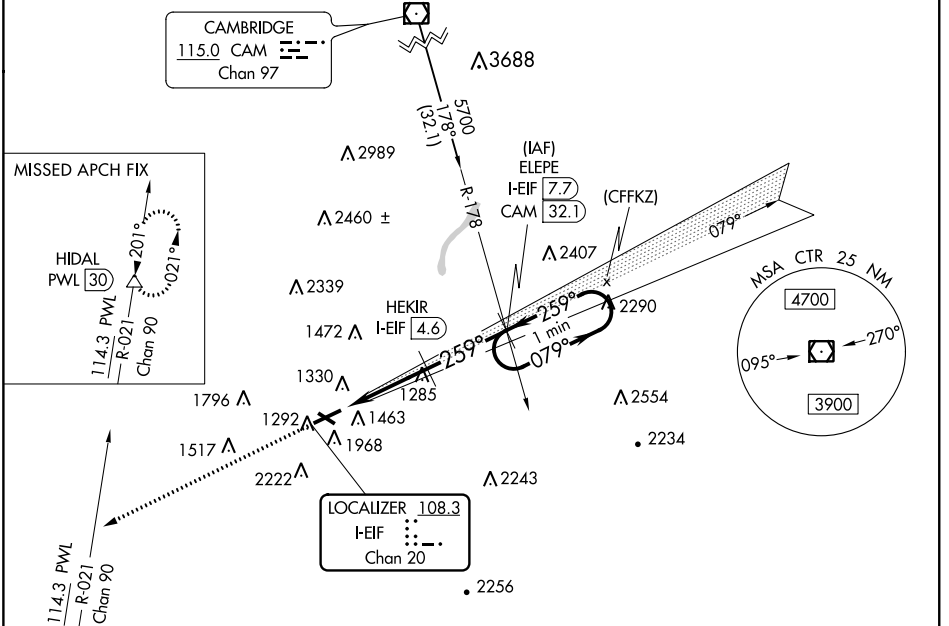


LOC/DME I-EIF 108.3 Chan 20	APP CRS 259°	Rwy Idg TDZE Apt Elev	5791 1159 1188
--	------------------------	-----------------------------	---

LOC/DME RWY 26

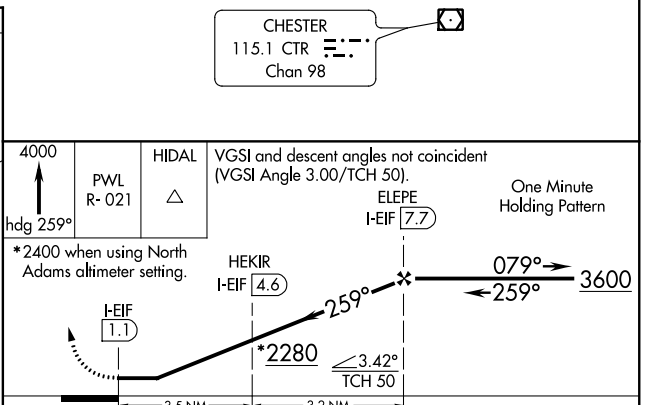
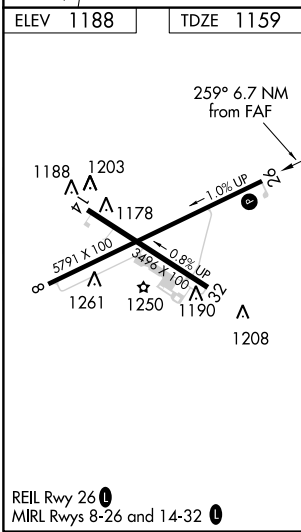
PITTSFIELD MUNI (PSF)

▽ Circling NA south of Rwy 8 and 32. Helicopter visibility reduction below 3/4 SM NA. When local altimeter setting not received, use North Adams altimeter setting and increase all MDA 120 feet and S-26 Cat B visibility 1/4 mile and S-26 Cats C/D visibility 1/2 mile. Night landing: Rwy 8 NA.	MISSED APPROACH: Climb to 4000 on heading 259° and PWL VOR/DME R-021 to HIDAL/PWL 30 DME and hold.		
ASOS 135.375	ALBANY APP CON 132.825 307.2	CLNC DEL 128.6	UNICOM 122.7 (CTAF)



NE-1, 29 MAR 2018 to 26 APR 2018

NE-1, 29 MAR 2018 to 26 APR 2018



CATEGORY	A	B	C	D
S-26	1860-1	701 (700-1)	1860-2	701 (700-2)
☐ CIRCLING	1860-1 672 (700-1)	2160-1½ 972 (1000-1½)	2400-3 1212 (1300-3)	2680-3 1492 (1500-3)

WAAS CH 42835 W26A	APP CRS 259°	Rwy Idg TDZE Apt Elev	5791 1159 1188
--	------------------------	-----------------------------	---

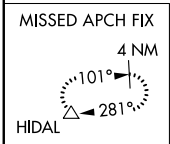
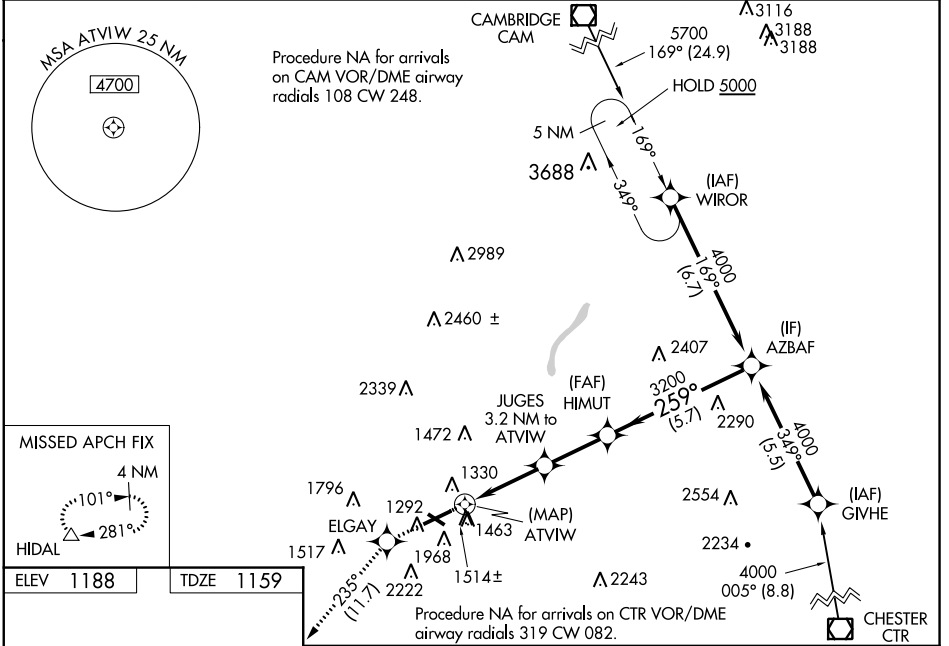
RNAV (GPS) RWY 26

PITTSFIELD MUNI (PSF)

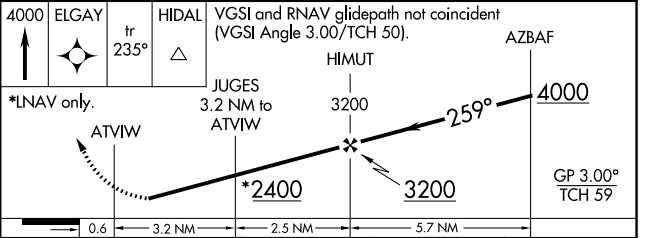
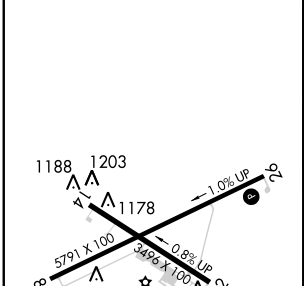
⚠ DME/DME RNP-0.3 NA. Night landing Rwy 8 NA. Circling NA south of Rws 8 and 32. When local altimeter setting not received, use North Adams altimeter setting and increase all DA 114 feet and all MDA 120 feet. Increase LPV all Cats visibility 1½ miles, LNAV/VNAV all Cats visibility ½ mile, and LNAV Cat B visibility ¼ mile. Inop table does not apply to LNAV Cat C. For inop MALSF when using North Adams altimeter setting, increase LNAV Cats C and D ½ mile. For uncompensated Baro-VNAV systems, LNAV/VNAV NA below -19°C (-2°F) or above 54°C (130°F). Baro-VNAV NA when using North Adams altimeter setting. Helicopter visibility reduction below ¼ SM NA. For inop MALSF when using North Adams altimeter setting, inop table does not apply to LPV.

⚠ MISSED APPROACH: Climb to 4000 direct ELGAY and on track 235° to HIDAL and hold.

ASOS 135.375	ALBANY APP CON 132.825 307.2	CLNC DEL 128.6	UNICOM 122.7 (CTAF) 0
------------------------	--	--------------------------	---------------------------------



ELEV 1188	TDZE 1159
-----------	-----------



CATEGORY	A	B	C	D
LPV DA		1956-2½	797 (800-2½)	
LNAV/VNAV DA		1888-2¼	729 (700-2¼)	
LNAV MDA	2060-1	901 (900-1)	2060-2½	901 (900-2½)
C CIRCLING	2060-1¼ 872 (900-1¼)	2160-1½ 972 (1000-1½)	2400-3 1212 (1300-2)	2680-3 1492 (1500-3)

NE-1, 29 MAR 2018 to 26 APR 2018

NE-1, 29 MAR 2018 to 26 APR 2018

WAAS CH 93935 W08A	APP CRS 079°	Rwy Idg TDZE Apt Elev	5791 1188 1188
--	------------------------	-----------------------------	---

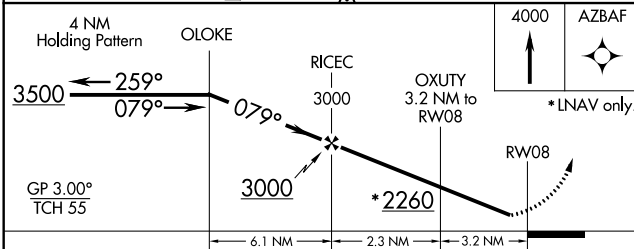
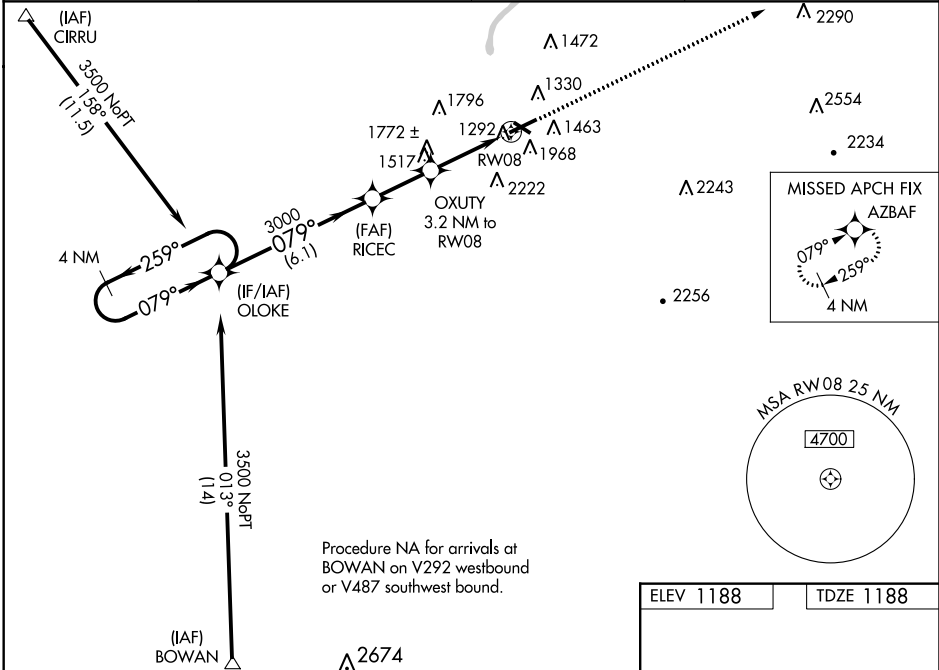
RNAV (GPS) RWY 8

PITTSFIELD MUNI (PSF)

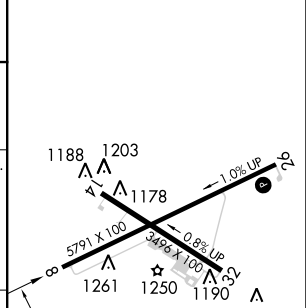
⚠ Baro-VNAV NA when using North Adams altimeter setting. For uncompensated Baro-VNAV systems, LNAV/VNAV NA below -20°C (-4°F) or above 54°C (130°F). DME/DME RNP-0.3 NA. When local altimeter setting not received use North Adams altimeter setting and increase all DA 114 feet and all MDA 120 feet, increase LPV visibility all Cats ¼ mile, LNAV/VNAV visibility all Cats 1 mile, and LNAV Cat A visibility ¼ mile. Visibility reduction by helicopters below 1 SM NA. Night landing: Rwy 8 NA. Circling NA south of Rws 8 and 32.

MISSED APPROACH:
Climb to 4000 direct AZBAF and hold.

ASOS 135.375	ALBANY APP CON 132.825 307.2	CLNC DEL 128.6	UNICOM 122.7 (CTAF) 📻
------------------------	--	--------------------------	--



ELEV 1188	TDZE 1188
-----------	-----------



CATEGORY	A	B	C	D
LPV DA	1475-1		287 (300-1)	
LNAV/VNAV DA	2072-3		884 (900-3)	
LNAV MDA	2000-1 812 (900-1)	2000-1¼ 812 (900-1¼)	2000-2½	812 (900-2½)
📻 CIRCLING	2000-1¼ 812 (900-1¼)	2160-1½ 972 (1000-1½)	2400-3 1212 (1300-3)	2680-3 1492 (1500-3)

REIL Rwy 26 **📻**
MIRL Rws 8-26 and 14-32 **📻**

NE-1, 29 MAR 2018 to 26 APR 2018

NE-1, 29 MAR 2018 to 26 APR 2018