

WAAS CH <b>77834</b> <b>W02A</b>	APP CRS <b>023°</b>	Rwy Idg TDZE Apt Elev	<b>5000</b> <b>805</b> <b>812</b>
--	------------------------	-----------------------------	---

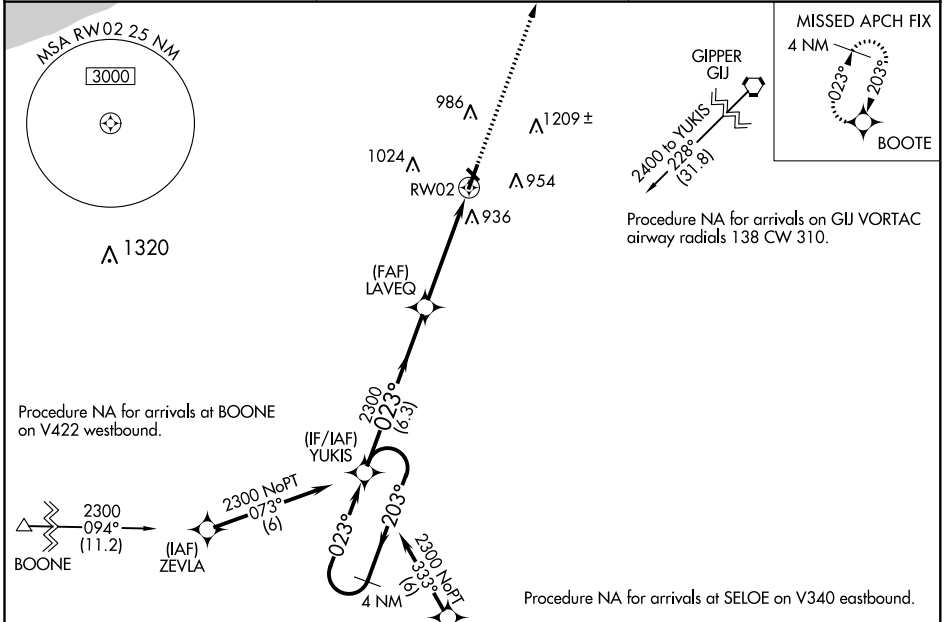
# RNAV (GPS) RWY 2

LA PORTE MUNI (PPO)

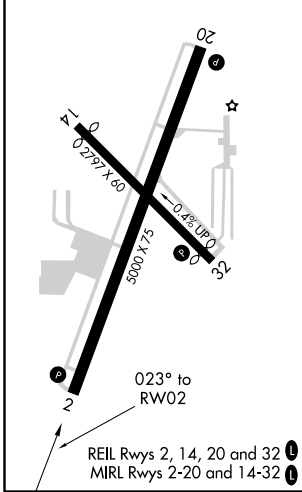
**⚠** Baro-VNAV NA when using South Bend altimeter setting. For uncompensated Baro-VNAV systems, LNAV/VNAV NA below -16°C (4°F) or above 54°C (130°F). DME/DME RNP-0.3 NA. When local altimeter setting not received, use South Bend altimeter setting and increase all DA 49 feet, and all MDA 60 feet; increase LNAV/VNAV all Cats and LNAV Cat C/D visibility ¼ mile. Helicopter visibility reduction below ¾ SM NA. Circling Rwy 14, 32 NA at night.

**⚠** MISSED APPROACH: Climb to 2500 direct BOOTE and hold.

AWOS-3 <b>119.825</b>	SOUTH BEND APP CON * <b>132.05 257.8</b>	UNICOM <b>123.0</b> (CTAF) <b>0</b>
--------------------------	---	--



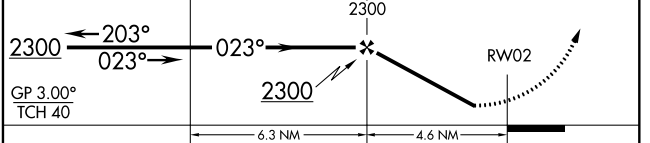
ELEV 812	TDZE 805
----------	----------



4 NM Holding Pattern

VGSI and RNAV glidepath not coincident (VGSI Angle 3.00/TCH 24).

2500 BOOTE



CATEGORY	A	B	C	D
LPV DA		1067-1	262 (300-1)	
LNAV/VNAV DA		1220-1 3/8	415 (500-1 3/8)	
LNAV MDA	1220-1	415 (500-1)	1220-1 1/8	415 (500-1 1/8)
<input checked="" type="checkbox"/> CIRCLING	1320-1	508 (600-1)	1560-2 1/4 748 (800-2 1/4)	1560-2 1/2 748 (800-2 1/2)

EC-2, 19 MAY 2022 to 16 JUN 2022

EC-2, 19 MAY 2022 to 16 JUN 2022

WAAS CH <b>87034</b> <b>W20A</b>	APP CRS <b>203°</b>	Rwy Idg TDZE Apt Elev	<b>5000</b> <b>812</b> <b>812</b>
--	------------------------	-----------------------------	---

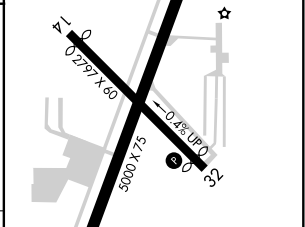
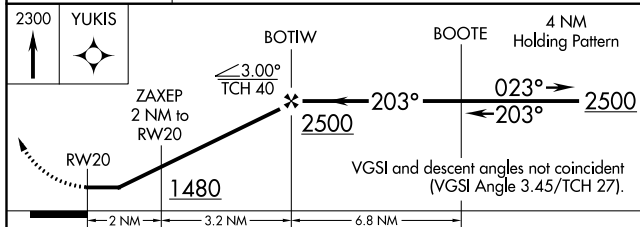
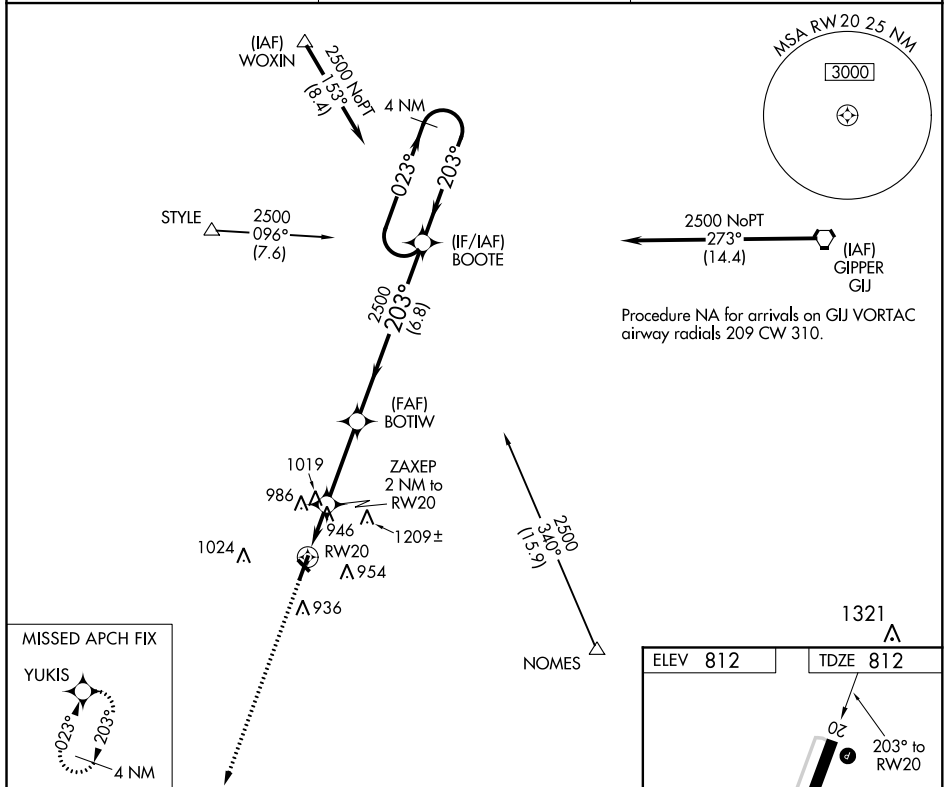
# RNAV (GPS) RWY 20

LA PORTE MUNI (PPO)

**⚠** DME/DME RNP-0.3 NA. When local altimeter setting not received, use South Bend altimeter setting and increase all MDA 60 feet; increase LP Cat C/D and LNAV Cat C/D visibility 1/8 mile. Helicopter visibility reduction below 3/4 SM NA. Circling Rwy 14, 32 NA at night.

**⚠** MISSED APPROACH: Climb to 2300 direct YUKIS and hold.

AWOS-3 <b>119.825</b>	SOUTH BEND APP CON ★ <b>132.05 257.8</b>	UNICOM <b>123.0</b> (CTAF) <b>📞</b>
--------------------------	---	--



CATEGORY	A	B	C	D
LP MDA	1200-1	388 (400-1)	1200-1 1/8	388 (400-1 1/8)
LNAV MDA	1280-1	468 (500-1)	1280-1 3/8	468 (500-1 3/8)
<b>C</b> CIRCLING	1320-1	508 (600-1)	1560-2 1/4 748 (800-2 1/4)	1560-2 1/2 748 (800-2 1/2)

REIL Rws 2, 14, 20 and 32 **📞**  
MIRL Rws 2-20 and 14-32 **📞**