

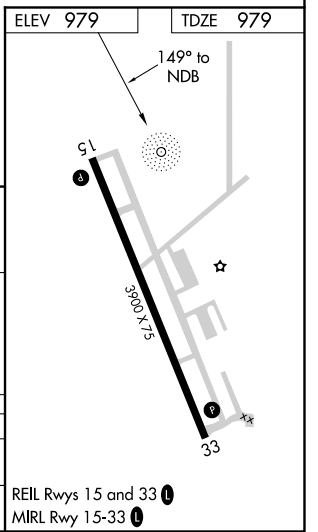
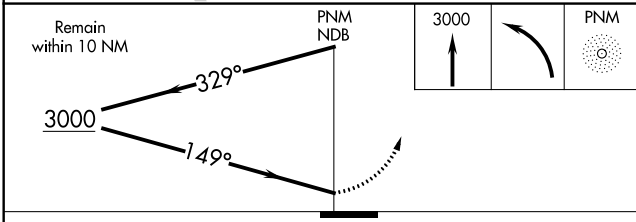
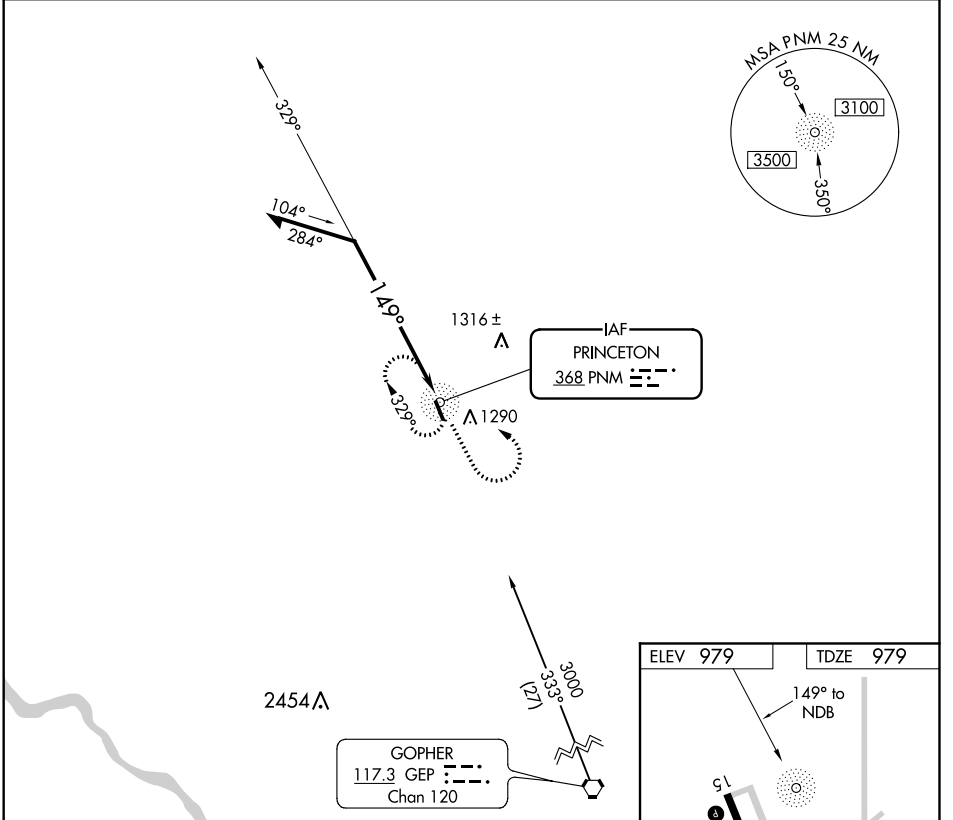
NDB PNM	APP CRS	Rwy Idg	3900
<b>368</b>	<b>149°</b>	TDZE	979
		Apt Elev	979

# NDB RWY 15

PRINCETON MUNI (PNM)

**MISSED APPROACH:** Climb to 3000 then left turn direct PNM NDB and hold.

AWOS-3 <b>119.025</b>	MINNEAPOLIS CENTER <b>121.05 397.9</b>	PRINCETON RADIO <b>121.5 122.2 243.0 255.4</b>	UNICOM <b>123.0 (CTAF)</b>
--------------------------	---	---	-------------------------------



CATEGORY	A	B	C	D
S-15	1560-1	581 (600-1)	1560-1½ 581 (600-1½)	NA
CIRCLING	1640-1	661 (700-1)	1640-1¾ 661 (700-1¾)	NA

NC-1, 29 MAR 2018 to 26 APR 2018

NC-1, 29 MAR 2018 to 26 APR 2018

APP CRS	Rwy Idg	<b>3900</b>
<b>159°</b>	TDZE	<b>980</b>
	Apt Elev	<b>980</b>

# RNAV (GPS) RWY 15

PRINCETON MUNI (PNM)

**▽** Rwy 15 Helicopter visibility reduction below 3/4 SM NA.  
DME/DME RNP-0.3 NA.

MISSED APPROACH: Climbing right turn to 3000 direct GOLFF and hold.

AWOS-3  
**119.025**

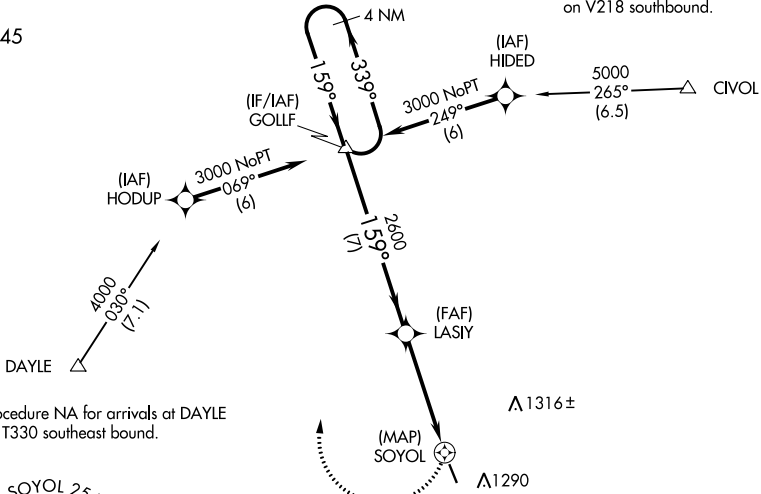
MINNEAPOLIS CENTER  
**121.05 397.9**

PRINCETON RADIO  
**121.5 122.2**  
**243.0 255.4**

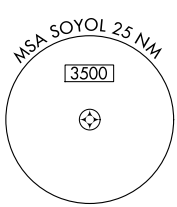
UNICOM  
**123.0 (CTAF) 0**

Procedure NA for arrivals at CIYOL on V218 southbound.

**△ 2245**



Procedure NA for arrivals at DAYLE on T330 southeast bound.

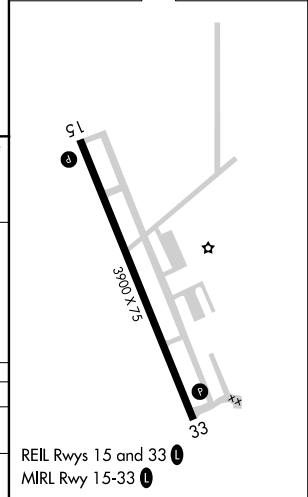
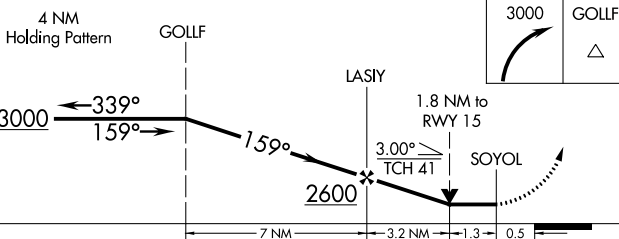


$\triangle$  1316±

$\triangle$  1290

Final approach course offset 4.12°

ELEV 980	TDZE 980
----------	----------



CATEGORY	A	B	C	D
LNVA MDA	1600-1	620 (700-1)	1600-1 3/4 620 (700-1 3/4)	NA
CIRCLING	1640-1	660 (700-1)	1640-1 3/4 660 (700-1 3/4)	NA

NC-1, 29 MAR 2018 to 26 APR 2018

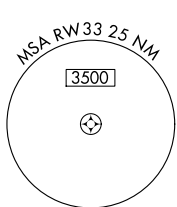
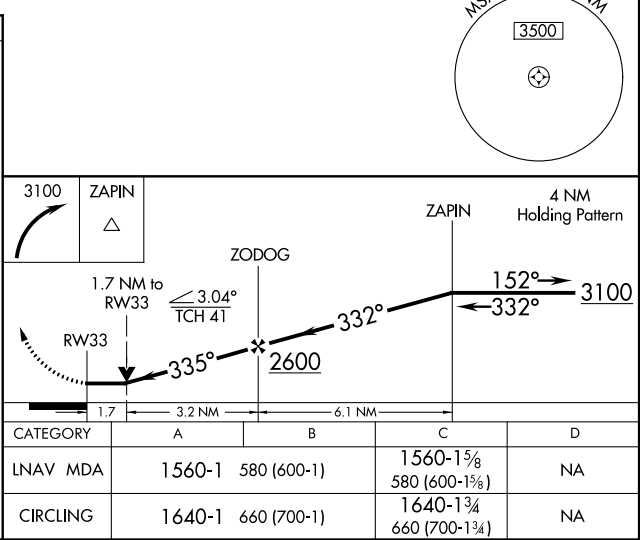
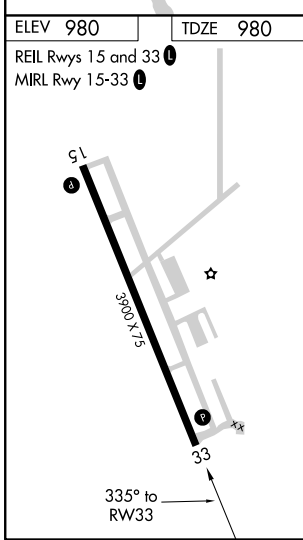
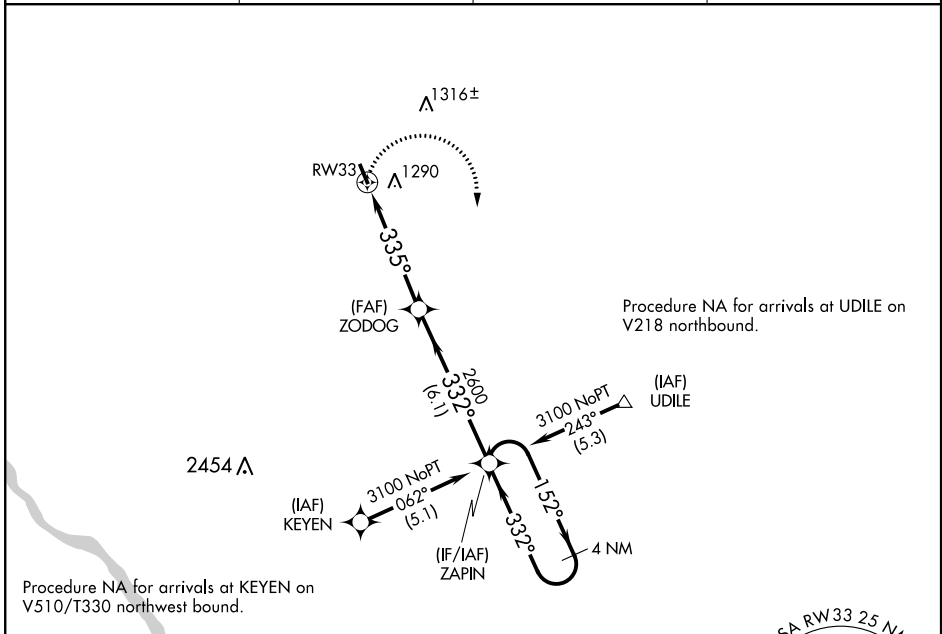
NC-1, 29 MAR 2018 to 26 APR 2018

APP CRS <b>335°</b>	Rwy Idg TDZE Apt Elev	<b>3900</b> <b>980</b> <b>980</b>
------------------------	-----------------------------	---

# RNAV (GPS) RWY 33

PRINCETON MUNI (PNM)

<p><b>▼</b> Rwy 33 helicopter visibility reduction below 3/4 SM NA. DME/DME RNP-0.3 NA.</p>		<p>MISSED APPROACH: Climbing right turn to 3100 direct ZAPIN and hold.</p>	
AWOS-3 <b>119.025</b>	MINNEAPOLIS CENTER <b>121.05 397.9</b>	PRINCETON RADIO <b>121.5 122.2</b> <b>243.0 255.4</b>	UNICOM <b>123.0</b> (CTAF) <b>📻</b>



NC-1, 29 MAR 2018 to 26 APR 2018

NC-1, 29 MAR 2018 to 26 APR 2018