

WAAS CH 45907 W18A	APP CRS 183°	Rwy Idg TDZE Apt Elev	5001 663 663
--	------------------------	-----------------------------	---

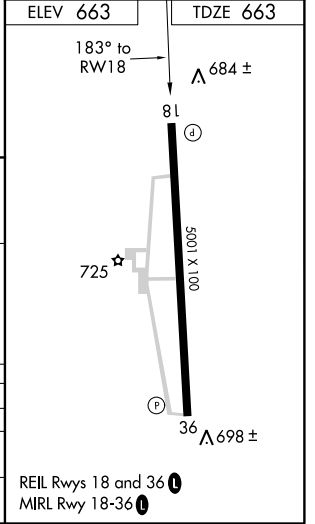
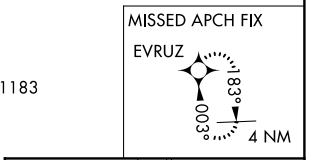
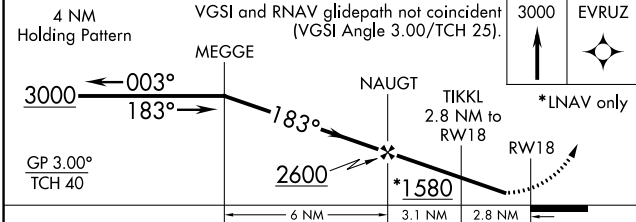
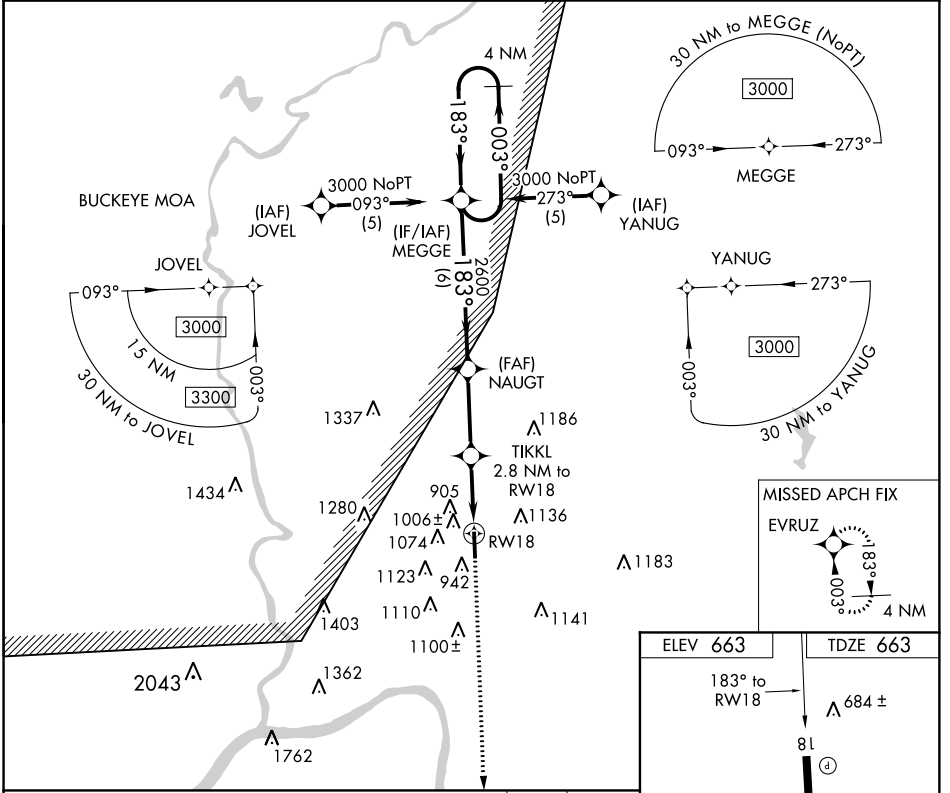
RNAV (GPS) RWY 18

GREATER PORTSMOUTH RGNL (PMH)

▽ DME/DME RNP-0.3 NA. Visibility reduction by helicopters NA.
△ NA When local altimeter setting not received, use Huntington altimeter setting and increase all DA 96 feet and all MDA 100 feet and LPV visibility ¼ mile all Cats, LNAV Cat C, D visibility ½ mile and Circling Cat B, D visibility ¼ mile, Cat C visibility ½ mile.

MISSED APPROACH: Climb to 3000 direct EVRUZ and hold.

AWOS-3 125.175	HUNTINGTON APP CON 128.4 270.1	UNICOM 122.8 (CTAF) 0
--------------------------	--	---------------------------------



CATEGORY	A	B	C	D
LPV DA	1010-1¼ 347 (400-1¼)			
LNAV MDA	1260-1 597 (600-1)	1260-1½ 597 (600-1½)	1260-1¾ 597 (600-1¾)	
CIRCLING	1320-1 657 (700-1)	1380-1 717 (800-1)	1380-2 717 (800-2)	1440-2½ 777 (800-2½)

EC-2. 01 MAR 2018 to 29 MAR 2018

EC-2. 01 MAR 2018 to 29 MAR 2018

WAAS CH 70408 W36A	APP CRS 003°	Rwy Idg TDZE Apt Elev	5001 662 663
--	------------------------	-----------------------------	---

RNAV (GPS) RWY 36

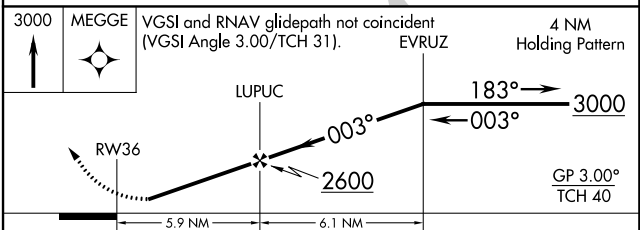
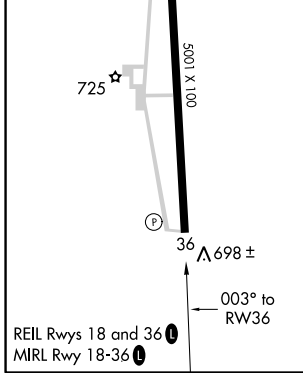
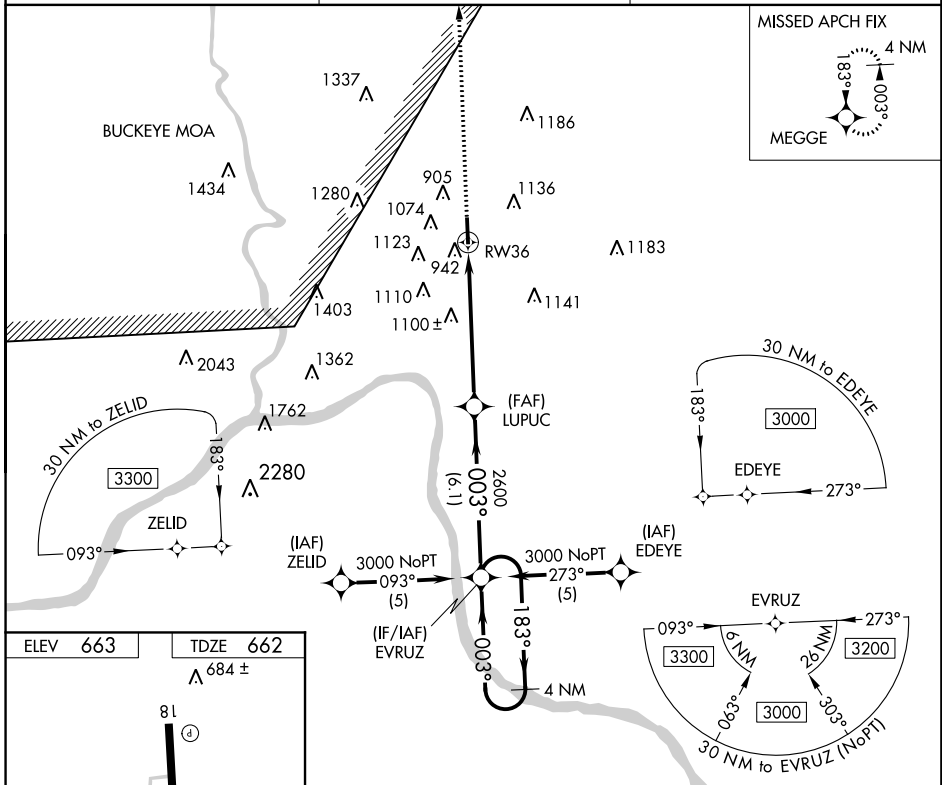
GREATER PORTSMOUTH RGNL (PMH)

▼ When local altimeter setting not received, use Huntington altimeter setting and increase all DA 96 feet and all MDA 100 feet and LPV visibility ¼ mile all Cats, LNAV Cat B visibility ¼ mile, Cat C, D visibility ½ mile, and Circling Cat B visibility ¼ mile, Cat C visibility ½ mile and Cat D visibility ¼ mile. Visibility reduction by helicopters NA. DME/DME RNP-0.3 NA.

▲ NA MISSED APCH FIX

MEGGE Climb to 3000 direct MEGGE and hold.

AWOS-3 125.175	HUNTINGTON APP CON 128.4 270.1	UNICOM 122.8 (CTAF) 0
--------------------------	--	---------------------------------



CATEGORY	A	B	C	D
LPV DA	912-1 250 (300-1)			
LNAV MDA	1400-1	738 (800-1)	1400-2 738 (800-2)	1400-2½ 738 (800-2½)
CIRCLING	1400-1	737 (800-1)	1400-2 737 (800-2)	1440-2½ 777 (800-2½)

EC-2, 01 MAR 2018 to 29 MAR 2018

EC-2, 01 MAR 2018 to 29 MAR 2018

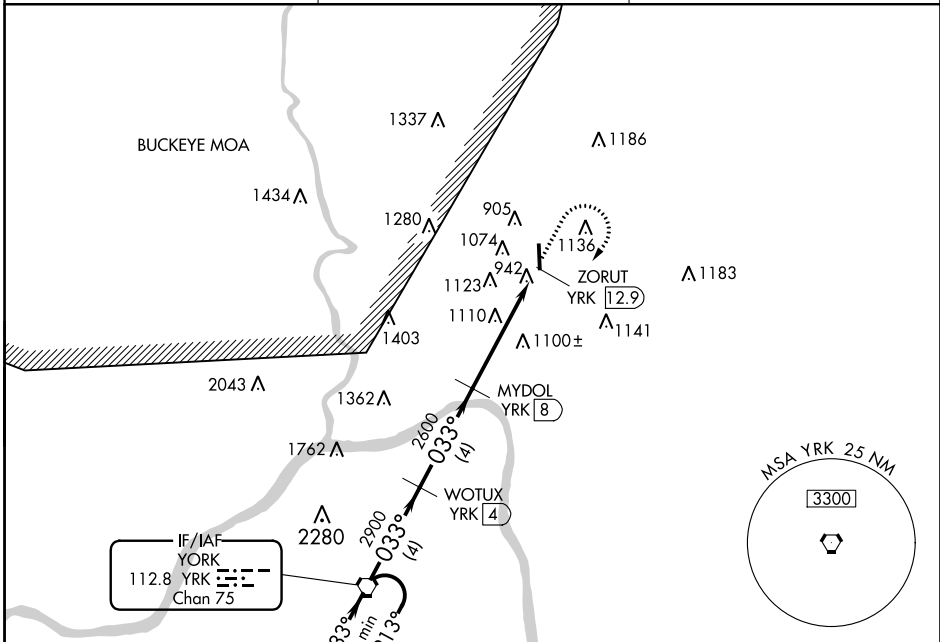
VORTAC YRK 112.8 Chan 75	APP CRS 033°	Rwy Idg TDZE Apt Elev N/A N/A 663
---------------------------------------	------------------------	---

VOR/DME-A
GREATER PORTSMOUTH RGNL (PMH)

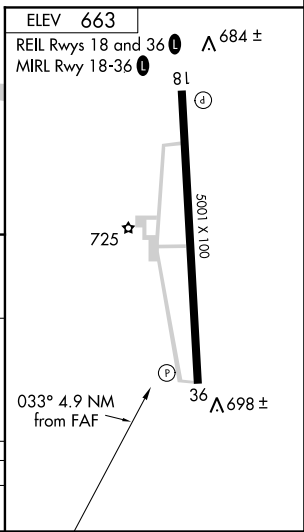
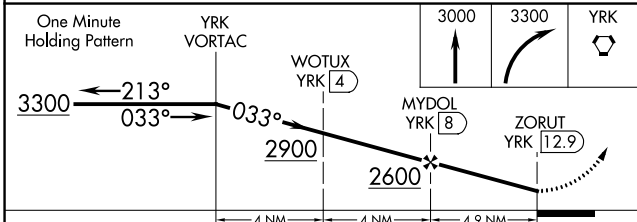
When local altimeter setting not received, use Huntington altimeter setting and increase all MDA 100 feet and increase Cat B, D visibility 1/4 mile, Cat C visibility 1/2 mile.

MISSED APPROACH: Climb to 3000 then climbing right turn to 3300 direct YRK VORTAC and hold.

AWOS-3 125.175	HUNTINGTON APP CON 128.4 270.1	UNICOM 122.8 (CTAF)
--------------------------	--	-------------------------------



NoPT for arrivals on YRK VORTAC airway radials 246 CW 291.



CATEGORY	A	B	C	D
CIRCLING	1380-1 717 (800-1)		1380-2 717 (800-2)	1440-2 1/2 777 (800-2 1/2)

EC-2. 01 MAR 2018 to 29 MAR 2018

EC-2. 01 MAR 2018 to 29 MAR 2018