

WAAS CH 78304 W21A	APP CRS 206°	Rwy Idg 5001 TDZE 485 Apt Elev 485
--	------------------------	--

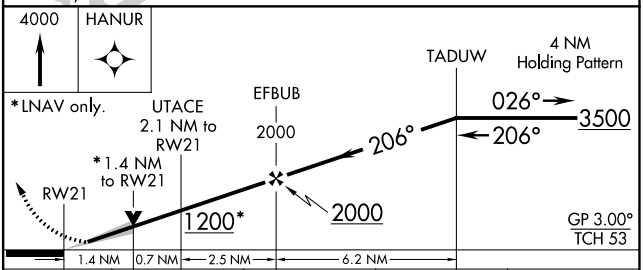
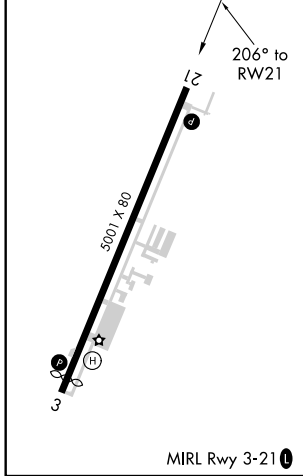
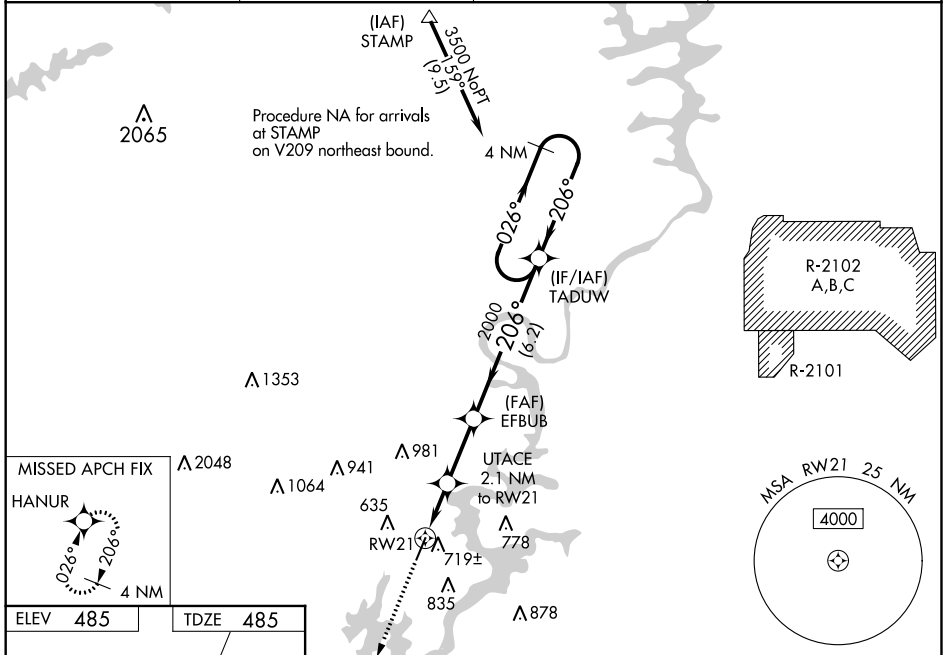
RNAV (GPS) RWY 21

ST CLAIR COUNTY (PLR)

⚠ DME/DME RNP-0.3 NA. When local altimeter setting not received, use Anniston altimeter setting and increase LPV DA to 799 feet and all Cats visibility to 1, increase LNAV/VNAV DA to 964 feet and all visibilities to 1½, increase all MDA 80 feet and LNAV Cat C/D to 1½ and Circling Cat C to 2½ and Cat D to 3. For uncompensated Baro-VNAV systems, LNAV/VNAV NA below -15°C (5°F) or above 54°C (130°F). Baro-VNAV and VDP NA when using Anniston altimeter setting.

MISSED APPROACH:
Climb to 4000 direct HANUR and hold, continue climb-in-hold to 4000.

AWOS-3P 119.625	BIRMINGHAM APP CON 123.8 256.8	GCO 121.725	UNICOM 123.05 (CTAF) 📻
---------------------------	--	-----------------------	---



CATEGORY	A	B	C	D
LPV DA		735-¾	250 (300-¾)	
LNAV/VNAV DA		900-1¾	415 (500-1¾)	
LNAV MDA	980-1	495 (500-1)	980-1¾	495 (500-1¾)
CIRCLING	1180-1	695 (700-1)	1240-2¼ 755 (800-2¼)	1340-2¾ 855 (900-2¾)

SE-4, 24 MAY 2018 to 21 JUN 2018

SE-4, 24 MAY 2018 to 21 JUN 2018

WAAS CH 70540 W03A	APP CRS 026°	Rwy Idg TDZE Apt Elev	4771 484 485
--	------------------------	-----------------------------	---

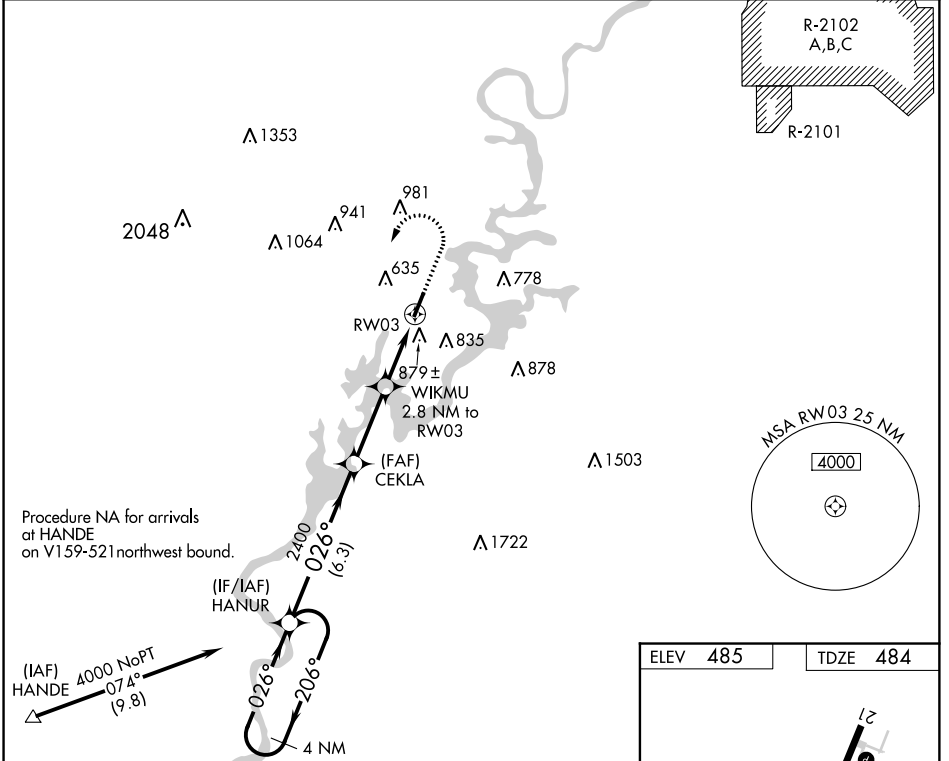
RNAV (GPS) RWY 3

ST CLAIR COUNTY (PLR)

⚠ DME/DME RNP-0.3 NA. VDP NA when using Anniston altimeter setting. Rwy 3, helicopter visibility reduction below 3/4 SM NA. When local altimeter setting not received, use Anniston altimeter setting and increase all DA 63 feet and all visibility 1/4 SM, increase all MDA 80 feet and LNAV Cat C/D visibility 1/8 SM and Circling Cat C/D 1/4 SM.

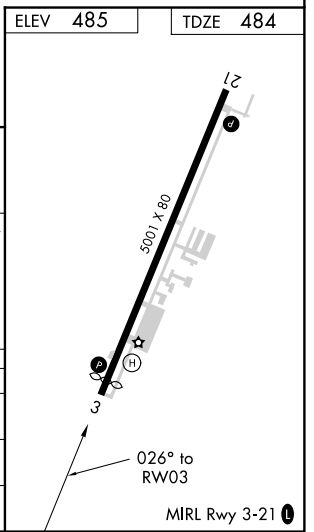
MISSED APPROACH: Climb to 1200, then climbing left turn to 4000 direct HANUR and hold, continue climb-in-hold to 4000.

AWOS-3P 119.625	BIRMINGHAM APP CON 123.8 256.8	GCO 121.725	UNICOM 123.05 (CTAF) 0
---------------------------	--	-----------------------	----------------------------------



4 NM Holding Pattern HANUR	VGSI and descent angles not coincident (VGSI Angle 3.00/TCH 53).	1200	4000	HANUR
4000	← 206°	026° →	026°	*LNAV only.
GP 3.10° TCH 52	2400	1440*	2400	
	← 6.3 NM	← 2.9 NM	← 0.9 NM	← 1.9 NM

CATEGORY	A	B	C	D
LPV DA		835-1 1/8	351 (400-1 1/8)	
LNAV MDA	1140-1	656 (700-1)	1140-1 7/8	656 (700-1 1/8)
CIRCLING	1180-1	695 (700-1)	1240-2 1/4 755 (800-2 1/4)	1340-2 3/4 855 (900-2 3/4)



SE-4, 24 MAY 2018 to 21 JUN 2018

SE-4, 24 MAY 2018 to 21 JUN 2018