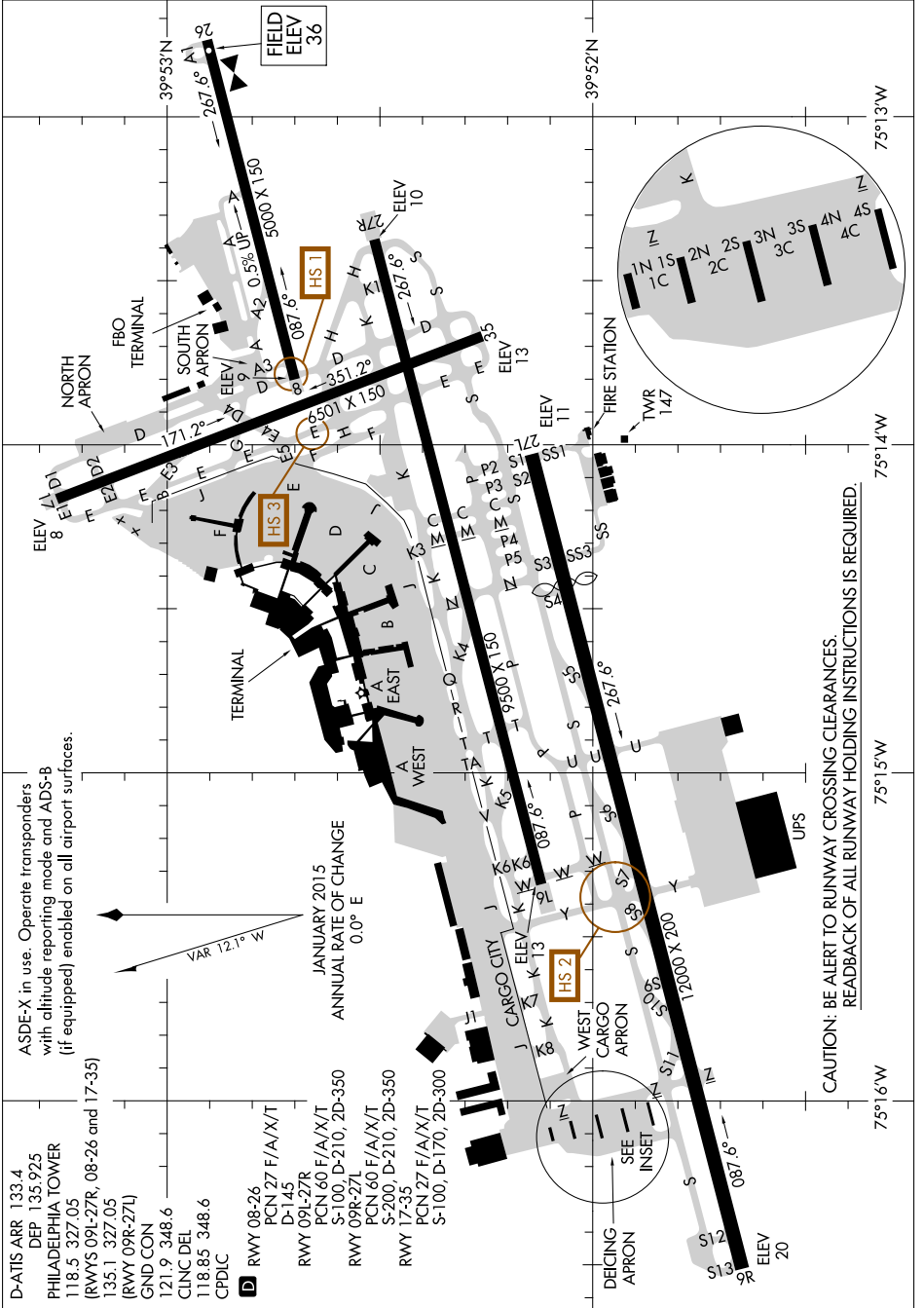


# AIRPORT DIAGRAM

AL-320 (FAA)

PHILADELPHIA INTL (PHL)  
PHILADELPHIA, PENNSYLVANIA

NE-4, 19 JUL 2018 to 16 AUG 2018



CAUTION: BE ALERT TO RUNWAY CROSSING CLEARANCES.  
READBACK OF ALL RUNWAY HOLDING INSTRUCTIONS IS REQUIRED.

# AIRPORT DIAGRAM

PHILADELPHIA, PENNSYLVANIA  
PHILADELPHIA INTL (PHL)

NE-4, 19 JUL 2018 to 16 AUG 2018