

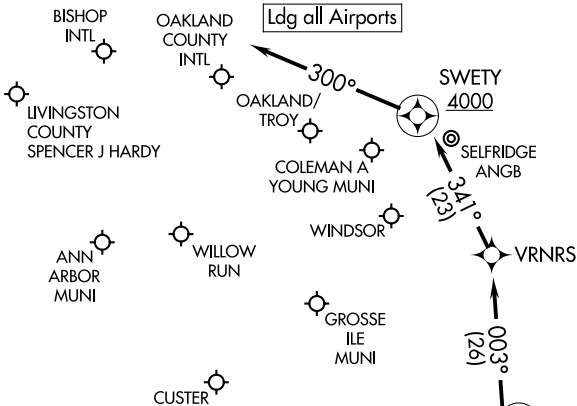
FOREY TWO ARRIVAL (RNAV)
(FOREY.FOREY2) 100CT19

(FOREY.FOREY2) 19283
FOREY TWO ARRIVAL (RNAV)

AL-5052 (FAA)

PONTIAC, MICHIGAN

ANN ARBOR MUNI ATIS
134.55
BISHOP INTL ATIS
133.15
COLEMAN A YOUNG MUNI ATIS
124.875
OAKLAND COUNTY INTL ATIS
125.025
WILLOW RUN ATIS
127.425
SELFRIDGE ANGB ATIS
125.325 270.1
DETROIT APP CON
134.3 284.0



NOTE: RADAR required.
NOTE: RNAV 1.
NOTE: DME/DME/IRU or GPS required.

NOTE: Chart not to scale.

ARRIVAL ROUTE DESCRIPTION

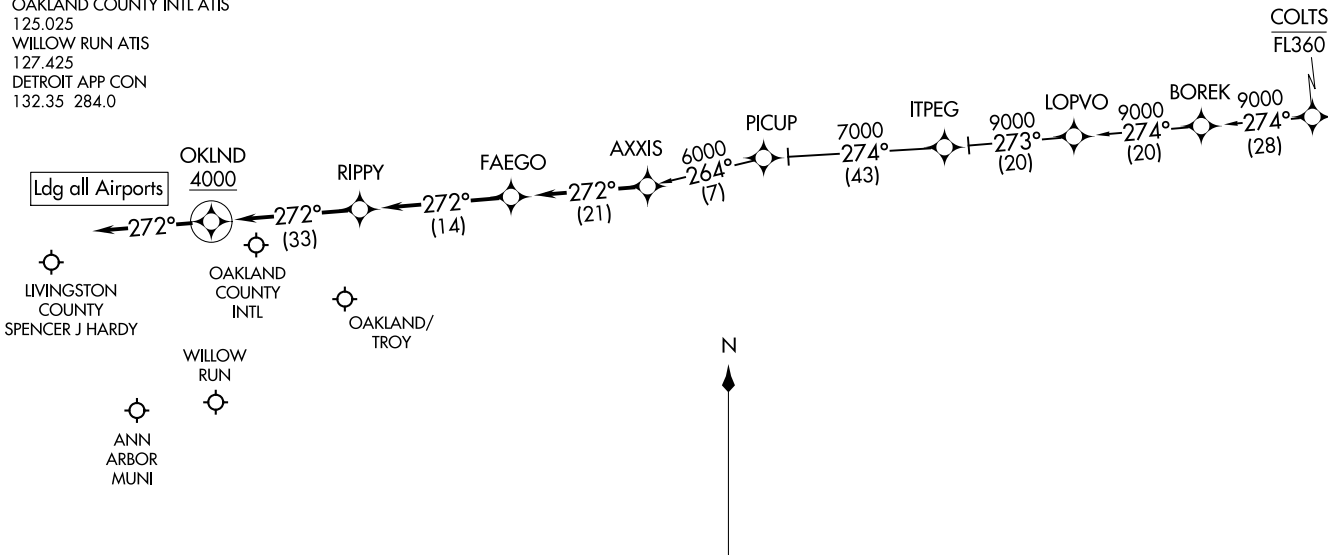
BOBCT TRANSITION (BOBCT.FOREY2)
KOZAR TRANSITION (KOZAR.FOREY2)
WWSHR TRANSITION (WWSHR.FOREY2)

LANDING ALL AIRPORTS: From FOREY on track 003° to VRNRS, then on track 341° to cross SWETY at or above 4000, then on track 300°. Expect RADAR vectors to final approach course.

PONTIAC, MICHIGAN

OKLND ONE ARRIVAL (RNAV)
(AXXIS, OKLND1) 24MAY18

ANN ARBOR MUNI ATIS
134.55
OAKLAND COUNTY INTL ATIS
125.025
WILLOW RUN ATIS
127.425
DETROIT APP CON
132.35 284.0



ARRIVAL ROUTE DESCRIPTION

COLTS TRANSITION (COLTS.OKLND1):
PICUP TRANSITION (PICUP.OKLND1):

LANDING ALL AIRPORTS: From AXXIS on track 272° to FAEGO, then on track 272° to RIPPY, then on track 272° to cross OKLND at or above 4000, then on track 272°. Expect RADAR vectors to final approach course.

NOTE: RADAR required.
NOTE: RNAV 1.
NOTE: DME/DME/IRU or GPS required.

NOTE: Chart not to scale.

PONTIAC, MICHIGAN

(AXXIS, OKLND1) 19115
OKLND ONE ARRIVAL (RNAV)

AL-5052 (FAA)

PONTIAC, MICHIGAN

PETTE TWO ARRIVAL (RNAV)

PONTIAC, MICHIGAN

ANN ARBOR MUNI ATIS
134.55
COLEMAN A YOUNG MUNI ATIS
124.875
OAKLAND COUNTY INTL ATIS
125.025
WILLOW RUN ATIS
127.425
SELFRIDGE ANGB ATIS
125.325 270.1
DETROIT APP CON
118.95 284.0

LIVINGSTON COUNTY
SPENCER J HARDY

OAKLAND COUNTY
INTL

SELFRIDGE
ANGB

SYREN
4000

Ldg all Airports

NAPOLEON

ANN
ARBOR
MUNI

WILLOW
RUN

WINDSOR

CLUSTER

GROSSE
ILE
MUNI

HOSSA

5000
089°
(33)

10 NM

24°

PETTE

HAZIT

5000
061°
(21)

HEVYD

10000
031°
(38)

10000
356°
(69)

TORRR

QBURT

10000
045°
(31)

BGLRI

10000
045°
(30)

WWODD

10000
077°
(24)

- NOTE: RADAR required.
- NOTE: RNAV 1.
- NOTE: DME/DME/IRU or GPS required.
- NOTE: Caution: Parachute jumping 6 NM northeast of PETTE WAYPOINT, 3 NM radius of NAPOLEON AIRPORT (3NP) at or below 17999 (SR-SS).
- NOTE: QBURT TRANSITION: Do not file, to be assigned by ATC only.

NOTE: Chart not to scale.

ARRIVAL ROUTE DESCRIPTION

HOSSA TRANSITION (HOSSA.PETTE2):

QBURT TRANSITION (QBURT.PETTE2):

TORRR TRANSITION (TORRR.PETTE2):

WWODD TRANSITION (WWODD.PETTE2):

LANDING CYQG, KONZ, KARB, KYIP, KTF, KDET: From PETTE on track 072° to cross SYREN at or above 4000, then on track 071°. Expect RADAR vectors to final approach course.

LANDING KPTK, KMTC, KOZW, KYLL: From PETTE on track 072° to cross SYREN at or above 4000, then on track 025°. Expect RADAR vectors to final approach course.

PETTE TWO ARRIVAL (RNAV)

PONTIAC, MICHIGAN

EC-1, 02 JAN 2020 to 30 JAN 2020

EC-1, 02 JAN 2020 to 30 JAN 2020

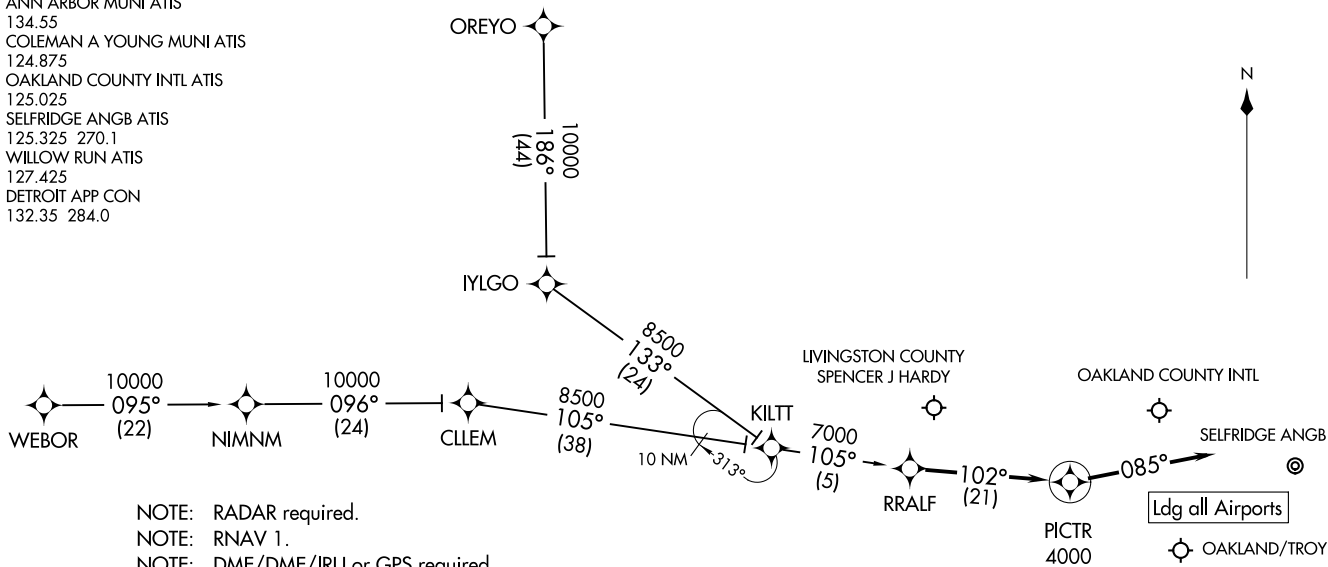
RRALF TWO ARRIVAL (RNAV)
(RRALF, RRALF2) 100CT19

(RRALF, RRALF2) 19283
RRALF TWO ARRIVAL (RNAV)

AL-5052 (FAA)

PONTIAC, MICHIGAN

ANN ARBOR MUNI ATIS
134.55
 COLEMAN A YOUNG MUNI ATIS
124.875
 OAKLAND COUNTY INTL ATIS
125.025
 SELFRIDGE ANGB ATIS
125.325 270.1
 WILLOW RUN ATIS
127.425
 DETROIT APP CON
132.35 284.0



- NOTE: RADAR required.
- NOTE: RNAV 1.
- NOTE: DME/DME/IRU or GPS required.
- NOTE: CLLEM TRANSITION: Do not file, to be assigned by ATC only.

ARRIVAL ROUTE DESCRIPTION

- CLLEM TRANSITION (CLLEM.RRALF2)
- OREYO TRANSITION (OREYO.RRALF2)
- WEBOR TRANSITION (WEBOR.RRALF2)

LANDING ALL AIRPORTS: From RRALF on track 102° to cross PICTR at or above 4000, then on track 085°. Expect RADAR vectors to final approach course.

NOTE: Chart not to scale.

PONTIAC, MICHIGAN