

WAAS CH 56528 W23A	APP CRS 230°	Rwy Idg 3741 TDZE 1041 Apt Elev 1041
--	------------------------	---

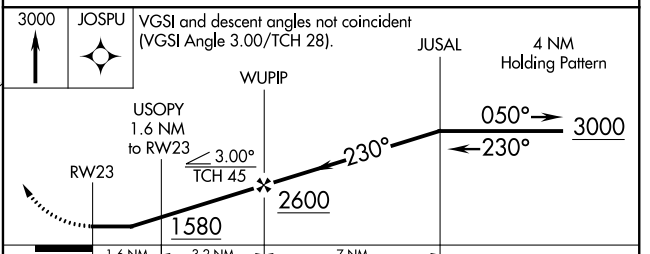
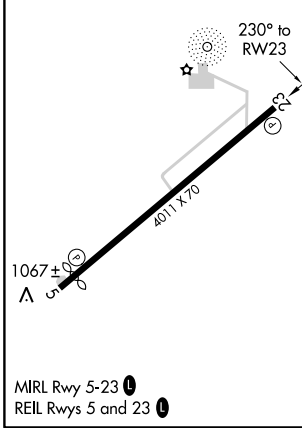
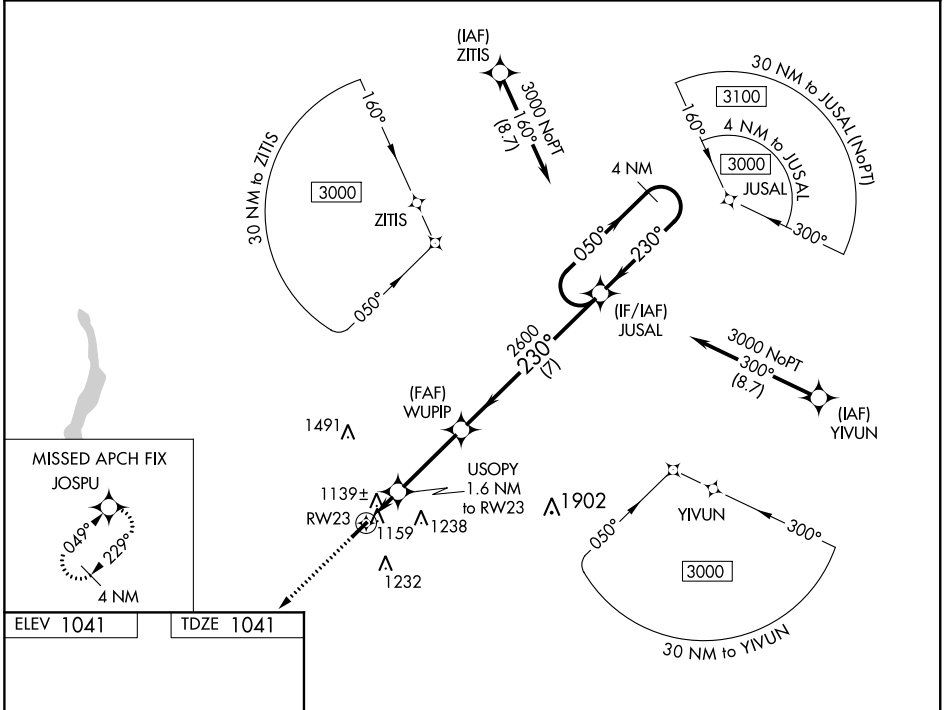
RNAV (GPS) RWY 23

MIAMI UNIVERSITY (OXD)

▼ When VGSI inop, Circling Rwy 5 NA at night. When VGSI inop, Straight-in/Circling Rwy 23 procedure NA at night. DME/DME RNP-0.3 NA. Visibility reduction by helicopters NA. When local altimeter setting not received, use Covington altimeter setting and increase all MDA 100 feet, increase LP Cat C visibility 3/8 mile, increase LNAV and Circling Cat C visibility 1/4 mile.

MISSED APPROACH: Climb to 3000 direct JOSPU and hold.

AWOS-3PT 118.625	CINCINNATI APP CON 121.0 254.25	UNICOM 122.8 (CTAF)	122.9 0
----------------------------	---	-------------------------------	----------------



CATEGORY	A	B	C	D
LP MDA	1400-1		359 (400-1)	NA
LNAV MDA	1420-1	379 (400-1)	1420-1½ 379 (400-1½)	NA
CIRCLING	1460-1 419 (500-1)	1500-1 459 (500-1)	1600-1½ 559 (600-1½)	NA

EC-2, 11 AUG 2022 to 08 SEP 2022

EC-2, 11 AUG 2022 to 08 SEP 2022

WAAS CH 49228 W05A	APP CRS 050°	Rwy Idg TDZE Apt Elev	3741 1041 1041
--	------------------------	-----------------------------	---

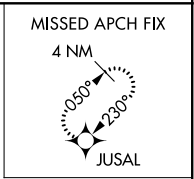
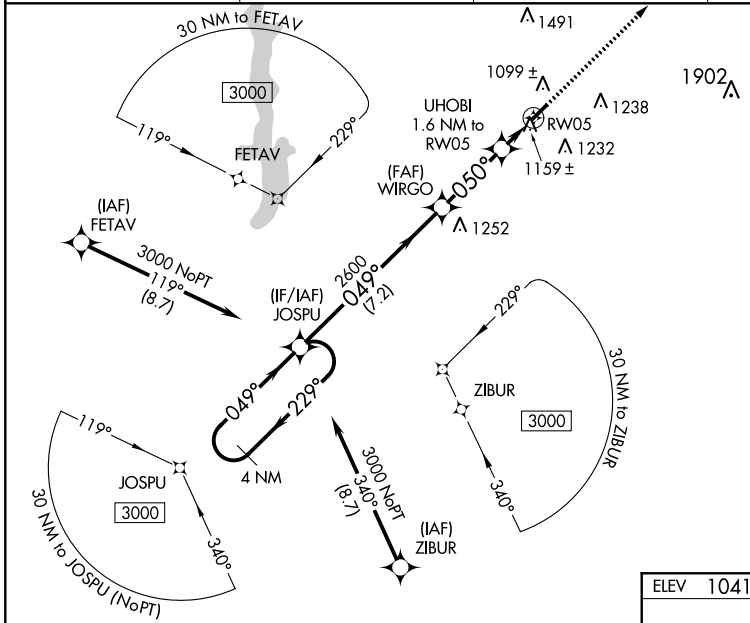
RNAV (GPS) RWY 5

MIAMI UNIVERSITY (OXD)

▼ When VGSI inop, Circling Rwy 23 NA at night. Baro-VNAV NA when using Covington altimeter setting. When VGSI inop, Straight-in/Circling Rwy 5 procedure NA at night. DME/DME RNP-0.3 NA. Visibility reduction by helicopters NA. When local altimeter setting not received, use Covington altimeter setting and increase all DA 84 feet and all MDA 100 feet, increase LPV all Cats visibility 1/8 mile, increase LNAV/VNAV all Cats visibility 1/4 mile, increase LNAV Cat C visibility 3/8 mile and increase Circling Cat C visibility 1/4 mile.

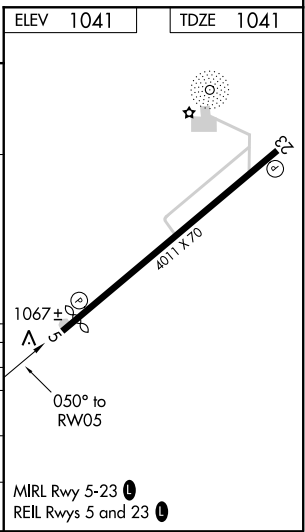
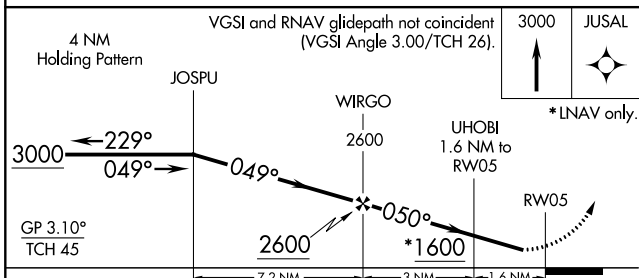
MISSED APPROACH: Climb to 3000 direct JUSAL and hold.

AWOS-3PT 118.625	CINCINNATI APP CON 121.0 254.25	UNICOM 122.8 (CTAF)	122.9 0
----------------------------	---	-------------------------------	-----------------------



EC-2, 11 AUG 2022 to 08 SEP 2022

EC-2, 11 AUG 2022 to 08 SEP 2022



CATEGORY	A	B	C	D
LPV DA	1304-1	263 (300-1)		NA
LNAV/VNAV DA	1330-1	289 (300-1)		NA
LNAV MDA	1420-1	379 (400-1)		NA
CIRCLING	1460-1 419 (500-1)	1500-1 459 (500-1)	1600-1½ 559 (600-1½)	NA