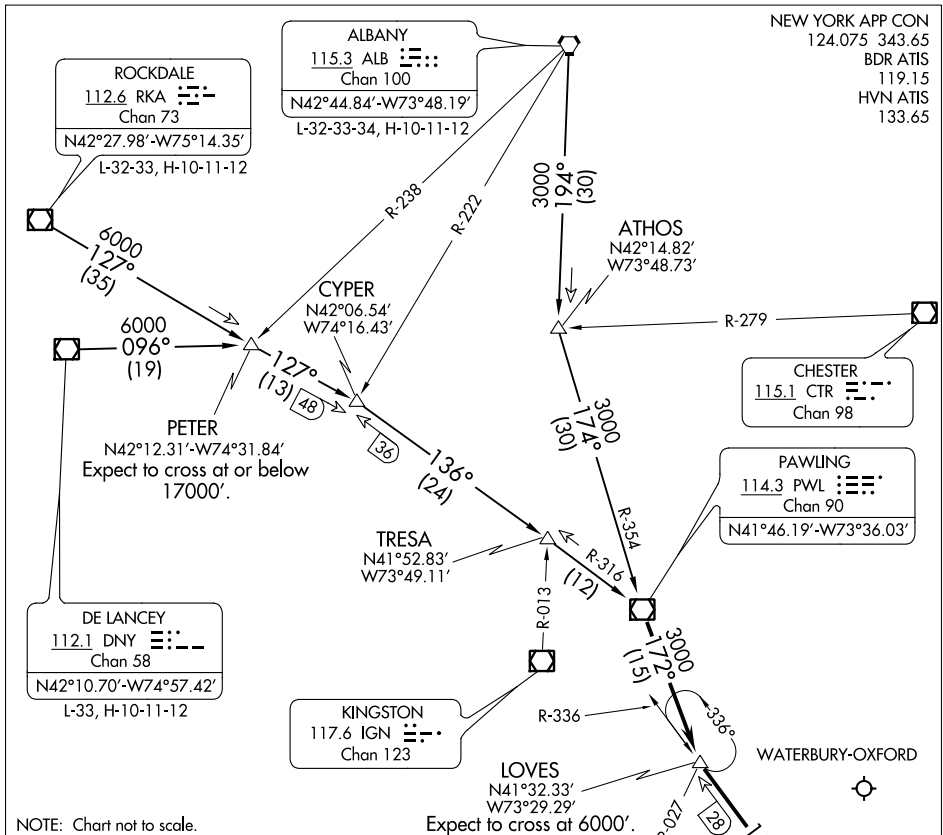


NEW YORK APP CON  
 124.075 343.65  
 BDR ATIS  
 119.15  
 HWN ATIS  
 133.65



NE-1, 07 OCT 2021 to 04 NOV 2021

NE-1, 07 OCT 2021 to 04 NOV 2021

NOTE: Chart not to scale.

### ARRIVAL DESCRIPTION

**ALBANY TRANSITION (ALB.BDR1):** From over ALB VORTAC via ALB R-194 to ATHOS INT, then via PWL R-354 to PWL VOR/DME. Thence . . .

**DELANCEY TRANSITION (DNY.BDR1):** From over DNY VOR/DME via DNY R-096 to PETER INT, then via RKA R-127 to CYPER INT, then via PWL R-316 to PWL VOR/DME. Thence . . .

**ROCKDALE TRANSITION (RKA.BDR1):** From over RKA VOR/DME via RKA R-127 to CYPER INT, then via PWL R-316 to PWL VOR/DME. Thence . . .

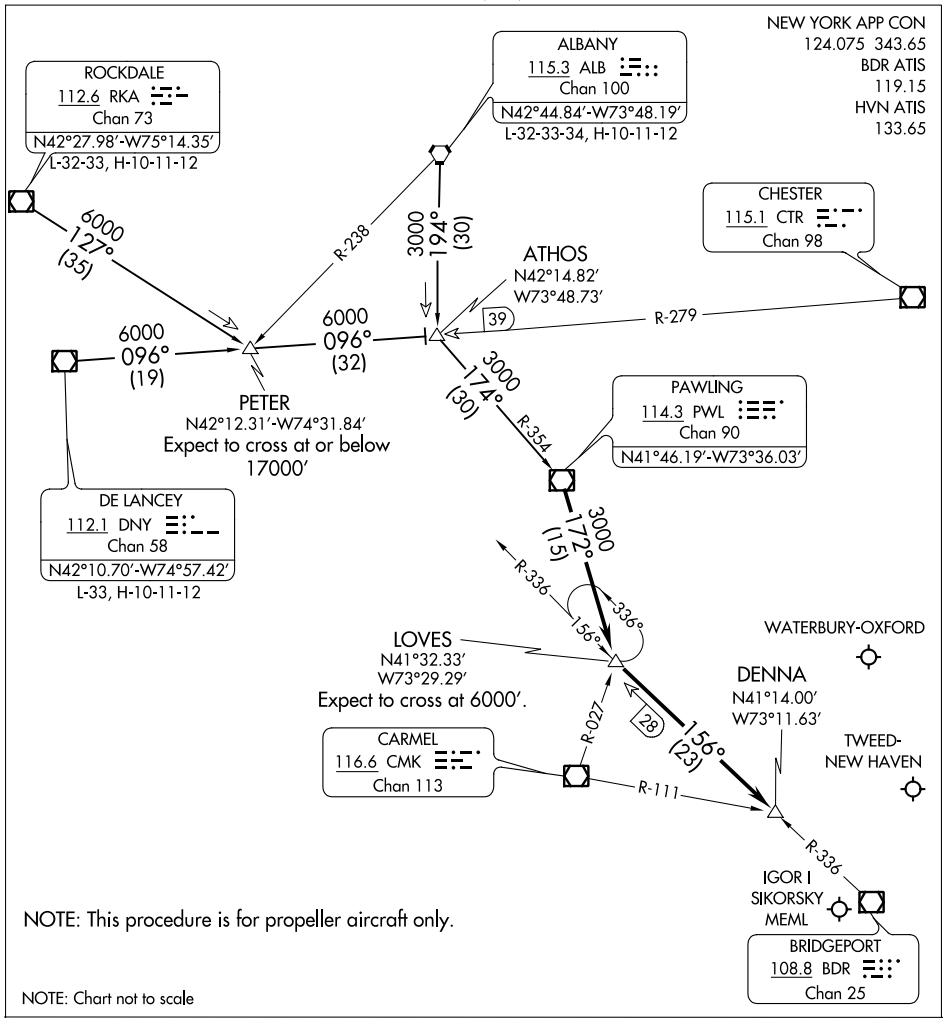
. . . From over PWL VOR/DME via PWL R-172 to LOVES INT. Then via BDR R-336 to DENNA INT. Expect radar vectors to the final approach course.

NOTE: This procedure applicable to jet aircraft only.

# DENNA TWO ARRIVAL

AL-621 (FAA)

BRIDGEPORT, CONNECTICUT



NE-1, 07 OCT 2021 to 04 NOV 2021

NE-1, 07 OCT 2021 to 04 NOV 2021

# DENNA TWO ARRIVAL

BRIDGEPORT, CONNECTICUT

ALBANY TRANSITION (ALB.DENNA2): From over ALB VORTAC via ALB R-194 to ATHOS INT, then via PWL R-354 to PWL VOR/DME. Thence....

DELANCEY TRANSITION (DNY.DENNA2): From over DNY VOR/DME via DNY R-096 to ATHOS INT, then via PWL R-354 to PWL VOR/DME. Thence....

ROCKDALE TRANSITION (RKA.DENNA2): From over RKA VOR/DME via RKA R-127 to PETER INT, then via DNY R-096 to ATHOS INT, then via PWL R-354 to PWL VOR/DME. Thence....

....From over PWL VOR/DME via PWL R-172 to LOVES INT. Then via BDR R-336 to DENNA INT. Expect radar vectors to final approach course.