

WAAS CH 97614 W27A	APP CRS 275°	Rwy Idg TDZE Apt Elev	4502 763 763
--	------------------------	-----------------------------	---

RNAV (GPS) RWY 27

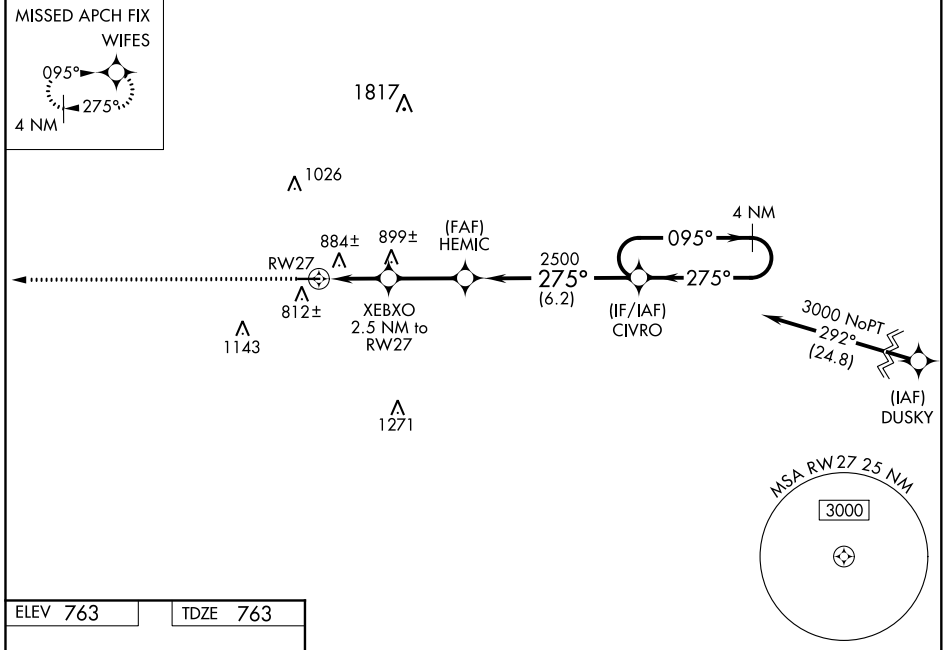
PUTNAM COUNTY (OWX)

RNP APCH.

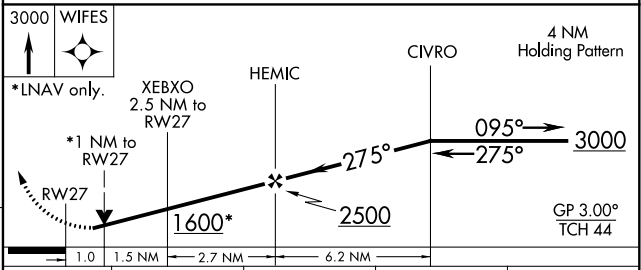
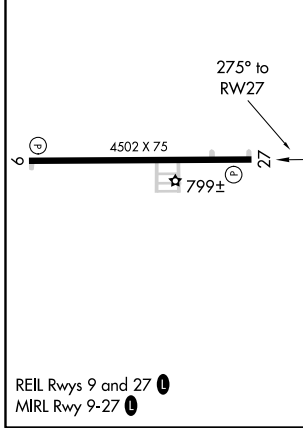
▽ For uncompensated Baro-VNAV systems, LNAV/VNAV NA below -16°C or above 54°C .
△ NA Baro-VNAV and VDP NA when using Findlay altimeter setting. Rwy 27 helicopter visibility reduction below 3/4 SM NA. When local altimeter setting not received, use Findlay altimeter setting and increase all DAs/MDAs 40 feet.

MISSED APPROACH:
 Climb to 3000 direct WIFES and hold.

AWOS-3 120.525	TOLEDO APP CON 120.8 317.55	UNICOM 122.7 (CTAF) 0
--------------------------	---------------------------------------	---------------------------------



ELEV 763	TDZE 763
----------	----------



CATEGORY	A	B	C	D
LPV DA	1048-1	285 (300-1)		NA
LNAV/VNAV DA	1185-1½	422 (500-1½)		NA
LNAV MDA	1140-1	377 (400-1)		NA
CIRCLING	1200-1 437 (500-1)	1220-1 457 (500-1)		NA

REIL Rwy 9 and 27 **0**
 MIRL Rwy 9-27 **0**

OTTAWA, OHIO
 Orig-A 24MAY18

41°02'N-83°59'W

PUTNAM COUNTY (OWX) RNAV (GPS) RWY 27

EC-2, 19 MAY 2022 to 16 JUN 2022

EC-2, 19 MAY 2022 to 16 JUN 2022

WAAS CH 86514 W09A	APP CRS 095°	Rwy ldg 4502 TDZE 760 Apt Elev 763
--	------------------------	---

RNAV (GPS) RWY 9

PUTNAM COUNTY (OWX)

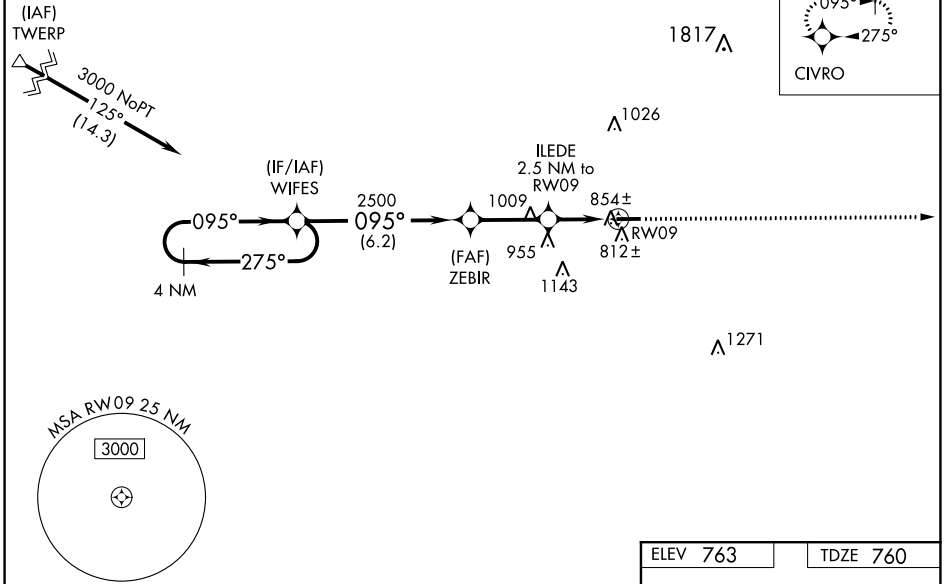
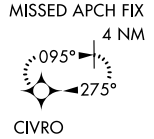
RNP APCH.

▼ For uncompensated Baro-VNAV systems, LNAV/VNAV NA below -16°C or above 54°C.
▲ NA Rwy 9 helicopter visibility reduction below ¼ SM NA. Baro-VNAV and VDP NA when using Findlay altimeter setting. When local altimeter setting not received, use Findlay altimeter setting and increase all DAs/MDAs 40 feet.

MISSED APPROACH:
Climb to 3000 direct CIVRO and hold.

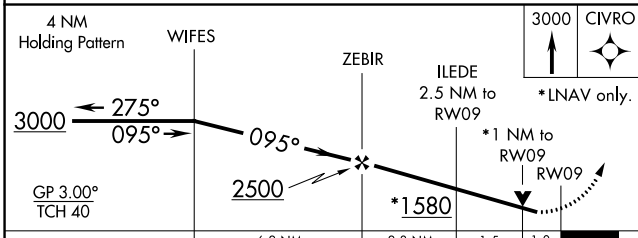
AWOS-3 120.525	TOLEDO APP CON 120.8 317.55	UNICOM 122.7 (CTAF) 0
--------------------------	---------------------------------------	---------------------------------

Procedure NA for arrivals at TWERP on V8-422 westbound.



EC-2, 19 MAY 2022 to 16 JUN 2022

EC-2, 19 MAY 2022 to 16 JUN 2022



CATEGORY	A	B	C	D
LPV DA	1048-1	288 (300-1)		NA
LNAV/VNAV DA	1147-1 ½	387 (400-1 ½)		NA
LNAV MDA	1120-1	360 (400-1)		NA
CIRCLING	1200-1 437 (500-1)	1220-1 457 (500-1)		NA

ELEV 763	TDZE 760
----------	----------

REIL Rwy 9 and 27 **0**
MIRL Rwy 9-27 **0**

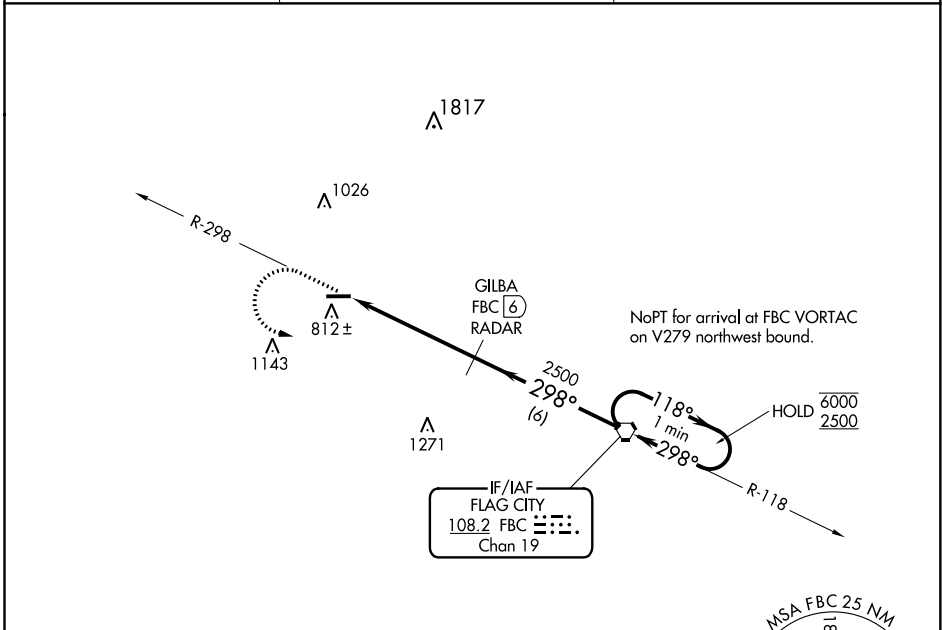
VORTAC FBC 108.2 Chan 19	APP CRS 298°	Rwy Idg TDZE Apt Elev	4502 763 763
---------------------------------------	------------------------	-----------------------------	---

VOR RWY 27
PUTNAM COUNTY (OWX)

RADAR or DME required.
 ▼ Rwy 27 helicopter visibility reduction below 1 SM NA.
 ▲ NA Straight-in, Circling Rwy 27 NA at night.

MISSED APPROACH: Climb to 2500 on FBC VORTAC R-298 then left turn direct FBC VORTAC and hold.

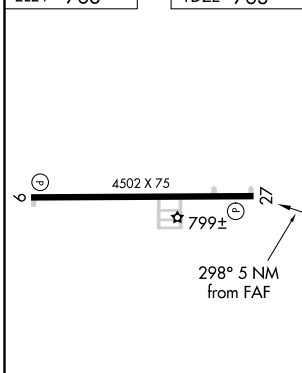
AWOS-3 120.525	TOLEDO APP CON 120.8 317.55	UNICOM 122.7 (CTAF) 0
--------------------------	---------------------------------------	---------------------------------



EC-2, 19 MAY 2022 to 16 JUN 2022

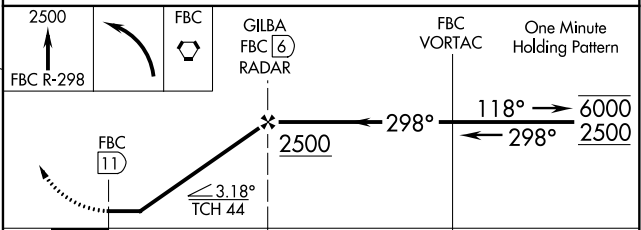
EC-2, 19 MAY 2022 to 16 JUN 2022

ELEV 763	TDZE 763
----------	----------



REIL Rwys 9 and 27
MRL Rwy 9-27

FAF to MAP 5 NM					
Knots	60	90	120	150	180
Min:Sec	5:00	3:20	2:30	2:00	1:40



CATEGORY	A	B	C	D
S-27	1220-1	457 (500-1)	NA	
CIRCLING	1220-1	457 (500-1)	NA	