

WAAS CH <b>49026</b> <b>W02A</b>	APP CRS <b>017°</b>	Rwy Idg TDZE Apt Elev	<b>6020</b> <b>182</b> <b>194</b>
--	------------------------	-----------------------------	---

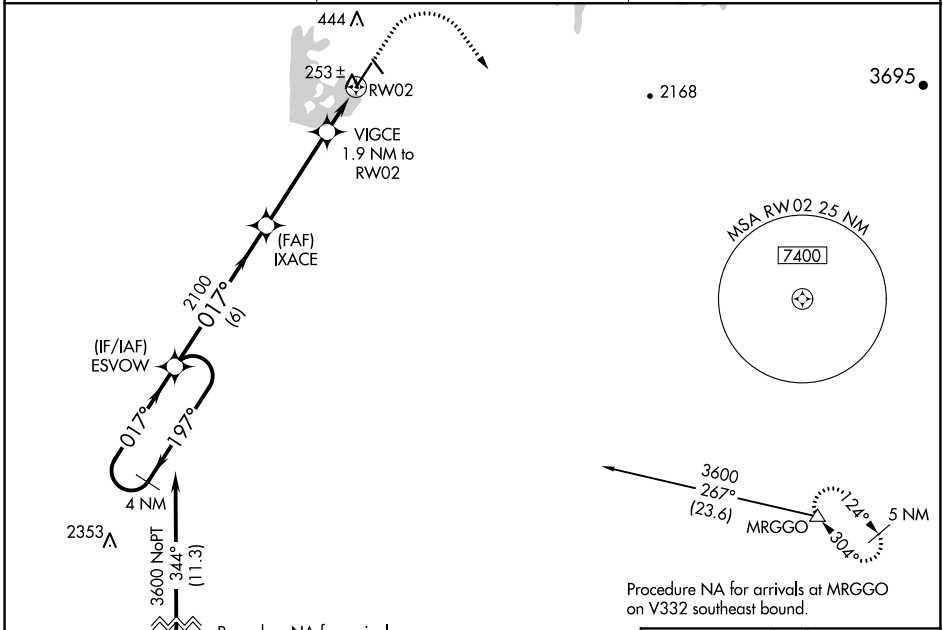
# RNAV (GPS) RWY 2

OROVILLE MUNI (OVE)

**▽** For uncompensated Baro-VNAV systems, LNAV/VNAV NA below -2°C (29°F) or above 54°C (130°F). Circling NA northeast of Rwy 13-31. DME/DME RNP-0.3 NA.

**MISSED APPROACH:** Climb to 650 then climbing right turn to 6000 direct MRGGO and hold, continue climb-in-hold to 6000.

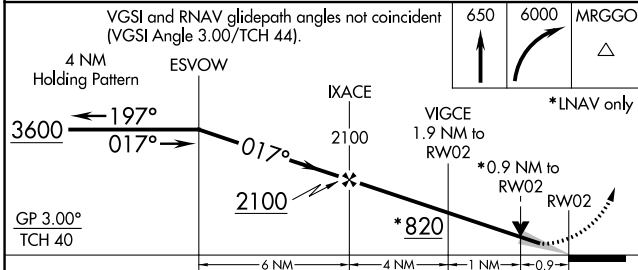
ASOS <b>121.425</b>	NORCAL APP CON <b>125.4 259.1</b>	UNICOM <b>122.8 (CTAF)</b>
------------------------	--------------------------------------	-------------------------------



SW-2, 15 JUL 2021 to 12 AUG 2021

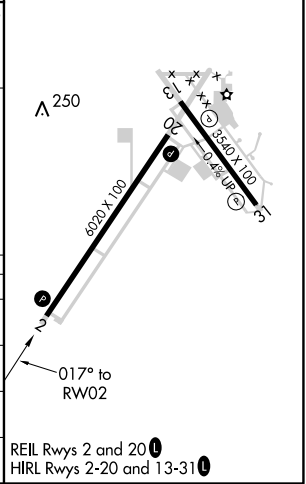
SW-2, 15 JUL 2021 to 12 AUG 2021

VGSI and RNAV glidepath angles not coincident (VGSI Angle 3.00/TCH 44).



CATEGORY	A	B	C	D
LPV DA		432-7/8	250 (300-7/8)	
LNAV/VNAV DA		432-7/8	250 (300-7/8)	
LNAV MDA		520-1	338 (400-1)	
<b>C</b> CIRCLING	580-1 386 (400-1)	660-1 466 (500-1)	660-1½ 466 (500-1½)	780-2 586 (600-2)

ELEV 194	TDZE 182
----------	----------



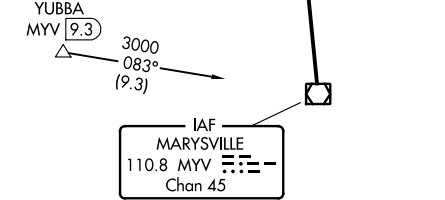
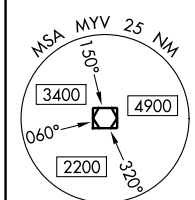
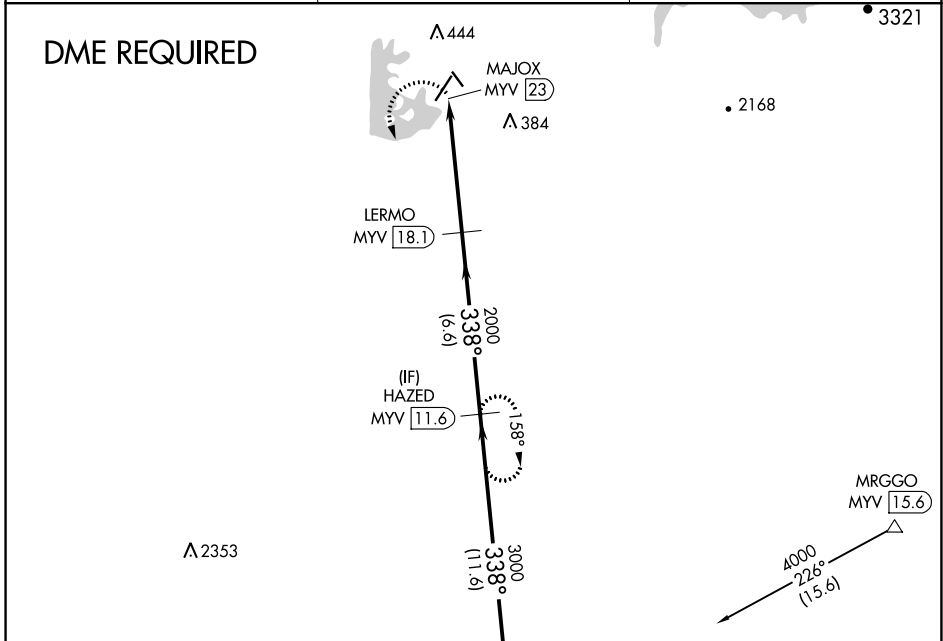
VOR/DME MYV <b>110.8</b> Chan <b>45</b>	APP CRS <b>338°</b>	Rwy Idg TDZE Apt Elev	<b>N/A</b> <b>N/A</b> <b>194</b>
---	------------------------	-----------------------------	--

**VOR-A**  
OROVILLE MUNI (OVE)

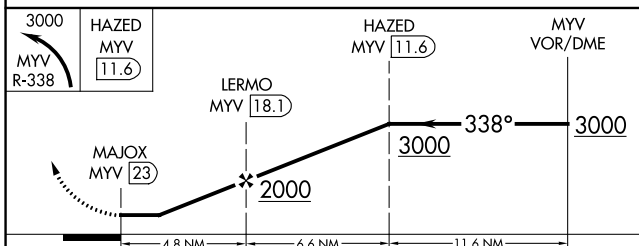
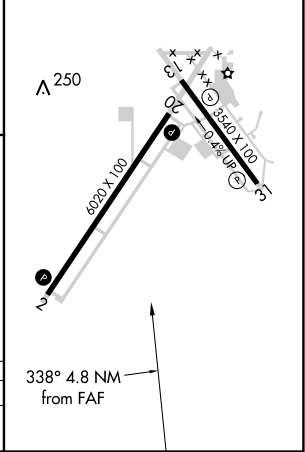
**▼** Circling NA northeast of Rwy 13-31. DME required.

MISSED APPROACH: Climbing left turn to 3000 on MYV VOR/DME R-338 to HAZED/MYV 11.6 DME and hold.

ASOS <b>121.425</b>	NORCAL APP CON <b>125.4 259.1</b>	UNICOM <b>122.8</b> (CTAF) <b>0</b>
------------------------	--------------------------------------	--



ELEV 194  
REIL Rwys 2 and 20  
HIRL Rwys 2-20 and 13-31



CATEGORY	A	B	C	D
CIRCLING	840-1	646 (700-1)	840-1 3/4 646 (700-1 3/4)	840-2 646 (700-2)

SW-2, 15 JUL 2021 to 12 AUG 2021

SW-2, 15 JUL 2021 to 12 AUG 2021