

LOC I-LJU <b>108.5</b>	APP CRS <b>245°</b>	Rwy Idg <b>11800</b>
		TDZE <b>624</b>
		Apr Elev <b>633</b>

# ILS or LOC RWY 25

OSCODA/WURTSMITH (OSC)

DME required.

**NA** Circling NA southeast of Rwy 7-25. For inop ALS, increase S-LOC Cats C and D visibility to 1 SM. DME from ASP DME. Simultaneous reception of I-LJU and ASP DME required.

MALSR

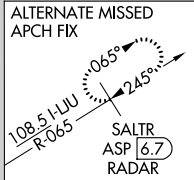
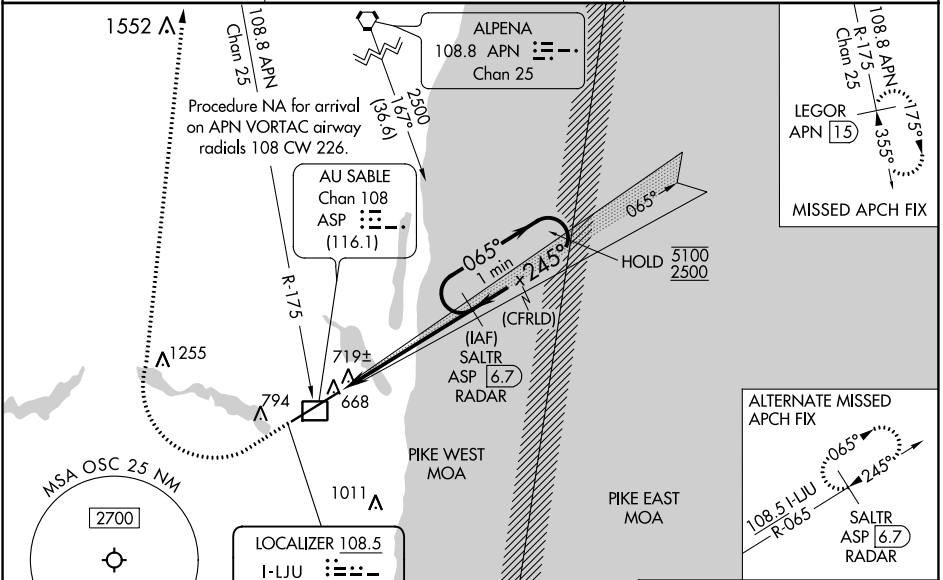


MISSED APPROACH: Climb to 1300 then climbing right turn to 3000 on heading 030° and an APN VORTAC R-175 to LEGOR/APN 15 DME and hold.

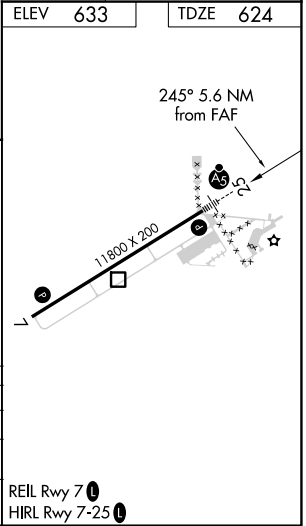
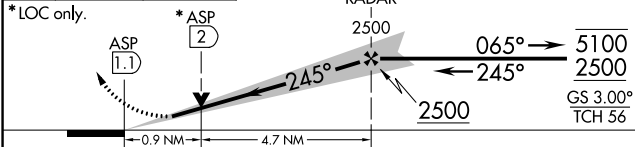
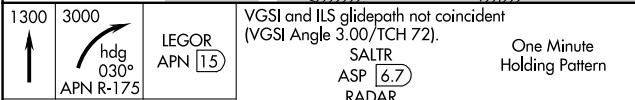
AWOS-3  
**118.7**

MINNEAPOLIS CENTER  
**125.475 269.45**

UNICOM  
**123.0 (CTAF)**



ELEV 633	TDZE 624
----------	----------



CATEGORY	A	B	C	D
S-ILS 25	824-1/2 200 (200-1/2)			
S-LOC 25	980-1/2 356 (400-1/2)		980-5/8 356 (400-5/8)	
<b>C</b> CIRCLING	1140-1 507 (600-1)		1300-2 667 (700-2)	

REIL Rwy 7  
HIRL Rwy 7-25

EC-1, 26 JAN 2023 to 23 FEB 2023

EC-1, 26 JAN 2023 to 23 FEB 2023

WAAS CH <b>82317</b>	APP CRS <b>245°</b>	Rwy Idg TDZE <b>624</b>	<b>11800</b>
<b>W25A</b>		Apt Elev <b>633</b>	

# RNAV (GPS) RWY 25

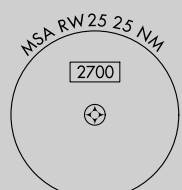
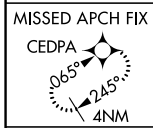
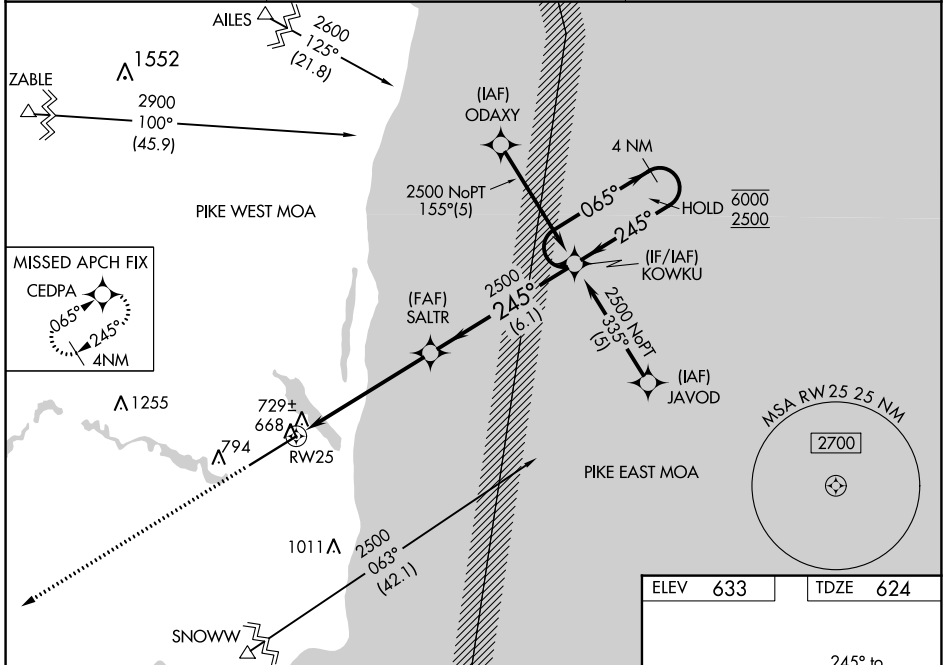
OSCODA/WURTSMITH (OSC)

RNP APCH.

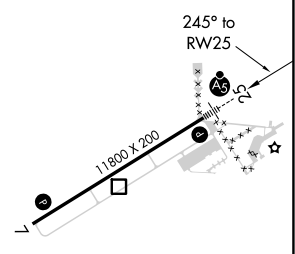
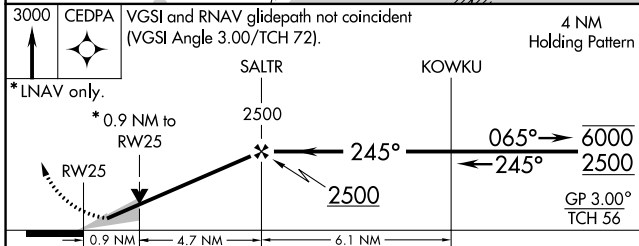
▼ Circling NA southeast of Rwy 7-25. Baro-VNAV and VDP NA when using Alpena altimeter setting. For uncompensated Baro-VNAV systems, LNAV/VNAV NA below -16°C or above 54°C. When local altimeter setting not received, use Alpena altimeter setting and increase all DA 96 feet and all MDA 100 feet. Increase LNAV/VNAV all Cats and LNAV and Circling Cat C visibility ¼ SM, and Circling Cat D visibility ½ SM. For inop ALS, increase LNAV Cats C and D visibility to 1 SM. For inop ALS when using Alpena altimeter setting, increase LPV all Cats visibility to ¾ SM.

MALSR MISSED APPROACH:  
Climb to 3000 direct  
CEDPA and hold.

AWOS-3 <b>118.7</b>	MINNEAPOLIS CENTER <b>125.475 269.45</b>	UNICOM <b>123.0 (CTAF) 0</b>
------------------------	---	---------------------------------



ELEV <b>633</b>	TDZE <b>624</b>
-----------------	-----------------



CATEGORY	A	B	C	D
LPV DA	824-½ 200 (200-½)			
LNAV/VNAV DA	1004-¾ 380 (400-¾)			
LNAV MDA	980-½ 356 (400-½)	980-⅝ 356 (400-⅝)	980-1 356 (400-1)	980-1 356 (400-1)
CIRCLING	1140-1 507 (600-1)	1160-1½ 527 (600-1½)	1300-2 667 (700-2)	

REIL Rwy 7 0  
HIRL Rwy 7-25 0

EC-1, 26 JAN 2023 to 23 FEB 2023

EC-1, 26 JAN 2023 to 23 FEB 2023

WAAS CH <b>97417</b> <b>W07A</b>	APP CRS <b>065°</b>	Rwy Idg <b>11800</b> TDZE <b>633</b> Apt Elev <b>633</b>
--	------------------------	--

# RNAV (GPS) RWY 7

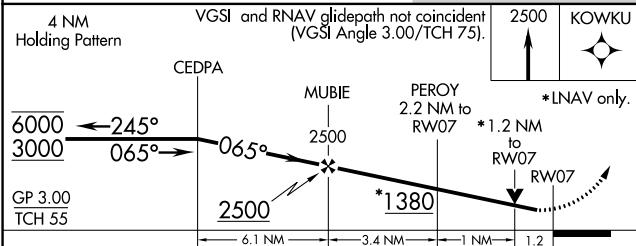
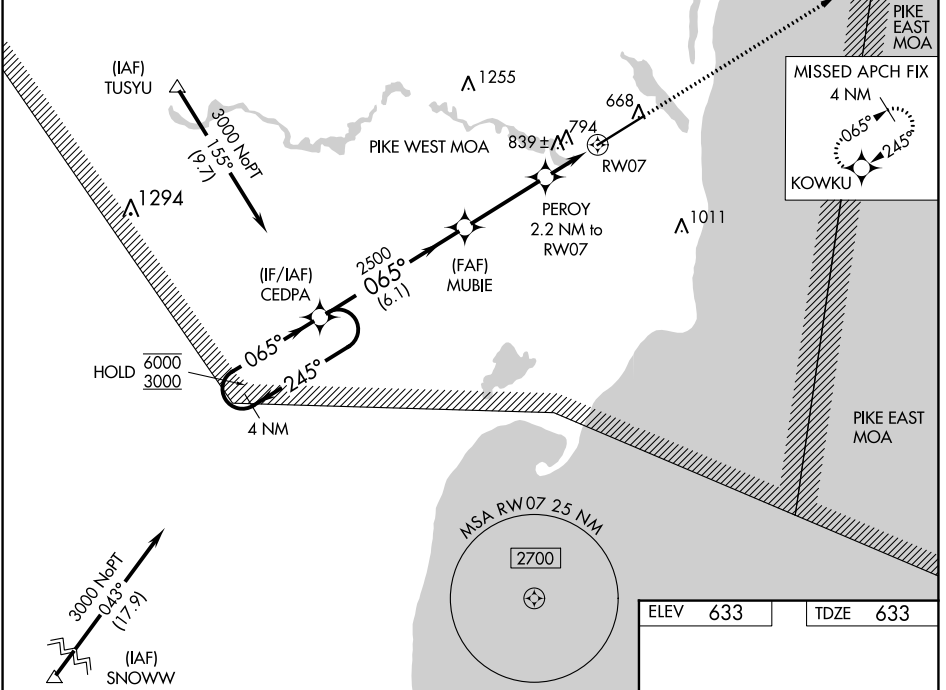
OSCODA/WURTSMITH (OSC)

RNP APCH:

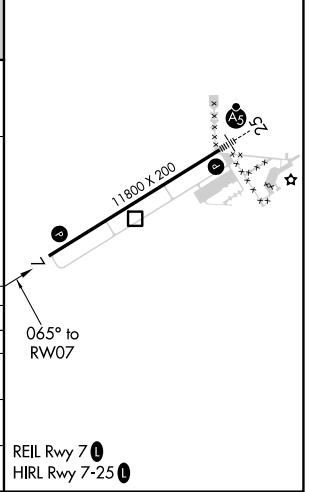
▼ Circling NA southeast of Rwy 7-25. Baro-VNAV and VDP NA when using Alpena altimeter setting. Rwy 7 helicopter visibility reduction below  $\frac{3}{4}$  SM NA. For uncompensated Baro-VNAV systems, LNAV/VNAV NA below -16°C or above 54°C. When local altimeter setting not received use Alpena altimeter setting and increase all DA 96 feet and all MDA 100 feet. Increase LPV all Cats and LNAV Cat C and D visibility  $\frac{1}{4}$  SM, and Circling Cat C visibility  $\frac{1}{4}$  SM and Cat D visibility  $\frac{1}{2}$  SM.

MISSED APPROACH:  
Climb to 2500 direct KOWKU and hold.

AWOS-3 <b>118.7</b>	MINNEAPOLIS CENTER <b>125.475 269.45</b>	UNICOM <b>123.0 (CTAF)</b>
------------------------	---	-------------------------------



ELEV <b>633</b>	TDZE <b>633</b>
-----------------	-----------------



CATEGORY	A	B	C	D
LPV DA	892- $\frac{3}{4}$ 259 (300- $\frac{3}{4}$ )			
LNAV/VNAV DA	1148-1 $\frac{3}{4}$ 515 (600-1 $\frac{3}{4}$ )			
LNAV MDA	1080-1 447 (500-1)	1080-1 $\frac{3}{8}$ 447 (500-1 $\frac{3}{8}$ )	1080-1 $\frac{1}{2}$ 447 (500-1 $\frac{1}{2}$ )	1080-1 $\frac{1}{2}$ 447 (500-1 $\frac{1}{2}$ )
CIRCLING	1140-1 507 (600-1)	1160-1 $\frac{1}{2}$ 527 (600-1 $\frac{1}{2}$ )	1300-2 667 (700-2)	

EC-1, 26 JAN 2023 to 23 FEB 2023

EC-1, 26 JAN 2023 to 23 FEB 2023