

APP CRS <b>168°</b>	Rwy Idg TDZE Apt Elev	<b>6004</b> <b>364</b> <b>364</b>
------------------------	-----------------------------	---

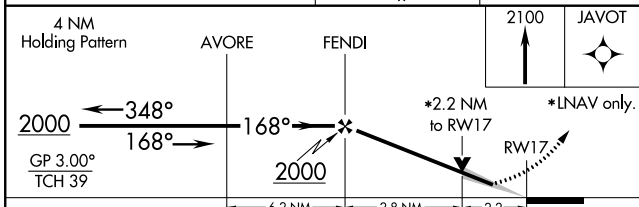
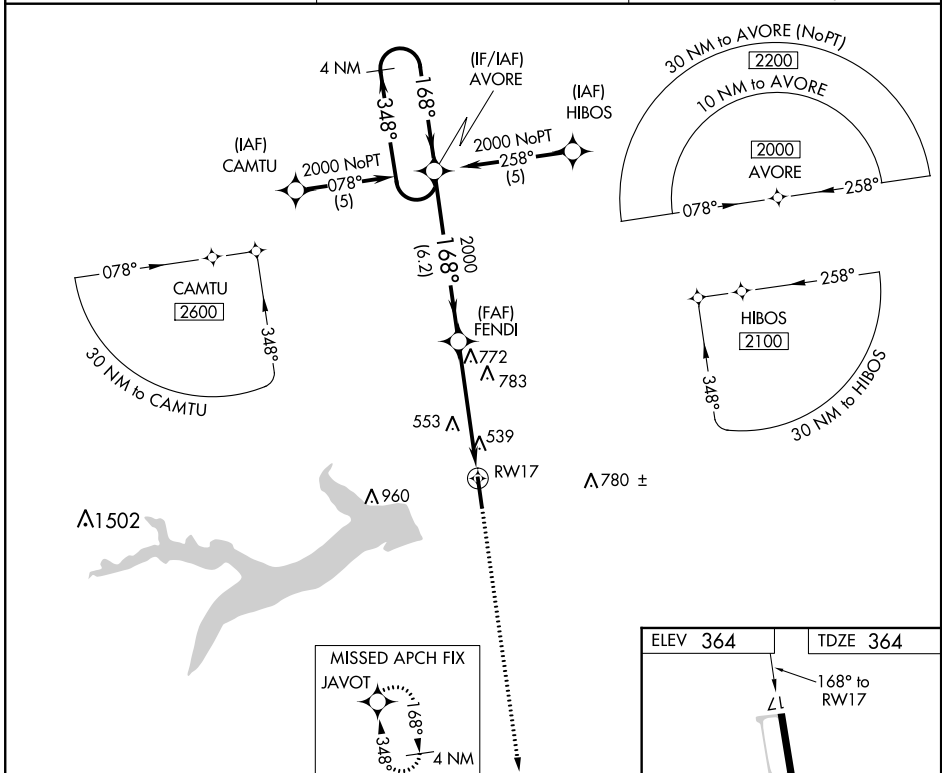
# RNAV (GPS) RWY 17

MOUNT PLEASANT RGNL (OSA)

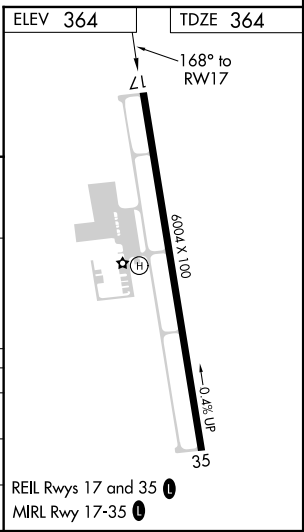
**▼** For uncompensated Baro-VNAV systems, LNAV/VNAV NA below -15°C (5°F) or above 48°C (118°F). DME/DME RNP-0.3 NA. When local altimeter setting not received, use Paris altimeter setting and increase all DA/MDA 120 feet, increase LNAV/VNAV visibilities ¼ mile all Cats, LNAV visibilities ½ mile all Cats, and circling visibilities ½ mile all Cats. VDP and Baro-VNAV NA when using Paris altimeter setting.

**▲** MISSED APPROACH: Climb to 2100 direct JAVOT and hold.

AWOS-3 <b>119.775</b>	FORT WORTH CENTER <b>132.025 360.75</b>	UNICOM <b>122.7 (CTAF) 0</b>
--------------------------	--	---------------------------------



CATEGORY	A	B	C	D
LNAV/DA/VNAV	890-2 526 (600-2)			
LNAV MDA	1100-1 736 (800-1)	1100-2 736 (800-2)	1100-2 736 (800-2)	1100-2 736 (800-2) 1100-2 736 (800-2) 1100-2 736 (800-2)
CIRCLING	1100-1 736 (800-1)	1100-2 736 (800-2)	1100-2 736 (800-2)	1100-2 736 (800-2)



SC-2, 08 OCT 2020 to 05 NOV 2020

SC-2, 08 OCT 2020 to 05 NOV 2020

APP CRS <b>348°</b>	Rwy Idg TDZE Apt Elev	<b>6004</b> <b>360</b> <b>364</b>
------------------------	-----------------------------	---

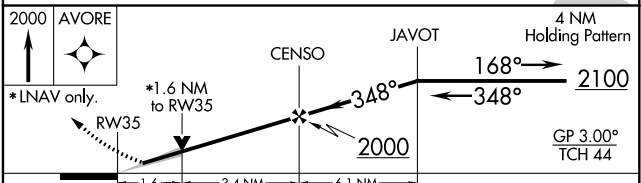
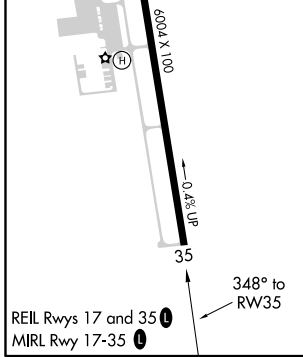
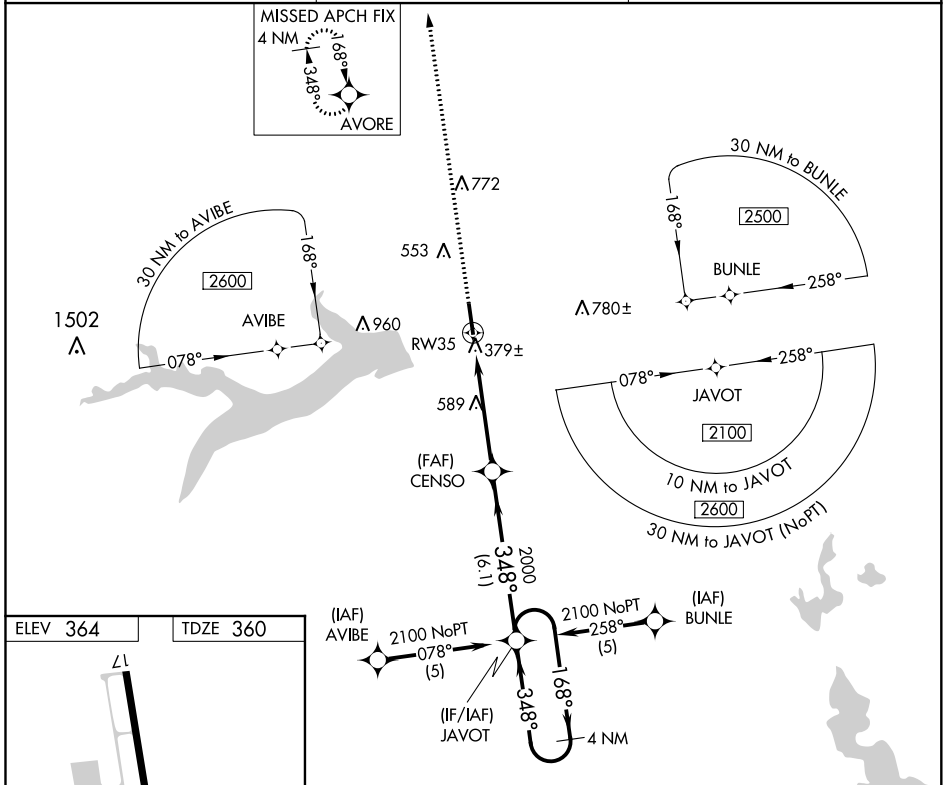
# RNAV (GPS) RWY 35

MOUNT PLEASANT RGNL (OSA)

**▼** For uncompensated Baro-VNAV systems, LNAV/VNAV NA below -15°C (5°F) or above 48°C (118°F). DME/DME RNP-0.3 NA. When local altimeter setting not received, use Paris altimeter setting and increase all DA/MDA 120 feet, increase LNAV/VNAV visibilities ½ mile all Cats, LNAV visibilities ¼ mile all Cats and circling visibilities ¼ mile all Cats. VDP and Baro-VNAV NA when using Paris altimeter setting.

**▲** MISSED APPROACH: Climb to 2000 direct AVORE and hold.

AWOS-3 <b>119.775</b>	FORT WORTH CENTER <b>132.025 360.75</b>	UNICOM <b>122.7 (CTAF) 0</b>
--------------------------	--	---------------------------------



CATEGORY	A	B	C	D
LNAV/VNAV DA	700-1¼ 340 (400-1¼)			
LNAV MDA	900-1	540 (600-1)	900-1½ 540 (600-1½)	900-1¾ 540 (600-1¾)
CIRCLING	900-1	536 (600-1)	900-1½ 536 (600-1½)	920-2 556 (600-2)

SC-2, 08 OCT 2020 to 05 NOV 2020

SC-2, 08 OCT 2020 to 05 NOV 2020