

LOC/DME I-ORK 111.9 Chan 56	APP CRS 053°	Rwy Idg 5002 TDZE 541 Apt Elev 545
-------------------------------------------------	------------------------	---------------------------------------------------------------

LOC RWY 5

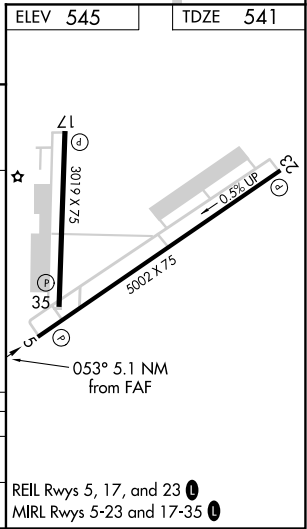
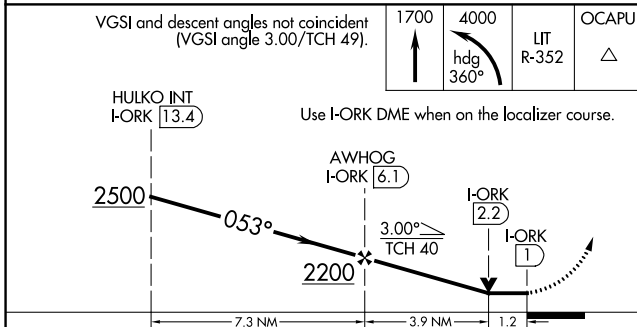
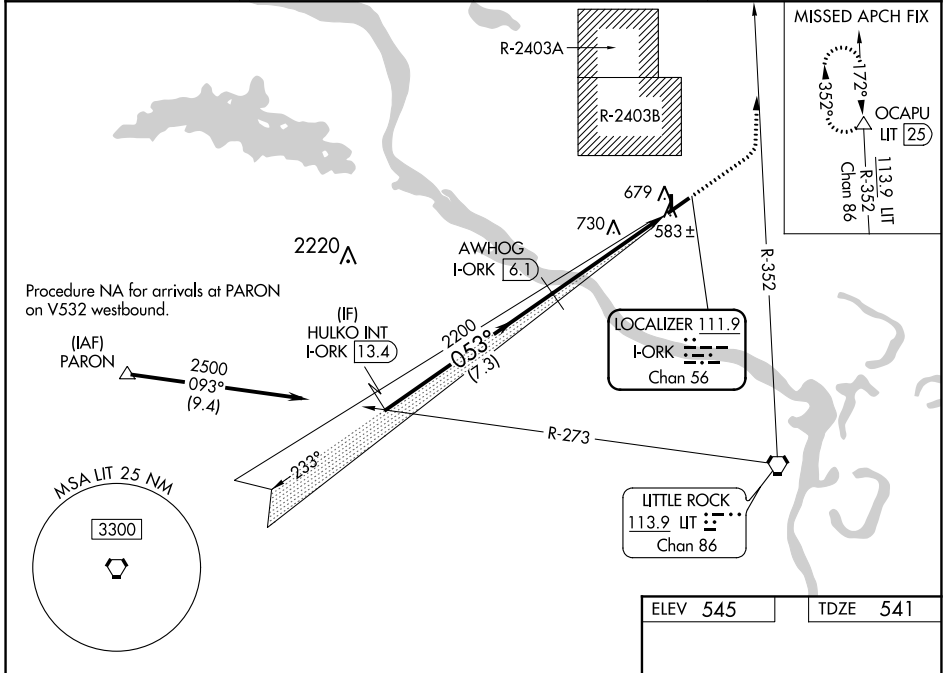
NORTH LITTLE ROCK MUNI (ORK)

From PARON: RNAV 1-GPS required.
DME and RADAR required.

⚠ Circling NA for Cats B and C north of Rwy 5-23 when R-2403B active.

MISSED APPROACH: Climb to 1700 then climbing left turn to 4000 on heading 360° and LIT VORTAC R-352 to OCAPU/LIT 25 DME and hold.

AWOS-3PT 123.775	LITTLE ROCK APP CON 119.5 306.2	CLNC DEL 121.6	UNICOM 123.075 (CTAF) 0
----------------------------	-------------------------------------------	--------------------------	-----------------------------------



CATEGORY	A	B	C	D
S-5	980-1	439 (500-1)	980-1¼ 439 (500-1¼)	NA
C CIRCLING	1040-1	495 (500-1)	1080-1½ 535 (600-1½)	NA

SC-1, 08 SEP 2022 to 06 OCT 2022

SC-1, 08 SEP 2022 to 06 OCT 2022

APP CRS	Rwy Idg	3019
358°	TDZE	545
	Apt Elev	545

RNAV (GPS) RWY 35

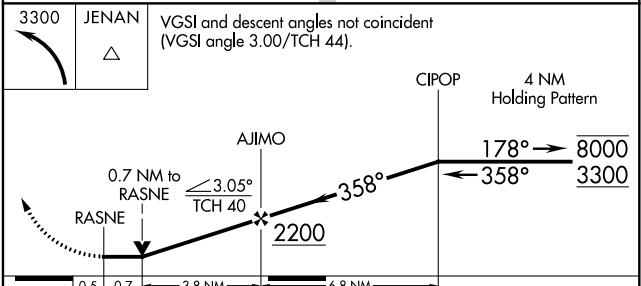
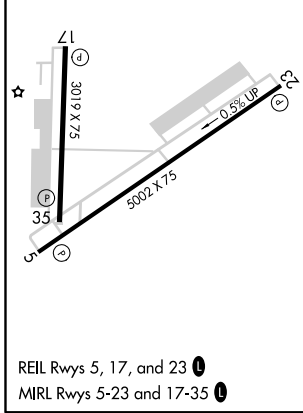
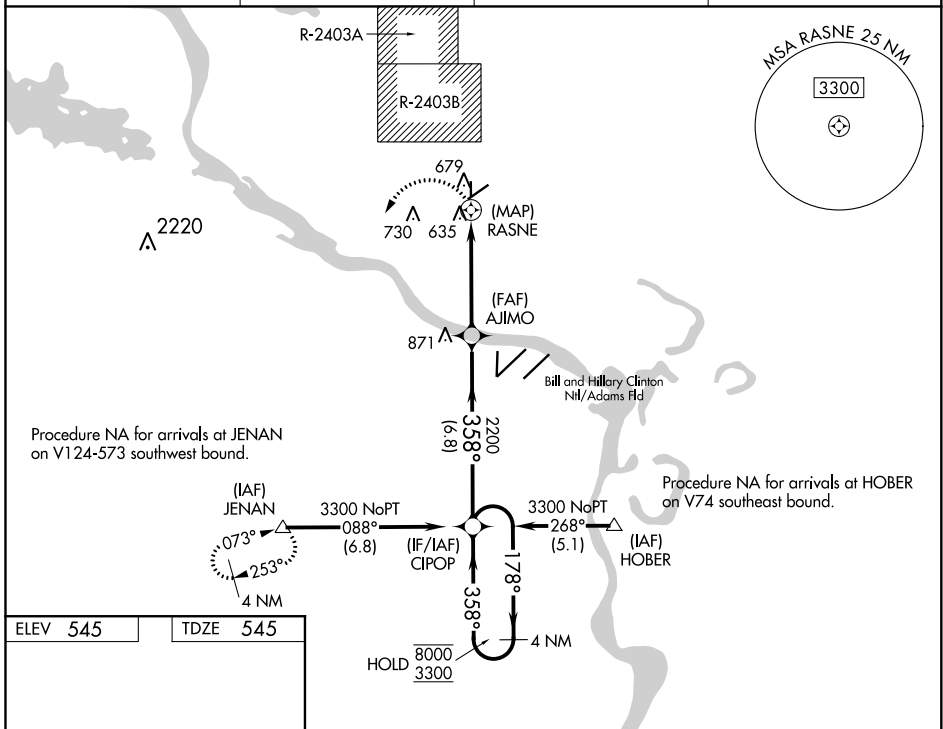
NORTH LITTLE ROCK MUNI (OR.K)

RNP APCH.

▼ Circling NA for Cats B and C north of Rwy 5-23 when R-2403B is active.
▲ Rwy 35 helicopter visibility reduction below 3/4 SM NA.
 Procedure NA when restricted area R-2403B is in use.

MISSED APPROACH: Climbing left turn to 3300 direct JENAN and hold.

AWOS-3PT 123.775	LITTLE ROCK APP CON 119.5 306.2	CLNC DEL 121.6	UNICOM 123.075 (CTAF) 0
----------------------------	-------------------------------------------	--------------------------	-----------------------------------



CATEGORY	A	B	C	D
LNAV MDA	960-1	415 (500-1)	960-1 1/8 415 (500-1 1/8)	NA
C CIRCLING	1040-1	495 (500-1)	1080-1 1/2 535 (600-1 1/2)	NA

SC-1, 08 SEP 2022 to 06 OCT 2022

SC-1, 08 SEP 2022 to 06 OCT 2022

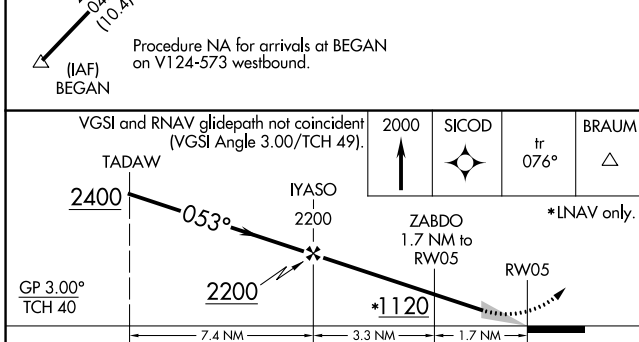
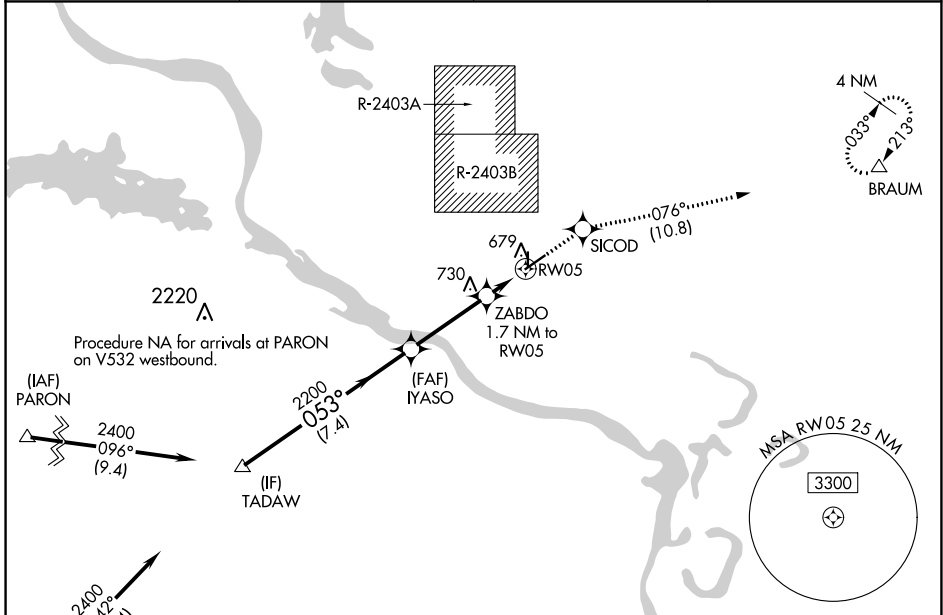
WAAS CH 58106 W05A	APP CRS 053°	Rwy Idg TDZE Apt Elev	5002 541 545
----------------------------------------	------------------------	-----------------------------	-----------------------------------------

RNAV (GPS) RWY 5

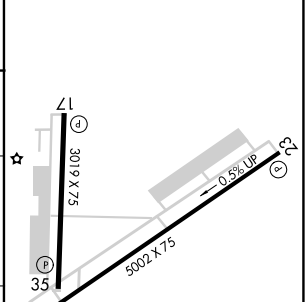
NORTH LITTLE ROCK MUNI (ORK)

RNP APCH.		MISSED APPROACH: Climb to 2000 direct SICOD and on track 076° to BRAUM and hold.	
<p>⚠ Circling NA for Cats B and C north of Rwy 5-23 when restricted area R-2403B in use. For uncompensated Baro-VNAV systems, LNAV/VNAV NA below -16°C or above 54°C.</p>			

AWOS-3PT 123.775	LITTLE ROCK APP CON 119.5 306.2	CLNC DEL 121.6	UNICOM 123.075 (CTAF) 0
----------------------------	-------------------------------------------	--------------------------	-----------------------------------



ELEV 545	TDZE 541
----------	----------



CATEGORY	A	B	C	D
LPV DA	854-7/8	313 (400-7/8)		NA
LNAV/VNAV DA	986-13/8	445 (500-13/8)		NA
LNAV MDA	1000-1	459 (500-1)	1000-13/8 459 (500-13/8)	NA
C CIRCLING	1060-1	515 (600-1)	1080-1 1/2 535 (600-1 1/2)	NA

REIL Rws 5, 17, and 23 0
MIRL Rws 5-23 and 17-35 0

SC-1, 08 SEP 2022 to 06 OCT 2022

SC-1, 08 SEP 2022 to 06 OCT 2022