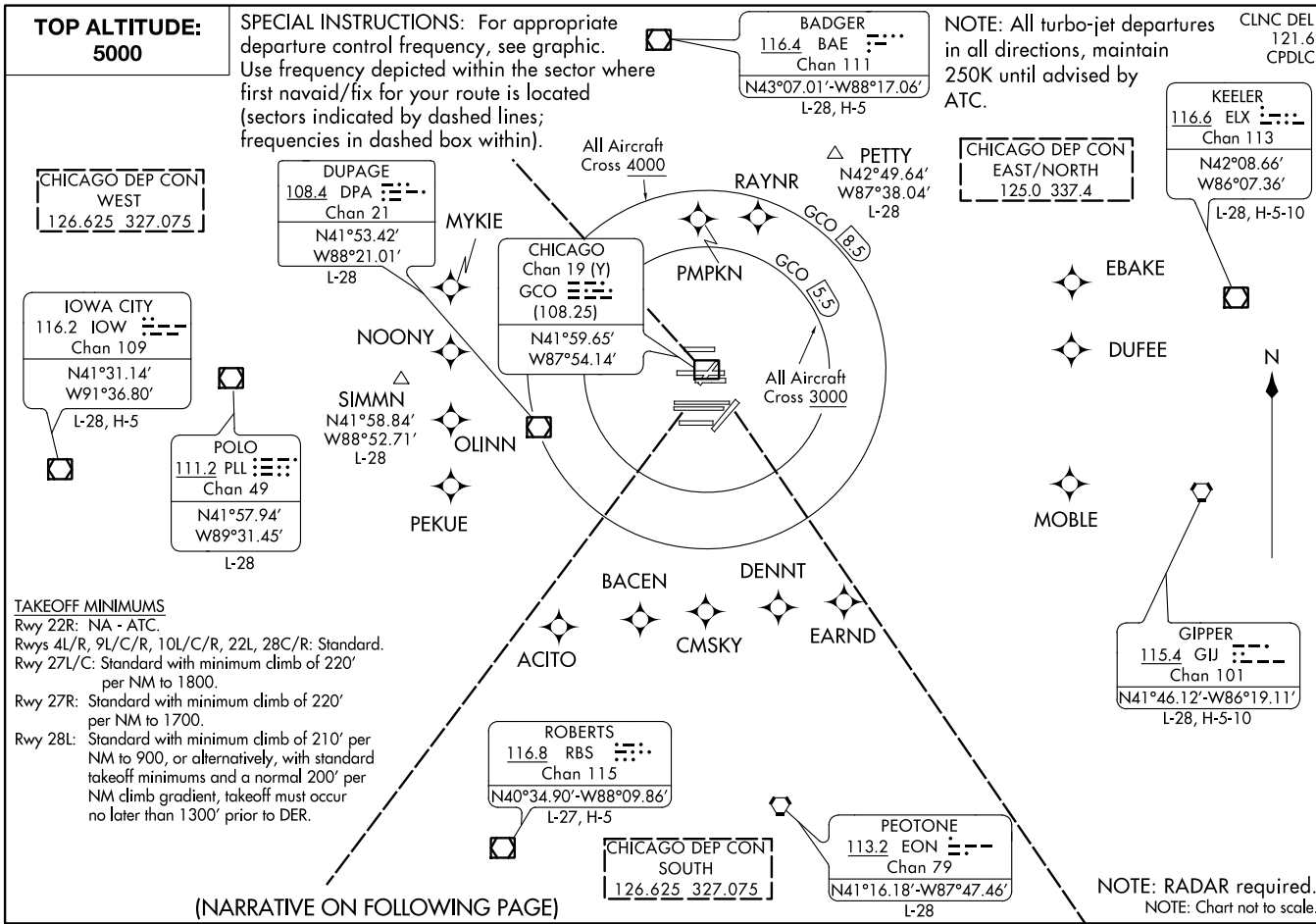


02DEC21

O'HARE SEVEN DEPARTURE

CHICAGO, ILLINOIS
CHICAGO O'HARE INTL (ORD)



(NARRATIVE ON FOLLOWING PAGE)

SPECIAL INSTRUCTIONS: For appropriate departure control frequency, see graphic. Use frequency depicted within the sector where first navaid/fix for your route is located (sectors indicated by dashed lines; frequencies in dashed box within).

NOTE: All turbo-jet departures in all directions, maintain 250K until advised by ATC.

CLNC DEL
121.6
CPDLC

**TOP ALTITUDE:
5000**

**CHICAGO DEP CON
WEST**
126.625 327.075

DUPAGE
108.4 DPA
Chan 21
N41°53.42'
W88°21.01'
L-28

IOWA CITY
116.2 IOW
Chan 109
N41°31.14'
W91°36.80'
L-28, H-5

POLO
111.2 PLL
Chan 49
N41°57.94'
W89°31.45'
L-28

BADGER
116.4 BAE
Chan 111
N43°07.01'-W88°17.06'
L-28, H-5

**CHICAGO DEP CON
EAST/NORTH**
125.0 337.4

KEELER
116.6 ELX
Chan 113
N42°08.66'
W86°07.36'
L-28, H-5-10

CHICAGO Chan 19 (Y)
GCO
(108.25)
N41°59.65'
W87°54.14'

PETTY
N42°49.64'
W87°38.04'
L-28

EBAKE

DUFEE

MOBLE

GIPPER
115.4 GIJ
Chan 101
N41°46.12'-W86°19.11'
L-28, H-5-10

ROBERTS
116.8 RBS
Chan 115
N40°34.90'-W88°09.86'
L-27, H-5

**CHICAGO DEP CON
SOUTH**
126.625 327.075

PEATONE
113.2 EON
Chan 79
N41°16.18'-W87°47.46'
L-28

NOTE: RADAR required.
NOTE: Chart not to scale.

21336

AL-166 (FAA)

CHICAGO O'HARE INTL (ORD)
CHICAGO, ILLINOIS

O'HARE SEVEN DEPARTURE



DEPARTURE ROUTE DESCRIPTION

ALL AIRCRAFT: Expect RADAR vectors to first enroute navaid/fix.
Expect clearance to requested altitude/flight level ten minutes after departure.

ALL AIRCRAFT: Cross 5.5 DME arc of GCO DME at or above 3000, cross
8.5 DME arc of GCO DME at or above 4000, maintain 5000 or assigned altitude.
If unable to comply advise ATC as soon as possible prior to departure.

EC-3, 02 DEC 2021 to 30 DEC 2021

EC-3, 02 DEC 2021 to 30 DEC 2021