

NDB RYS <b>419</b>	APP CRS <b>044°</b>	Rwy ldg <b>4846</b>
		TDZE <b>590</b>
		Apt Elev <b>591</b>

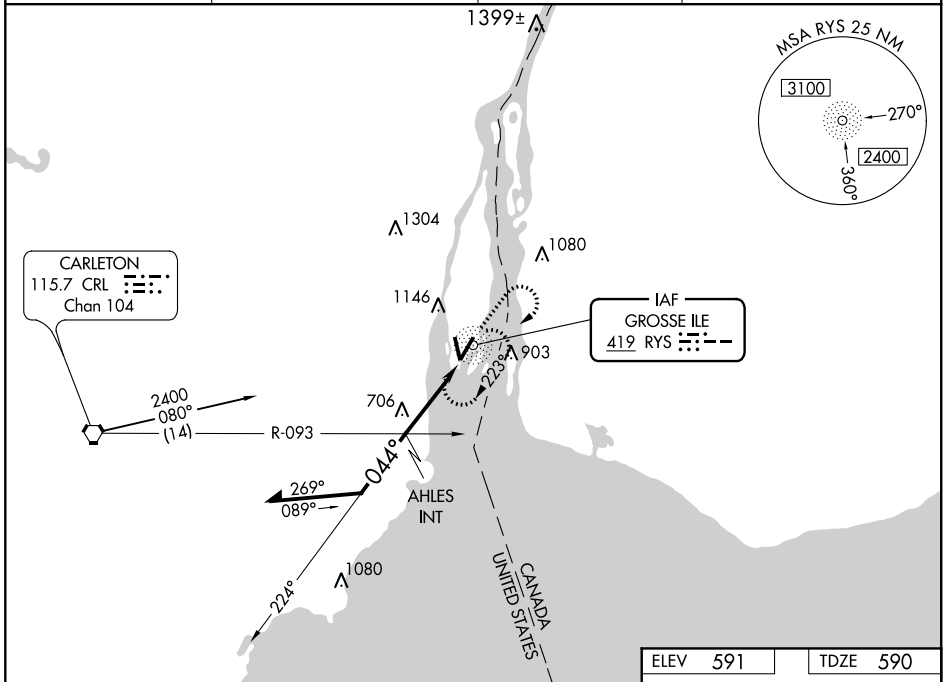
# NDB RWY 4

GROSSE ILE MUNI (ONZ)

**⚠** Visibility reduction by helicopters NA. When local altimeter setting not received, use Detroit Metropolitan Wayne County altimeter setting and increase all MDA 40 feet. Increase AHLES fix minimums Circling Cat A, C, and D visibilities ¼ mile.

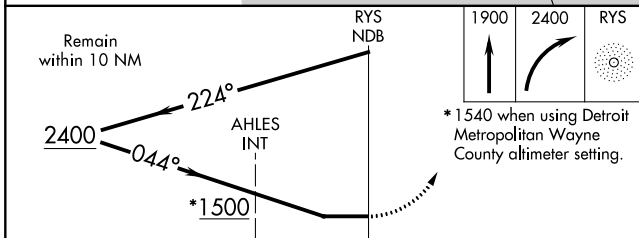
**⚠** MISSED APPROACH: Climb to 1900 then climbing right turn to 2400 direct RYS NDB and hold.

AWOS-3 <b>119.675</b>	DETROIT APP CON <b>134.3 284.0</b>	GCO <b>121.725</b>	UNICOM <b>123.0 (CTAF) 0</b>
--------------------------	---------------------------------------	-----------------------	---------------------------------

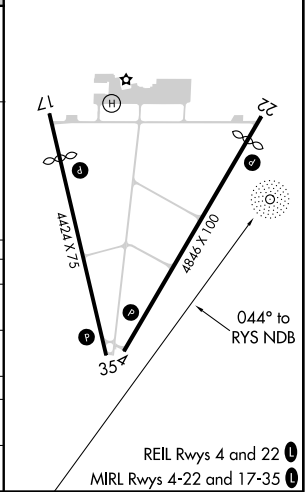


EC-1, 02 DEC 2021 to 30 DEC 2021

EC-1, 02 DEC 2021 to 30 DEC 2021



ELEV 591	TDZE 590
----------	----------



CATEGORY	A	B	C	D
S-4	1500-1¼	910 (1000-1¼)	1500 - 2¾ 910 (1000-2¾)	1500 - 3 910 (1000-3)
CIRCLING	1500-1¼	909 (1000-1¼)	1500 - 2¾ 909 (1000-2¾)	1500 - 3 909 (1000-3)
AHLES FIX MINIMUMS				
S-4	1140 - 1	550 (600-1)	1140 - 1½ 550 (600-1½)	1140 - 1¾ 550 (600-1¾)
CIRCLING	1460 - 1 869 (900-1)	1460 - 1¼ 869 (900-1¼)	1460 - 2½ 869 (900-2½)	1460 - 2¾ 869 (900-2¾)

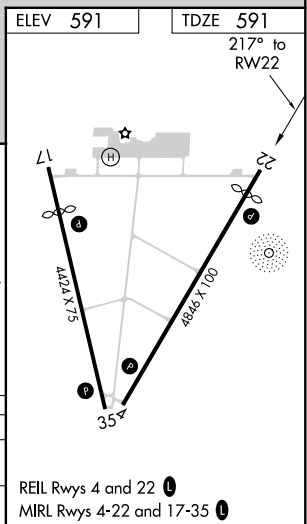
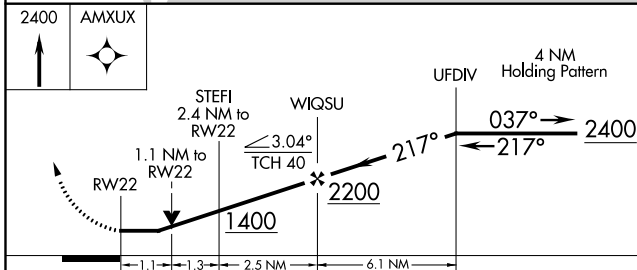
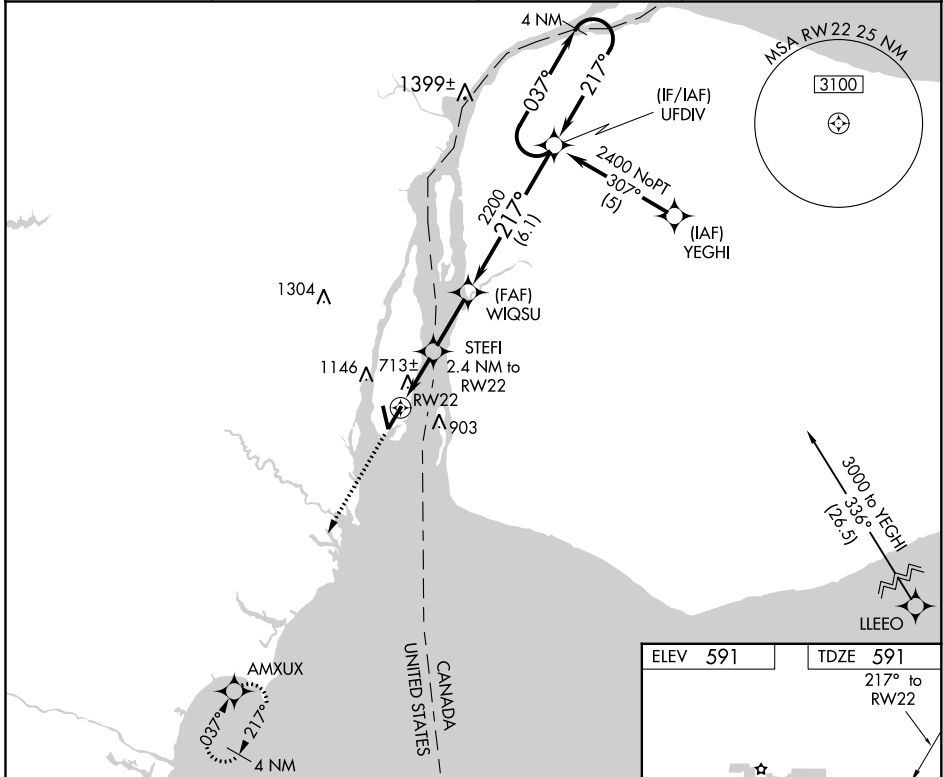
APP CRS <b>217°</b>	Rwy Idg <b>4418</b>
	TDZE <b>591</b>
	Apt Elev <b>591</b>

# RNAV (GPS) RWY 22

GROSSE ILE MUNI (ONZ)

RNP APCH.	MISSED APPROACH: Climb to 2400 direct AMXUX and hold.
Rwy 22 helicopter visibility reduction below 3/4 SM NA.	

AWOS-3 <b>119.675</b>	DETROIT APP CON <b>134.3 284.0</b>	GCO <b>121.725</b>	UNICOM <b>123.0 (CTAF) 0</b>
--------------------------	---------------------------------------	-----------------------	---------------------------------



CATEGORY	A	B	C	D
LNVA MDA	980-1	389 (400-1)	980-1 1/8 389 (400-1 1/8)	980-1 1/4 389 (400-1 1/4)
CIRCLING	1460-1 1/4	869 (900-1 1/4)	1460-2 1/2 869 (900-2 1/2)	1460-2 3/4 869 (900-2 3/4)

REIL Rwy 4 and 22 0  
MIRL Rwy 4-22 and 17-35 0

EC-1, 02 DEC 2021 to 30 DEC 2021

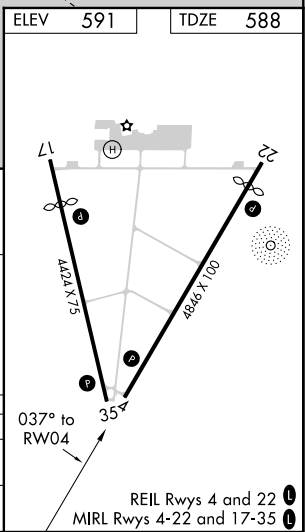
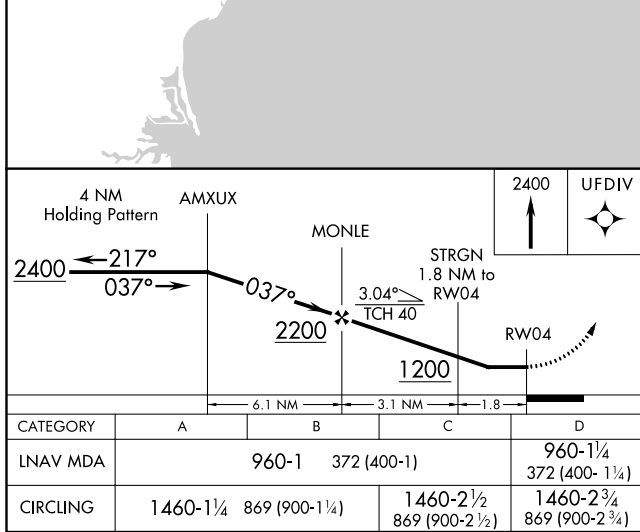
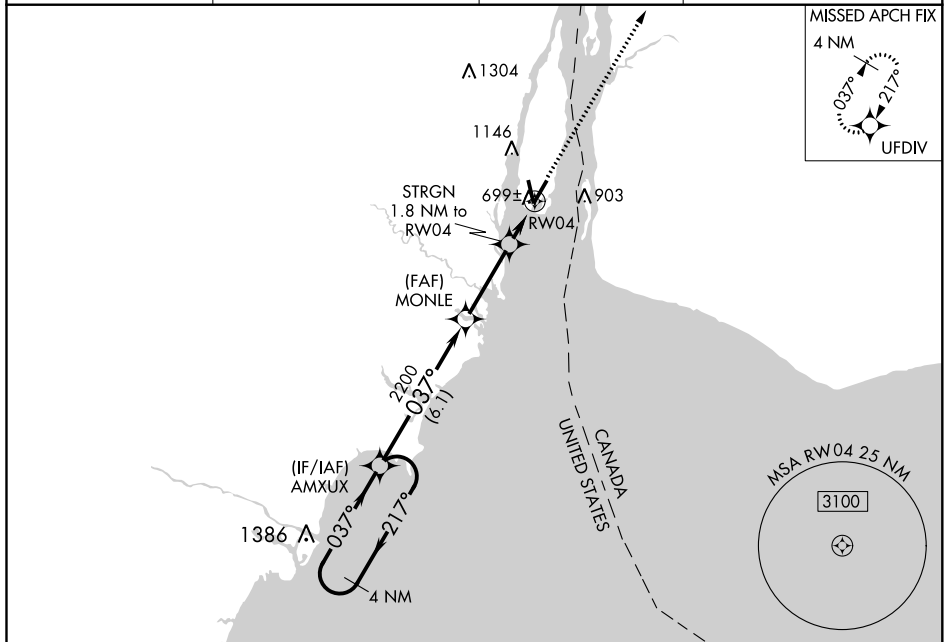
EC-1, 02 DEC 2021 to 30 DEC 2021

APP CRS <b>037°</b>	Rwy Idg <b>4846</b>
	TDZE <b>588</b>
	Apt Elev <b>591</b>

# RNAV (GPS) RWY 4

GROSSE ILE MUNI (ONZ)

RNP APCH.		MISSED APPROACH: Climb to 2400 direct UFDIV and hold.	
Rwy 4 helicopter visibility reduction below 3/4 SM NA.			
AWOS-3 <b>119.675</b>	DETROIT APP CON <b>134.3 284.0</b>	GCO <b>121.725</b>	UNICOM <b>123.0 (CTAF)</b>



DETROIT/GROSSE ILE, MICHIGAN	GROSSE ILE MUNI (ONZ)
Orig-A 24MAY18	REIL Rwy 4 and 22 MIRL Rwy 4-22 and 17-35
42°06'N-83°10'W	<b>RNAV (GPS) RWY 4</b>

EC-1, 02 DEC 2021 to 30 DEC 2021

EC-1, 02 DEC 2021 to 30 DEC 2021

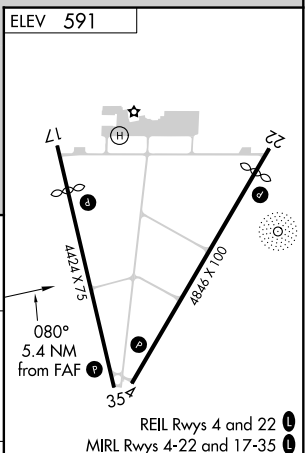
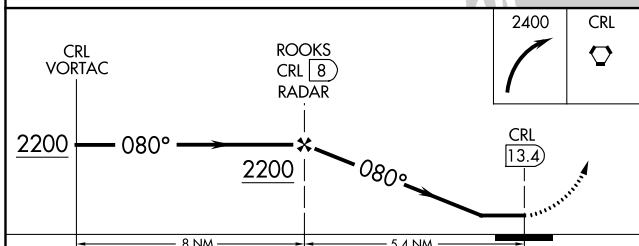
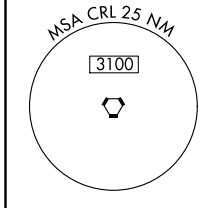
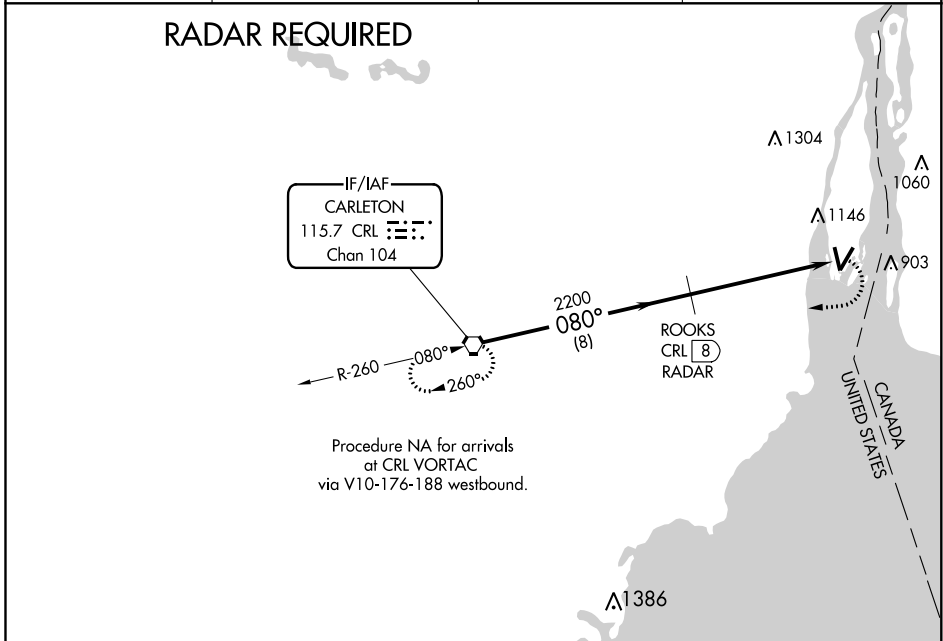
VORTAC CRL <b>115.7</b> Chan <b>104</b>	APP CRS <b>080°</b>	Rwy Idg TDZE Apt Elev	<b>N/A</b> <b>N/A</b> <b>591</b>
---	------------------------	-----------------------------	--

**VOR-A**  
GROSSE ILE MUNI (ONZ)

**⚠** When local altimeter setting not received, use Detroit Metropolitan Wayne County altimeter setting and increase all MDA 40 feet and Cat A, C, and D visibilities ¼ mile.

**⚠** MISSED APPROACH: Climbing right turn to 2400 direct CRL VORTAC and hold.

AWOS-3 <b>119.675</b>	DETROIT APP CON <b>134.3 284.0</b>	GCO <b>121.725</b>	UNICOM <b>123.0 (CTAF)</b> <b>Ⓛ</b>
--------------------------	---------------------------------------	-----------------------	--



CATEGORY	A	B	C	D	FAF to MAP 5.4 NM					
CIRCLING	1460 - 1 869 (900-1)	1460 - 1¼ 869 (900-1¼)	1460 - 2½ 869 (900-2½)	1460 - 2¾ 869 (900-2¾)	Knots	60	90	120	150	180
					Min:Sec	5:24	3:36	2:42	2:10	1:48

EC-1, 02 DEC 2021 to 30 DEC 2021

EC-1, 02 DEC 2021 to 30 DEC 2021