

WAAS CH 40234 W17A	APP CRS 175°	Rwy Idg TDZE Apt Elev	3704 27 28
--	------------------------	-----------------------------	---------------------------------------

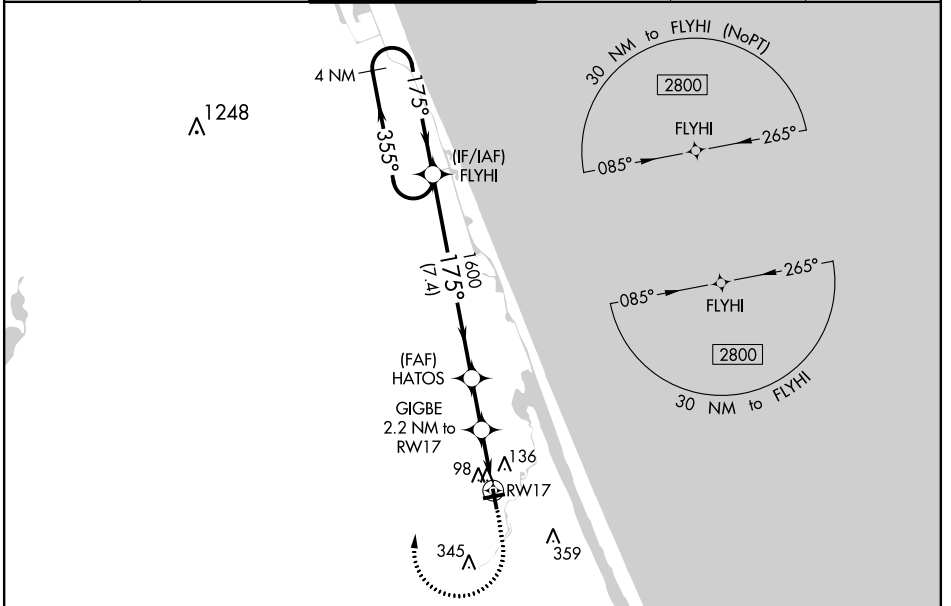
RNAV (GPS) RWY 17

ORMOND BEACH MUNI (OMN)

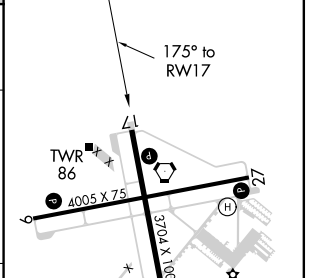
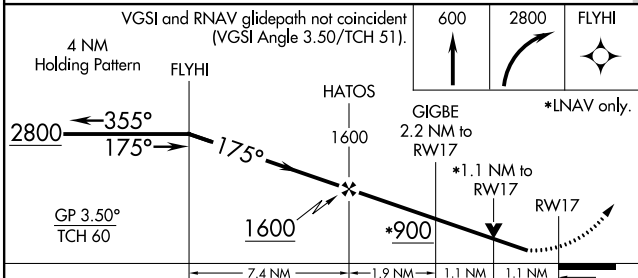
⚠ Baro-VNAV NA when using Daytona Beach altimeter setting. For uncompensated Baro-VNAV systems, LNAV/VNAV NA below -15°C (5°F) or above 54°C (130°F). DME/DME RNP-0.3 NA. Helicopter visibility reduction below 3/4 SM NA. When local altimeter setting not received, use Daytona Beach altimeter setting and increase all DA 19 feet and all MDA 20 feet; increase LNAV Cat C visibility 1/8 mile. VDP NA when using Daytona Beach altimeter setting.

MISSED APPROACH: Climb to 600 then climbing right turn to 2800 direct FLYHI and hold.

ATIS 118.475	DAYTONA APP CON 125.8 269.075	ORMOND BEACH TOWER* 119.075 (CTAF)	GND CON 121.625	CLNC DEL 121.625	UNICOM 123.05
------------------------	---	--	---------------------------	----------------------------	-------------------------



ELEV 28	TDZE 27
----------------	----------------



CATEGORY	A	B	C	D
LPV DA	302-1	275 (300-1)		NA
LNAV/VNAV DA	288-1	261 (300-1)		NA
LNAV MDA	400-1	373 (400-1)		NA
C CIRCLING	500-1	471 (500-1)	740-2 711 (800-2)	NA

REIL Rwy 9, 17, 27, and 35 **Ⓛ**
MIRL Rwy 9-27 and 17-35 **Ⓛ**

SE-3, 07 OCT 2021 to 04 NOV 2021

SE-3, 07 OCT 2021 to 04 NOV 2021

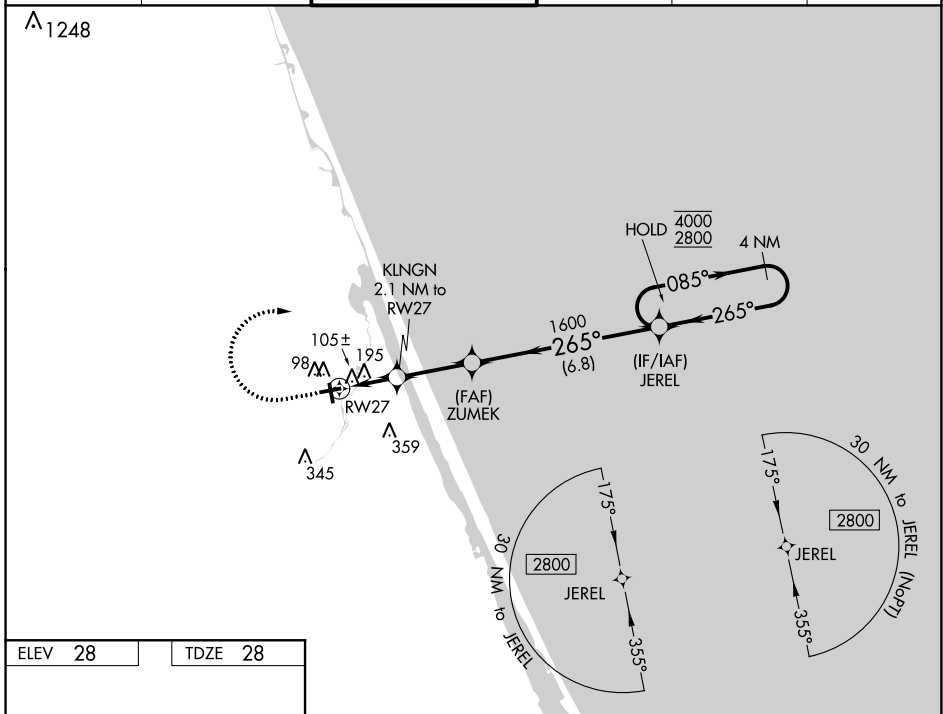
WAAS CH 77634 W27A	APP CRS 265°	Rwy Idg TDZE Apt Elev	4005 28 28
--	------------------------	-----------------------------	---------------------------------------

RNAV (GPS) RWY 27

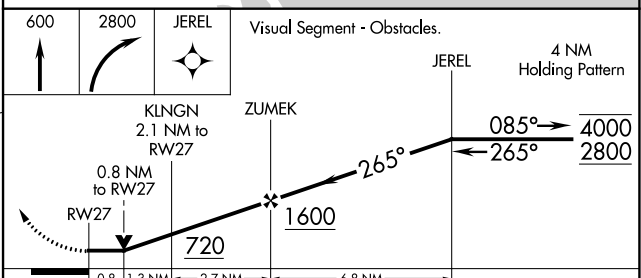
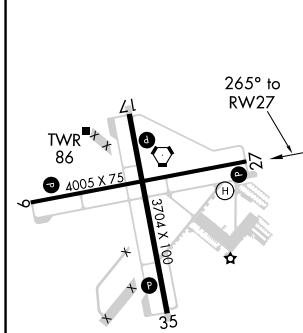
ORMOND BEACH MUNI (OMN)

RNP APCH.		MISSED APPROACH: Climb to 600 then climbing right turn to 2800 direct JEREL and hold.			
Rwy 27 helicopter visibility reduction below 3/4 SM NA.					

ATIS 118.475	DAYTONA APP CON 125.8 269.075	ORMOND BEACH TOWER* 119.075 (CTAF)	GND CON 121.625	CLNC DEL 121.625	UNICOM 123.05
------------------------	---	--	---------------------------	----------------------------	-------------------------



ELEV 28	TDZE 28
---------	---------



CATEGORY	A	B	C	D
LP MDA	360-1 332 (400-1)			NA
LNAV MDA	460-1	432 (500-1)	460-1 1/4 432 (500-1 1/4)	NA
CIRCLING	500-1	472 (500-1)	740-2 712 (800-2)	NA

SE-3, 07 OCT 2021 to 04 NOV 2021

SE-3, 07 OCT 2021 to 04 NOV 2021

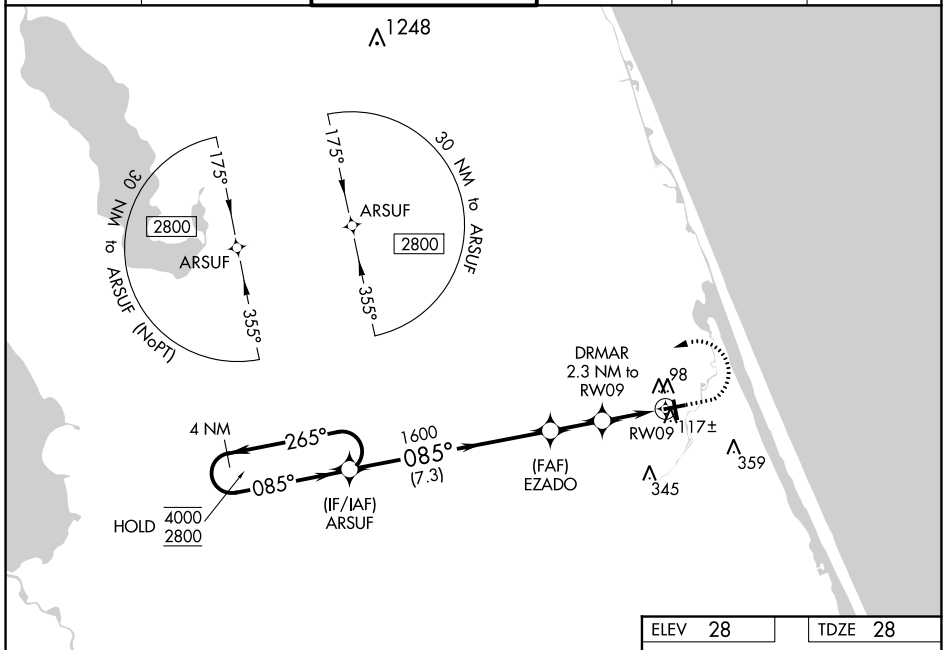
WAAS CH 82334 W09A	APP CRS 085°	Rwy Idg TDZE 28 Apt Elev 28	4005
--	------------------------	---	-------------

RNAV (GPS) RWY 9

ORMOND BEACH MUNI (OMN)

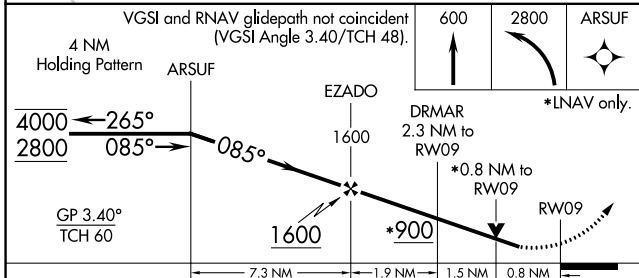
RNP APCH.	MISSED APPROACH: Climb to 600 then climbing left turn to 2800 direct ARSUF and hold.
<p>▼ Rwy 9 helicopter visibility reduction below 3/4 SM NA. For uncompensated Baro-VNAV systems, LNAV/VNAV NA below -15° C or above 54° C. VDP NA when using Daytona Beach altimeter setting.</p>	

ATIS 118.475	DAYTONA APP CON 125.8 269.075	ORMOND BEACH TOWER* 119.075 (CTAF)	GND CON 121.625	CLNC DEL 121.625	UNICOM 123.05
------------------------	---	--	---------------------------	----------------------------	-------------------------

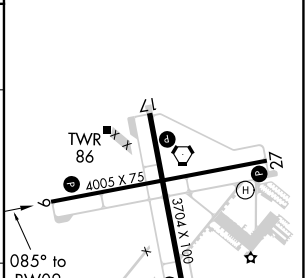


SE-3, 07 OCT 2021 to 04 NOV 2021

SE-3, 07 OCT 2021 to 04 NOV 2021



ELEV 28	TDZE 28
----------------	----------------



CATEGORY	A	B	C	D
LPV DA	313-1	285 (300-1)		NA
LNAV/VNAV DA	278-1	250 (300-1)		NA
LNAV MDA	380-1	352 (400-1)		NA
CIRCLING	500-1	472 (500-1)	740-2 712 (800-2)	NA

REIL Rwy 9, 17, 27 and 35

MIRL Rwy 9-27 and 17-35