

|             |          |             |
|-------------|----------|-------------|
| APP CRS     | Rwy Idg  | <b>3200</b> |
| <b>255°</b> | TDZE     | <b>464</b>  |
|             | Apt Elev | <b>464</b>  |

# RNAV (GPS) RWY 26

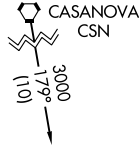
ORANGE COUNTY (OMH)

**⚠** DME/DME RNP-0.3 NA. When local altimeter setting not received, use Charlottesville altimeter setting and increase all MDA 80 feet. Rwy 26 helicopter visibility reduction below 1 SM NA. Straight-in Rwy 26 NA at night, Circling Rwy 26 NA at night.

**⚠** MISSED APPROACH: Climb to 3100 direct ZAVRO and hold.

|                                 |   |  |
|---------------------------------|---|--|
| <b>AWOS-3</b><br><b>118.075</b> | <b>POTOMAC APP CON</b><br><b>132.85 323.125</b> | <b>UNICOM</b><br><b>122.8 (CTAF) 0</b> |
|---------------------------------|---|--|

Procedure NA for arrivals on CSN VORTAC airway radials 148 CW 239.



(IAF) DAGME

3000 NoPT  
179°  
(8.7)

4 NM

1457A

2500  
255°  
(6.2)

(IF/IAF) OTTR

3000 NoPT  
279°  
(11.1)

3000  
279°  
(10)

(IAF) FIMAR

BROOKE BRV

Procedure NA for arrivals on BRV VORTAC airway radials 214 CW 309.

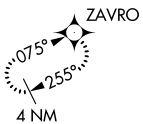
882 RW26

WOGVO  
3 NM to RW26

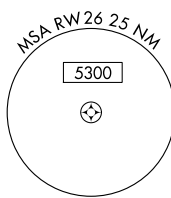
(FAF) IDUNE

863A

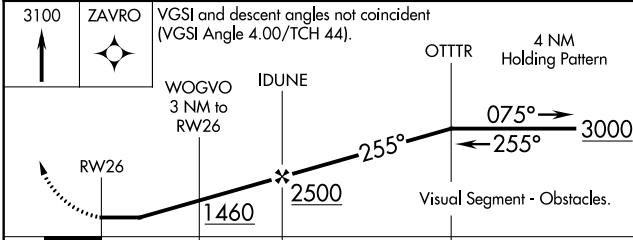
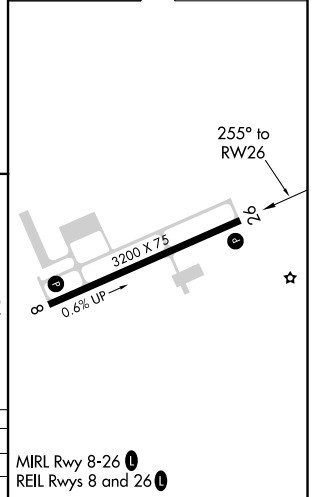
MISSED APCH FIX



VGSI and descent angles not coincident (VGSI Angle 4.00/TCH 44).



|          |          |
|----------|----------|
| ELEV 464 | TDZE 464 |
|----------|----------|



|                   |         |              |   |    |
|-------------------|---------|--------------|---|----|
| CATEGORY          | A       | B            | C | D  |
| LNAV MDA          | 980-1   | 516 (600-1)  |   | NA |
| <b>C</b> CIRCLING | 1300-1¼ | 836 (900-1¼) |   | NA |

MIRL Rwy 8-26 0  
REIL Rwy 8 and 26 0

NE-3, 11 AUG 2022 to 08 SEP 2022

NE-3, 11 AUG 2022 to 08 SEP 2022

|             |          |             |
|-------------|----------|-------------|
| APP CRS     | Rwy Idg  | <b>3200</b> |
| <b>075°</b> | TDZE     | <b>461</b>  |
|             | Apt Elev | <b>464</b>  |

# RNAV (GPS) RWY 8

ORANGE COUNTY (OMH)

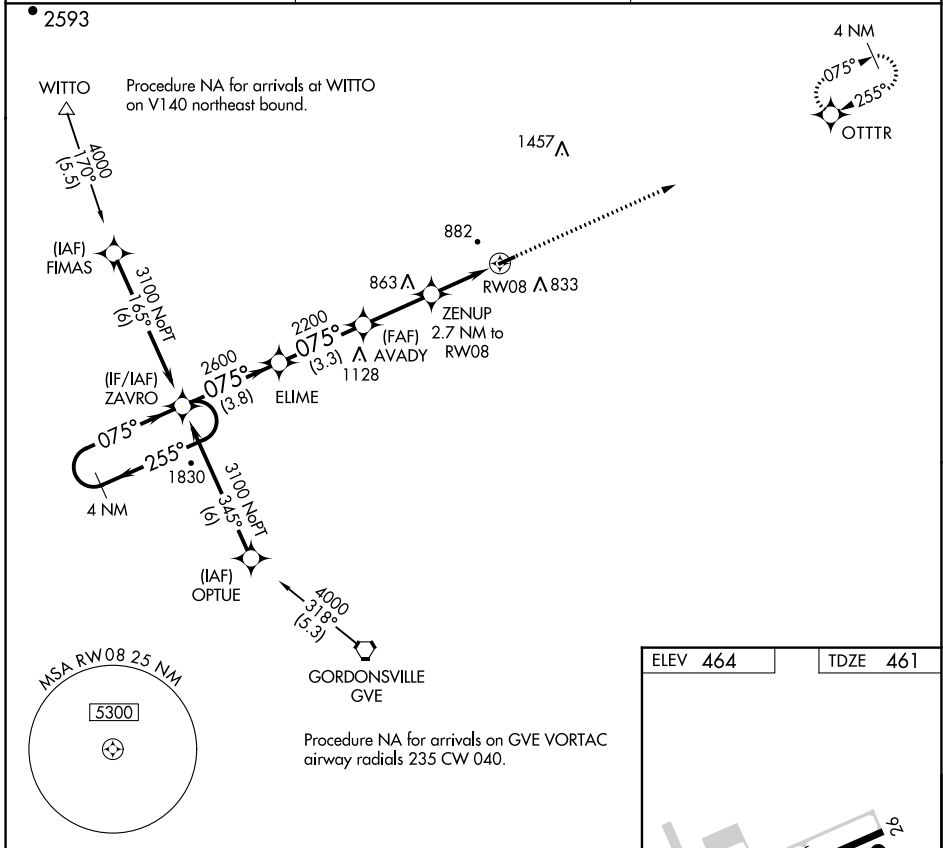
**⚠** Circling Rwy 26 NA at night. DME/DME RNP-0.3 NA. VDP NA with Charlottesville altimeter setting. When local altimeter setting not received, use Charlottesville altimeter setting and increase all MDA 80 feet. Rwy 8 helicopter visibility reduction below 3/4 SM NA. Rwy 26 helicopter visibility reduction below 1 SM NA.

**MISSED APPROACH:**  
Climb to 3000 direct OTTR and hold.

AWOS-3  
**118.075**

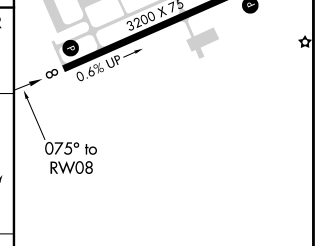
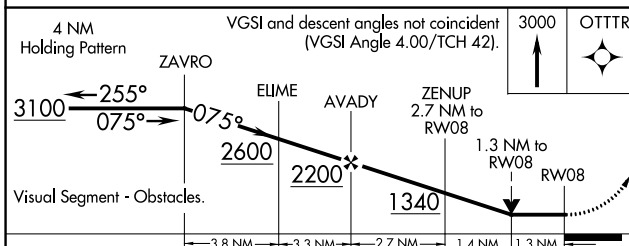
POTOMAC APP CON  
**132.85 323.125**

UNICOM  
**122.8 (CTAF) 0**



NE-3, 11 AUG 2022 to 08 SEP 2022

NE-3, 11 AUG 2022 to 08 SEP 2022



| CATEGORY        | A       | B            | C | D  |
|-----------------|---------|--------------|---|----|
| LNAV MDA        | 1040-1  | 579 (600-1)  |   | NA |
| <b>CIRCLING</b> | 1300-1¼ | 836 (900-1¼) |   | NA |

MRL Rwy 8-26 0  
REIL Rwy 8 and 26 0

|   |                        |                             |  |
|---|------------------------|-----------------------------|--|
| VORTAC GVE<br><b>115.6</b><br>Chan <b>103</b> | APP CRS<br><b>026°</b> | Rwy Idg<br>TDZE<br>Apt Elev | <b>N/A</b><br><b>N/A</b><br><b>464</b> |
|---|------------------------|-----------------------------|--|

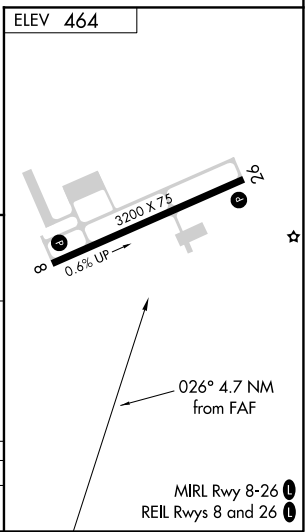
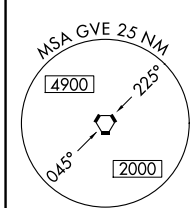
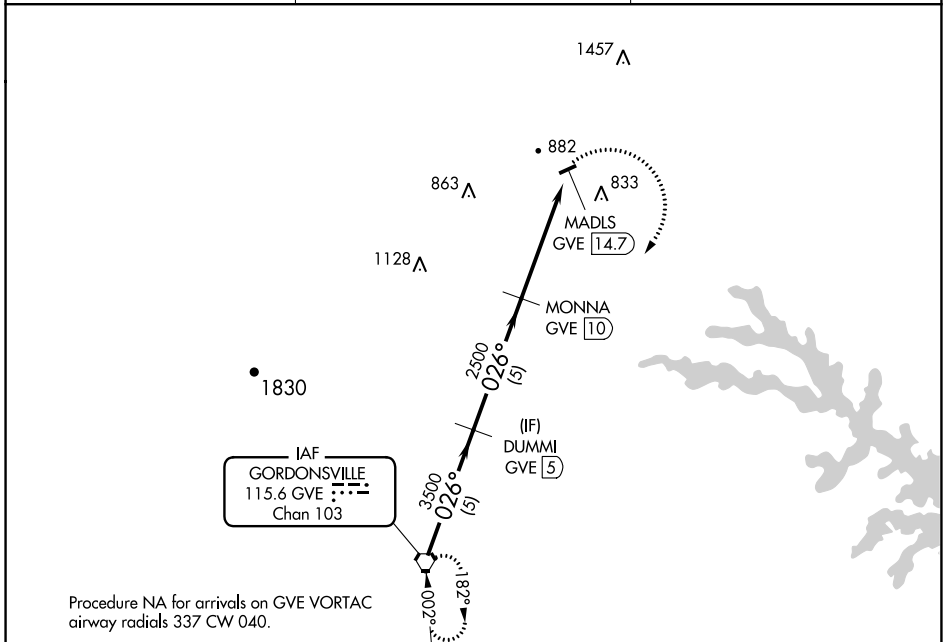
# VOR/DME-A

ORANGE COUNTY (OMH)

**⚠** Circling to Rwy 26 NA at night. When local altimeter setting not received, use Charlottesville altimeter setting and increase all MDA 80 feet.  
**⚠** Helicopter visibility reduction below 1 SM NA.

MISSED APPROACH: Climbing right turn to 3500 direct GVE VORTAC and hold.

|                          |  |  |
|--------------------------|--|--|
| AWOS-3<br><b>118.075</b> | POTOMAC APP CON<br><b>132.85 323.125</b> | UNICOM<br><b>122.8</b> (CTAF) <b>📻</b> |
|--------------------------|--|--|



|                   |                           |                           |              |                |          |
|-------------------|---------------------------|---------------------------|--------------|----------------|----------|
|                   | GVE VORTAC                | DUMMI GVE 5               | MONNA GVE 10 | MADLS GVE 14.7 | 3500 GVE |
|                   | 3500                      | 3500                      | 2500         |                |          |
|                   | 026°                      | 026°                      |              |                |          |
|                   | 5 NM                      | 5 NM                      | 4.7 NM       |                |          |
| CATEGORY          | A                         | B                         | C            | D              |          |
| <b>📻</b> CIRCLING | 2000-1¼<br>1536 (1600-1¼) | 2000-1½<br>1536 (1600-1½) | NA           |                |          |

NE-3, 11 AUG 2022 to 08 SEP 2022

NE-3, 11 AUG 2022 to 08 SEP 2022