

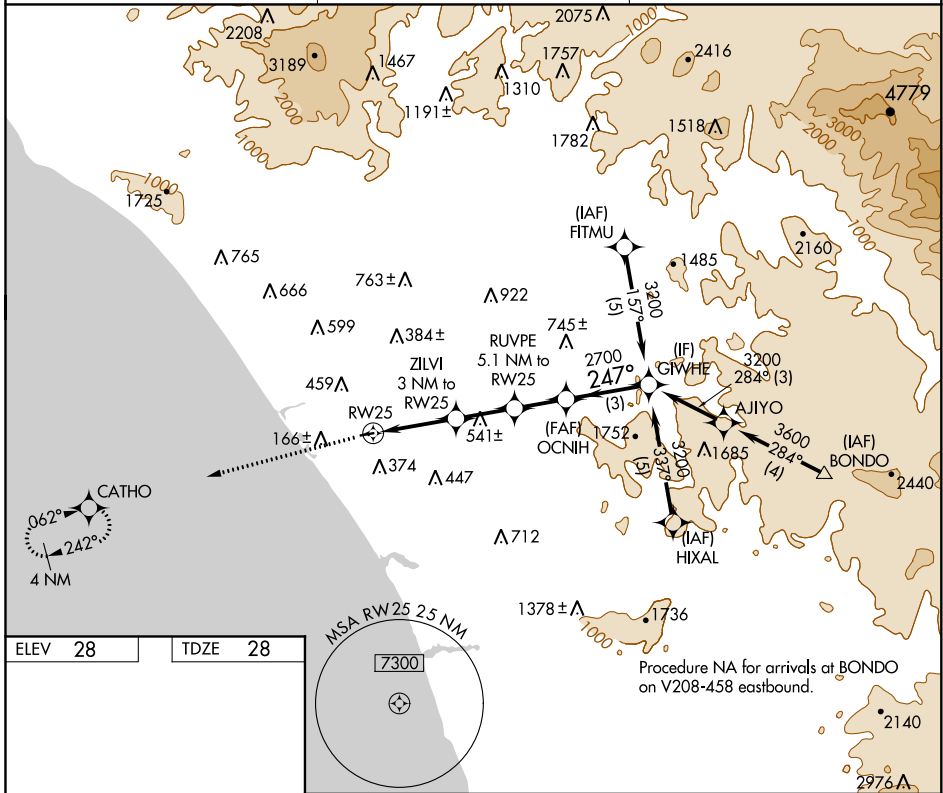
APP CRS 247°	Rwy Idg 2712
	TDZE 28
	Apt Elev 28

RNAV (GPS) RWY 25

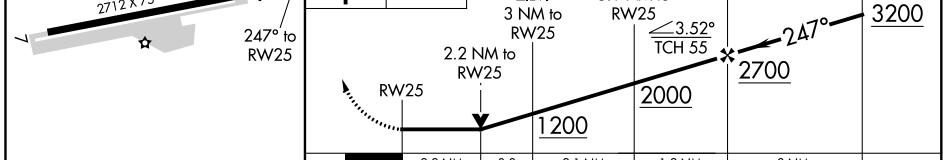
BOB MAXWELL MEML AIRFIELD (OKB)

RNP APCH-GPS.	MISSED APPROACH: Climb to 2000 direct CATHO and hold.
<p>▼ Circling Rwy 7 NA at night.</p> <p>▲ Rwy 25 helicopter visibility reduction below 3/4 SM NA.</p>	

ASOS 127.8	SOCAL APP CON 127.3 323.0	UNICOM 122.725 (CTAF) 0
----------------------	-------------------------------------	-----------------------------------



ELEV 28	TDZE 28
<p>MSA RW25 25 NM</p> <p>7300</p>	
2000	CATHO



	A	B	C	D
CATEGORY	A	B	C	D
LNAV MDA	920-1¼	892 (900-1¼)	NA	
C CIRCLING	920-1¼	892 (900-1¼)	NA	

SW-3, 02 DEC 2021 to 30 DEC 2021

SW-3, 02 DEC 2021 to 30 DEC 2021

MIRL Rwy 7-25
REIL Rwy 25

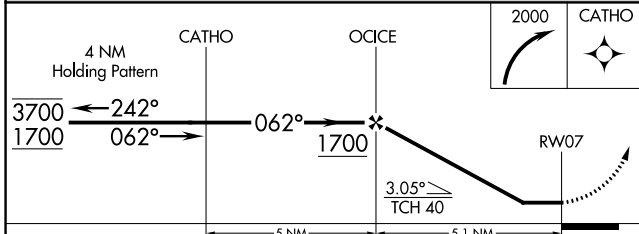
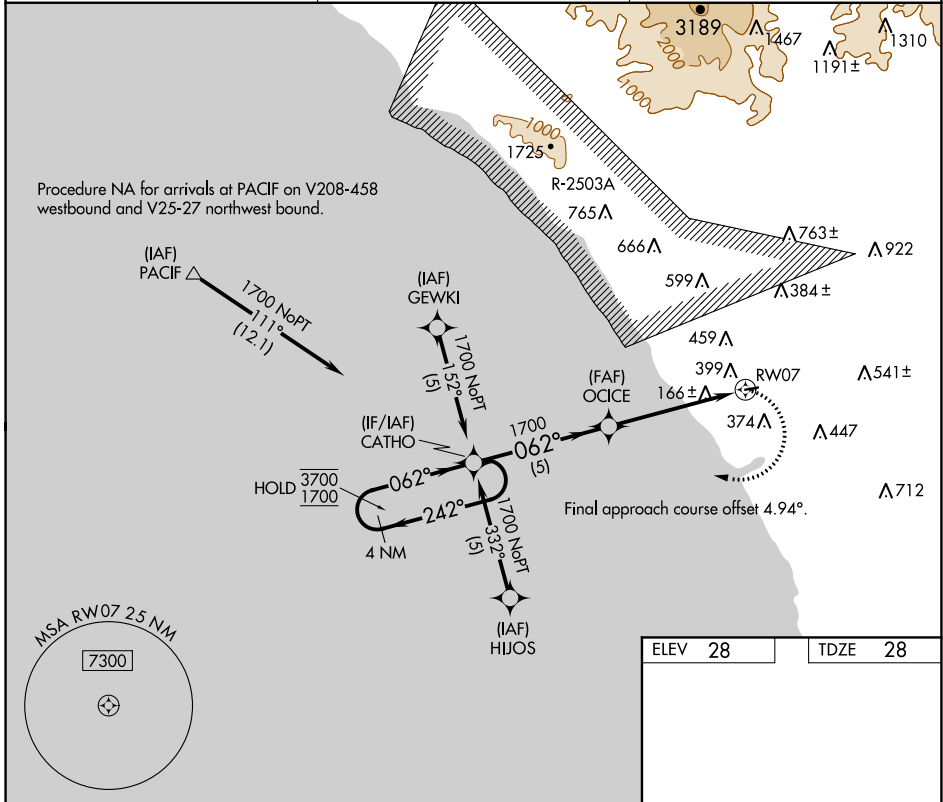
APP CRS	Rwy ldg	2712
062°	TDZE	28
	Apt Elev	28

RNAV (GPS) RWY 7

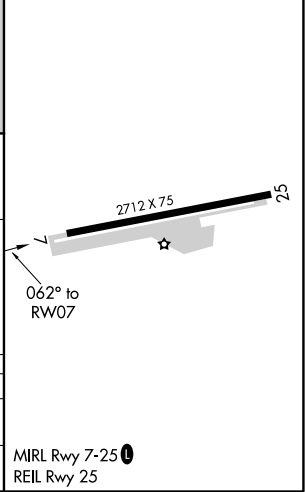
BOB MAXWELL MEML AIRFIELD (OKB)

RNP APCH-GPS.	MISSED APPROACH: Climbing right turn to 2000 direct CATHO and hold.
<p>▼ Rwy 7 helicopter visibility reduction below 1 SM NA.</p> <p>▲ NA Rwy 7 Straight-in and Circling minimums NA at night.</p>	

ASOS 127.8	SOCAL APP CON 127.3 323.0	UNICOM 122.725 (CTAF) 0
----------------------	-------------------------------------	-----------------------------------



ELEV 28	TDZE 28
---------	---------



CATEGORY	A	B	C	D
LNAV MDA	660-1	632 (700-1)	NA	
CIRCLING	720-1 692 (700-1)	840-1¼ 812 (900-1¼)	NA	

SW-3, 02 DEC 2021 to 30 DEC 2021

SW-3, 02 DEC 2021 to 30 DEC 2021

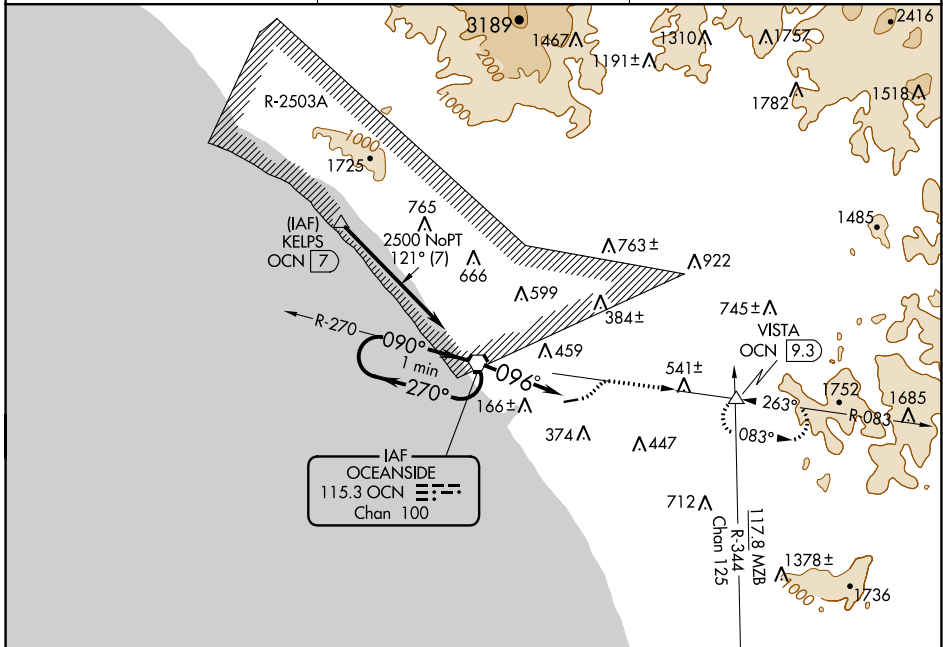
VORTAC OCN 115.3 Chan 100	APP CRS 096°	Rwy Idg TDZE Apt Elev N/A N/A 28
---	------------------------	--

VOR-A

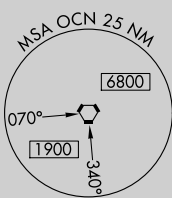
BOB MAXWELL MEML AIRFIELD (OKB)

<p>▼ Helicopter visibility reduction below 1 SM NA. ▲ Night Landing: Rwy 6 NA.</p>	<p>MISSED APPROACH: Climbing left turn to 4000 via heading 030° and OCN R-083 to VISTA INT/OCN 9.3 DME and hold.</p>
--	--

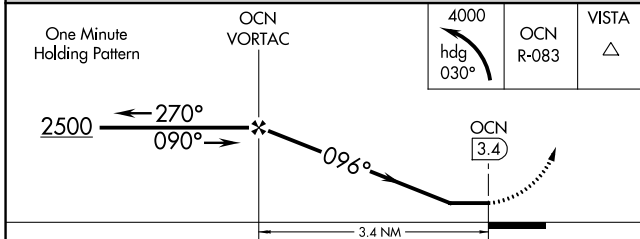
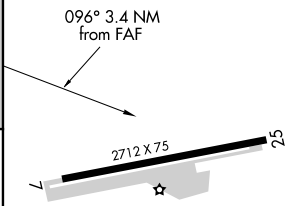
ASOS 127.8	SOCAL APP CON 127.3 323.0	UNICOM 122.725 (CTAF) ①
----------------------	-------------------------------------	--



IAF
OCEANSIDE
115.3 OCN
Chan 100



ELEV **28**



MIRL Rwy 7-25 **①**
REIL Rwy 25

CATEGORY	A	B	C	D	FAF to MAP 3.4 NM					
CIRCLING	1140-1¼	1140-1½	NA		Knots	60	90	120	150	180
	1112 (1200-1¼)	1112 (1200-1½)			Min:Sec	3:24	2:16	1:42	1:21	1:08

VOR-A

SW-3, 02 DEC 2021 to 30 DEC 2021

SW-3, 02 DEC 2021 to 30 DEC 2021