

WAAS CH <b>56536</b> <b>W01A</b>	APP CRS <b>014°</b>	Rwy Idg <b>4119</b> TDZE <b>1023</b> Apt Elev <b>1024</b>
--	------------------------	---

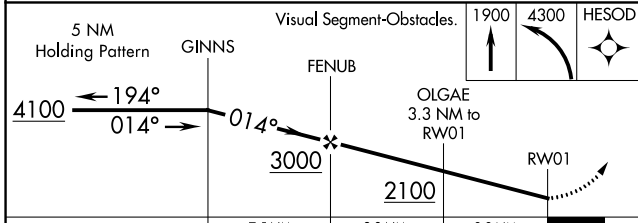
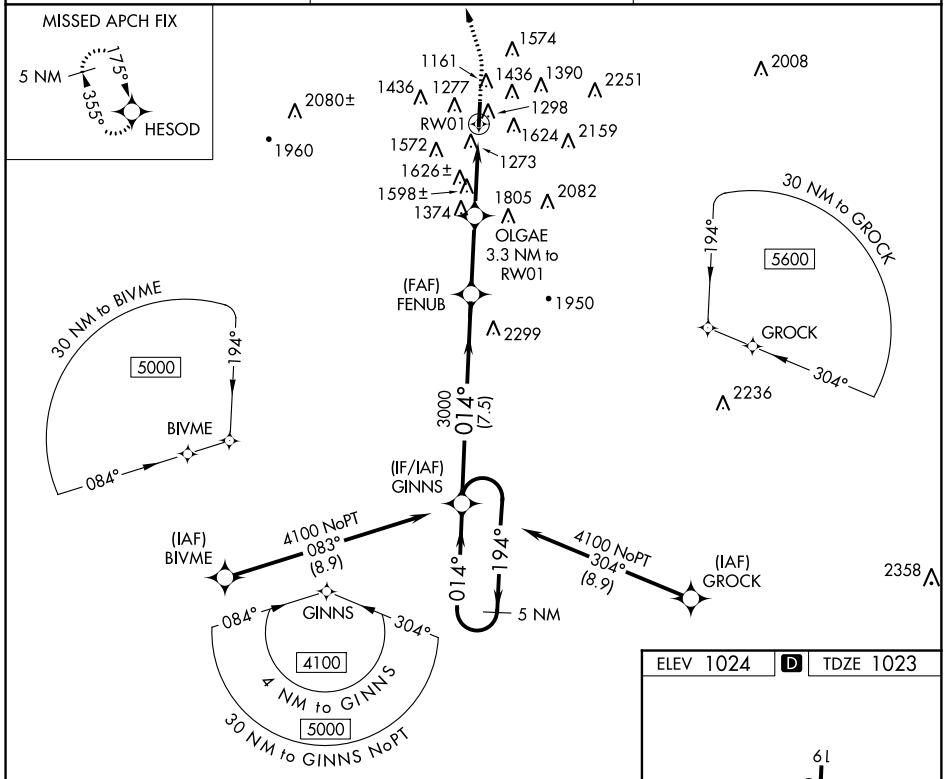
# RNAV (GPS) RWY 1

LT WARREN EATON (OIC)

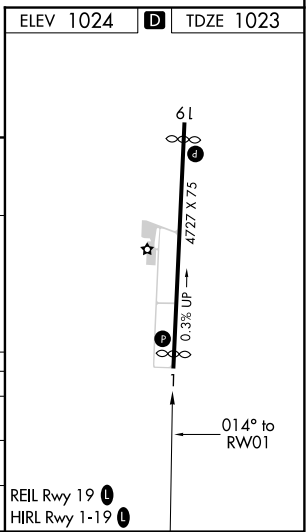
**NA** When local altimeter setting not received, procedure NA.  
DME/DME RNP-0.3 NA. Procedure NA at night.  
Helicopter visibility reduction below 1 SM NA.

MISSED APPROACH: Climb to 1900 then climbing left turn to 4300 direct HESOD and hold.

AWOS-3 <b>119.025</b>	BOSTON CENTER <b>133.25 279.5</b>	UNICOM <b>122.8 (CTAF)</b>
--------------------------	--------------------------------------	-------------------------------



CATEGORY	A	B	C	D
LP MDA	1860-1 837 (900-1)	1860-1¼ 837 (900-1¼)	1860-2½ 837 (900-2½)	837 (900-2½)
LNAV MDA	1880-1 857 (900-1)	1880-1¼ 857 (900-1¼)	1880-2½ 857 (900-2½)	857 (900-2½)
CIRCLING	2060-1¼ 1036 (1100-1¼)	2160-1½ 1136 (1200-1½)	2240-3 1216 (1300-3)	2480-3 1456 (1500-3)



NE-2, 07 DEC 2017 to 04 JAN 2018

NE-2, 07 DEC 2017 to 04 JAN 2018

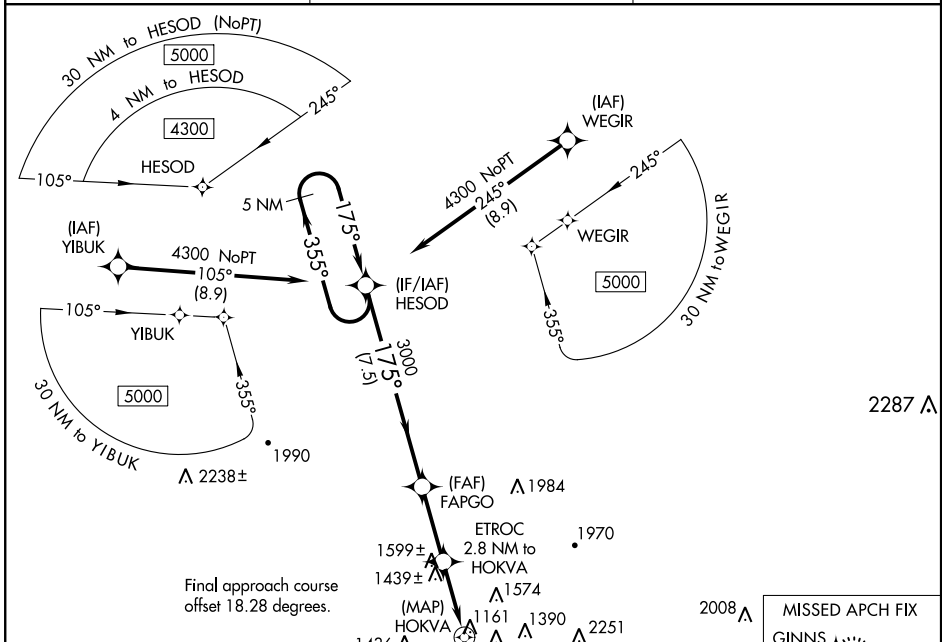
WAAS CH <b>49136</b> <b>W19A</b>	APP CRS <b>175°</b>	Rwy Idg TDZE Apt Elev	<b>4119</b> <b>1024</b> <b>1024</b>
--	------------------------	-----------------------------	---

# RNAV (GPS) RWY 19

LT WARREN EATON (OIC)

<p><b>▽</b> DME/DME RNP-0.3 NA. Procedure NA at night. Helicopter visibility reduction below 1 SM NA. When local altimeter setting not received, procedure NA.</p> <p><b>△</b> NA</p>	<p>MISSED APPROACH: Climb to 2100 then climbing right turn to 4100 direct GINNS and hold.</p>
---	---

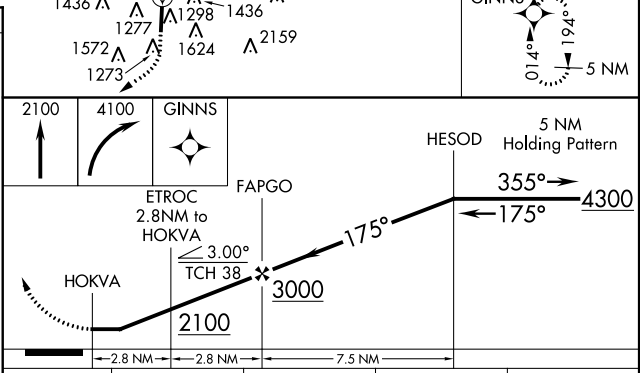
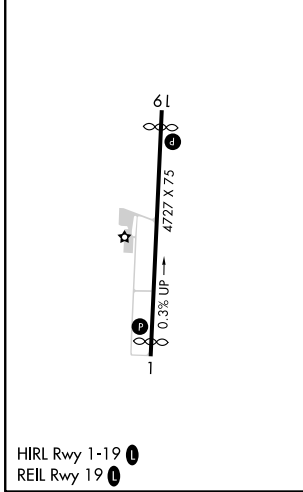
AWOS-3 <b>119.025</b>	BOSTON CENTER <b>133.25 279.5</b>	UNICOM <b>122.8 (CTAF) 0</b>
--------------------------	--------------------------------------	---------------------------------



NE-2: 07 DEC 2017 to 04 JAN 2018

NE-2: 07 DEC 2017 to 04 JAN 2018

ELEV 1024	<b>D</b>	TDZE 1024
-----------	----------	-----------



CATEGORY	A	B	C	D
LP MDA	1700-1	676 (700-1)	1700-1 $\frac{1}{8}$	676 (700-1 $\frac{1}{8}$ )
LNAV MDA	2040-1 $\frac{1}{4}$ 1016 (1100-1 $\frac{1}{4}$ )	2040-1 $\frac{1}{2}$ 1016 (1100-1 $\frac{1}{2}$ )	2040-3	1016 (1100-3)
<b>C</b> CIRCLING	2060-1 $\frac{1}{4}$ 1036 (1100-1 $\frac{1}{4}$ )	2160-1 $\frac{1}{2}$ 1136 (1200-1 $\frac{1}{2}$ )	2240-3 1216 (1300-3)	2480-3 1456 (1500-3)