

LOC/DME I-OGS 110.7 Chan 44	APP CRS 269°	Rwy Idg 6035 TDZE 302 Apt Elev 302
---	------------------------	---

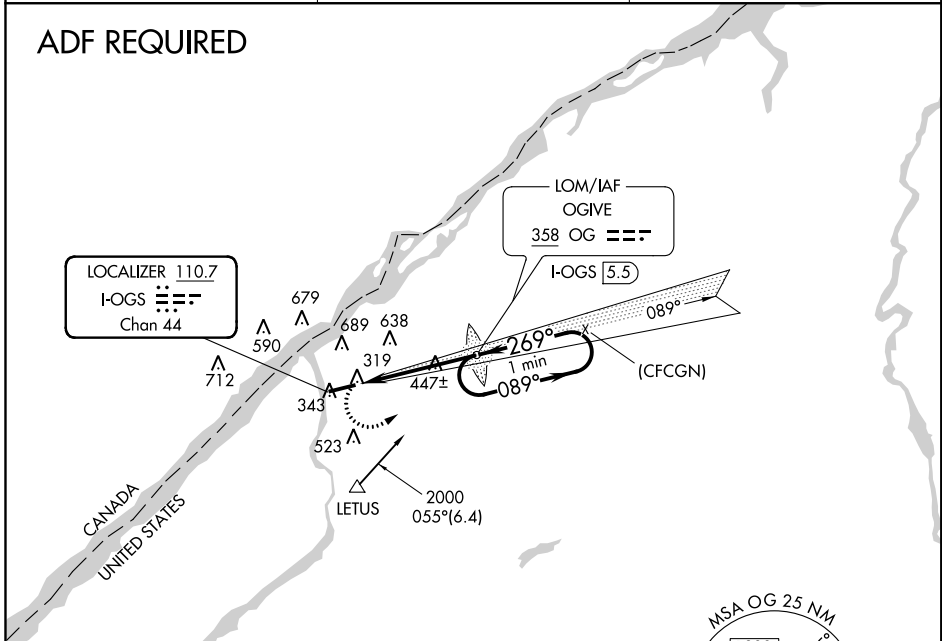
LOC RWY 27
OGDENSBURG INTL (OGS)

NA VDP NA with Massena altimeter setting. When local altimeter setting not received, use Massena altimeter setting and increase all MDA 100 feet and S-LOC 27 and Circling visibility Cat C/D ¼ SM.

MISSED APPROACH: Climbing left turn to 2000 direct OGIVE LOM and hold.

AWOS-3 118.525	BOSTON CENTER 135.25 377.1	UNICOM 122.8 (CTAF)
--------------------------	--------------------------------------	-------------------------------

ADF REQUIRED



NE-2, 16 AUG 2018 to 13 SEP 2018

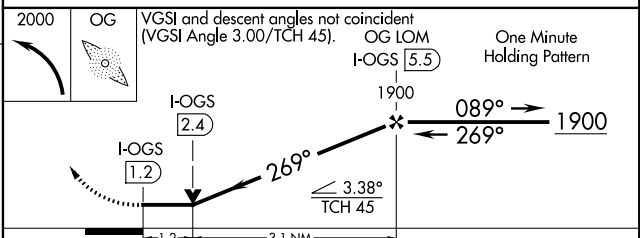
NE-2, 16 AUG 2018 to 13 SEP 2018

ELEV 302	D	TDZE 302
----------	----------	----------

REIL Rwy 27
HIRL Rwy 9-27 **D**

FAF to MAP 4.3 NM

Knots	60	90	120	150	180
Min:Sec	4:18	2:52	2:09	1:43	1:26



CATEGORY	A	B	C	D
S-27	740-1 438 (500-1)		740-1¼ 438 (500-1¼)	
C CIRCLING	740-1 438 (500-1)	1000-1 698 (700-1)	1000-2 698 (700-2)	1000-2¼ 698 (700-2¼)

WAAS CH 40041 W27A	APP CRS 269°	Rwy Idg TDZE Apt Elev	6035 302 302
--	------------------------	-----------------------------	---

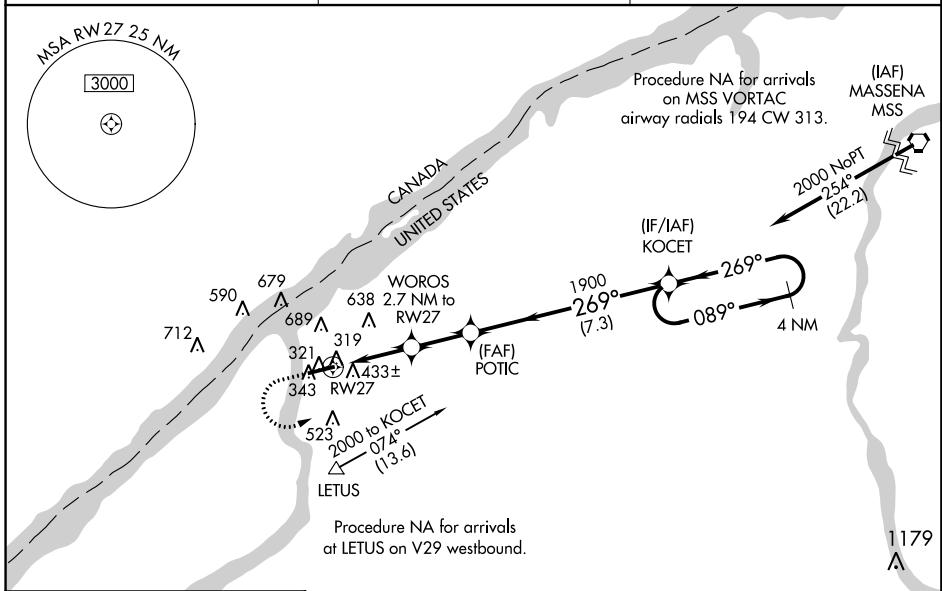
RNAV (GPS) RWY 27

OGDENSBURG INTL (OGS)

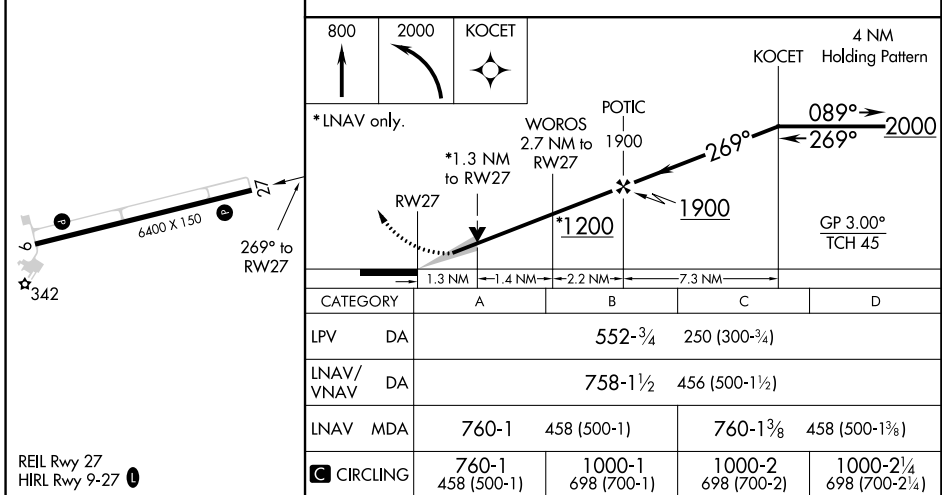
NA Baro-VNAV and VDP NA when using Massena altimeter setting. DME/DME RNP-0.3 NA. When local altimeter setting not received, use Massena altimeter setting and increase LPV DA to 636, LNAV/VNAV DA to 842 and all visibilities $\frac{3}{8}$ SM; increase all MDA 100 feet and LNAV and Circling Cat C and D visibilities $\frac{1}{4}$ SM. For uncompensated Baro-VNAV systems, LNAV/VNAV NA below -15°C (5°F) or above 54°C (130°F).

MISSED APPROACH: Climb to 800 then climbing left turn to 2000 direct KOCET and hold.

AWOS-3 118.525	BOSTON CENTER 135.25 377.1	UNICOM 122.8 (CTAF) ①
--------------------------	--------------------------------------	---------------------------------



ELEV 302	D	TDZE 302
----------	----------	----------



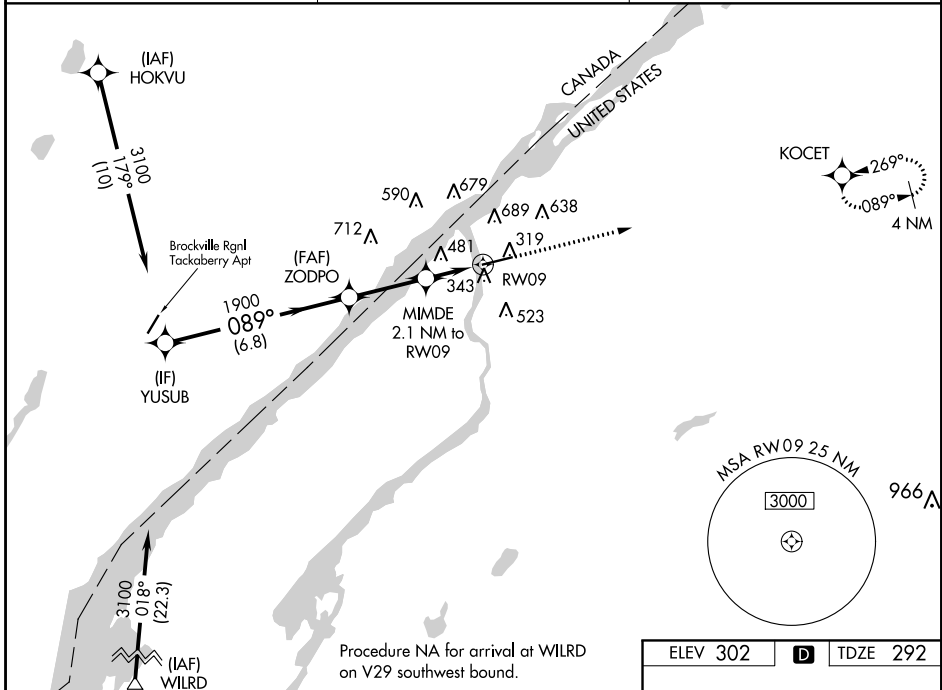
WAAS CH 69528 W09A	APP CRS 089°	Rwy ldg 6006 TDZE 292 Apt Elev 302
--	------------------------	---

RNAV (GPS) RWY 9

OGDENSBURG INTL (OGS)

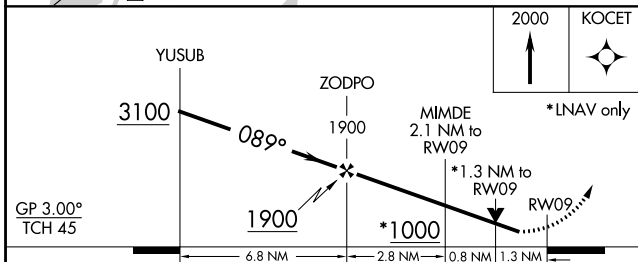
RNP APCH.	MISSED APPROACH: Climb to 2000 direct KOCET and hold.
<p>▼ Rwy 9 helicopter visibility reduction below 3/4 SM NA. For uncompensated Baro-VNAV systems, procedure NA below -15°C or above 54°C.</p>	

AWOS-3 118.525	BOSTON CENTER 135.25 377.1	UNICOM 122.8 (CTAF) 0
--------------------------	--------------------------------------	---------------------------------



NE-2, 16 AUG 2018 to 13 SEP 2018

NE-2, 16 AUG 2018 to 13 SEP 2018



ELEV 302	D	TDZE 292
----------	----------	----------

CATEGORY	A	B	C	D
LPV DA		543-3/4	251 (300-3/4)	
LNAV/VNAV DA		767-13/8	475 (500-13/8)	
LNAV MDA	740-1	448 (500-1)	740-13/8	448 (500-13/8)
C CIRCLING	760-1 458 (500-1)	1000-1 698 (700-1)	1000-2 698 (700-2)	1000-2 1/4 698 (700-2 1/4)

